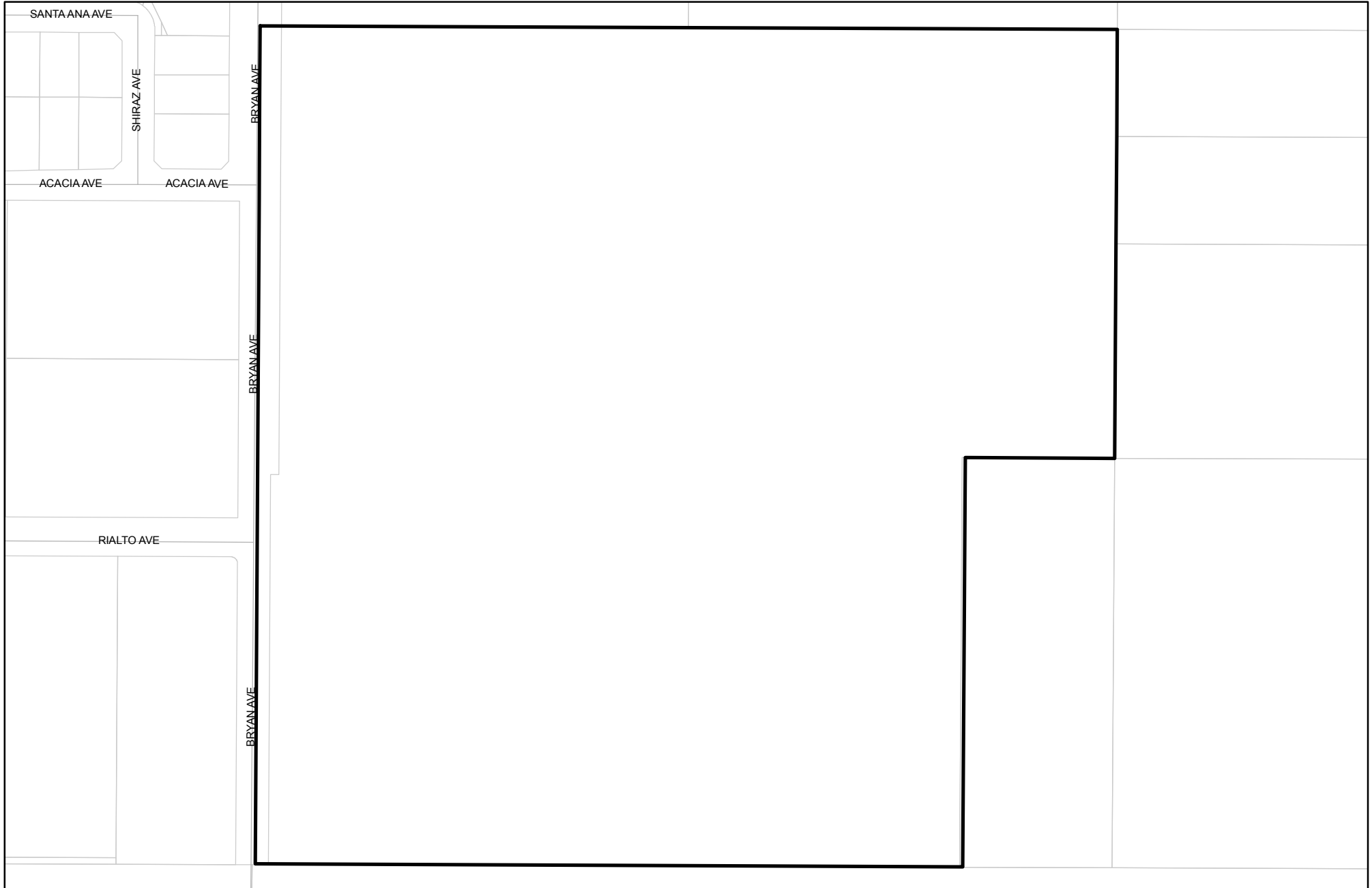
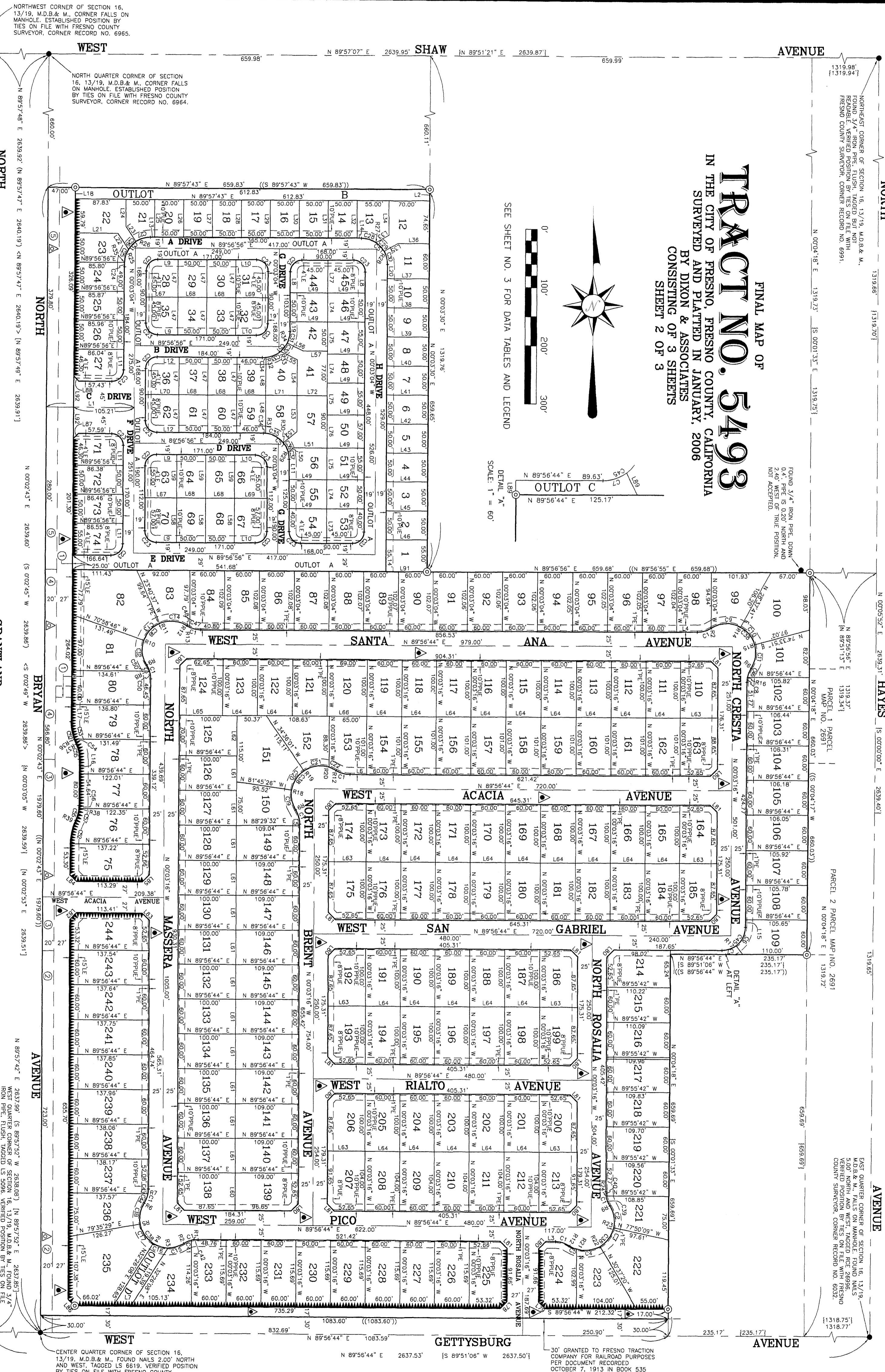




Prepared on Tue Apr 02 13:47:01 2013

# Street Names, Addresses and (Lot Numbers) for T5493





FINAL MAP OF  
**TRACT NO. 5493**  
 IN THE CITY OF FRESNO, FRESNO COUNTY, CALIFORNIA  
 SURVEYED AND PLATTED IN JANUARY, 2006  
 BY DIXON & ASSOCIATES  
 CONSISTING OF 3 SHEETS  
 SHEET 2 OF 3

SEE SHEET NO. 3 FOR DATA TABLES AND LEGEND  
 SCALE: 1" = 60'

NORTHWEST CORNER OF SECTION 16, 13/19, M.D.B. & M., CORNER FALLS ON MANHOLE. ESTABLISHED POSITION BY TIES ON FILE WITH FRESNO COUNTY SURVEYOR, CORNER RECORD NO. 6965.

NORTH QUARTER CORNER OF SECTION 16, 13/19, M.D.B. & M., CORNER FALLS ON MANHOLE. ESTABLISHED POSITION BY TIES ON FILE WITH FRESNO COUNTY SURVEYOR, CORNER RECORD NO. 6964.

NORTHEAST CORNER OF SECTION 16, 13/19, M.D.B. & M., CORNER FALLS ON MANHOLE. ESTABLISHED POSITION BY TIES ON FILE WITH FRESNO COUNTY SURVEYOR, CORNER RECORD NO. 6991.

FOUND 3/4" IRON PIPE DOWN 0.4' FROM IS. 0.20' NORTH AND 2.40' WEST OF TRUE POSITION, NOT ACCEPTED.

PARCEL 1 PARCEL MAP NO. 26931  
 PARCEL 2 PARCEL MAP NO. 2691

EAST QUARTER CORNER OF SECTION 16, 13/19, M.D.B. & M., CORNER FALLS ON MANHOLE. ESTABLISHED POSITION BY TIES ON FILE WITH FRESNO COUNTY SURVEYOR, CORNER RECORD NO. 6032.

CENTER QUARTER CORNER OF SECTION 16, 13/19, M.D.B. & M., FOUND NAILS 2.00' NORTH AND WEST TAGGED L.S. 651' VERIFIED POSITION BY TIES ON FILE WITH FRESNO COUNTY SURVEYOR, CORNER RECORD NO. 6029.

30' GRANTED TO FRESNO TRACTION COMPANY FOR RAILROAD PURPOSES PER DOCUMENT RECORDED OCTOBER 7, 1913 IN BOOK 535 AT PAGE 196 OF DEEDS, OFFICIAL RECORDS OF FRESNO COUNTY.

WEST

NORTH

GRANTLAND

AVENUE

AVENUE

WEST

SHAW

AVENUE

NORTH

HAYES

AVENUE

AVENUE

