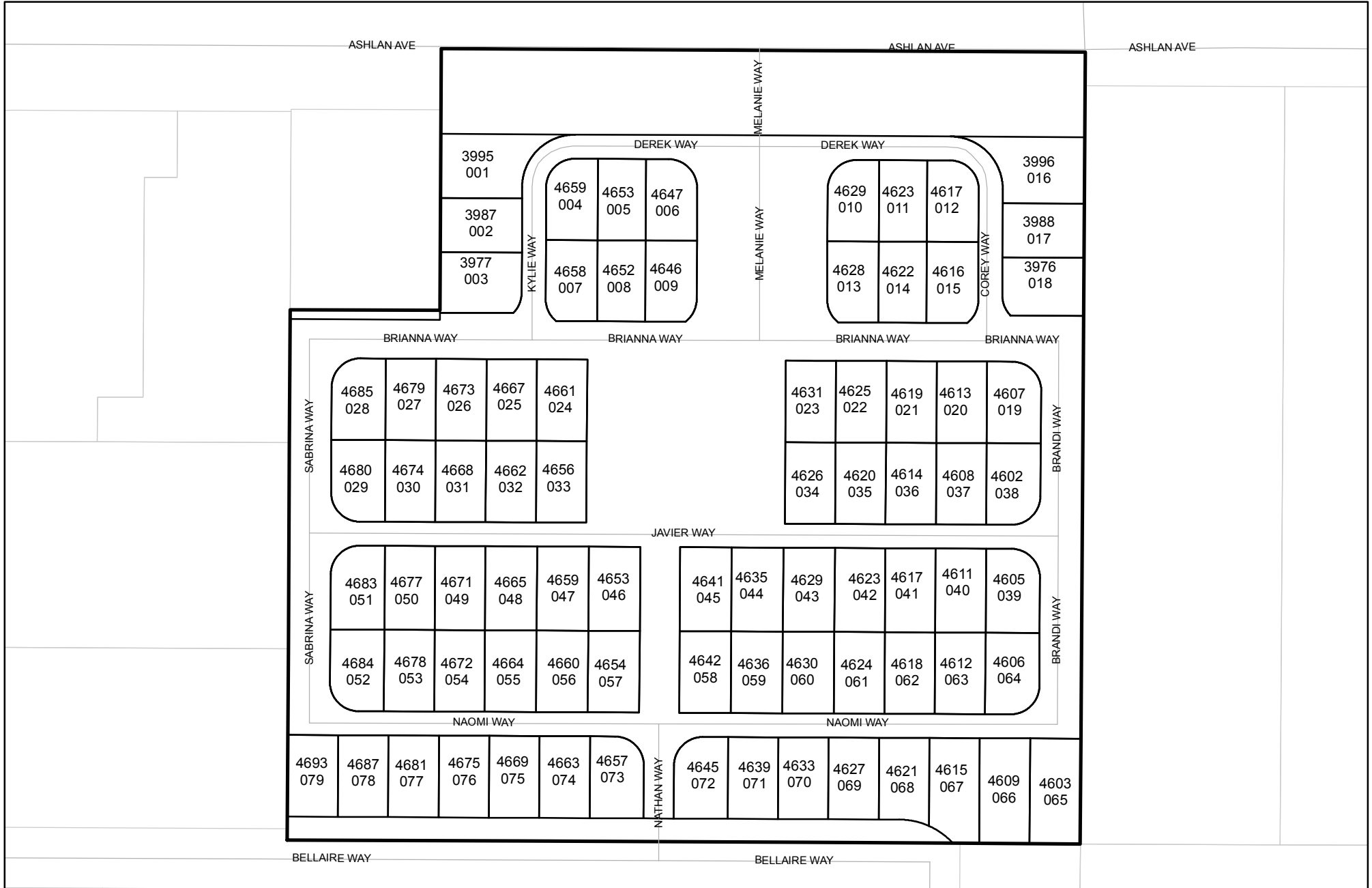




Prepared on Mon Oct 22 14:25:59 2018

Street Names, Addresses and (Lot Numbers) for T5489

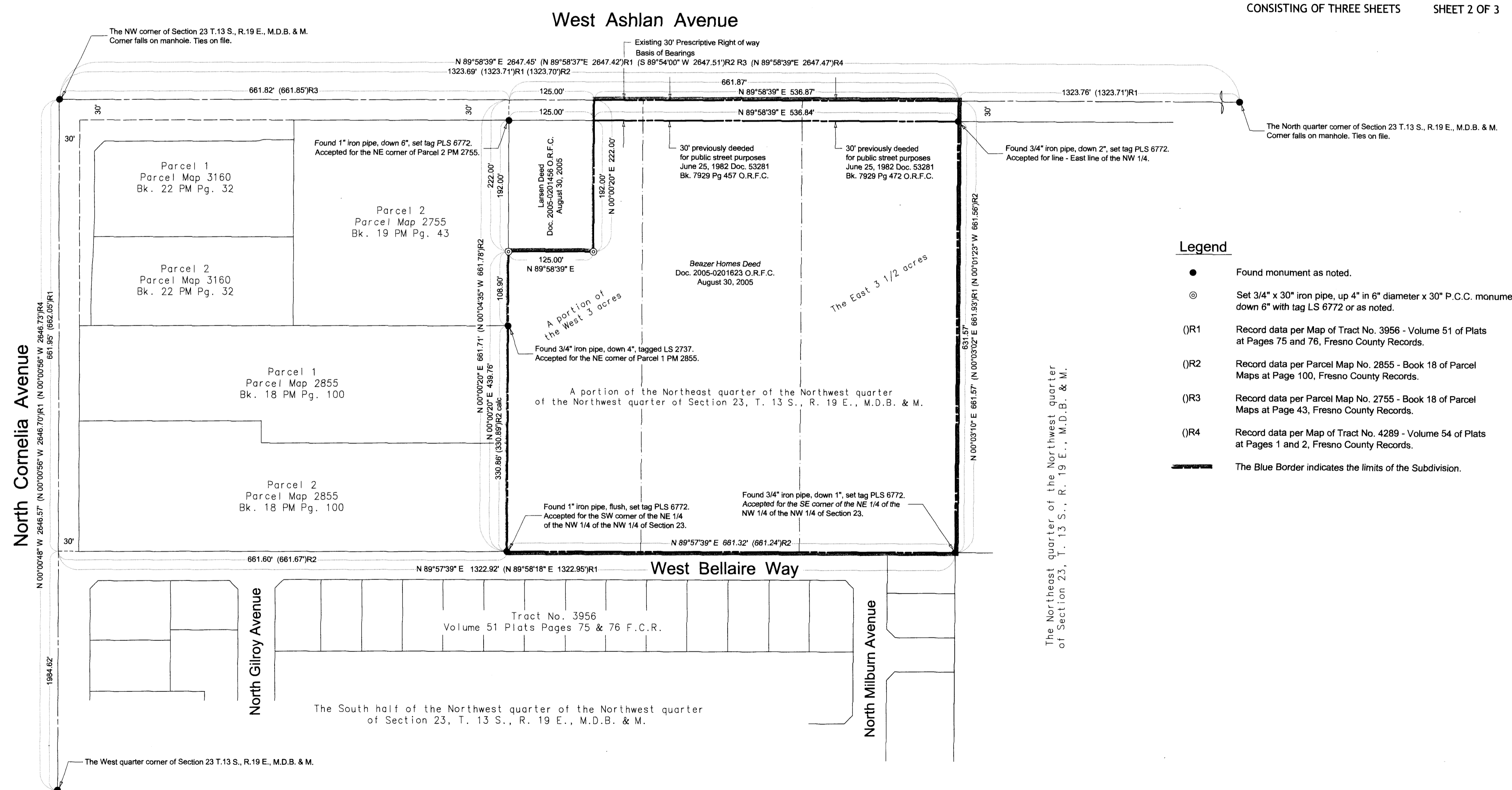
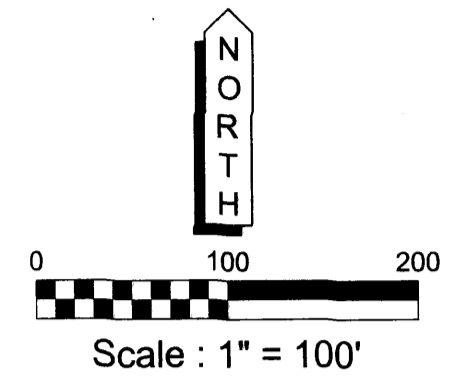


44

FINAL MAP OF
TRACT NO. 5489
ASHLAN VILLAGE
 A PLANNED UNIT DEVELOPMENT
 IN THE CITY OF FRESNO
 COUNTY OF FRESNO - STATE OF CALIFORNIA
 SURVEYED AND PLATTED IN SEPTEMBER 2005
 BY LARS ANDERSEN & ASSOCIATES, INC.
 CONSISTING OF THREE SHEETS SHEET 2 OF 3

Basis of Bearings

The North line of the Northwest quarter of Section 23, Township 13 South, Range 19 East, Mount Diablo Base and Meridian, as shown on the map of Tract No. 4289, recorded in Volume 54 of Plats, at Pages 1 and 2, Fresno County Records and taken to be North 89°58'39" East.



Legend

- Found monument as noted.
- ⊙ Set 3/4" x 30" iron pipe, up 4" in 6" diameter x 30" P.C.C. monument, down 6" with tag LS 6772 or as noted.
- ()R1 Record data per Map of Tract No. 3956 - Volume 51 of Plats at Pages 75 and 76, Fresno County Records.
- ()R2 Record data per Parcel Map No. 2855 - Book 18 of Parcel Maps at Page 100, Fresno County Records.
- ()R3 Record data per Parcel Map No. 2755 - Book 18 of Parcel Maps at Page 43, Fresno County Records.
- ()R4 Record data per Map of Tract No. 4289 - Volume 54 of Plats at Pages 1 and 2, Fresno County Records.
- The Blue Border indicates the limits of the Subdivision.

FINAL MAP OF
TRACT NO. 5489
ASHLAN 79
A PLANNED UNIT DEVELOPMENT
IN THE CITY OF FRESNO
COUNTY OF FRESNO - STATE OF CALIFORNIA
SURVEYED AND PLATTED IN SEPTEMBER 2005
BY LARS ANDERSEN & ASSOCIATES, INC.
CONSISTING OF THREE SHEETS SHEET 3 OF 3

Basis of Bearings

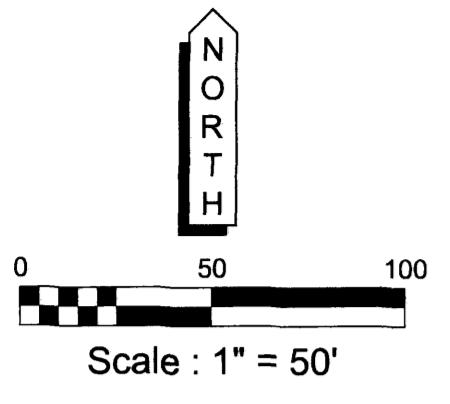
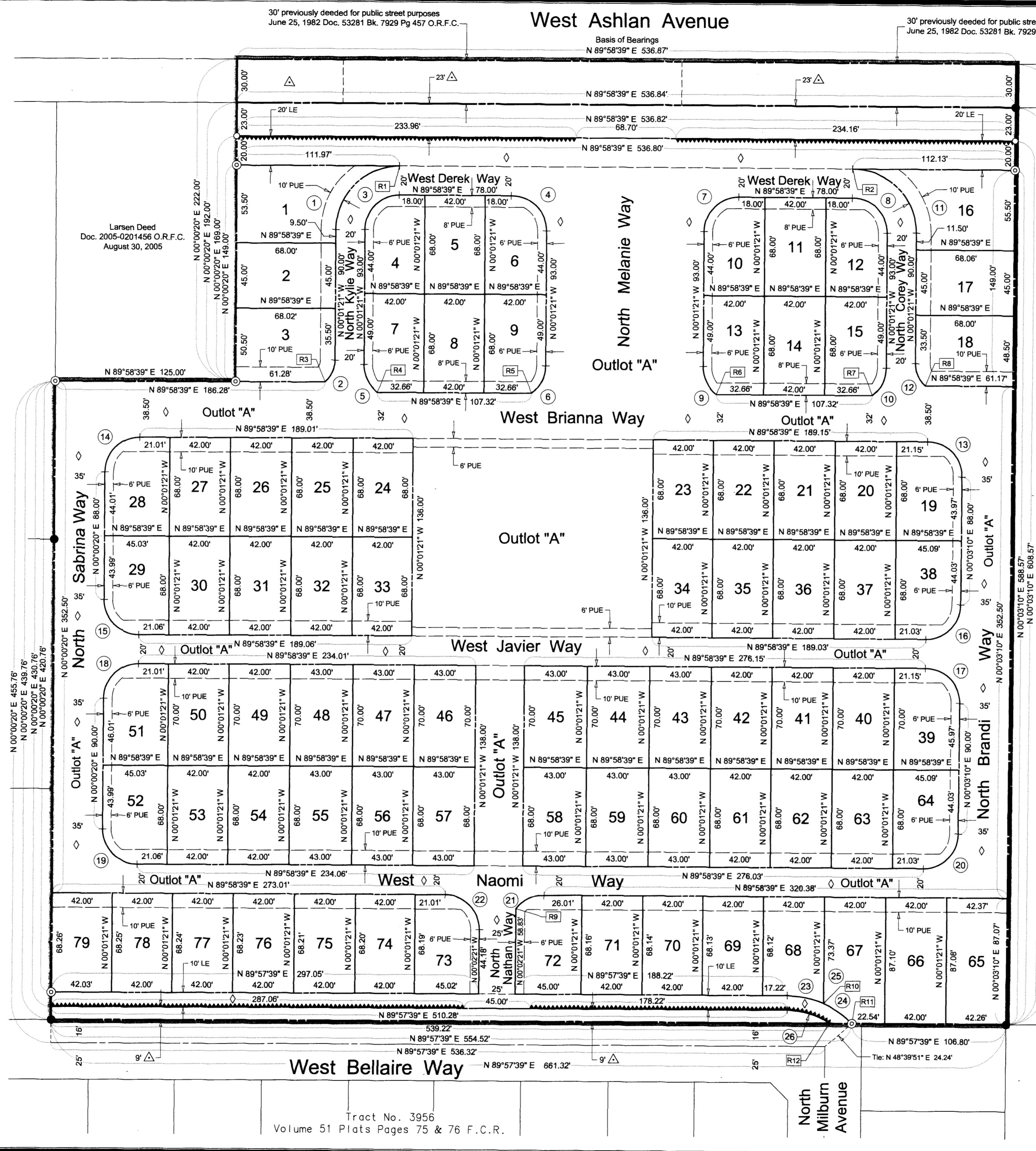
The North line of the Northwest quarter of Section 23, Township 13 South, Range 19 East, Mount Diablo Base and Meridian, as shown on the map of Tract No. 4289, recorded in Volume 54 of Plats, at Pages 1 and 2, Fresno County Records and taken to be North 89°58'39" East.

Legend

- Monument found and accepted as noted on Sheet 2 of 3 Sheets.
- ⊙ Set 3/4" x 30" iron pipe, up 4" in 6" diameter x 30" P.C.C. monument, down 6" with tag LS 6772 or as noted.
- Set 3/4" x 30" iron pipe, down 6" with tag LS 6772 or as noted.
- LE Indicates Landscape Easement now offered for dedication for public use.
- PUE Indicates Public Utility Easement now offered for dedication for public use.
- △ Indicates area now offered for dedication for Public Street purposes.
- ◇ Indicates area now offered for dedication for Public Utility purposes.
- ⊖ Indicates Curve Data reference.
- R1 Indicates Radial Bearing Data reference.
- Indicates Relinquishment of Access Rights.
- The Blue Border indicates the limits of the Subdivision.

Notes

1. All Block Corners, Lot Corners, Angle Points and Curve Points are marked with a 3/4" x 30" Iron Pipe, Set 6" down with Tag LS 6772 unless otherwise noted.
2. Outlot "A" shall be for Access, Community Facilities, Landscaping, Parking and Public Utility Purposes.



Curve Data

No.	Radius	Delta	Length
1	44.00'	90°00'00"	69.12'
2	20.00'	48°35'25"	16.96'
3	24.00'	90°00'00"	37.70'
4	24.00'	90°00'00"	37.70'
5	24.00'	52°20'30"	21.92'
6	24.00'	52°20'30"	21.92'
7	24.00'	90°00'00"	37.70'
8	24.00'	90°00'00"	37.70'
9	24.00'	52°20'30"	21.92'
10	24.00'	52°20'30"	21.92'
11	44.00'	90°00'00"	69.12'
12	20.00'	48°35'25"	16.96'
13	24.00'	90°04'31"	37.73'
14	24.00'	89°58'19"	37.69'
15	24.00'	90°01'41"	37.71'
16	24.00'	89°55'29"	37.67'
17	24.00'	90°04'31"	37.73'
18	24.00'	89°58'19"	37.69'
19	24.00'	90°01'41"	37.71'
20	24.00'	89°55'29"	37.67'
21	24.00'	52°21'29"	21.93'
22	24.00'	89°59'00"	37.69'
23	61.00'	23°58'14"	25.52'
24	61.00'	22°30'58"	23.97'
25	61.00'	46°29'12"	49.49'
26	51.00'	34°33'37"	30.76'

Radial Data

No.	Bearing
R1	N 00°01'21" W
R2	N 00°01'21" W
R3	S 41°25'56" E
R4	S 37°38'09" W
R5	S 37°40'51" E
R6	S 37°38'09" W
R7	S 37°40'51" E
R8	S 41°23'14" W
R9	N 52°22'50" W
R10	N 23°55'53" E
R11	N 46°26'51" E
R12	N 34°31'16" E