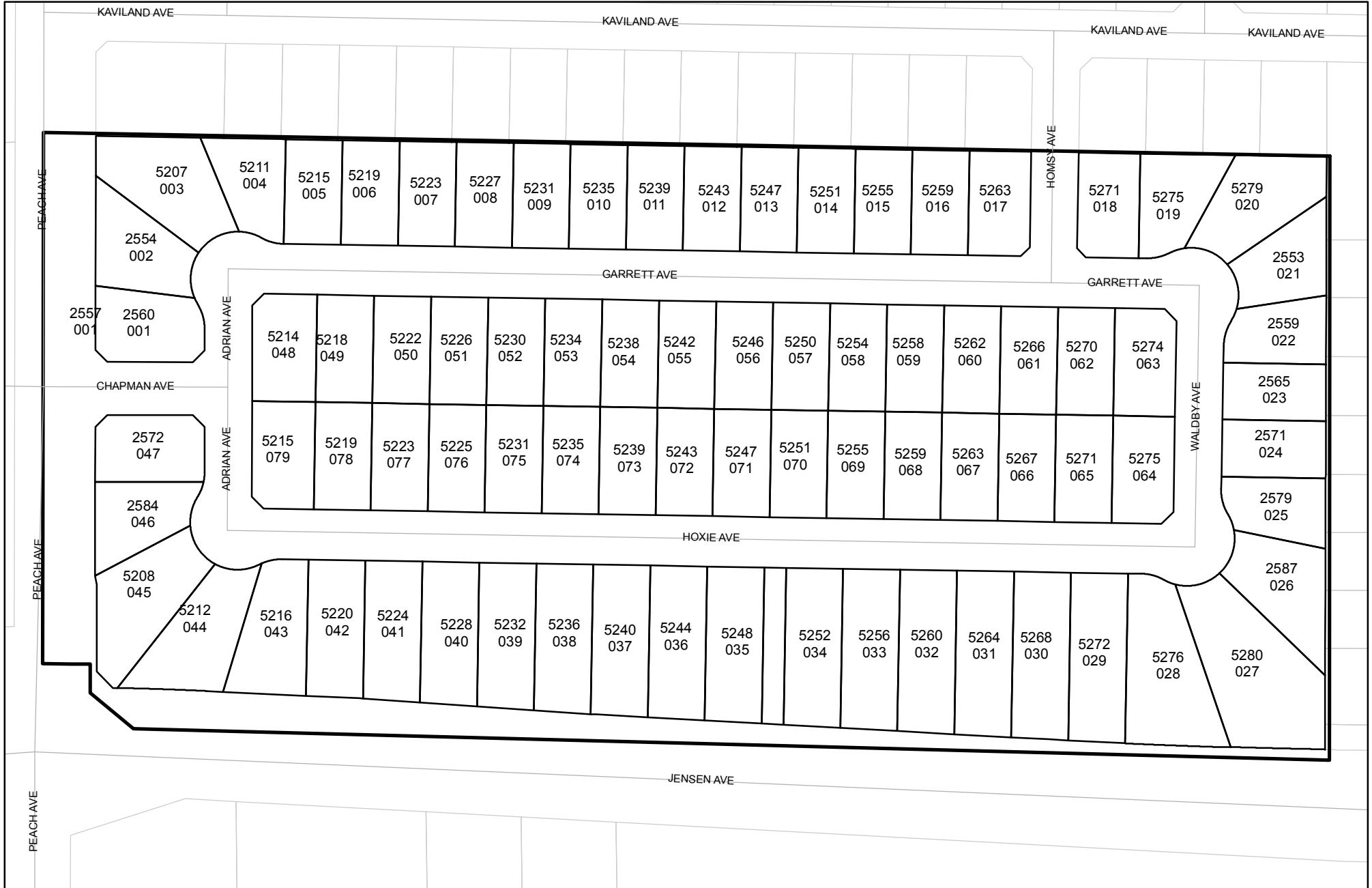




Prepared on Mon Oct 22 14:26:34 2018

# Street Names, Addresses and (Lot Numbers) for T5482



# FINAL MAP OF TRACT NO. 5482

IN THE CITY OF FRESNO,  
FRESNO COUNTY, CALIFORNIA  
SURVEYED AND PLATTED IN MARCH 2006  
BY PRECISION CIVIL ENGINEERING, INC.  
CONSISTING OF THREE SHEETS  
SHEET TWO OF THREE

EAST CHURCH AVENUE  
N89°55'18"W 2679.72' (N89°55'26"W 2679.59') ((S89°55'14"E 2679.78)) (S89°55'14"E 2678.78)

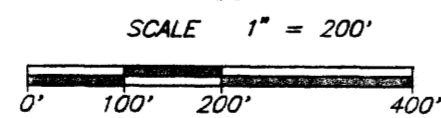
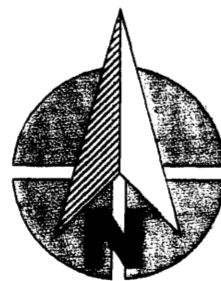
#	LOCATION	TAG	DEPTH
1	W 1/4 COR SEC. 17, T14S, R21E, MDB&M. POSITION FALLS ON MANHOLE. FOUND 3" OFFSET NAILS N & E PER C.R. # 5295	N/A	
2	C 1/4 COR SEC. 17, T14S, R21E, MDB&M. FOUND 3/4" IP, NO TAG, DOWN 8", PER C.R. # 4460	NO TAG	DOWN 8"
3	N 1/4 COR SEC. 20, T14S, R21E, MDB&M. FOUND FRESNO COUNTY BRASS CAP MONUMENT PER C.R. # 4458	N/A	
4	NW COR SEC. 20, T14S, R21E, MDB&M FOUND 3/4" IP, TAGGED LS 5096 FLUSH, PER C.R. # 6253	LS 5096	FLUSH
5	SE CORNER LOT 28, TRACT NO. 4606, VOL. 57 OF PLATS, PAGES 64-66, FRESNO COUNTY RECORDS, FOUND 3/4" IP, TAGGED LS 5227, DOWN 6"	LS 5227	DOWN 6"
6	SE COR. LOT 57 OF TRACT NO. 5374, VOL. 75 OF PLATS, PAGES 21-22, FOR, FD. 3/4" IRON PIPE, TAGGED PLS 6619, IN CONC., DOWN 6"	LS 6619	DOWN 6"
7	SW COR. LOT 22 OF TRACT NO. 5313, VOL. 75 OF PLATS, PAGES 19-20, FOR, FD. 3/4" IRON PIPE, TAGGED PLS 6619, IN CONC., DOWN 6"	LS 6619	DOWN 6"

CURVE TABLE			
CURVE	LENGTH	RADIUS	DELTA
C1	98.84'	3496.00'	1°37'12"
C2	94.09'	3496.00'	1°32'31"
C3	4.75'	3496.00'	0°04'41"
C4	20.44'	7935.00'	0°08'51"
C5	59.90'	7935.00'	0°25'57"
C6	111.13'	7935.00'	0°48'09"
C7	99.21'	7935.00'	0°42'59"
C8	290.68'	7935.00'	2°05'56"
C9	27.28'	50.00'	31°15'21"
C10	134.78'	50.00'	154°26'53"
C11	27.74'	50.00'	31°47'18"
C12	27.74'	50.00'	31°47'18"
C13	134.02'	50.00'	153°34'36"
C14	27.74'	50.00'	31°47'18"
C15	27.74'	50.00'	31°47'18"
C16	134.02'	50.00'	153°34'36"
C17	27.74'	50.00'	31°47'18"
C18	7.28'	50.00'	8°20'29"
C19	31.23'	50.00'	35°47'22"
C20	50.03'	50.00'	57°20'10"
C21	50.19'	50.00'	57°30'53"
C22	19.57'	50.00'	22°25'23"
C23	50.26'	50.00'	57°35'33"
C24	50.10'	50.00'	57°24'36"
C25	14.09'	50.00'	16°09'04"
C26	17.96'	50.00'	20°34'32"
C27	50.08'	50.00'	57°23'08"
C28	50.08'	50.00'	57°23'34"
C29	15.90'	50.00'	18°13'22"
C30	133.26'	50.00'	152°42'19"
C31	50.30'	50.00'	57°38'31"
C32	51.73'	50.00'	59°16'25"
C33	27.74'	50.00'	31°47'18"
C34	10.15'	50.00'	11°37'50"
C35	27.74'	50.00'	31°47'18"
C36	27.74'	50.00'	31°47'18"
C37	4.95'	50.00'	5°40'24"
C38	17.59'	50.00'	20°09'28"
C39	22.79'	50.00'	26°06'54"
C40	91.44'	3496.00'	01°29'55"

LINE TABLE	
LINE	LENGTH
L1	N89°31'56"W 10.00'
L2	N00°22'28"W 51.01'
L3	N63°08'13"W 67.48'
L4	N12°26'41"W 9.56'
L5	N45°22'28"W 17.54'
L6	N44°36'02"E 17.53'
L7	N45°22'28"W 17.54'
L8	N44°37'32"E 17.54'
L9	N45°03'41"E 17.40'
L10	N44°30'11"W 17.54'
L11	N45°29'49"E 17.54'
L12	N44°56'19"W 17.67'
L13	N89°31'56"W 30.00'
L14	N89°30'11"W 22.52'
L15	N89°30'11"W 8.91'
L16	N00°29'49"E 13.07'
L17	N00°29'49"E 17.57'
L18	N44°30'11"W 17.54'
L19	N45°29'49"E 17.54'
L20	N44°48'25"W 24.43'
L21	S89°31'56"E 40.00'
L22	N86°34'38"W 5.93'
L23	N86°34'38"W 4.24'
L24	N00°17'47"W 11.64'
L25	N00°45'20"E 7.13'
L26	N63°08'13"W 20.95'
L27	S89°37'32"W 17.00'
L28	S00°39'05"W 69.05'
L29	S00°28'04"W 69.00'
L30	S02°15'17"W 69.00'

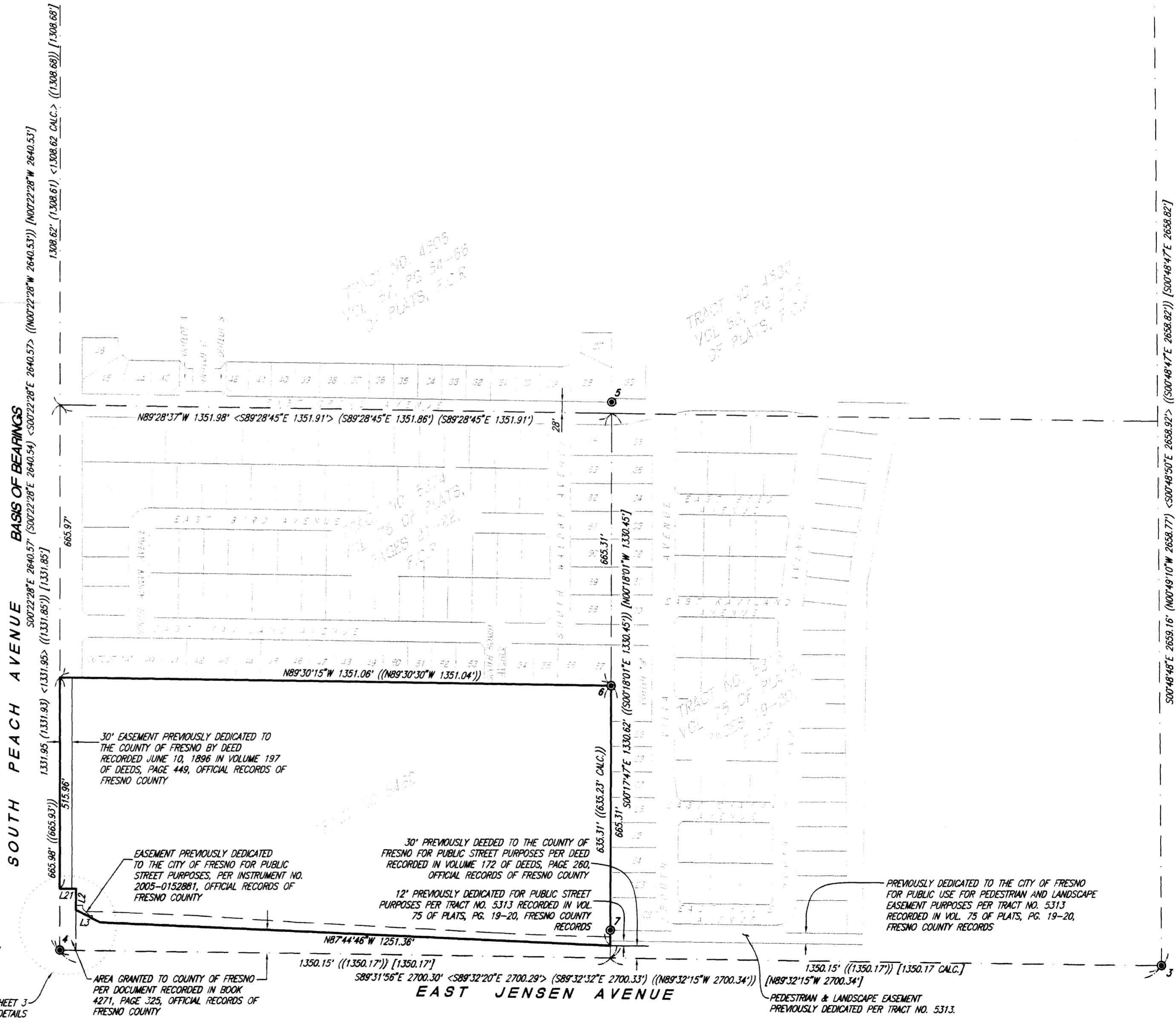
RADIAL TABLE	
RADIAL	BEARING
R1	N78°44'38"W
R2	N85°37'28"E
R3	N27°58'56"E
R4	N14°03'45"E
R5	N43°19'49"W
R6	N79°17'03"E
R7	N73°51'57"W
R8	N48°43'27"E
R9	N08°52'06"W
R10	N06°10'13"E
R11	N01°01'46"E
R12	N56°29'07"W
R13	N66°10'43"E
R14	N00°44'33"E
R15	S31°17'29"E
R16	S02°17'04"W
R17	S00°39'52"W
R18	S00°47'09"W

- LEGEND:**
- ⊙ # INDICATES MONUMENT FOUND AND ACCEPTED AS NOTED IN MONUMENT TABLE.
  - ( ) RECORD DATA PER TRACT NO. 4606, VOL. 57 OF PLATS, PG 64-66, FRESNO COUNTY RECORDS.
  - < > RECORD DATA PER RECORD OF SURVEY, BOOK 36 OF RECORD OF SURVEYS, PAGE 88, FRESNO COUNTY RECORDS.
  - (( )) RECORD DATA PER TRACT NO. 5374 VOL. 75 OF PLATS, PAGES 21-22, FCR.
  - [ ] RECORD DATA PER TRACT NO. 5313 VOL. 75 OF PLATS, PAGES 19-20, FCR.



**BASIS OF BEARINGS:**  
THE WEST LINE OF THE SOUTHWEST QUARTER OF SECTION 17, TOWNSHIP 14 SOUTH, RANGE 21 EAST, MOUNT DIABLO BASE AND MERIDIAN, IS TAKEN TO BE S 00° 22' 28" E AS SHOWN ON RECORD OF SURVEY RECORDED IN BOOK 36 OF RECORD OF SURVEYS AT PAGE 88, FRESNO COUNTY RECORDS.

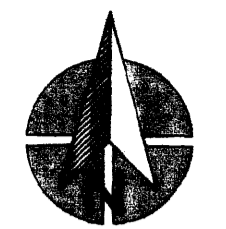
SEE SHEET 3 FOR DETAILS



# FINAL MAP OF TRACT NO. 5482

IN THE CITY OF FRESNO, FRESNO COUNTY, CALIFORNIA  
SURVEYED AND PLATTED IN MARCH 2006 BY PRECISION CIVIL ENGINEERING, INC.  
CONSISTING OF THREE SHEETS

SHEET THREE OF THREE  
N89°30'15"W 1351.08' ((N89°30'30"W 1351.04))  
27 N89°30'15"W 1296.05'

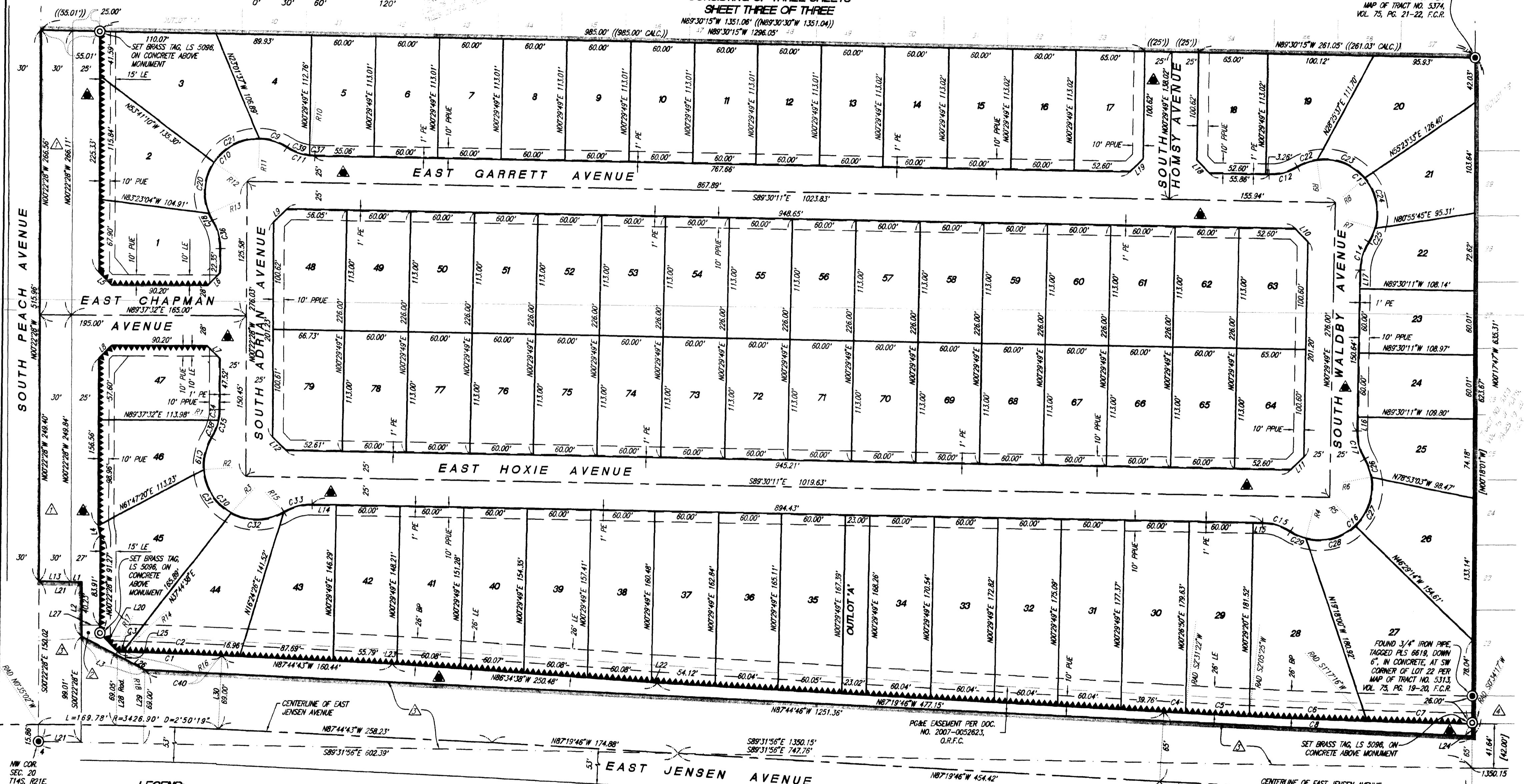


SCALE 1" = 60'



FOUND 3/4" IRON PIPE, TAGGED PLS 6619, DOWN 6", IN CONCRETE, AT SE CORNER OF LOT 57 PER MAP OF TRACT NO. 5374, VOL. 75, PG. 21-22, F.C.R.

FOUND 3/4" IRON PIPE, TAGGED PLS 6619, DOWN 6", IN CONCRETE, AT SW CORNER OF LOT 22 PER MAP OF TRACT NO. 5313, VOL. 75, PG. 19-20, F.C.R.



### LEGEND:

- ⊙ SET DURABLE MONUMENT 3/4" X 30" IP, 4" UP IN 6" DIA. X 30" CONC. MONUMENT, DOWN 6", TAGGED LS 5096.
- ▲ INDICATES RELINQUISHMENT OF DIRECT ACCESS RIGHTS.
- ▲ INDICATES AREA NOW OFFERED FOR DEDICATION FOR PUBLIC STREET AND UTILITY PURPOSES.
- ⊙ INDICATES MONUMENT FOUND AND ACCEPTED AS NOTED
- BLUE BORDER INDICATES LIMITS OF THIS SUBDIVISION
- PUE PUBLIC UTILITY EASEMENT NOW OFFERED FOR DEDICATION FOR PUBLIC USE
- LE LANDSCAPE EASEMENT NOW OFFERED FOR DEDICATION FOR PUBLIC USE
- BP BIKE AND PEDESTRIAN EASEMENT NOW OFFERED FOR DEDICATION FOR PUBLIC USE
- PPUE PLANTING AND PUBLIC UTILITY EASEMENT NOW OFFERED FOR DEDICATION FOR PUBLIC USE
- PE PEDESTRIAN EASEMENT NOW OFFERED FOR DEDICATION FOR PUBLIC USE
- △ INDICATES EASEMENT FOR PUBLIC ROAD PREVIOUSLY DEDICATED TO FRESNO COUNTY PER DOCUMENT RECORDED JUNE 10, 1896 IN BOOK 197, OF DEEDS, PAGE 449, OFFICIAL RECORDS OF FRESNO COUNTY
- △ INDICATES EASEMENT FOR PUBLIC STREET PURPOSES DEDICATED TO CITY OF FRESNO PER DOCUMENT NO. 2005-0152881, OFFICIAL RECORDS OF FRESNO COUNTY
- [ ] INDICATES RECORD DATA PER TRACT NO. 5313 VOL. 75 OF PLATS PAGES 19-20, F.C.R.
- (( )) INDICATES RECORD DATA PER TRACT NO. 5374 VOL. 75 OF PLATS, PAGES 21-22, F.C.R.
- △ INDICATES AREA GRANTED TO THE COUNTY OF FRESNO PER DOCUMENT RECORDED IN BOOK 4271, PAGE 325, OFFICIAL RECORDS OF FRESNO COUNTY
- △ INDICATES AREA PREVIOUSLY DEDICATED TO THE CITY OF FRESNO FOR PUBLIC USE FOR PEDESTRIAN AND LANDSCAPE EASEMENT PURPOSES PER TRACT NO. 5313 RECORDED IN VOL. 75 OF PLATS, PG. 19-20, F.C.R.
- F.C.R. FRESNO COUNTY RECORDS

### NOTES:

SET 3/4" X 30" IRON PIPE, DOWN 6", TAGGED LS 5096 AT ALL LOT CORNERS, ANGLE POINTS, BEGINNING AND ENDING OF CURVES.

OUTLOT "A" IS DEDICATED IN FEE TO THE CITY OF FRESNO FOR PEDESTRIAN AND BICYCLE PURPOSES, SUBJECT TO CITY ACCEPTANCE OF DEVELOPER INSTALLED REQUIRED IMPROVEMENTS.

NW COR. SEC. 20 T14S, R21E, MDB94M

PLAT NO. 5313 VOL. 75 OF PLATS, PG. 19-20, F.C.R.  
PLAT NO. 5374 VOL. 75 OF PLATS, PG. 21-22, F.C.R.