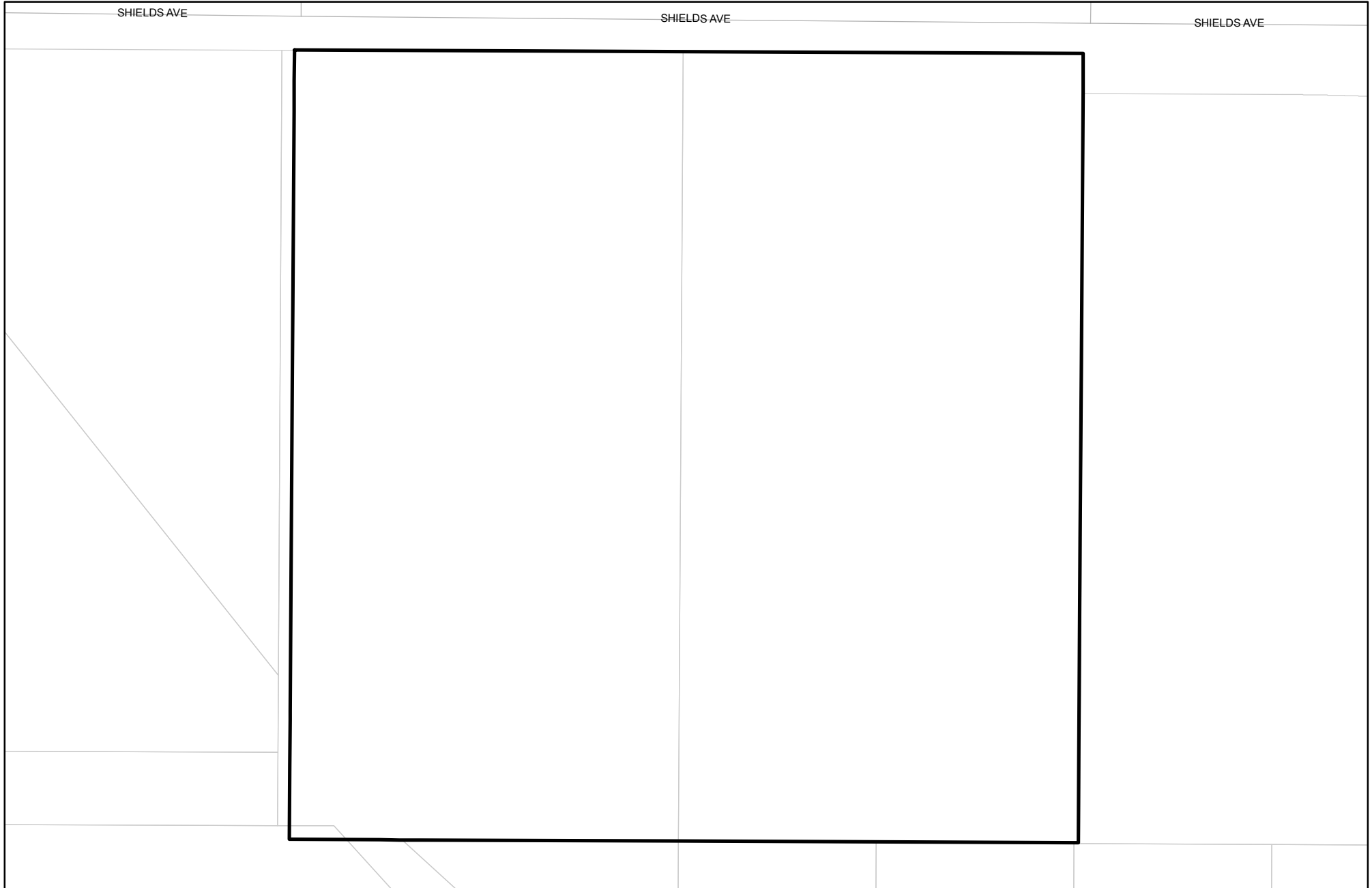




Prepared on Mon Oct 22 14:27:09 2018

Street Names, Addresses and (Lot Numbers) for T5481



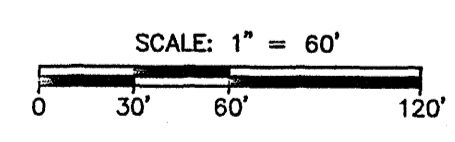
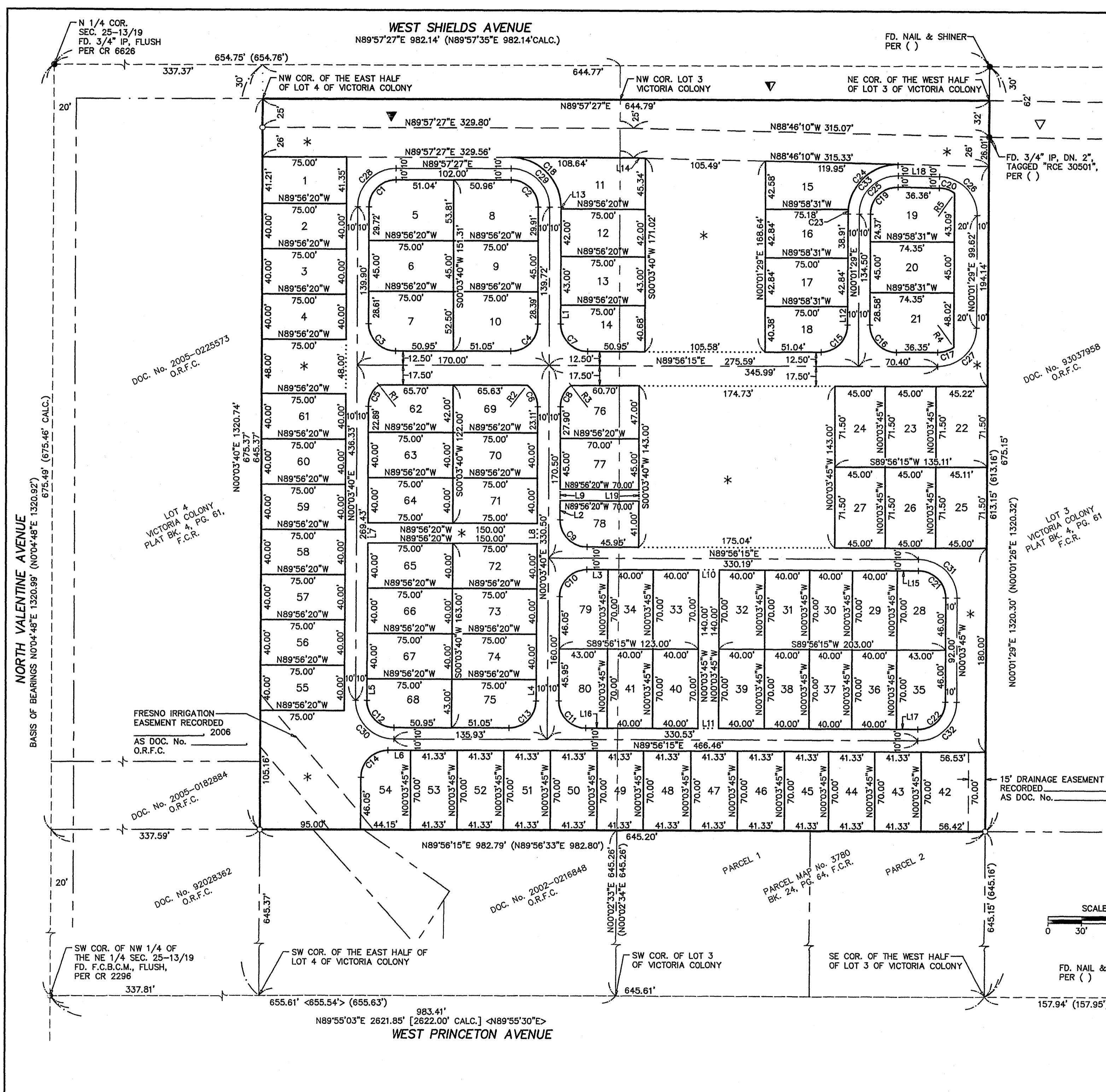
FINAL MAP OF
TRACT NO. 5481
 IN THE CITY OF FRESNO, FRESNO COUNTY, CALIFORNIA
 SURVEYED AND PLATTED IN JANUARY 2006
 BY YAMABE & HORN ENGINEERING, INC.
 CONSISTING OF TWO SHEETS
 SHEET 2 OF 2

- LEGEND**
- MONUMENT FOUND AND ACCEPTED AS NOTED
 - SET 3/4" x 30" IP, DOWN 6", TAGGED "LS 7923", UNLESS OTHERWISE NOTED.
 - () DATA PER RECORD OF SURVEY, RECORDED IN BOOK 39 OF RECORD OF SURVEYS, PAGE 39, F.C.R.
 - [] DATA PER RECORD OF SURVEY, RECORDED IN BOOK 34 OF RECORD OF SURVEYS, PAGE 60, F.C.R.
 - < > DATA PER PARCEL MAP No. 3780, RECORDED IN BOOK 24 OF PARCEL MAPS AT PAGE 64, F.C.R.
 - ▼ NOW OFFERED FOR DEDICATION FOR PUBLIC STREET PURPOSES
 - ▽ PREVIOUSLY GRANTED FOR PUBLIC ROAD PURPOSES PER DOC. No. 92106525, O.R.F.C.
 - ▽ PREVIOUSLY DEDICATED FOR PUBLIC ROAD PURPOSES
 - FD FOUND
 - F.C.R. FRESNO COUNTY RECORDS
 - O.R.F.C. OFFICIAL RECORDS FRESNO COUNTY
 - I.P. IRON PIPE
 - F.C.B.C.M. FRESNO COUNTY BRASS CAP MONUMENT
 - CR CORNER RECORD ON FILE WITH THE FRESNO COUNTY SURVEYOR
 - * OUTLOT A
 - R RADIAL

NOTE:
 ALL LOT CORNERS, ANGLE POINTS & POINTS OF CURVATURE ARE MONUMENTED WITH A 3/4" x 30" IP, DOWN 6", TAGGED "LS 7923".

BASIS OF BEARINGS
 THE WEST LINE OF THE NORTHWEST QUARTER OF THE NORTHEAST QUARTER OF SECTION 25, TOWNSHIP 13 SOUTH, RANGE 19 EAST, MOUNT DIABLO BASE AND MERIDIAN, ACCORDING TO THE MAP THEREOF RECORDED IN BOOK 39 OF RECORD OF SURVEYS AT PAGE 39, FRESNO COUNTY RECORDS, TAKEN TO BE NORTH 0°04'48" EAST

RADIAL TABLE		LINE TABLE		CURVE TABLE				
LINE	BEARING	LINE	BEARING	CURVE	DELTA	RADIUS	LENGTH	
R1	N37°43'15"W	L1	16.79'	S00°03'40"W	C1	89°53'47"	24.00'	37.66'
R2	N37°35'46"E	L2	17.10'	N00°03'40"E	C2	90°06'13"	24.00'	37.74'
R3	N37°43'15"W	L3	18.90'	S89°56'15"W	C3	90°07'25"	24.00'	37.75'
R4	S35°39'38"E	L4	18.89'	S00°03'40"W	C4	89°52'35"	24.00'	37.65'
R5	N35°42'36"E	L5	19.11'	S00°03'40"W	C5	52°13'05"	24.00'	21.87'
		L6	20.05'	N89°56'15"E	C6	52°27'54"	24.00'	21.98'
		L7	18.00'	S00°03'40"W	C7	90°07'25"	24.00'	37.75'
		L8	18.00'	S00°03'40"W	C8	52°13'05"	24.00'	21.87'
		L9	10.00'	S00°03'40"W	C9	90°07'25"	24.00'	37.75'
		L10	18.36'	S89°56'15"W	C10	89°52'35"	24.00'	37.65'
		L11	18.36'	S89°56'15"W	C11	90°07'25"	24.00'	37.75'
		L12	17.20'	N00°01'29"E	C12	90°07'25"	24.00'	37.75'
		L13	1.36'	N00°03'40"E	C13	89°52'35"	24.00'	37.65'
		L14	10.44'	S88°46'10"E	C14	89°52'35"	24.00'	37.65'
		L15	19.00'	N89°56'15"E	C15	89°54'46"	24.00'	37.66'
		L16	19.10'	N89°56'15"E	C16	90°05'14"	24.00'	37.74'
		L17	19.00'	N89°56'15"E	C17	35°35'53"	24.00'	14.91'
		L18	36.36'	N88°46'10"W	C18	90°06'13"	44.00'	69.19'
		L19	10.00'	N00°03'40"E	C19	91°12'21"	24.00'	38.20'
		C20	34°28'46"	24.00'	14.44'			
		C21	90°00'00"	24.00'	37.70'			
		C22	90°00'00"	24.00'	37.70'			
		C23	5°07'45"	44.00'	3.94'			
		C24	86°04'36"	44.00'	66.10'			
		C25	91°12'21"	34.00'	54.12'			
		C26	88°47'39"	34.00'	52.69'			
		C27	89°54'46"	34.00'	53.36'			
		C28	89°53'47"	34.00'	53.35'			
		C29	90°06'13"	34.00'	53.47'			
		C30	90°07'25"	34.00'	53.48'			
		C31	90°00'00"	34.00'	53.41'			
		C32	90°00'00"	34.00'	53.41'			
		C33	91°12'21"	44.00'	70.04'			



PREPARED BY:
YAMABE & HORN ENGINEERING, INC.
 1300 EAST SHAW AVENUE, SUITE 176
 FRESNO, CA 93710
 PH. 559-244-3123 FAX 559-244-3120