



Prepared on Mon Oct 22 14:33:30 2018

Street Names, Addresses and (Lot Numbers) for T5456



MADISON AVE

TRACT MAP NO. 5456

IN THE CITY OF FRESNO, FRESNO COUNTY, CALIFORNIA
 SURVEYED AND PLATTED IN FEBRUARY, 2006
 CONSISTING OF 4 SHEETS
SHEET 3 OF 4
 SEE SHEET 4 FOR DATA TABLES
 AND BOUNDARY DETAIL

LEGEND

- MONUMENT FOUND AND ACCEPTED UNLESS OTHERWISE NOTED
- ⊙ SET 3/4" X 30" IRON PIPE, UP 4" IN 6" X 30" PCC MONUMENT, DOWN 6", TAGGED LS 5277
- () INDICATES RECORD DATA PER TRACT NO. 5206, RUNNING HORSE, RECORDED IN VOLUME 69 OF PLATS AT PAGES 62 THROUGH 65, FRESNO COUNTY RECORDS.
- < > INDICATES RECORD DATA PER RECORD OF SURVEY RECORDED IN BOOK 46 OF RECORD OF SURVEYS AT PAGE 38, FRESNO COUNTY RECORDS.
- { } INDICATES RECORD DATA PER RECORD OF SURVEY RECORDED IN BOOK 47 OF RECORD OF SURVEYS AT PAGE 43, FRESNO COUNTY RECORDS.
- [] INDICATES RECORD DATA PER PARCEL MAP NO 2014 RECORDED IN BOOK 13 OF PARCEL MAPS AT PAGE 12, FRESNO COUNTY RECORDS.
- ▲ INDICATES NOW OFFERED FOR DEDICATED FOR PUBLIC STREET AND UTILITY PURPOSES.
- △ INDICATES PREVIOUSLY DEDICATED FOR PUBLIC STREET AND UTILITY PURPOSES.
- PUE PUBLIC UTILITY EASEMENT NOW OFFERED FOR DEDICATION FOR PUBLIC USE.
- PE PUBLIC PEDESTRIAN EASEMENT NOW OFFERED FOR DEDICATION FOR PUBLIC USE.
- LE PUBLIC LANDSCAPE EASEMENT NOW OFFERED FOR DEDICATION FOR PUBLIC USE.
- INDICATES WAIVER OF DIRECT VEHICULAR ACCESS RIGHTS.
- O.R.F.C. OFFICIAL RECORDS OF FRESNO COUNTY
- THE BLUE BORDER INDICATES THE LIMITS OF THIS SUBDIVISION.

BASIS OF BEARINGS:

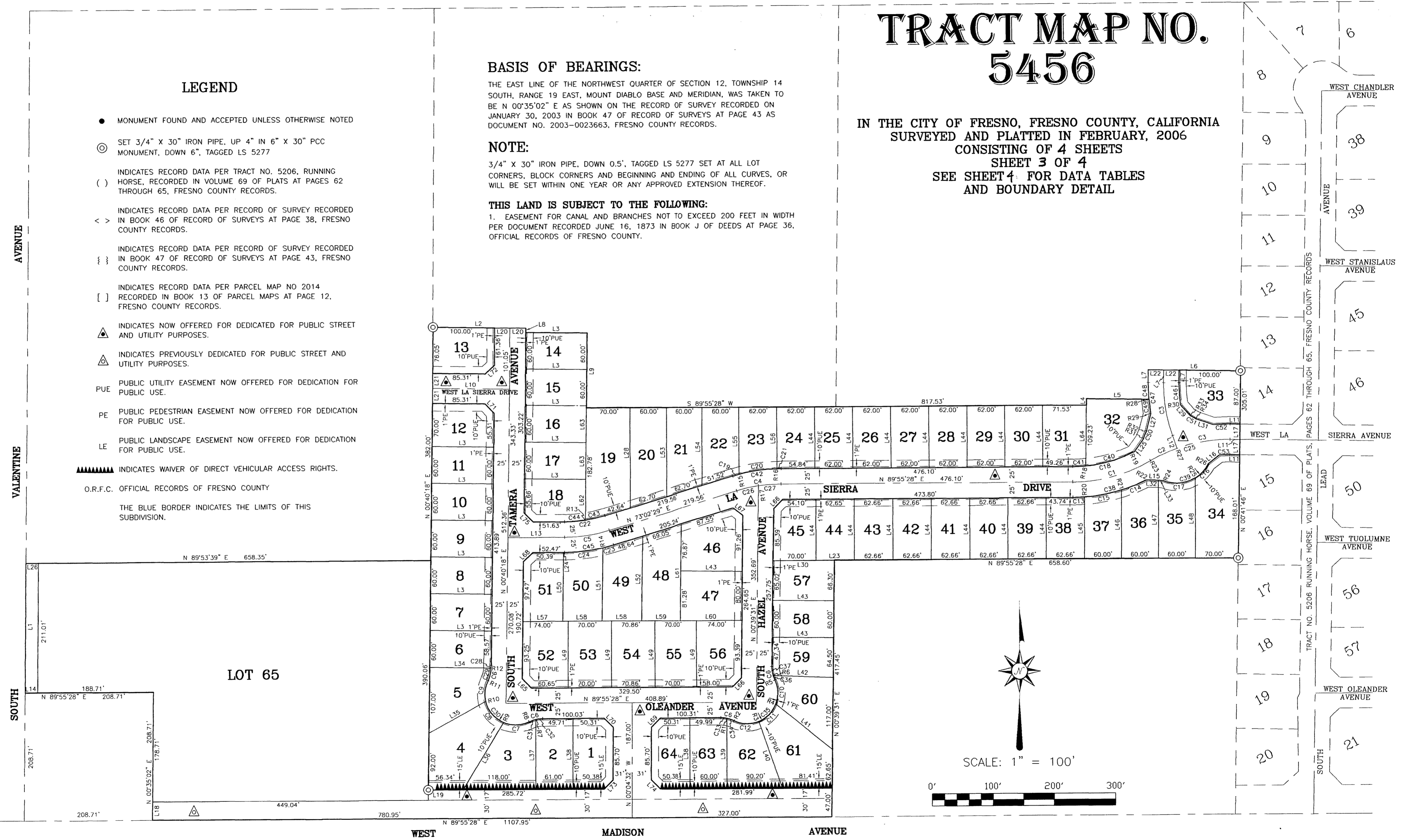
THE EAST LINE OF THE NORTHWEST QUARTER OF SECTION 12, TOWNSHIP 14 SOUTH, RANGE 19 EAST, MOUNT DIABLO BASE AND MERIDIAN, WAS TAKEN TO BE N 00°35'02" E AS SHOWN ON THE RECORD OF SURVEY RECORDED ON JANUARY 30, 2003 IN BOOK 47 OF RECORD OF SURVEYS AT PAGE 43 AS DOCUMENT NO. 2003-0023663, FRESNO COUNTY RECORDS.

NOTE:

3/4" X 30" IRON PIPE, DOWN 0.5', TAGGED LS 5277 SET AT ALL LOT CORNERS, BLOCK CORNERS AND BEGINNING AND ENDING OF ALL CURVES. OR WILL BE SET WITHIN ONE YEAR OR ANY APPROVED EXTENSION THEREOF.

THIS LAND IS SUBJECT TO THE FOLLOWING:

- EASEMENT FOR CANAL AND BRANCHES NOT TO EXCEED 200 FEET IN WIDTH PER DOCUMENT RECORDED JUNE 16, 1873 IN BOOK J OF DEEDS AT PAGE 36, OFFICIAL RECORDS OF FRESNO COUNTY.



VALENTINE AVENUE

SOUTH

WEST MADISON AVENUE

WEST CHANDLER AVENUE
 WEST STANISLAUS AVENUE
 SIERRA AVENUE
 WEST TUOLUMNE AVENUE
 WEST OLEANER AVENUE

TRACT NO. 5206 RUNNING HORSE, VOLUME 69 OF PLATS, PAGES 62 THROUGH 65, FRESNO COUNTY RECORDS

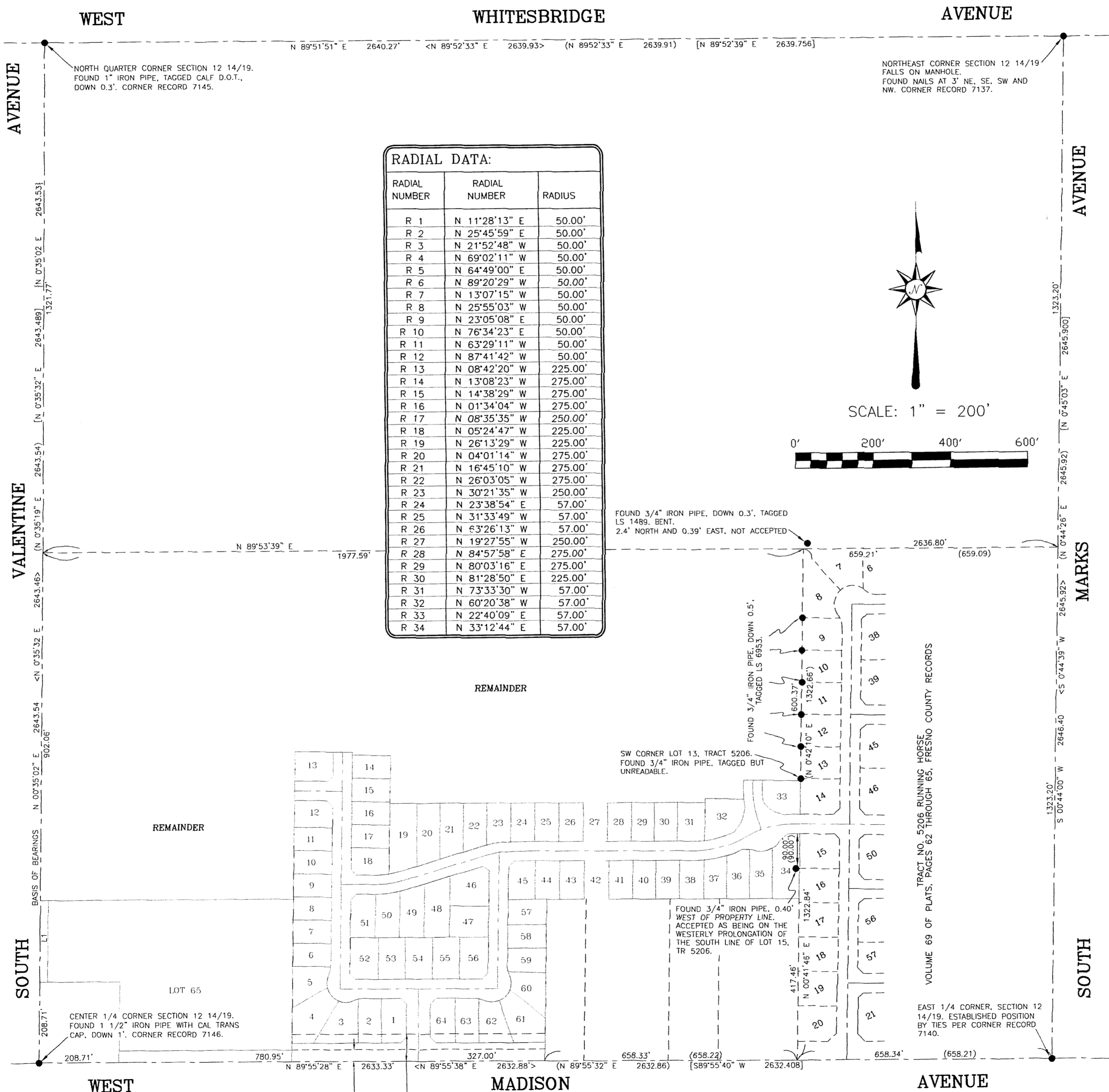
TRACT MAP NO. 5456

IN THE CITY OF FRESNO, FRESNO COUNTY, CALIFORNIA
 SURVEYED AND PLATTED IN FEBRUARY, 2006
 CONSISTING OF 4 SHEETS
 SHEET 4 OF 4

LINE NUMBER	BEARING	DISTANCE
L 1	N 00°35'02" E	211.00'
L 2	N 89°19'42" W	150.00'
L 3	N 89°19'42" W	100.00'
L 4	N 00°41'46" E	10.19'
L 5	N 89°18'14" W	101.37'
L 6	N 89°18'14" W	150.00'
L 7	N 00°41'46" E	20.71'
L 8	N 00°40'18" E	7.56'
L 9	N 00°40'18" E	123.76'
L 10	N 89°19'42" W	125.00'
L 11	N 89°18'14" W	16.01'
L 12	N 19°27'55" W	21.78'
L 13	N 89°53'39" E	91.74'
L 14	N 89°55'28" E	20.00'
L 15	N 88°03'04" W	25.78'
L 16	N 52°49'33" E	23.80'
L 17	N 00°41'46" E	25.00'
L 18	N 00°35'02" E	30.00'
L 19	N 00°40'18" E	17.00'
L 20	N 89°19'42" W	25.00'
L 21	N 00°40'18" E	25.00'
L 22	N 89°18'14" W	25.00'
L 23	N 89°55'28" E	62.65'
L 24	N 89°53'39" E	2.08'
L 25	N 34°31'54" E	27.01'
L 26	N 89°53'39" E	20.00'
L 27	N 14°11'51" E	29.03'
L 28	N 00°04'32" W	163.23'
L 29	N 41°49'42" W	24.04'
L 30	N 89°55'28" E	100.01'
L 31	N 71°21'35" W	29.58'
L 32	N 88°03'04" W	18.48'
L 33	N 88°03'04" W	7.30'
L 34	N 89°19'42" W	99.98'
L 35	N 60°45'13" E	105.58'
L 36	N 31°07'28" E	127.47'
L 37	N 00°04'32" W	113.71'
L 38	N 00°04'32" W	115.00'
L 39	N 00°04'32" W	113.99'
L 40	N 19°23'12" W	115.05'
L 41	N 51°09'38" W	118.45'
L 42	N 87°51'17" W	97.85'
L 43	N 89°20'29" W	100.00'
L 44	N 00°04'32" W	100.00'
L 45	N 00°04'32" W	100.65'
L 46	N 00°04'32" W	111.57'
L 47	N 00°04'32" W	127.13'
L 48	N 00°04'32" W	130.45'
L 49	N 00°04'32" W	108.00'
L 50	N 00°40'18" E	112.11'
L 51	N 00°40'18" E	119.23'
L 52	N 00°40'18" E	138.10'
L 53	N 00°04'32" W	145.02'
L 54	N 00°04'32" W	126.81'
L 55	N 00°04'32" W	108.84'
L 56	N 00°04'32" W	100.09'
L 57	N 89°55'28" E	65.00'
L 58	N 89°55'28" E	64.00'
L 59	N 89°55'28" E	65.85'
L 60	N 89°55'28" E	100.01'
L 61	N 00°39'31" E	158.15'
L 62	N 00°40'18" E	66.54'
L 63	N 00°40'18" E	60.00'
L 64	N 00°41'46" E	99.03'
L 65	N 44°42'07" W	20.74'
L 66	N 45°17'30" E	20.80'
L 67	N 53°09'00" W	20.51'
L 68	N 45°16'59" E	20.80'
L 69	N 44°55'28" E	20.77'
L 70	N 45°04'32" W	20.77'
L 71	N 44°19'42" W	20.77'
L 72	N 45°40'18" E	20.77'
L 73	N 44°55'28" E	20.67'
L 74	N 45°04'32" W	20.67'
L 75	N 44°43'01" W	20.74'

RADIAL NUMBER	RADIAL NUMBER	RADIUS
R 1	N 11°28'13" E	50.00'
R 2	N 25°45'59" E	50.00'
R 3	N 21°52'48" W	50.00'
R 4	N 69°02'11" W	50.00'
R 5	N 64°49'00" E	50.00'
R 6	N 89°20'29" W	50.00'
R 7	N 13°07'15" W	50.00'
R 8	N 25°55'03" W	50.00'
R 9	N 23°05'08" E	50.00'
R 10	N 76°34'23" E	50.00'
R 11	N 63°29'11" W	50.00'
R 12	N 87°41'42" W	50.00'
R 13	N 08°42'20" W	225.00'
R 14	N 13°08'23" W	275.00'
R 15	N 14°38'29" W	275.00'
R 16	N 01°34'04" W	275.00'
R 17	N 08°35'35" W	290.00'
R 18	N 05°24'47" W	225.00'
R 19	N 26°13'29" W	225.00'
R 20	N 04°01'14" W	275.00'
R 21	N 16°45'10" W	275.00'
R 22	N 26°03'05" W	275.00'
R 23	N 30°21'35" W	250.00'
R 24	N 23°38'54" E	57.00'
R 25	N 31°33'49" W	57.00'
R 26	N 53°26'13" W	57.00'
R 27	N 19°27'55" W	250.00'
R 28	N 84°57'58" E	275.00'
R 29	N 80°03'16" E	275.00'
R 30	N 81°28'50" E	225.00'
R 31	N 73°33'30" W	57.00'
R 32	N 60°20'38" W	57.00'
R 33	N 22°40'09" E	57.00'
R 34	N 33°12'44" E	57.00'

CURVE NUMBER	DELTA	RADIUS	ARC LENGTH	CHORD LENGTH
C 1	30°17'03"	250.00'	132.14'	130.61'
C 2	10°53'40"	250.00'	47.54'	47.46'
C 3	20°09'41"	250.00'	87.97'	87.52'
C 4	16°52'59"	250.00'	73.67'	73.40'
C 5	16°51'10"	250.00'	73.53'	73.27'
C 6	25°50'31"	50.00'	22.55'	22.36'
C 7	49°00'11"	50.00'	42.76'	41.47'
C 8	53°29'15"	50.00'	46.68'	45.00'
C 9	39°56'26"	50.00'	34.85'	34.15'
C 10	46°08'49"	50.00'	40.27'	39.19'
C 11	47°09'23"	50.00'	41.15'	40.00'
C 12	47°38'47"	50.00'	41.58'	40.39'
C 13	3°56'42"	275.00'	18.93'	18.93'
C 14	9°17'55"	275.00'	44.63'	44.58'
C 15	12°43'56"	275.00'	61.11'	60.98'
C 16	31°52'24"	57.00'	31.71'	31.30'
C 17	55°12'43"	57.00'	54.93'	52.83'
C 18	26°08'57"	225.00'	102.69'	101.80'
C 19	2°19'02"	275.00'	11.12'	11.12'
C 20	13°04'25"	275.00'	62.75'	62.61'
C 21	1°29'32"	275.00'	7.16'	7.16'
C 22	16°51'10"	225.00'	66.18'	65.94'
C 23	3°49'08"	275.00'	18.33'	18.33'
C 24	13°02'02"	275.00'	62.56'	62.42'
C 25	31°03'21"	250.00'	135.51'	133.85'
C 26	8°21'56"	250.00'	36.50'	36.47'
C 27	8°31'03"	250.00'	37.16'	37.13'
C 28	1°38'00"	50.00'	1.43'	1.43'
C 29	24°12'31"	50.00'	21.13'	20.97'
C 30	142°25'52"	50.00'	124.29'	94.67'
C 31	12°47'48"	50.00'	11.17'	11.14'
C 32	13°02'43"	50.00'	11.38'	11.36'
C 33	11°32'45"	50.00'	10.08'	10.06'
C 34	14°17'46"	50.00'	12.48'	12.44'
C 35	140°56'59"	50.00'	123.00'	94.25'
C 36	8°50'32"	50.00'	7.72'	7.71'
C 37	16°59'59"	50.00'	14.84'	14.78'
C 38	25°58'33"	275.00'	124.68'	123.61'
C 39	87°05'07"	57.00'	86.64'	78.53'
C 40	20°48'42"	225.00'	81.73'	81.28'
C 41	5°20'15"	225.00'	20.96'	20.95'
C 42	16°52'59"	275.00'	81.03'	80.74'
C 43	8°15'11"	225.00'	32.41'	32.38'
C 44	8°35'59"	225.00'	33.77'	33.74'
C 45	16°51'10"	275.00'	80.89'	80.60'
C 46	9°12'56"	225.00'	36.19'	36.15'
C 47	10°38'30"	275.00'	51.08'	51.00'
C 48	5°43'48"	275.00'	27.50'	27.49'
C 49	4°54'42"	275.00'	23.57'	23.57'
C 50	13°12'53"	57.00'	13.15'	13.12'
C 51	10°32'35"	57.00'	10.49'	10.47'
C 52	5°42'56"	275.00'	27.43'	27.42'
C 53	4°06'02"	225.00'	16.10'	16.10'



30' RESERVED FOR ROAD AND CANAL PURPOSES PER DOCUMENT RECORDED APRIL 18, 1887 IN BOOK 59 OF DEEDS AT PAGE 46, OFFICIAL RECORDS OF FRESNO COUNTY.

70' RIGHT-OF-WAY FOR PUBLIC ROAD GRANTED TO THE COUNTY OF FRESNO PER DOCUMENT RECORDED MARCH 29, 1887 IN BOOK 58 OF DEEDS AT PAGE 46, OFFICIAL RECORDS OF FRESNO COUNTY.