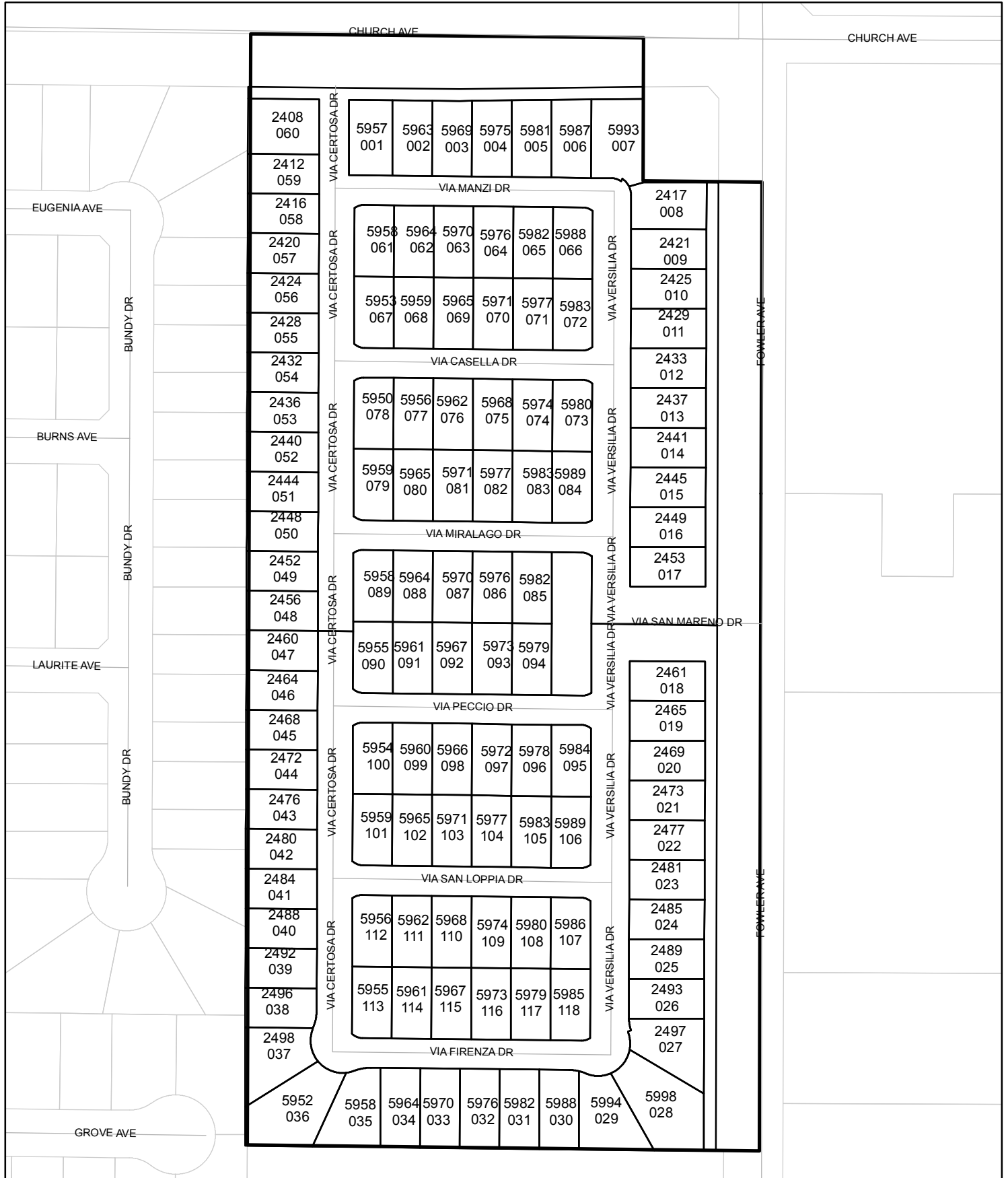




Street Names, Addresses and (Lot Numbers) for T5450

Prepared on Mon Oct 22 14:35:09 2018



TRACT NO. 5450

A PLANNED UNIT DEVELOPMENT
IN THE CITY OF FRESNO, COUNTY OF FRESNO, STATE OF CALIFORNIA
SURVEYED AND PLATTED IN JUNE 2005, BY GARY G. GIANNETTA

SHEET TWO OF TWO SHEETS

LEGEND:

- MONUMENT FOUND AND ACCEPTED AS NOTED
- SET 3/4" IRON PIPE, 30" LONG, 6" DOWN BELOW GROUND, TAGGED R.C.E. 26996
- SET 3/4" IRON PIPE, 30" LONG, 4" UP IN 6" DIAMETER x 30" P.C.C. MONUMENT, DOWN 6" BELOW GROUND, TAGGED R.C.E. 26996
- ▲ NOW OFFERED FOR DEDICATION FOR PUBLIC STREET PURPOSES
- ▲▲▲ INDICATES RELINQUISHMENT OF DIRECT ACCESS RIGHTS
- ▲▲▲▲ INDICATES RELINQUISHMENT OF DIRECT VEHICULAR ACCESS RIGHTS
- () RECORD DATA AS PER PARCEL MAP NO. 2004-27, RECORDED IN BOOK 64, PAGES 77 AND 78 OF PLATS, FRESNO COUNTY RECORDS
- △ PREVIOUSLY GRANTED TO THE CITY OF FRESNO FOR PUBLIC SEWER MAIN EASEMENT PURPOSES NOVEMBER 5, 1991 AS DOC. NO. 91136962, F.C.R.
- △ PREVIOUSLY DEEDED TO THE COUNTY OF FRESNO FOR PUBLIC ROAD PURPOSES MAY 6, 1887 IN VOLUME 61, PAGE 32 OF DEEDS, F.C.R.
- △ FRESNO METROPOLITAN FLOOD CONTROL DISTRICT PIPELINE EASEMENT RECORDED MAY 17, 2006 AS DOCUMENT NO. 2006-0103776, FRESNO COUNTY RECORDS.
- △ A 15 FOOT EXCLUSIVE EASEMENT AND RIGHT-OF-WAY FOR STORM DRAINAGE PIPELINE PURPOSES DEEDED TO FRESNO METROPOLITAN FLOOD CONTROL DISTRICT ON November 21 2006 AS DOCUMENT NO. 2006-0245831.
- CALC CALCULATED FROM RECORD DATA
- F.C.R. FRESNO COUNTY RECORDS
- PE PEDESTRIAN EASEMENT NOW OFFERED FOR DEDICATION FOR PUBLIC USE
- PUE PUBLIC UTILITY EASEMENT NOW OFFERED FOR DEDICATION FOR PUBLIC USE
- (R) DENOTES RADIAL BEARING TO CURVE
- B/PT BICYCLE/PEDESTRIAN TRAIL EASEMENT NOW OFFERED FOR PUBLIC USE.
- CITY CITY OF FRESNO BOUNDARY
- COUNTY COUNTY OF FRESNO BOUNDARY
- BLUE BORDER INDICATES THE LIMITS OF THIS SUBDIVISION

BASIS OF BEARINGS

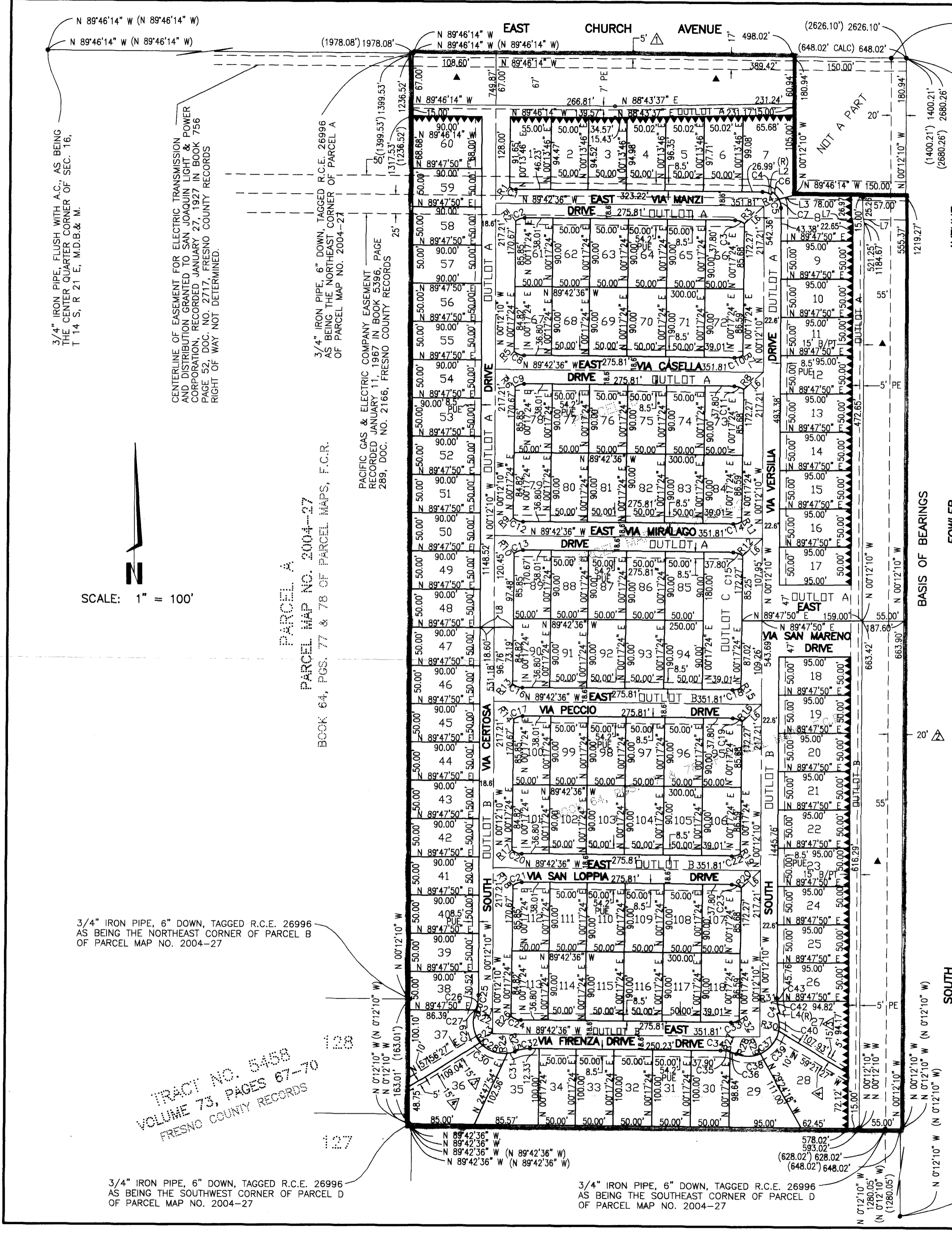
THE EAST LINE OF THE SOUTHEAST QUARTER OF SECTION 14 SOUTH, RANGE 21 EAST, MOUNT DIABLO BASE AND MERIDIAN TAKEN AS BEARING NORTH 0°12'10" WEST AS PER PARCEL MAP NO. 2004-27, RECORDED IN BOOK 64, PAGES 77 AND 78 OF PLATS, FRESNO COUNTY RECORDS.

NOTE:

1. SET 3/4" IRON PIPE, 6" DOWN, TAGGED R.C.E. 26996 AT ALL LOT CORNERS, BLOCK CORNERS, ANGLE POINTS AND CURVE POINTS
2. OUTLOT A AND B NOW OFFERED FOR DEDICATION FOR PUBLIC UTILITY PURPOSES
3. OUTLOT A AND B FOR PRIVATE ACCESS AND LANDSCAPING PURPOSES
4. OUTLOT C FOR LANDSCAPE AND OPEN SPACE PURPOSES
5. A HOLD ON OCCUPANCY IS IN EFFECT FOR LOTS 1 THROUGH 8 AND LOTS 58 AND 59 UNTIL SUCH TIME PG & E QUILTCLAMS ITS EXCLUSIVE EASEMENT RECORDED JANUARY 11, 1967 IN BOOK 5396, PAGE 289 AS DOCUMENT NO. 2166, F.C.R.

RADIAL	DIRECTION	CURVE	RADIUS	LENGTH	TANGENT	DELTA
R1	N 35°16'17" E	C1	15.30'	9.34'	4.82'	34°58'53"
R2	N 37°52'26" W	C2	19.40'	12.92'	6.71'	38°09'50"
R3	N 39°15'52" E	C3	19.40'	13.20'	6.87'	38°58'28"
R4	N 62°42'07" E	C4	20.60'	11.91'	6.13'	33°08'01"
R5	S 43°10'26" W	C5	24.60'	24.20'	13.18'	56°22'25"
R6	N 37°52'26" W	C6	24.60'	12.57'	6.43'	29°16'42"
R7	S 34°12'28" E	C7	24.60'	11.63'	5.93'	27°05'43"
R8	N 39°15'52" E	C8	19.40'	14.52'	7.62'	42°53'02"
R9	N 43°10'26" E	C9	19.40'	12.92'	6.71'	38°09'51"
R10	N 37°52'26" W	C10	19.40'	11.68'	6.02'	34°29'52"
R11	S 34°12'28" E	C11	19.40'	13.20'	6.87'	38°58'28"
R12	N 39°15'52" E	C12	19.40'	14.52'	7.62'	42°53'02"
R13	N 43°10'26" E	C13	19.40'	12.92'	6.71'	38°09'50"
R14	N 37°52'26" W	C14	19.40'	11.68'	6.02'	34°29'52"
R15	S 34°12'28" W	C15	19.40'	13.20'	6.87'	38°58'28"
R16	N 39°15'52" E	C16	19.40'	14.52'	7.62'	42°53'02"
R17	N 43°10'26" E	C17	19.40'	12.92'	6.71'	38°09'50"
R18	N 37°52'26" W	C18	19.40'	11.68'	6.02'	34°29'52"
R19	N 34°12'28" W	C19	19.40'	13.20'	6.87'	38°58'28"
R20	N 39°15'52" E	C20	19.40'	14.52'	7.62'	42°53'02"
R21	N 69°12'55" W	C21	19.40'	12.92'	6.71'	38°09'50"
R22	S 68°04'13" E	C22	19.40'	11.68'	6.02'	34°29'52"
R23	S 49°32'16" E	C23	19.40'	13.20'	6.87'	38°58'28"
R24	S 06°54'41" E	C24	19.40'	14.52'	7.62'	42°53'02"
R25	N 21°50'33" W	C25	54.40'	21.01'	10.64'	22°07'57"
R26	N 43°10'26" E	C26	54.40'	19.93'	10.08'	20°59'15"
R27	N 13°08'24" E	C27	54.40'	1.09'	0.54'	01°08'42"
R28	N 22°25'21" E	C28	40.60'	94.79'	95.12'	133°46'20"
R29	S 23°24'36" E	C29	40.60'	44.21'	24.58'	62°23'31"
R30	S 79°51'32" E	C30	40.60'	40.00'	21.79'	56°26'57"
R31	S 84°58'03" W	C31	40.60'	10.58'	5.32'	14°55'52"
R32	S 34°12'28" E	C32	54.40'	21.01'	10.64'	22°07'57"
R33	N 19°40'00" E	C33	19.40'	11.68'	6.02'	34°29'52"
R34	N 37°52'26" W	C34	54.40'	21.01'	10.64'	22°07'57"
R35	N 44°10'00" E	C35	54.40'	12.20'	6.13'	12°51'00"
R36	N 54°40'00" E	C36	54.40'	8.81'	4.42'	09°16'57"
R37	N 67°39'53" E	C37	40.60'	95.49'	97.43'	134°45'28"
R38	N 67°39'53" E	C38	40.60'	32.48'	17.16'	45°49'57"
R39	NOT USED	C39	40.60'	40.00'	21.79'	56°26'56"
R40	NOT USED	C40	40.60'	23.01'	11.82'	32°28'35"
R41	N 12°20'18" W	C41	50.40'	19.47'	9.86'	22°07'57"
R42	N 89°47'50" E	C42	50.40'	15.22'	7.67'	17°18'10"
R43	N 89°47'50" E	C43	50.40'	4.25'	2.13'	04°49'47"

LINE	DIRECTION	DISTANCE
L1	NOT USED	
L2	N 33°25'25" E	4.00'
L3	N 74°14'11" E	18.37'
L4	N 67°39'53" E	4.00'
L5	NOT USED	
L6	N 48°18'42" E	34.26'
L7	N 12°20'18" W	9.51'
L8	N 89°47'50" E	43.91'



TRACT NO. 5450
VOLUME 73, PAGES 67-70
FRESNO COUNTY RECORDS