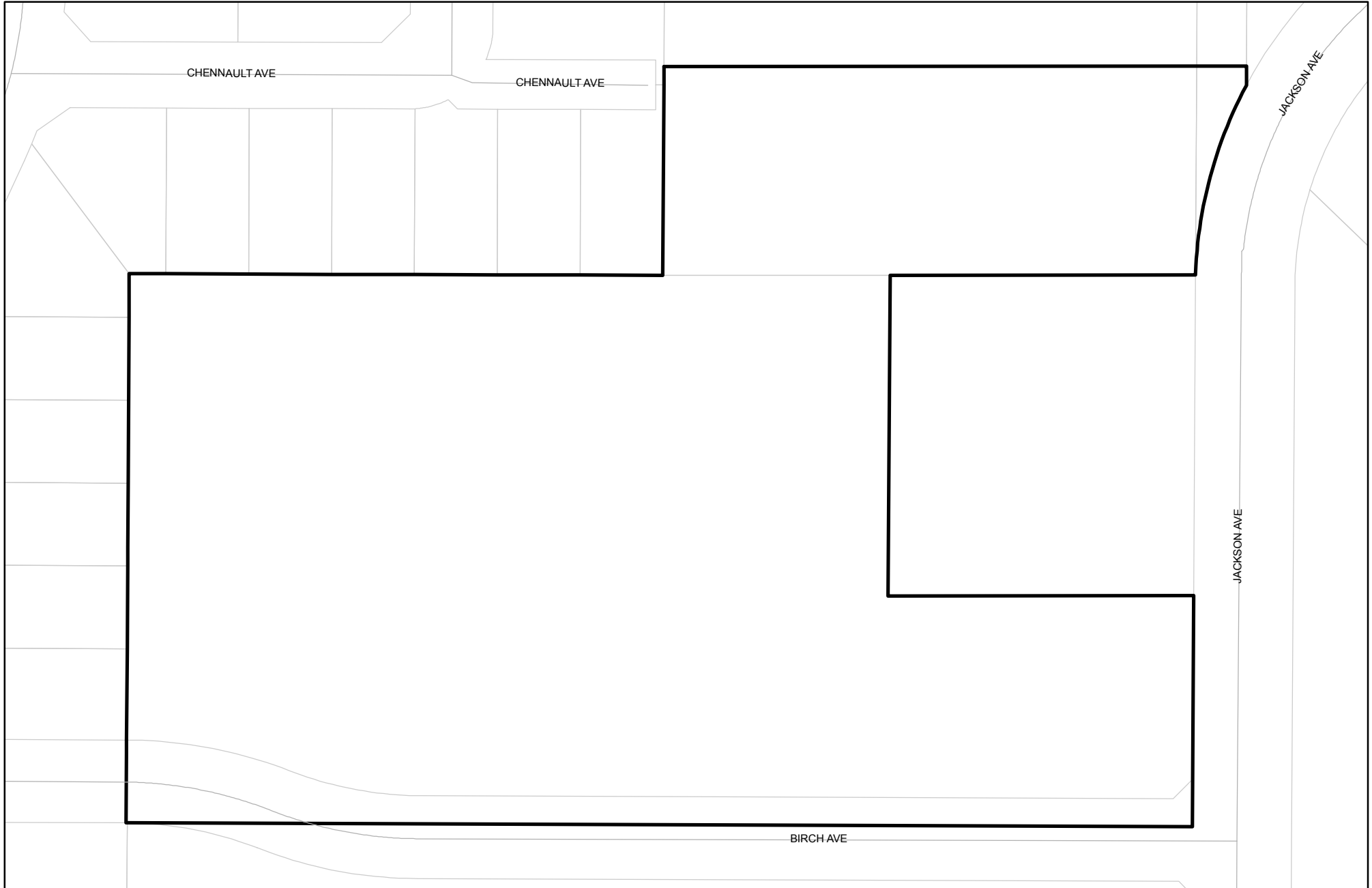




Prepared on Tue Apr 02 13:53:21 2013

Street Names, Addresses and (Lot Numbers) for T5428



FINAL MAP OF TRACT NO. 5428

FOR CONDOMINIUM PURPOSES
 A PORTION OF LOTS 13 & 14 OF THE AMENDED
 PERRIN COLONY NO. 2, RECORDED IN VOLUME 4,
 PAGE 68 OF PLATS OF FRESNO COUNTY RECORDS
 IN THE CITY OF FRESNO, COUNTY OF FRESNO,
 STATE OF CALIFORNIA
 IN THE SOUTHEAST QUARTER OF SECTION 35,
 TOWNSHIP 12 SOUTH, RANGE 20 EAST, MOUNT
 DIABLO BASE AND MERIDIAN
 SHEET TWO OF THREE SHEETS

LEGEND

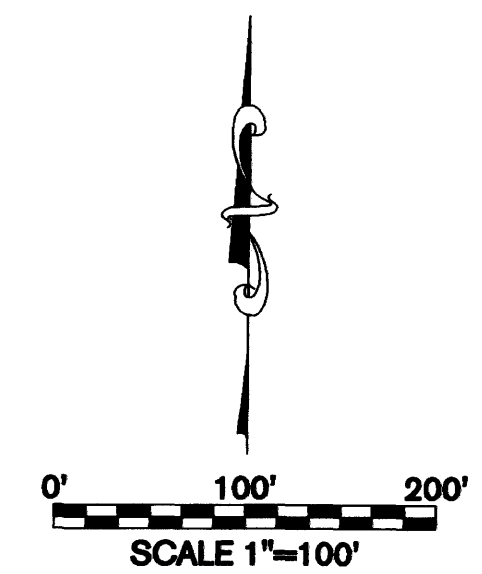
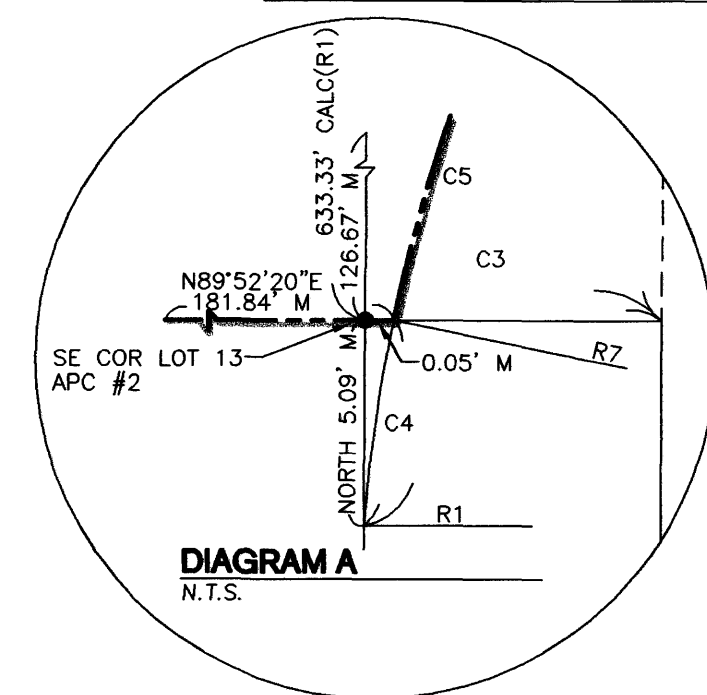
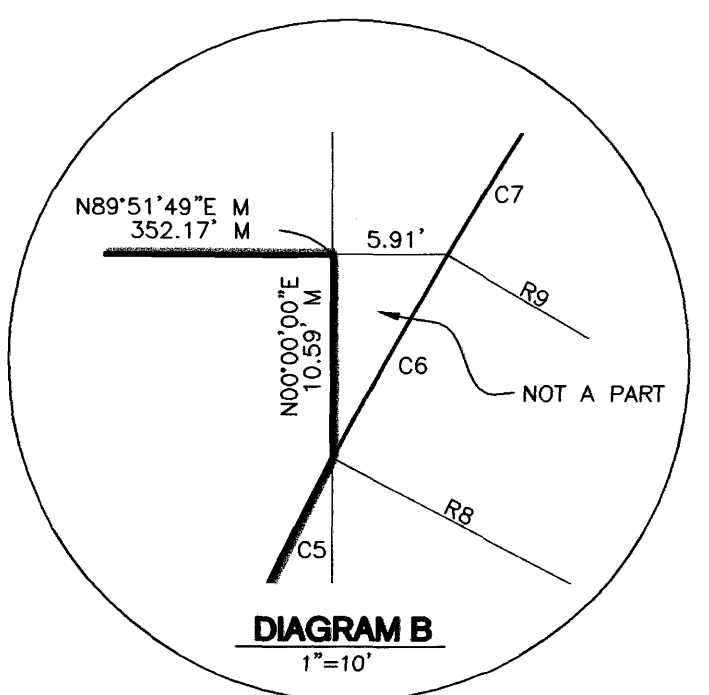
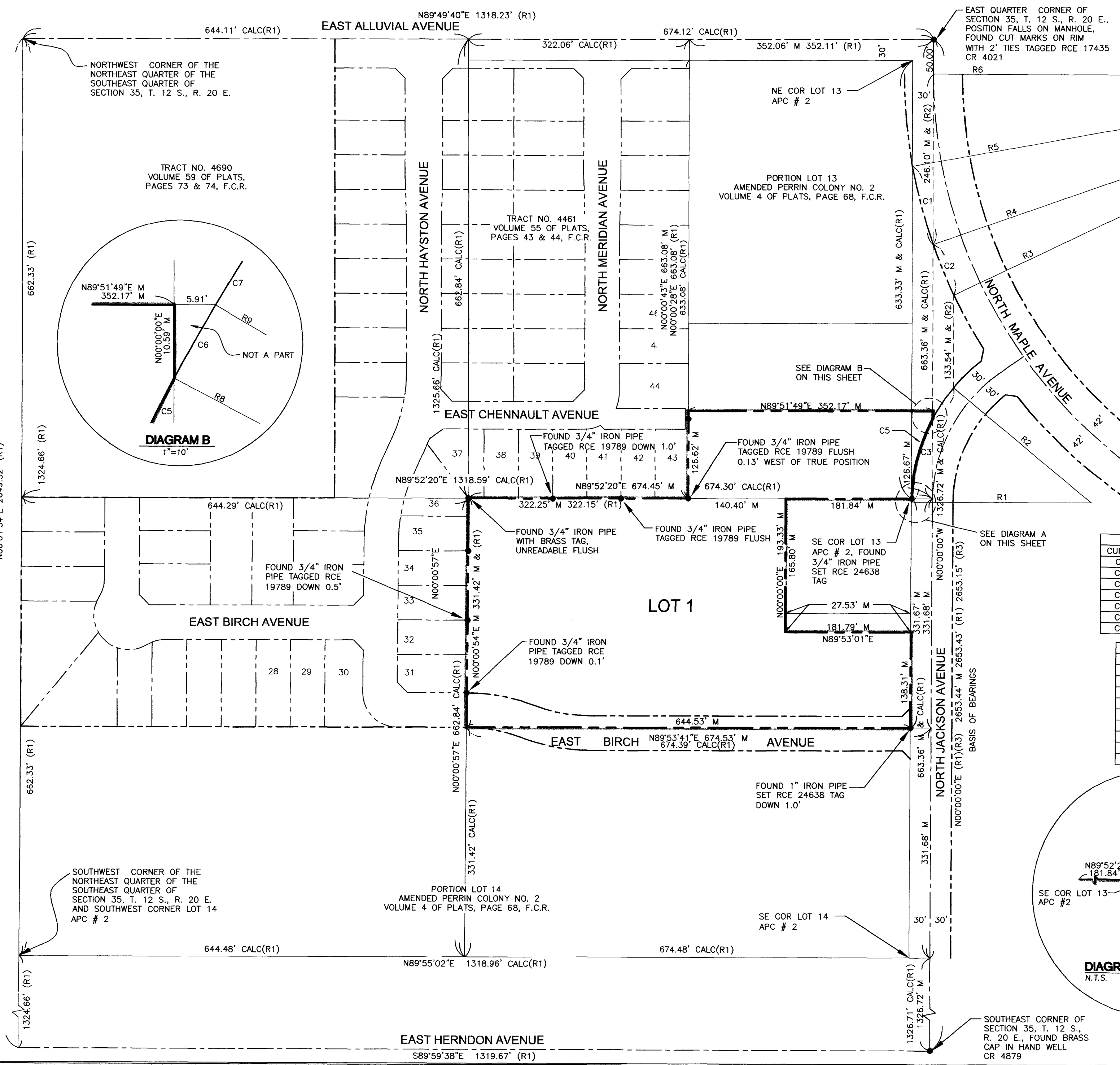
- FOUND 3/4" IRON PIPE TAGGED RCE 19789 DOWN 0.30' UNLESS OTHERWISE NOTED.
- M DENOTES MEASURED DATA
- (R1) RECORD DATA PER MAP OF TRACT NO. 4461 RECORDED IN VOLUME 55 OF PLATS AT PAGES 43 & 44, FRESNO COUNTY RECORDS.
- (R2) RECORD DATA PER VACATION RESOLUTION NO. 92-352 RECORDED AUGUST 2, 1994 AS DOCUMENT NO. 94121124, OFFICIAL RECORDS OF FRESNO COUNTY.
- (R3) RECORD DATA PER PARCEL MAP NO. 1996 RECORDED IN BOOK 13 OF PARCEL MAPS AT PAGE 53, FRESNO COUNTY RECORDS.
- APC # 2 AMENDED PERRIN COLONY NO. 2 RECORDED IN VOLUME 4 OF PLATS, PAGE 68, F.C.R.
- CALC CALCULATED FROM RECORD DATA
- CR CORNER RECORD ON FILE WITH COUNTY SURVEYOR.
- THE BLUE BORDER INDICATES THE LIMITS OF THE SUBDIVISION.

BASIS OF BEARINGS

THE EAST LINE OF THE SOUTHEAST QUARTER OF SECTION 35, T.12S., R.20E., ALSO BEING THE CENTERLINE OF NORTH JACKSON AVENUE WAS TAKEN TO BE N00°00'00"E AS SHOWN ON PARCEL MAP NO. 1996, FILED FOR RECORD IN BOOK 13 OF PARCEL MAPS, PAGE 53, FRESNO COUNTY RECORDS.

CURVE TABLE						
CURVE	LENGTH M	RADIUS M	DELTA M	LENGTH (R2)	RADIUS (R2)	DELTA (R2)
C1	117.22'	742.00'	9'03"06"	117.22'	742.00'	9'03"06"
C2	78.73'	742.00'	6'04"46"	78.31'	742.00'	6'04"46"
C3	180.22'	260.00'	39'42"54"	180.22'	260.00'	39'42"56"
C4	5.09'	260.00'	1'07"22"			
C5	121.04'	260.00'	26'40"23"			
C6	12.14'	260.00'	2'40"31"			
C7	41.95'	260.00'	9'14"38"			

RADIAL TABLE				
RADIAL	LENGTH M	BEARING M	LENGTH (R2)	BEARING (R2)
R1	260.00'	N90°00'00"W	260.00'	S89°57'39"W
R2	260.00'	N50°17'06"W	260.00'	N50°19'25"W
R3	742.00'	S64°33'02"W	742.00'	S64°30'41"W
R4	742.00'	S70°37'48"W	742.00'	S70°35'27"W
R5	742.00'	S79°40'54"W	742.00'	S79°38'33"W
R6	700.00'	N90°00'00"W	700.00'	S89°57'39"W
R7	260.00'	N88°52'38"W		
R8	260.00'	N62°12'15"W		
R9	260.00'	N59°31'44"W		



PREPARED BY:
LARS ANDERSEN AND ASSOCIATES, INC
 4630 W. JACQUELYN AVE SUITE 119 FRESNO, CA 93722
 (559)276-2790 FAX (559)276-0850 WWW.LARSANDERSEN.COM
 PROJECT NO. 03015.00 7-18-05 SHEET 2 OF 3 SHEETS