



Prepared on Mon Oct 22 14:42:09 2018

# Street Names, Addresses and (Lot Numbers) for T5424





# FINAL MAP OF TRACT 5424 PHASE I OF VESTING TENTATIVE MAP 5424 SIENA

IN THE CITY OF FRESNO, FRESNO COUNTY,  
CALIFORNIA SHEET 3 OF 4 SHEETS

**NOTE.**

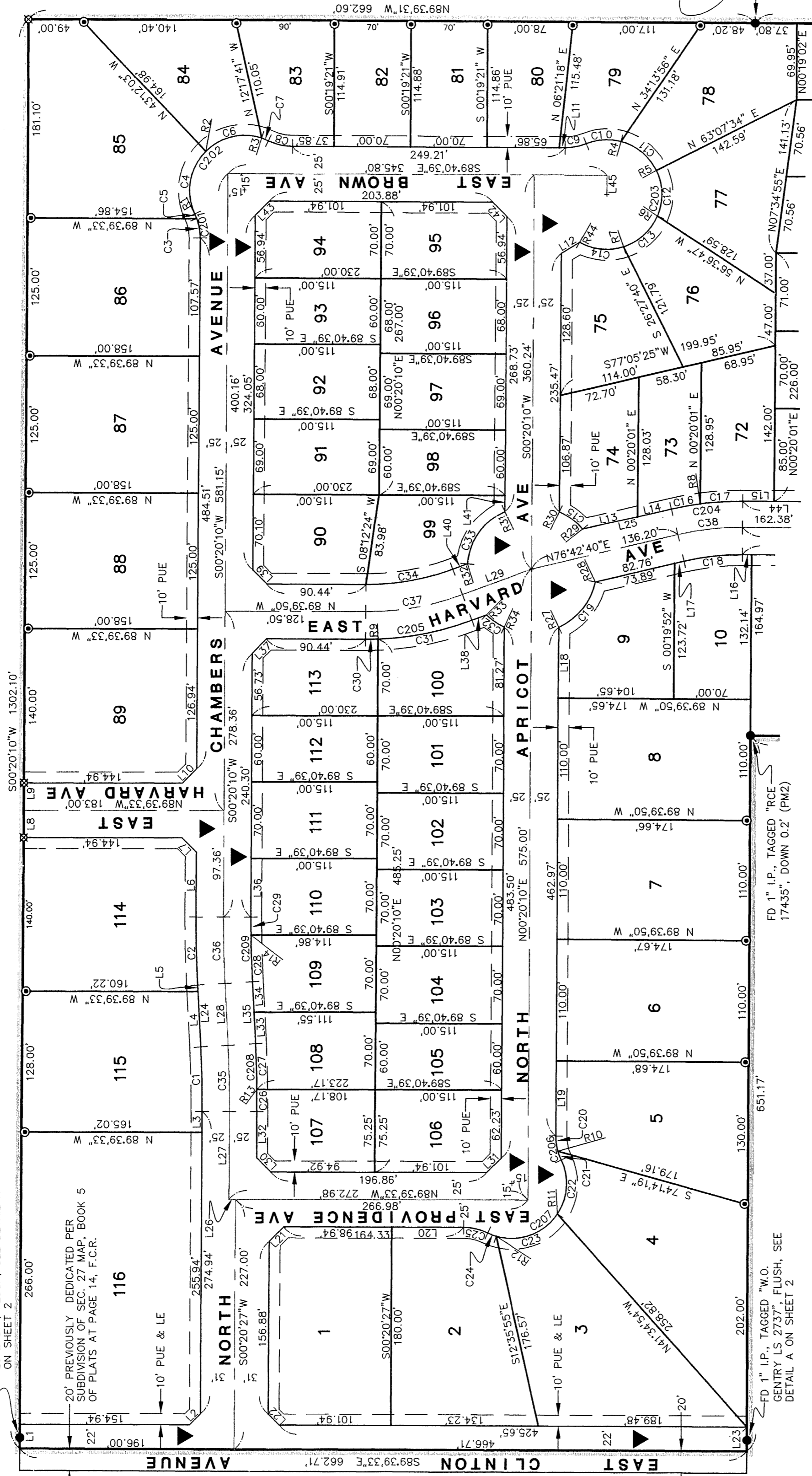
SET 3/4" X 30" IRON PIPE, DOWN 0.5', TAGGED "LS 7680", AT ALL LOT CORNERS, BLOCK CORNERS, ANGLE POINTS AND CURVE POINTS UNLESS OTHERWISE NOTED.

**BASIS OF BEARINGS**

THE CCSS83 ZONE 4 GRID BEARING BETWEEN "HPGN D CA 06 RC" AND "HPGN D CA 06 PH" TAKEN AS S33°43'56.1"E.

FD 1" I.P., TAGGED "W.O. GENTRY LS 2737", FLUSH, SEE DETAIL A ON SHEET 2.

20' PREVIOUSLY DEDICATED PER SUBDIVISION OF SEC. 27 MAP, BOOK 5 OF PLATS AT PAGE 14, F.C.R.

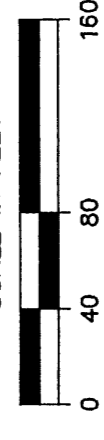


**LEGEND:**

- MONUMENT FOUND AND ACCEPTED AS DESCRIBED
- ⊙ SET REAR LOT CORNERS AS WITNESS CORNERS AT THE INTERSECTION OF THE LOT LINE AND A LINE PARALLEL WITH AND 3.00 FEET FROM THE REAR LOT LINE AND ARE MARKED BY A 3/4" X 30" IRON PIPE, DOWN 0.5', TAGGED "LS 7680"
- ⊠ CALCULATED POSITION - NO MONUMENT SET
- ▶ NOW OFFERED FOR PUBLIC STREET AND UTILITY PURPOSES
- PM2 INDICATES RECORD DATA PER PARCEL MAP No. 2140, BOOK 12 PAGE 100 OF PARCEL MAPS, F.C.R.
- PUE PUBLIC UTILITY EASEMENT
- LE LANDSCAPE EASEMENT
- CFR CALCULATED FROM RECORD
- FCR FRESNO COUNTY RECORDS
- ▬ SUBDIVISION BOUNDARY



SCALE IN FEET



CURVE	RADIUS	LENGTH	DELTA
C201	50.00	22.55	25°50'31"
C202	50.00	123.63	141°40'13"
C203	50.00	202.07	231°33'52"
C204	275.00	65.38	13°37'21"
C205	275.00	99.30	20°41'21"
C206	50.00	22.55	25°50'31"
C207	50.00	123.65	141°41'19"
C208	1025.00	62.03	3°28'02"
C209	975.00	58.92	3°27'44"

CURVE	RADIUS	LENGTH	DELTA
C23	50.00	64.00	73°20'19"
C24	50.00	8.06	9°14'09"
C25	50.00	22.55	25°50'31"
C26	1025.00	20.22	1°07'48"
C27	1025.00	41.81	2°20'13"
C28	975.00	42.49	2°29'48"
C29	975.00	16.43	0°57'56"
C30	275.00	11.50	2°23'48"
C31	275.00	87.80	18°17'33"
C32	59.00	19.74	19°10'14"
C33	59.00	62.35	60°32'55"
C34	225.00	81.25	20°41'21"
C35	1000.00	60.51	3°28'01"
C36	1000.00	60.43	3°27'44"
C37	250.00	90.27	20°41'20"
C38	250.00	59.44	13°37'21"

CURVE	RADIUS	LENGTH	DELTA
C1	975.00	53.00	3°28'01"
C2	1025.00	61.94	3°27'44"
C3	50.00	17.61	20°24'24"
C4	50.00	61.82	70°50'06"
C5	50.00	4.74	5°26'07"
C6	50.00	55.00	6°30'32"
C7	50.00	6.82	7°48'35"
C8	50.00	22.55	25°50'31"
C9	50.00	19.49	22°19'54"
C10	50.00	32.07	36°45'11"
C11	50.00	43.00	49°16'28"
C12	50.00	43.00	49°16'28"
C13	50.00	43.00	49°16'28"
C14	50.00	43.00	49°16'28"
C15	59.00	27.02	46°36'57"
C16	275.00	26.52	26°14'05"
C17	275.00	38.86	35°13'33"
C18	225.00	53.50	8°05'48"
C19	59.00	53.50	13°37'21"
C20	50.00	14.14	53°29'05"
C21	50.00	8.41	16°12'18"
C22	50.00	51.59	9°36'13"
C23	50.00	51.59	9°36'13"

LINE	BEARING	LENGTH
R1	S69°55'46"W	174.66
R2	S44°40'15"E	174.66
R3	N18°21'17"E	174.66
R4	S14°44'36"W	174.66
R5	N64°01'06"E	174.66
R6	N66°42'26"W	174.66
R7	S17°25'58"E	174.66
R8	S07°45'47"E	174.66
R9	N02°03'36"W	174.66
R10	N74°07'52"E	174.66
R11	N56°23'30"W	174.66
R12	S16°56'49"W	174.66
R13	S89°12'39"W	174.66
R14	N89°22'14"E	174.66
R15	N24°44'03"W	174.66
R16	N24°44'03"W	174.66
R17	S78°13'08"E	174.66
R18	S51°38'27"W	174.66
R19	N25°24'22"E	174.66
R20	N25°24'22"E	174.66
R21	S24°44'03"E	174.66
R22	N85°16'58"W	174.66
R23	N44°34'36"E	174.66
R24	S25°24'22"W	174.66
R44	N28°32'59"E	174.66

LINE	BEARING	LENGTH
L24	N03°07'34"W	55.87
L25	N76°42'40"E	82.76
L26	S89°39'33"E	6.00
L27	S00°20'27"W	80.00
L28	N03°07'34"W	55.87
L29	N69°38'48"E	67.53
L30	S44°39'33"E	18.47
L31	N45°20'19"E	18.47
L32	S00°20'27"W	41.94
L33	N03°07'34"W	28.28
L34	N03°07'34"W	27.60
L35	N03°07'34"W	55.87
L36	S00°20'10"W	53.57
L37	S45°20'19"E	18.47
L38	N69°38'48"E	14.09
L39	S44°39'33"E	18.47
L40	N69°38'48"E	14.09
L41	N76°42'40"E	8.87
L42	N00°20'10"E	64.58
L43	S89°39'33"E	68.39
L44	S45°19'45"W	18.47
L45	N89°39'59"W	108.94
L23	N00°19'21"E	17.50
L22	S44°39'33"E	22.00
L21	N00°19'21"E	22.00

LINE	BEARING	LENGTH
L1	S00°20'10"W	22.00
L2	N45°20'27"E	14.23
L3	N00°20'27"E	19.00
L4	N03°07'34"W	50.13
L5	N03°07'34"W	5.75
L6	N00°20'10"E	59.31
L7	N44°39'41"W	18.47
L8	S00°20'10"W	25.00
L9	S00°20'10"W	25.00
L10	N45°20'19"E	18.47
L11	S89°40'39"E	5.50
L12	S88°25'43"W	19.32
L13	N76°42'40"E	31.60
L14	N76°42'40"E	51.16
L15	N89°39'59"W	28.38
L16	N89°39'59"W	8.39
L17	N76°42'40"E	8.87
L18	N00°20'10"E	64.58
L19	S00°20'10"W	68.39
L20	S89°39'33"E	65.39
L21	S45°20'27"W	18.47
L22	S44°39'33"E	14.23
L23	N00°19'21"E	22.00

Prepared by  
**PROVOST & PRITCHARD**  
ENGINEERS GROUP  
EST. 1968  
288 WEST CROWLEY AVENUE  
FRESNO, CALIFORNIA 93711-6162  
559/449-2700 FAX 559/449-2715  
DATE: 11/3/05  
JOB NO.: 17020401  
DRAWING NO.: 20050467

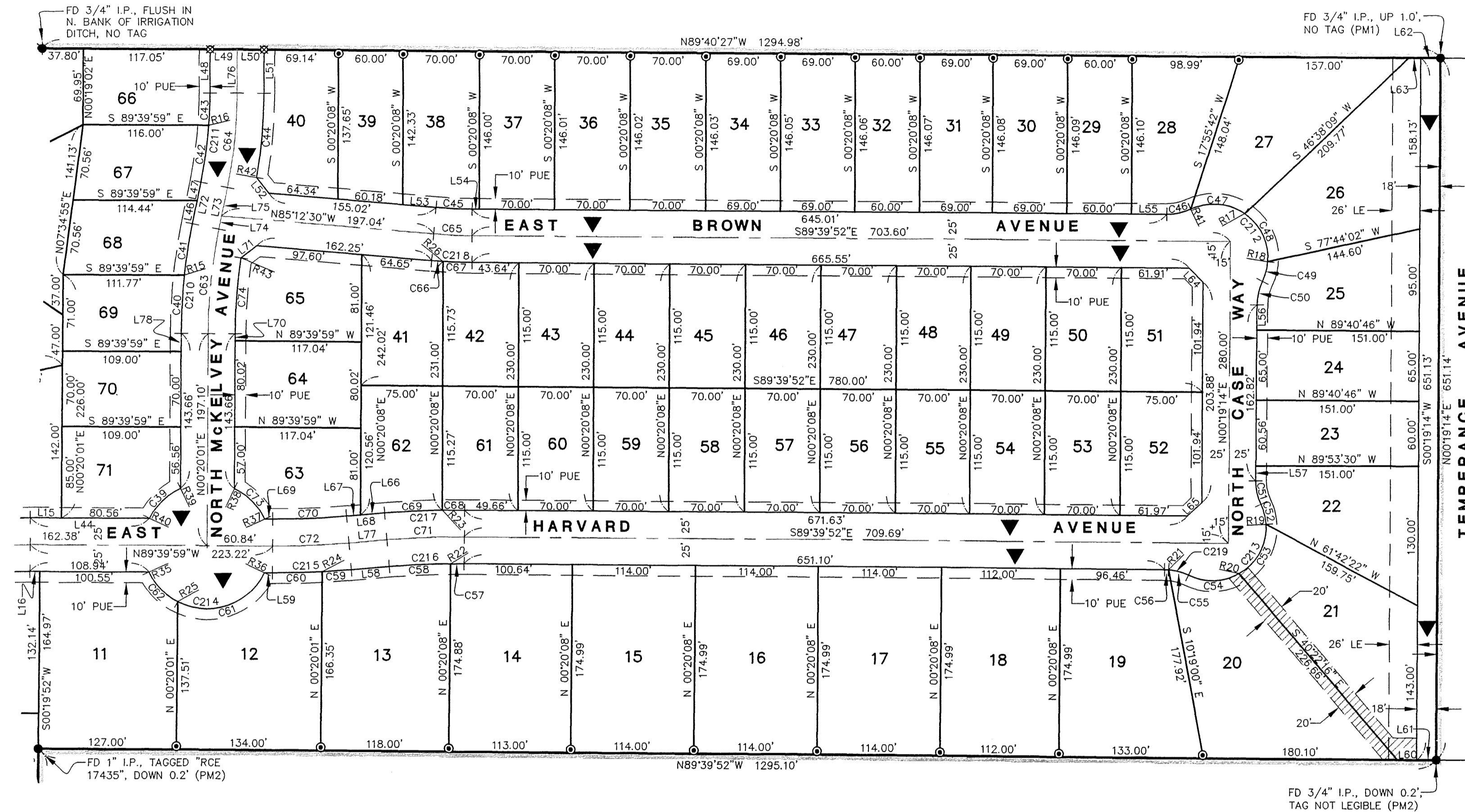
FINAL MAP OF  
**TRACT 5424**  
 PHASE I OF VESTING TENTATIVE MAP 5424  
**SIENA**  
 IN THE CITY OF FRESNO, FRESNO COUNTY,  
 CALIFORNIA SHEET 4 OF 4 SHEETS

**NOTE:**

SET 3/4" X 30" IRON PIPE, DOWN 0.5', TAGGED "LS 7680", AT ALL LOT CORNERS, BLOCK CORNERS, ANGLE POINTS AND CURVE POINTS UNLESS OTHERWISE NOTED.

**BASIS OF BEARINGS**

THE CCS83 ZONE 4 GRID BEARING BETWEEN "HPGN D CA 06 RG" AND "HPGN D CA 06 PH" TAKEN AS S33°43'56.1"E.



30' PREVIOUSLY DEDICATED PER SUBDIVISION OF SEC. 27 MAP, BOOK 5 OF PLATS AT PAGE 14, F.C.R.

**LEGEND:**

- MONUMENT FOUND AND ACCEPTED AS DESCRIBED
- ⊙ SET REAR LOT CORNERS AS WITNESS CORNERS AT THE INTERSECTION OF THE LOT LINE AND A LINE PARALLEL WITH AND 3.00 FEET FROM THE REAR LOT LINE AND ARE MARKED BY A 3/4" X 30" IRON PIPE, DOWN 0.5', TAGGED "LS 7680"
- ⊠ CALCULATED POSITION - NO MONUMENT SET
- ▼ NOW OFFERED FOR PUBLIC STREET AND UTILITY PURPOSES
- PM1 INDICATES RECORD DATA PER PARCEL MAP No. 1275, BOOK 6 PAGE 10 OF PARCEL MAPS, F.C.R.
- PM2 INDICATES RECORD DATA PER PARCEL MAP No. 2140, BOOK 12 PAGE 100 OF PARCEL MAPS, F.C.R.
- PUE PUBLIC UTILITY EASEMENT
- LE LANDSCAPE EASEMENT
- CFR CALCULATED FROM RECORD
- FCR FRESNO COUNTY RECORDS
- ▨ INDICATES 20 FOOT WIDE FRESNO METROPOLITAN FLOOD CONTROL DISTRICT PIPELINE EASEMENT, RECORD DOCUMENT No. \_\_\_\_\_ OFFICIAL RECORDS FRESNO COUNTY
- SUBDIVISION BOUNDARY

LINE	BEARING	LENGTH
L15	N89°39'59"W	28.38
L44	N89°39'59"W	108.94
L46	N11°32'26"E	22.29
L47	N11°32'26"E	17.51
L48	N00°19'02"E	40.07
L49	N89°40'27"W	25.00
L50	S89°40'27"E	25.00
L51	N00°19'02"E	40.06
L52	S37°44'55"E	18.49
L53	S85°12'30"E	30.51
L54	N89°39'52"W	6.56
L55	S89°39'52"E	32.45
L56	N00°19'14"E	23.45
L57	S00°19'14"W	13.81
L58	S84°55'19"W	35.20
L59	N89°39'59"W	7.40
L60	S89°39'52"E	18.00
L61	S89°39'52"E	18.00

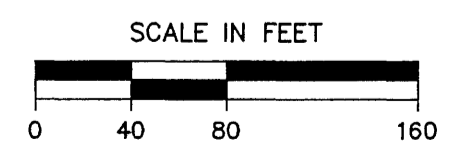
LINE	BEARING	LENGTH
L62	N89°40'27"W	18.00
L63	N89°40'27"W	11.00
L64	N44°40'19"W	18.47
L65	N45°19'41"E	18.47
L66	S84°55'19"W	22.33
L67	S84°55'19"W	12.87
L68	S84°55'19"W	35.20
L69	N89°39'59"W	7.40
L70	N00°20'01"E	6.63
L71	S51°51'35"W	18.50
L72	N11°32'26"E	39.80
L73	N11°32'26"E	39.80
L74	N11°32'26"E	12.65
L75	N11°32'26"E	27.15
L76	N00°19'02"E	40.07
L77	S84°55'19"W	35.20
L78	N00°20'01"E	17.10

LINE	BEARING
R15	S83°46'25"E
R16	N85°38'55"W
R17	N34°48'09"E
R18	N85°36'36"W
R19	N87°00'08"E
R20	N29°58'21"W
R21	S04°31'42"W
R22	S00°38'28"E
R23	S01°10'07"E
R24	N03°04'54"W
R25	N27°33'15"E
R26	N03°31'02"E
R35	N65°15'48"E
R36	S64°35'46"E
R37	S65°15'48"W
R38	N25°24'14"E
R39	S24°44'12"E
R40	N64°35'46"W
R41	S25°30'23"E
R42	N80°13'47"W
R43	S81°08'15"E

CURVE	RADIUS	LENGTH	DELTA
C39	59.00	41.05	39°51'34"
C40	525.00	54.00	5°53'34"
C41	525.00	48.69	5°18'51"
C42	425.00	53.33	7°11'21"
C43	425.00	29.92	4°02'03"
C44	475.00	78.37	9°27'11"
C45	425.00	33.05	4°27'22"
C46	50.00	22.55	25°50'31"
C47	50.00	52.63	60°18'32"
C48	50.00	52.00	59°35'15"
C49	50.00	19.00	21°46'21"
C50	50.00	22.55	25°50'31"
C51	50.00	22.55	25°50'31"
C52	50.00	19.66	22°31'25"
C53	50.00	55.00	63°01'31"
C54	50.00	49.00	56°08'59"
C55	50.00	18.89	21°38'56"
C56	50.00	3.66	4°11'34"

CURVE	RADIUS	LENGTH	DELTA
C57	725.00	12.36	0°58'36"
C58	725.00	56.14	4°26'13"
C59	775.00	27.00	1°59'47"
C60	775.00	46.20	3°24'55"
C61	59.00	94.89	92°09'01"
C62	59.00	38.83	37°42'33"
C63	500.00	97.80	11°12'25"
C64	450.00	88.15	11°13'24"
C65	450.00	35.00	4°27'22"
C66	475.00	10.57	1°16'28"
C67	475.00	26.38	3°10'54"
C68	775.00	20.35	1°30'15"
C69	775.00	52.88	3°54'34"
C70	725.00	68.48	5°24'42"
C71	750.00	70.86	5°24'49"
C72	750.00	70.84	5°24'42"
C73	59.00	41.05	39°51'34"
C74	475.00	70.71	8°31'44"

CURVE	RADIUS	LENGTH	DELTA
C210	525.00	102.69	11°12'25"
C211	425.00	83.25	11°13'24"
C212	50.00	123.63	141°40'08"
C213	50.00	123.66	141°41'55"
C214	59.00	133.72	129°51'34"
C215	775.00	73.20	5°24'42"
C216	725.00	68.50	5°24'49"
C217	775.00	73.23	5°24'48"
C218	475.00	36.94	4°27'22"
C219	50.00	22.55	25°50'30"



Prepared by  
**PROVOST & PRITCHARD**  
 ENGINEERING GROUP  
 285 WEST CROWMELL AVENUE  
 FRESNO, CALIFORNIA 93711-6182  
 559/449-2700 FAX 559/449-2715  
 DATE: 11/3/05  
 JOB NO.: 17020401  
 DRAWING NO.: 20050467