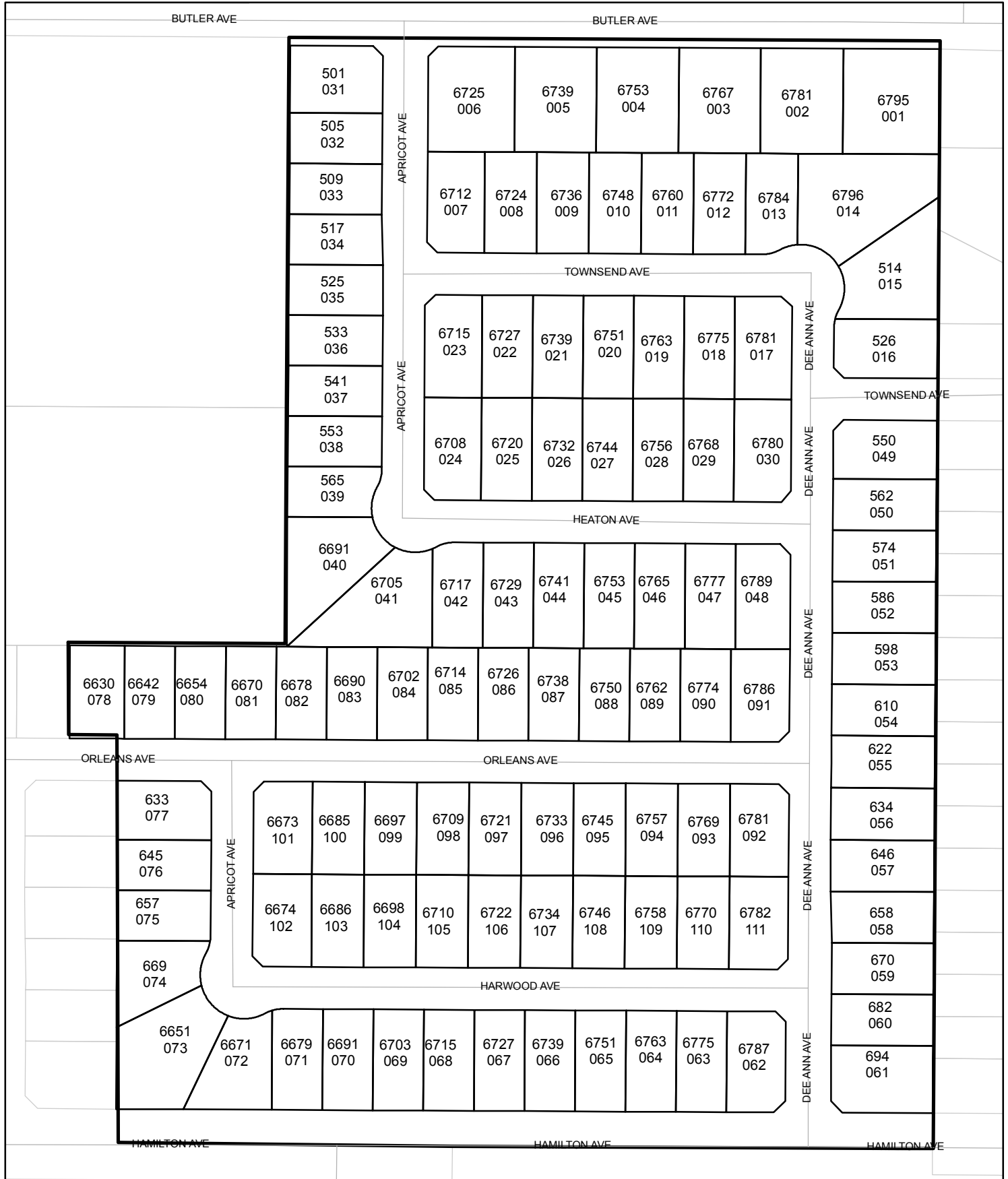




Street Names, Addresses and (Lot Numbers) for T5412

Prepared on Tue Apr 02 13:54:39 2013



FINAL MAP OF TRACT NO. 5412

PHASE II OF TENTATIVE TRACT NO. 4598

IN THE CITY OF FRESNO
FRESNO COUNTY, CALIFORNIA
SURVEYED AND PLATTED IN AUGUST, 2005
BY INGELS - BRAUN & ASSOCIATES
CONSISTING OF THREE SHEETS
SHEET 2 OF 3 SHEETS

SEE SHEET THREE FOR LINE,
CURVE, RADIAL TABLES,
AND FOUND MONUMENTS

BASIS OF BEARINGS

THE WEST LINE OF THE SOUTHEAST QUARTER OF SECTION 10, T.14 S., R.21 E., M.D.B. & M. WAS TAKEN TO BE N 00°06'00" W, (SAID LINE ALSO BEING THE CENTERLINE OF SOUTH ARMSTRONG AVENUE), PER TRACT NO. 4598, RECORDED IN VOLUME 70 OF PLATS AT PAGE(S)61&62, FRESNO COUNTY RECORDS.

LEGEND

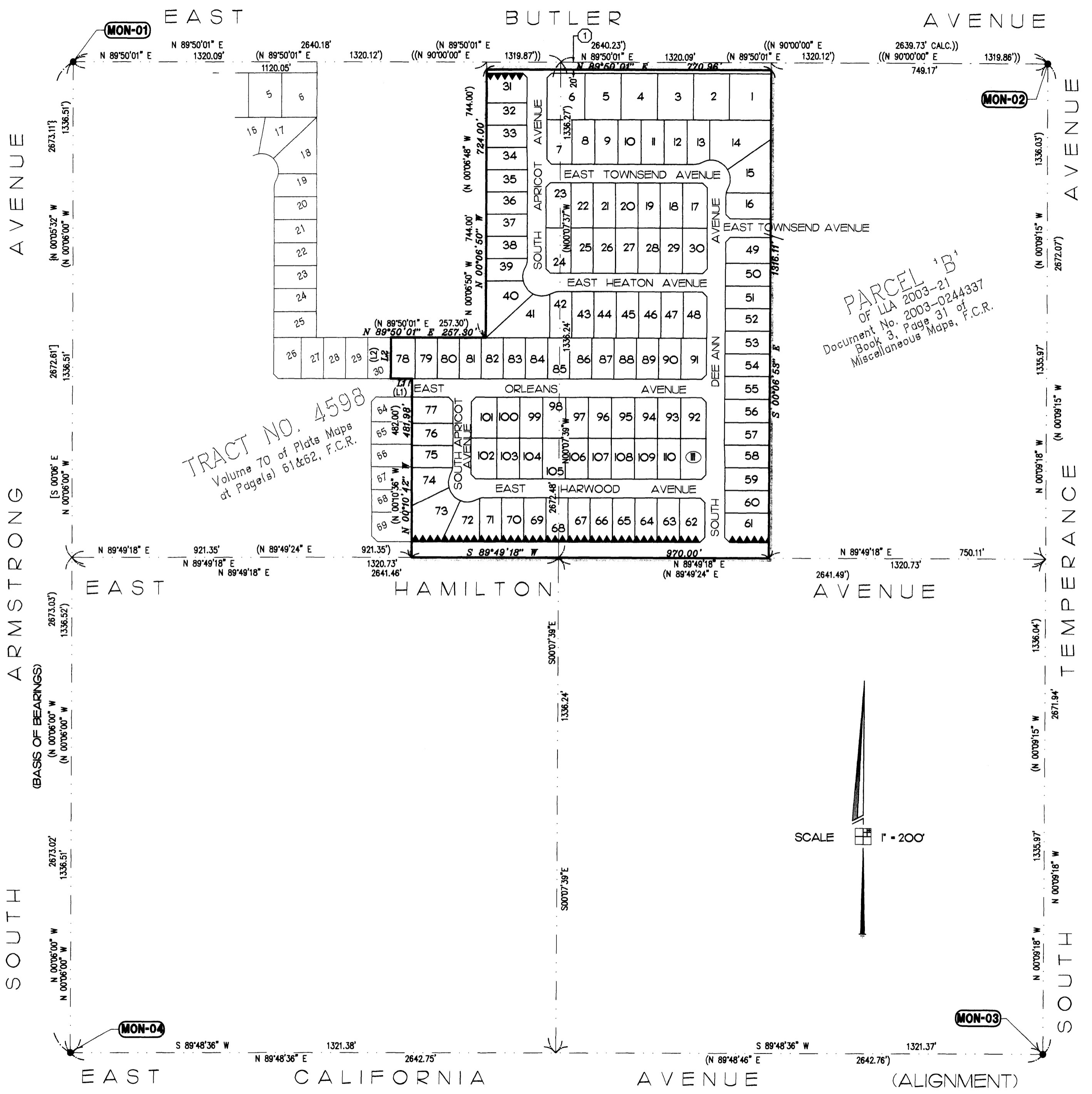
- EXISTING MONUMENT FOUND AND ACCEPTED OR AS NOTED.
- (...) RECORD DATA PER TRACT NO. 4598, RECORDED IN VOLUME 70 OF PLATS AT PAGE(S)61&62, F.C.R.
- [...] RECORD DATA PER TRACT NO. 1784, RECORDED IN VOLUME 20 OF PLATS AT PAGE 38, F.C.R.
- { ... } RECORD DATA PER PARCEL MAP NO. 91-41, RECORDED IN BOOK 53 OF PARCEL MAPS AT PAGES 5 AND 6, F.C.R.
- ((...)) RECORD DATA PER TRACT NO. 1612, RECORDED IN VOLUME 20 OF PLATS AT PAGE 37, F.C.R.
- C.R. CORNER RECORD ON FILE WITH FRESNO COUNTY SURVEYOR'S OFFICE.
- F.C.R. FRESNO COUNTY RECORDS
- O.R.F.C. OFFICIAL RECORDS FRESNO COUNTY
- PE PEDESTRIAN EASEMENT NOW OFFERED FOR DEDICATION FOR PUBLIC USE.
- PUE PUBLIC UTILITY EASEMENT NOW OFFERED FOR DEDICATION FOR PUBLIC USE.
- LE LANDSCAPE EASEMENT NOW OFFERED FOR DEDICATION FOR PUBLIC USE.
- PPUE PLANTING AND PUBLIC UTILITY EASEMENT NOW OFFERED FOR DEDICATION FOR PUBLIC USE.
- ① PORTION PREVIOUSLY DEEDED TO THE COUNTY OF FRESNO FOR PUBLIC STREET PURPOSES, PER DEED RECORDED FEBRUARY 23, 1939 IN BOOK 1724, PAGE 461, F.C.R.
- ② PORTION PREVIOUSLY DEEDED TO THE COUNTY OF FRESNO METROPOLITAN FLOOD CONTROL DISTRICT, PER DOCUMENT NO. 20040230601, RECORDED OCTOBER 12, 2004 F.C.R.
- ▲▲▲ INDICATES RELINQUISHMENT OF DIRECT ACCESS RIGHTS.
- △ INDICATES PORTIONS NOW OFFERED FOR DEDICATION FOR PUBLIC STREET AND UTILITY PURPOSES.
- — — BLUE BORDER INDICATES THE LIMITS OF THIS SUBDIVISION.
- ⊙ SET 1" O.D. IRON PIPE, 30" LONG, UP 4", IN 6" DIA. x 30" CONCRETE MONUMENT DOWN 6" AND TAGGED LS 6619, EXCEPT AS NOTED.

NOTE :

1" O.D. x 30" LONG IRON PIPE TO BE SET 6" DOWN AND TAGGED LS-6619, AT ALL LOT CORNERS, ANGLE POINTS, BEGINNING OF CURVES AND END OF CURVES, OR AS NOTED WITHIN THE TIME SPECIFIED IN THE SUBDIVISION AGREEMENT FOR THIS TRACT.

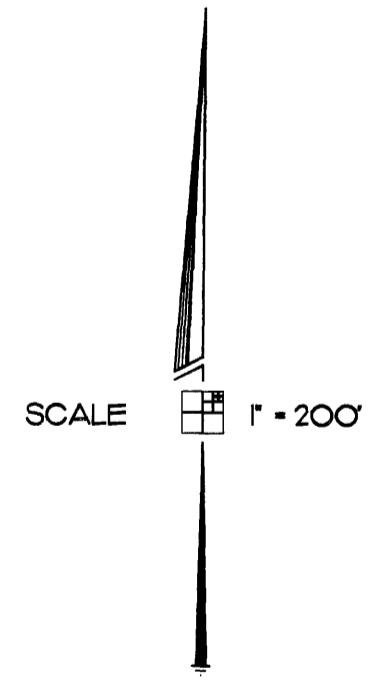
REVISIONS
6/30/05 - BLAU

BY: MARGRAF 08/28/2004
IBA CADFILE: 040855PM



PARCEL 'B'
OF LA 2003-21
Document No. 2003-0244337
Book 3, Page 31 of
Miscellaneous Maps, F.C.R.

TRACT NO. 4598
Volume 70 of Plats Maps
at Page(s) 61&62, F.C.R.



FINAL MAP OF TRACT NO. 5412

PHASE II OF TENTATIVE TRACT NO. 4598

IN THE CITY OF FRESNO
FRESNO COUNTY, CALIFORNIA
SURVEYED AND PLATTED IN AUGUST, 2005
BY INGELS - BRAUN & ASSOCIATES

CONSISTING OF THREE SHEETS
SHEET 3 OF 3 SHEETS

SEE SHEET TWO FOR BASIS
OF BEARINGS AND LEGEND

FOUND MONUMENTS: (MON-01)

- CENTER QUARTER CORNER OF SECTION 10, 14/21, M.D.B. & M., POSITION ESTABLISHED BY TIES PER FRESNO COUNTY C.R. #4708
- EAST QUARTER CORNER OF SECTION 10, 14/21, M.D.B. & M., POSITION ESTABLISHED BY TIES PER FRESNO COUNTY C.R. #6939
- SOUTHEAST CORNER OF SECTION 10, 14/21, M.D.B. & M., FOUND AND ACCEPTED BRASS CAP IN CONCRETE, DOWN 23", C.R. #6157
- SOUTH QUARTER CORNER OF SECTION 10, 14/21, M.D.B. & M., FOUND AND ACCEPTED 1 1/4" IRON PIPE, DOWN 3", TAGGED RCE 12769, C.R. #2521

CURVE TABLE

CURVE	RADIUS	LENGTH	CHORD	DELTA
C1	45.00'	22.62'	22.38'	28°48'08"
C2	52.00'	134.01'	99.88'	147°39'24"
C3	45.00'	22.62'	22.38'	28°48'08"
C4	45.00'	22.62'	22.38'	28°48'08"
C5	52.00'	134.01'	99.88'	147°39'24"
C6	45.00'	22.62'	22.38'	28°48'08"
C7	45.00'	22.62'	22.38'	28°48'08"
C8	52.00'	134.02'	99.89'	147°40'07"
C9	45.00'	22.62'	22.38'	28°48'08"
C10	52.00'	22.18'	22.02'	24°26'35"
C11	52.00'	57.83'	54.89'	63°42'54"
C12	52.00'	54.00'	51.61'	59°29'55"
C13	45.00'	11.89'	11.85'	15°08'13"
C14	45.00'	10.73'	10.71'	13°39'55"
C15	52.00'	37.27'	36.48'	41°04'01"
C16	52.00'	46.08'	44.59'	50°46'31"
C17	52.00'	46.09'	44.59'	50°46'43"
C18	52.00'	4.57'	4.57'	5°02'09"
C19	45.00'	6.80'	6.80'	8°39'51"
C20	45.00'	15.82'	15.74'	20°08'17"
C21	52.00'	38.95'	38.05'	42°54'57"
C22	52.00'	50.12'	48.20'	55°31'21"
C23	52.00'	44.95'	43.57'	49°31'49"
C24	45.00'	9.66'	9.64'	12°18'09"
C25	45.00'	12.96'	12.91'	16°29'59"

LINE TABLE

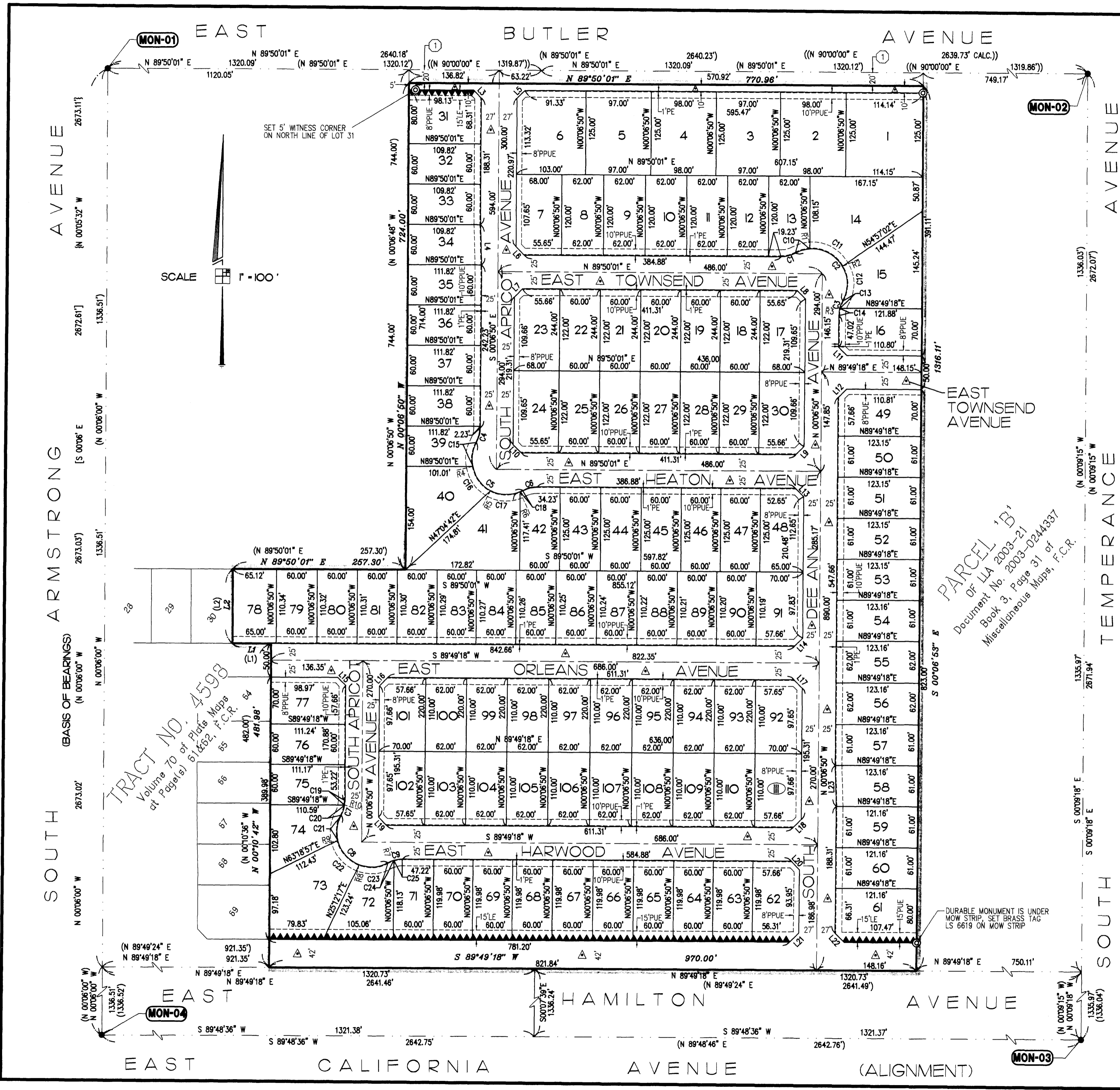
LINE	BEARING	LENGTH
L1	S89°49'18"W	57.62'
(L1)	S89°49'24"W	57.62'
L2	N00°10'42"W	110.35'
(L2)	N00°10'36"W	110.35'
L3	S45°08'25"E	16.53'
L4	S02°01'23"E	60.03'
L5	N44°50'41"E	16.52'
L6	N45°08'24"W	17.45'
L7	N44°51'35"E	17.46'
L8	S45°08'24"E	17.45'
L9	S44°51'35"W	17.46'
L10	N45°08'23"W	17.45'
L11	N45°08'46"W	17.45'
L12	N44°51'14"E	17.46'
L13	S45°08'25"E	17.45'
L14	S44°51'14"W	17.46'
L15	S45°08'57"E	17.45'
L16	N44°51'14"E	17.46'
L17	S45°08'46"E	17.45'
L18	S44°51'14"W	17.46'
L19	N45°08'46"W	17.45'
L20	S45°08'34"E	17.45'
L21	S44°52'11"W	19.36'
L22	N45°08'46"W	19.35'
L23	N01°59'31"W	61.03'

RADIAL TABLE

RADIAL	BEARING
R1	N04°31'32"W
R2	N59°11'22"E
R3	N76°26'55"W
R4	S77°37'16"W
R5	S26°50'45"W
R6	S23°55'58"E
R7	N16°40'41"W
R8	S20°32'59"W
R9	S75°46'20"W
R10	S81°26'59"E

REVISIONS
6/30/05 * BLAU

BY: MARGRAF 08/28/2004
IBA CADFILE: 04055FM



FINAL MAP OF TRACT NO. 5412
PHASE II OF TENTATIVE TRACT NO. 4598
 IN THE CITY OF FRESNO
 FRESNO COUNTY, CALIFORNIA
 SURVEYED AND PLATTED IN AUGUST, 2005
 BY INGELS - BRAUN & ASSOCIATES
 CONSISTING OF THREE SHEETS
 SHEET 3 OF 3 SHEETS

SEE SHEET TWO FOR BASIS OF BEARINGS AND LEGEND

FOUND MONUMENTS: (MON-01)

- CENTER QUARTER CORNER OF SECTION 10, 14/21, M.D.B. & M., POSITION ESTABLISHED BY TIES PER FRESNO COUNTY C.R. #4708
- EAST QUARTER CORNER OF SECTION 10, 14/21, M.D.B. & M., POSITION ESTABLISHED BY TIES PER FRESNO COUNTY C.R. #6939
- SOUTHEAST CORNER OF SECTION 10, 14/21, M.D.B. & M., FOUND AND ACCEPTED BRASS CAP IN CONCRETE, DOWN 23", C.R. #6157
- SOUTH QUARTER CORNER OF SECTION 10, 14/21, M.D.B. & M., FOUND AND ACCEPTED 1 1/4" IRON PIPE, DOWN 3", TAGGED RCE 12769, C.R. #2521

CURVE TABLE

CURVE	RADIUS	LENGTH	CHORD	DELTA
C1	45.00'	22.62'	22.38'	28°48'08"
C2	52.00'	134.01'	99.88'	147°39'24"
C3	45.00'	22.62'	22.38'	28°48'08"
C4	45.00'	22.62'	22.38'	28°48'08"
C5	52.00'	134.01'	99.88'	147°39'24"
C6	45.00'	22.62'	22.38'	28°48'08"
C7	45.00'	22.62'	22.38'	28°48'08"
C8	52.00'	134.02'	99.89'	147°40'07"
C9	45.00'	22.62'	22.38'	28°48'08"
C10	52.00'	22.18'	22.02'	24°26'35"
C11	52.00'	57.83'	54.89'	63°42'54"
C12	52.00'	54.00'	51.61'	59°29'55"
C13	45.00'	11.89'	11.85'	15°08'13"
C14	45.00'	10.73'	10.71'	13°39'55"
C15	52.00'	37.27'	36.48'	41°04'01"
C16	52.00'	46.08'	44.59'	50°46'31"
C17	52.00'	46.09'	44.59'	50°46'43"
C18	52.00'	4.57'	4.57'	5°02'09"
C19	45.00'	6.80'	6.80'	8°39'51"
C20	45.00'	15.82'	15.74'	20°08'17"
C21	52.00'	38.95'	38.05'	42°54'57"
C22	52.00'	50.12'	48.20'	55°31'21"
C23	52.00'	44.95'	43.57'	49°31'49"
C24	45.00'	9.66'	9.64'	12°18'09"
C25	45.00'	12.96'	12.91'	16°29'59"

LINE TABLE

LINE	BEARING	LENGTH
L1	S89°49'18"W	57.62'
(L1)	S89°49'24"W	57.62'
L2	N00°10'42"W	110.35'
(L2)	N00°10'36"W	110.35'
L3	S45°08'25"E	16.53'
L4	S02°01'23"E	60.03'
L5	N44°50'41"E	16.52'
L6	N45°08'24"W	17.45'
L7	N44°51'35"E	17.46'
L8	S45°08'24"E	17.45'
L9	S44°51'35"W	17.46'
L10	N45°08'23"W	17.45'
L11	N45°08'46"W	17.45'
L12	N44°51'14"E	17.46'
L13	S45°08'25"E	17.45'
L14	S44°51'14"W	17.46'
L15	S45°08'57"E	17.45'
L16	N44°51'14"E	17.46'
L17	S45°08'46"E	17.45'
L18	S44°51'14"W	17.46'
L19	N45°08'46"W	17.45'
L20	S45°08'34"E	17.45'
L21	S44°52'11"W	19.36'
L22	N45°08'46"W	19.35'
L23	N01°59'31"W	61.03'

RADIAL TABLE

RADIAL	BEARING
R1	N04°31'32"W
R2	N59°11'22"E
R3	N76°26'55"W
R4	S77°37'16"W
R5	S26°50'45"W
R6	S23°55'58"E
R7	N16°40'41"W
R8	S20°32'59"W
R9	S75°46'20"W
R10	S81°26'59"E

REVISIONS

REVISIONS
6/30/05 * BLAU

BY: MARGRAF 08/28/2004
 IBA CADFILE: 04055FM

City Documents\04055FM.dwg 6/28/2005 11:08:11 AM PST