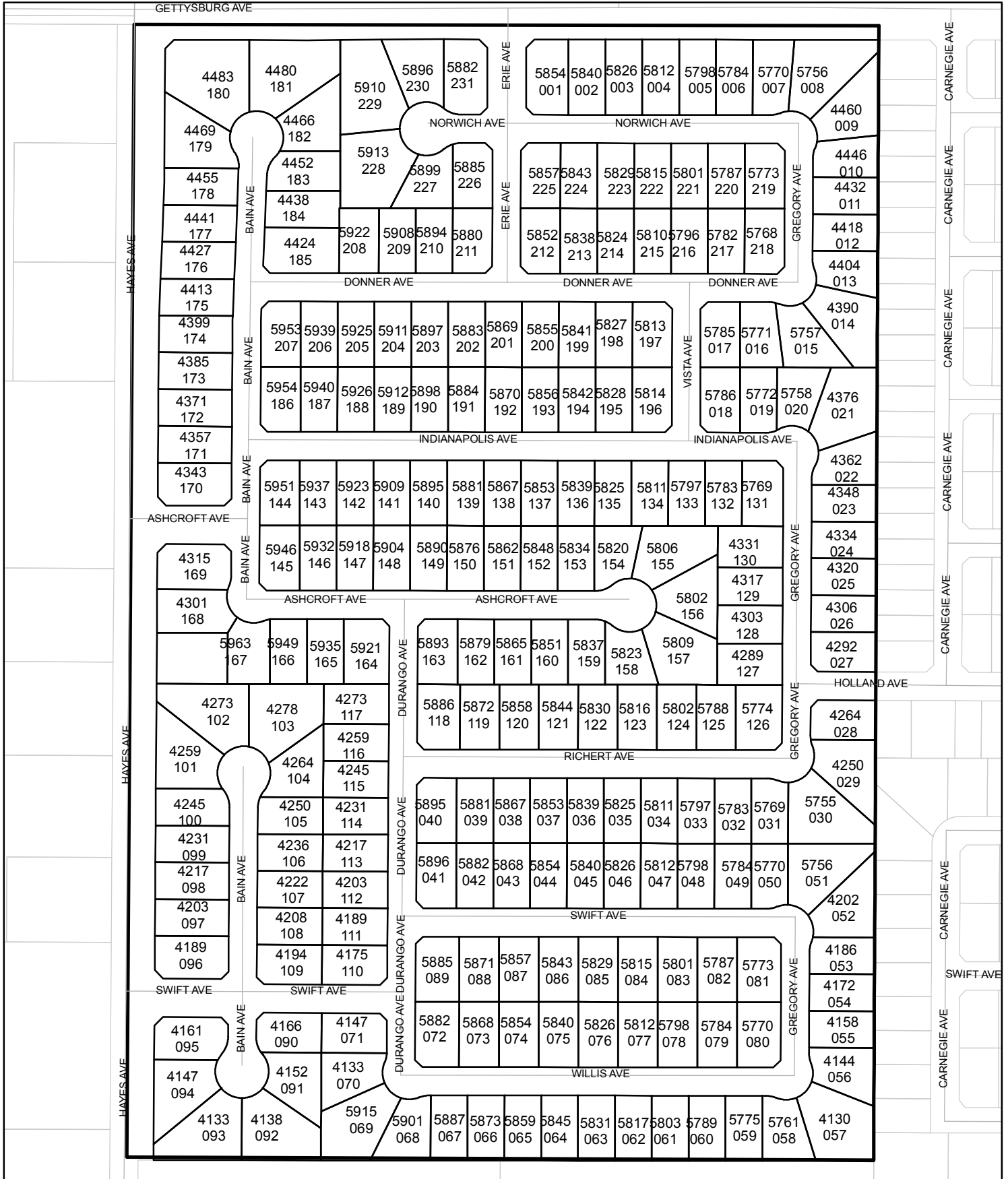




Street Names, Addresses and (Lot Numbers) for T5400

Prepared on Mon Oct 22 14:45:07 2018



TRACT NO. 5400

BEING A MERGER AND RESUBDIVISION OF A PORTION OF THE WEST HALF OF THE SOUTHWEST QUARTER OF SECTION 15, TOWNSHIP 13 SOUTH, RANGE 19 EAST, MOUNT DIABLO BASE AND MERIDIAN IN THE CITY OF FRESNO, COUNTY OF FRESNO, STATE OF CALIFORNIA SURVEYED AND PLATTED IN FEBRUARY 2006, BY GARY G. GIANNETTA

CONSISTING OF FOUR SHEETS
SHEET TWO OF FOUR SHEETS

BASIS OF BEARINGS

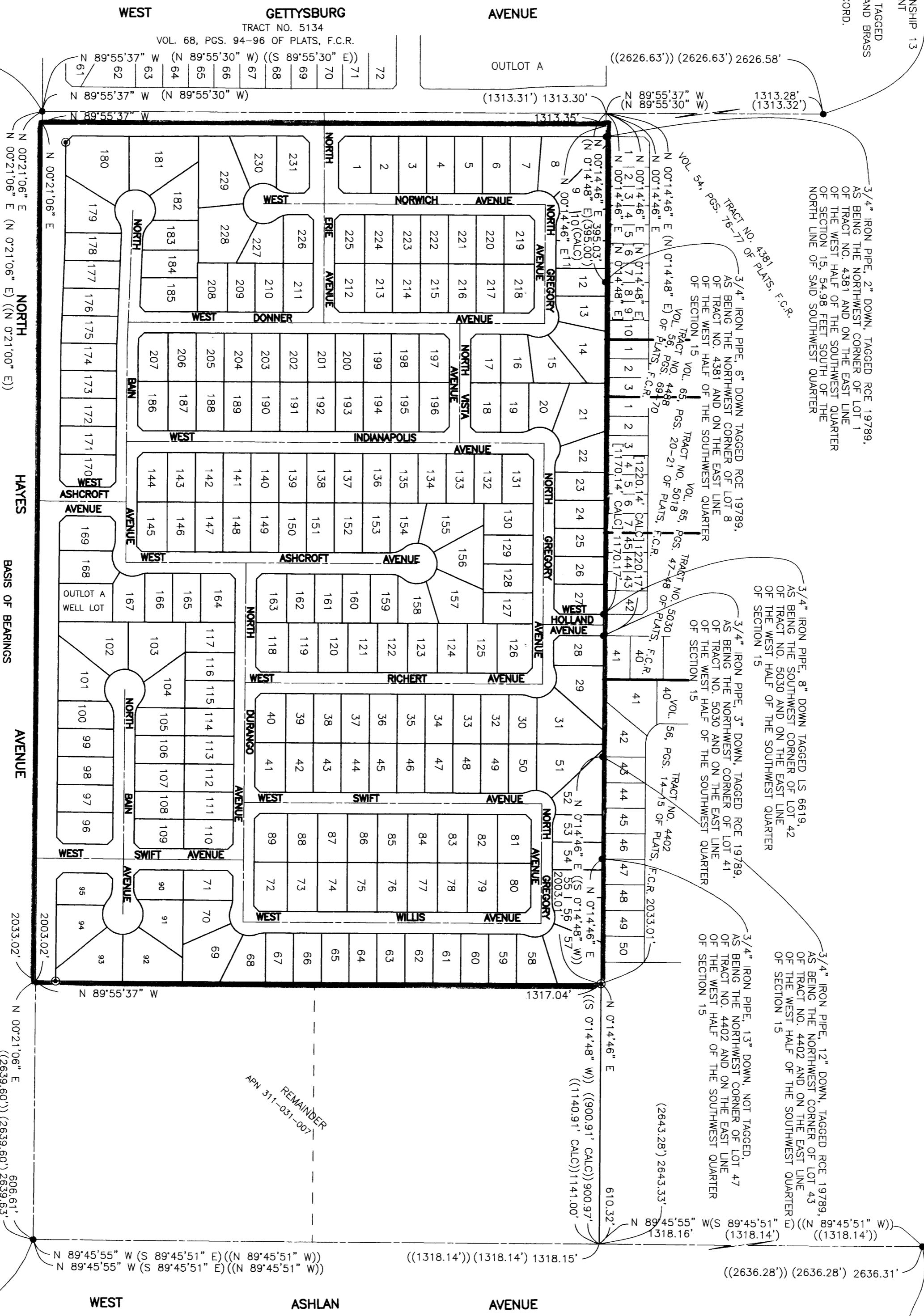
THE WEST LINE OF THE SOUTHWEST QUARTER OF SECTION 15, TOWNSHIP 13 SOUTH, RANGE 19 EAST, MOUNT DIABLO BASE AND MERIDIAN TAKEN AS BEARING N 00°21'06" E AS PER TRACT NO. 4381, RECORDED IN VOLUME 54, PAGES 76-77 OF PLATS, FRESNO COUNTY RECORDS.

THE SOUTH 1/4 CORNER OF SECTION 15, TOWNSHIP 13 SOUTH, RANGE 19 EAST, MOUNT DIABLO BASE AND MERIDIAN LOCATION OF CORNER FALLS ON MANHOLE COVER, 2'-2" SWING THE NAILS AND BRASS TAGS TAGGED R.C.E. 19789, CONFIRMED WITH TIES ON RECORD. C.R. 05602

LEGEND:

- MONUMENT FOUND AND ACCEPTED AS NOTED
- SET 3/4" IRON PIPE, 30" LONG, 4" UP IN 6" DIAMETER x 30" P.C.C. MONUMENT, DOWN 6" BELOW GROUND, TAGGED R.C.E. 26996
- F.C.R.: FRESNO COUNTY RECORDS
- () RECORD DATA AS PER TRACT NO. 4381, RECORDED IN VOLUME 54, PAGES 76-77 OF PLATS, F.C.R.
- [] RECORD DATA AS PER TRACT NO. 5030, RECORDED IN VOLUME 65, PAGES 46-47 OF PLATS, F.C.R.
- (()) RECORD DATA AS PER TRACT NO. 4402, RECORDED IN VOLUME 56, PAGES 14-15 OF PLATS, F.C.R.
- BLUE BORDER INDICATES THE LIMITS OF THIS SUBDIVISION

FOUND SCOTT MCKAY MONUMENT 10" DOWN, AS BEING THE SOUTHWEST CORNER OF SECTION 15, TOWNSHIP 13 SOUTH, RANGE 19 EAST, MOUNT DIABLO BASE AND MERIDIAN, CONFIRMED WITH TIES ON RECORD. C.R. 02935



THE CENTER QUARTER CORNER OF SECTION 15, TOWNSHIP 13 SOUTH, RANGE 19 EAST, MOUNT DIABLO BASE AND MERIDIAN, 3/4" IRON PIPE, FLUSH, NOT TAGGED AND 2'-2" SWING THE NAILS AND BRASS TAGS TAGGED R.C.E. 19789 CONFIRMED WITH TIES ON RECORD. C.R. 05488

3/4" IRON PIPE, 2" DOWN, TAGGED R.C.E. 19789, AS BEING THE NORTHWEST CORNER OF LOT 1 OF TRACT NO. 4381 AND ON THE EAST LINE OF THE WEST HALF OF THE SOUTHWEST QUARTER OF SECTION 15, 54.98 FEET SOUTH OF THE NORTH LINE OF SAID SOUTHWEST QUARTER

3/4" IRON PIPE, 8" DOWN TAGGED L.S. 6619, AS BEING THE SOUTHWEST CORNER OF LOT 42 OF TRACT NO. 5030 AND ON THE EAST LINE OF THE WEST HALF OF THE SOUTHWEST QUARTER OF SECTION 15

3/4" IRON PIPE, 12" DOWN, TAGGED R.C.E. 19789, AS BEING THE NORTHWEST CORNER OF LOT 47 OF TRACT NO. 4402 AND ON THE EAST LINE OF THE WEST HALF OF THE SOUTHWEST QUARTER OF SECTION 15

THE WEST QUARTER CORNER OF SECTION 15, TOWNSHIP 13 SOUTH, RANGE 19 EAST, MOUNT DIABLO BASE AND MERIDIAN, LOCATION OF CORNER FALLS ON MANHOLE COVER, 2'-2" SWING THE NAILS AND BRASS TAGS TAGGED L.S. 6619, CONFIRMED WITH TIES ON RECORD. C.R. 03011

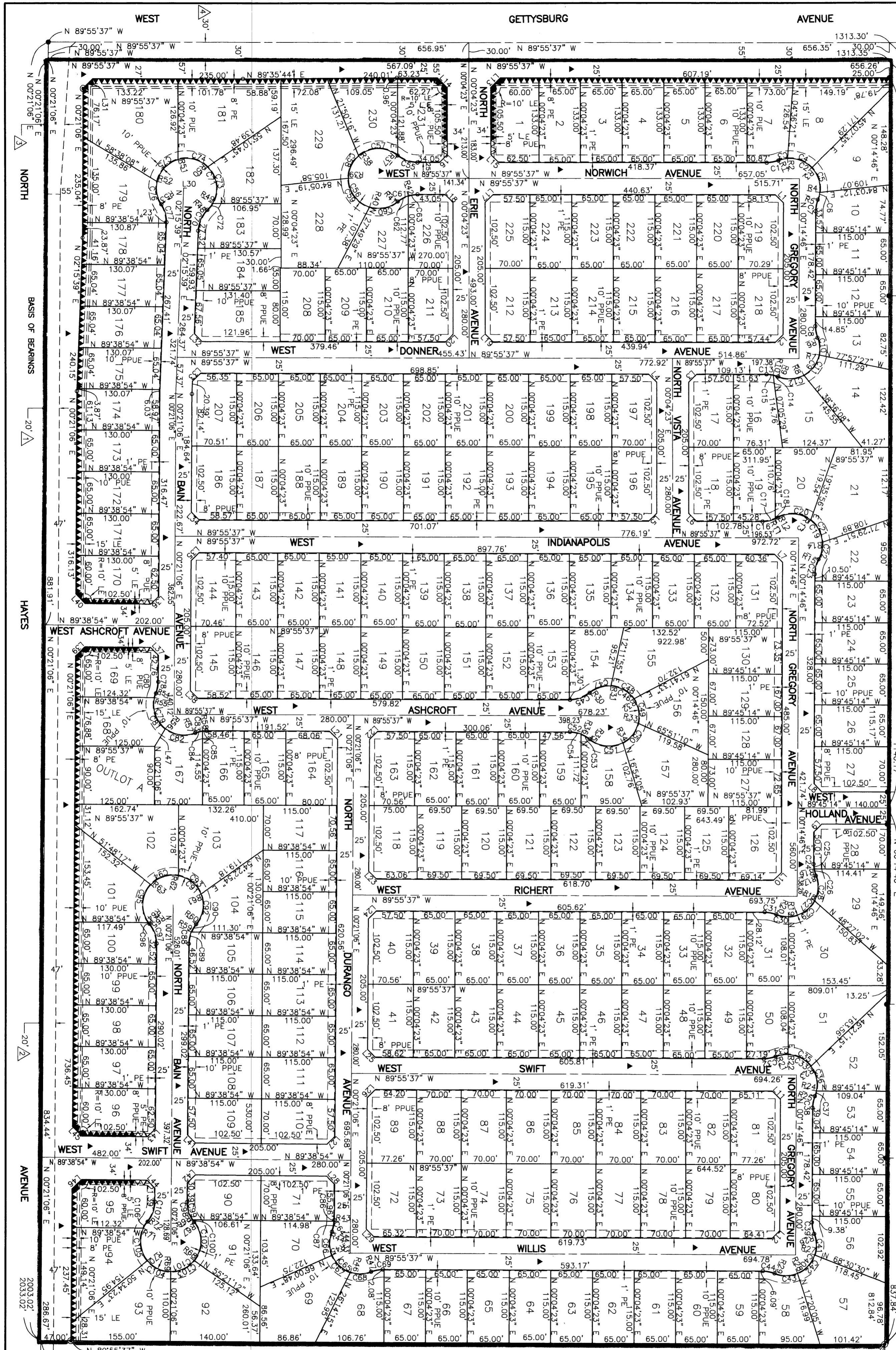
SCALE: 1" = 200'

TRACT NO. 5400

BEING A MERGER AND RESUBDIVISION OF A PORTION OF THE WEST HALF OF THE SOUTH WEST QUARTER OF SECTION 15, TOWNSHIP 13 SOUTH, RANGE 19 EAST, MOUNT DIABLO BASE AND MERIDIAN IN THE CITY OF FRESNO, COUNTY OF FRESNO, STATE OF CALIFORNIA SURVEYED AND PLATTED IN FEBRUARY 2006, BY GARY G. GIANNETTA SHEET THREE OF FOUR SHEETS

BASIS OF BEARINGS
 THE WEST LINE OF THE SOUTH WEST QUARTER OF SECTION 15, TOWNSHIP 13 SOUTH, RANGE 19 EAST, MOUNT DIABLO BASE AND MERIDIAN, TAKEN AS BEARING N 00°21'06" E AS PER TRACT NO. 4381, RECORDED IN VOLUME 54, PAGES 76-77 OF PLATS, FRESNO COUNTY RECORDS.

SCALE: 1" = 100'



LEGEND:

- MONUMENT FOUND AND ACCEPTED (SEE SHI. 2 FOR DESCRIPTION)
- SET 3/4" IRON PIPE, 30" LONG, 6" DOWN BELOW GROUND, TAGGED R.C.E. 28996
- ⊙ SET 3/4" IRON PIPE, 30" LONG, 4" UP IN 6" DIAMETER X 30" P.C.C. MONUMENT, DOWN 6" BELOW GROUND TAGGED R.C.E. 28996
- ▲ NOW OFFERED FOR DEDICATION FOR PUBLIC STREET PURPOSES
- ▲▲▲ INDICATES RELINQUISHMENT OF DIRECT ACCESS RIGHTS
- ▲▲▲▲ INDICATES RELINQUISHMENT OF VEHICULAR ACCESS RIGHTS
- ▲▲▲▲▲ PUBLIC UTILITY EASEMENT NOW OFFERED FOR DEDICATION FOR PUBLIC USE
- ▲▲▲▲▲ PUE PLANTING AND PUBLIC UTILITY EASEMENT NOW OFFERED FOR DEDICATION FOR PUBLIC USE
- ▲▲▲▲▲ LE LANDSCAPE EASEMENT NOW OFFERED FOR DEDICATION FOR PUBLIC USE
- ▲▲▲▲▲ PE PEDESTRIAN EASEMENT NOW OFFERED FOR DEDICATION FOR PUBLIC USE
- F.C.R. FRESNO COUNTY RECORDS
- BLUE BORDER INDICATES THE LIMITS OF THIS SUBDIVISION
- ▲ PREVIOUSLY DEEDED FOR ROAD PURPOSES DECEMBER 8, 1924 AS INSTRUMENT NO. 32294, BOOK 507, PAGE 181, F.C.R.
- ▲ PREVIOUSLY DEEDED FOR ROAD PURPOSES DECEMBER 8, 1924 AS INSTRUMENT NO. 32224, BOOK 508, PAGE 56, F.C.R.
- ▲ PREVIOUSLY DEEDED FOR EASEMENT AND PUBLIC STREET PURPOSES NOVEMBER 14, 2005, AS INSTRUMENT NO. 20050268555, F.C.R.
- ▲ PREVIOUSLY DEEDED FOR PUBLIC STREET PURPOSES RECORDED AUGUST 28, 2003, AS DOCUMENT NO. 2003-0204910, F.C.R.

NOTE:

1. SET 3/4" IRON PIPE, 6" DOWN, TAGGED R.C.E. 28996 AT ALL LOT CORNERS
2. OUTLOT A TO BE DEEDED TO THE CITY OF FRESNO FOR WELL LOT PURPOSES

REMAINDER