



Prepared on Mon Oct 22 14:46:47 2018

Street Names, Addresses and (Lot Numbers) for T5394



FINAL MAP OF TRACT MAP NO. 5394

A PLANNED UNIT DEVELOPMENT
IN THE CITY OF FRESNO, FRESNO COUNTY, CALIFORNIA
SURVEYED AND PLATTED IN MAY 2004

BY **D** HARBISON INTERNATIONAL INC.,
ENGINEERS - SURVEYORS - PLANNERS
2755 E. SHAW AVE., SUITE 101, FRESNO, CA 93710
PHONE: (559) 294-7485 FAX: (559) 294-7481
CONSISTING OF TWO SHEETS
SHEET 2 OF 2

LINE	LENGTH	BEARING
L1	30.31	N27°31'33"E
L2	14.42	S47°56'07"W
L3	7.10	S44°45'51"E
L4	15.38	S89°58'58"W
L5	10.67	N00°01'02"E
L6	14.28	N48°00'38"E
L7	27.10	N89°58'58"W
L8	2.00	N00°06'26"W
L9	7.10	S44°47'55"W
L10	14.17	S44°50'25"E
L11	21.70	N84°39'51"E
L12	NDT	USED
L13	2.56	S41°23'22"E
L14	28.03	N00°06'26"W
L15	4.60	N89°25'29"E
L16	9.86	S43°38'44"E
L17	7.20	N00°01'15"W
L18	6.80	N89°25'29"E
L19	[30.00]	[N00°00'00"W]
	.30.03	N00°06'26"W

BASIS OF BEARING:

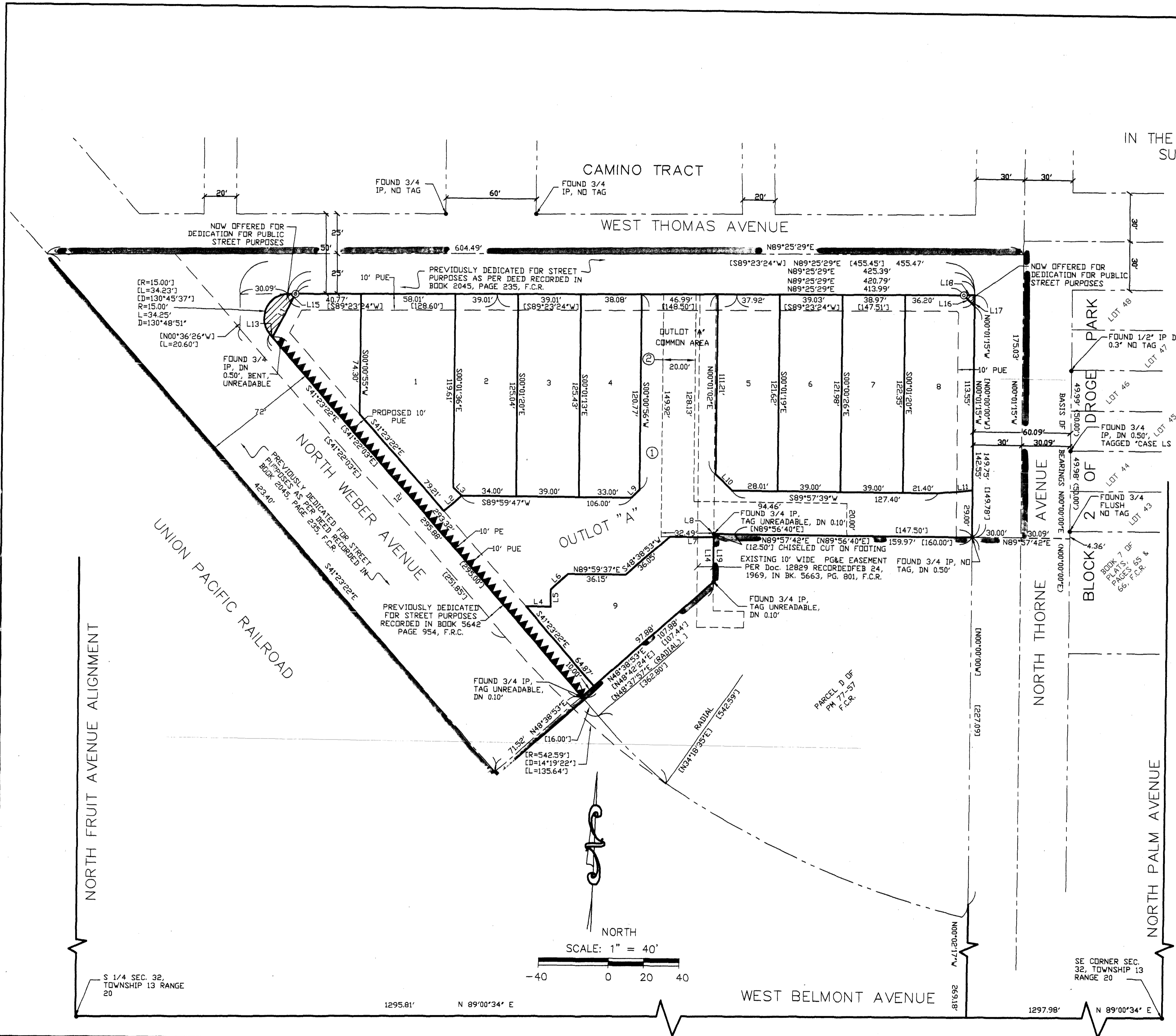
THE WEST LINE OF LOTS 45 AND 46 OF DRODGE PARK BLOCK 2 RECORDED IN BOOK 7 OF PLATS, PAGES 65 & 66, F.C.R., AS SHOWN ON MAP, TO BE TAKEN AS NORTH

NOTE:

- SET 3/4"x30" I.P. DN. 6" TAGGED "PLS 7507" AT ALL LOT CORNERS UNLESS OTHERWISE NOTED.
- ① OUTLOT "A" FOR PRIVATE ACCESS, COMMON AREA, LANDSCAPING AND BUFFER THORN TO WEBER AVENUES
- ② PRIVATE SEWER EASEMENT FOR THE BENEFIT OF PARCEL D OF PARCEL MAP 77-57, BOOK 32, PAGE 74, FRESNO COUNTY RECORDS

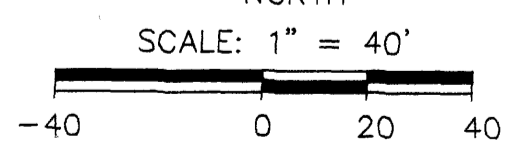
LEGEND

- FOUND 3/4' IRON PIPE UNLESS OTHERWISE NOTED
- SET MONUMENT PER FMC 12-1015
- ⊙ SET DURABLE MONUMENT PER FMC 12-1015 - SET 3/4" x 30" I.P. FLUSH WITH SURFACE, IN CONCRETE; TAGGED L.S. 7505
- DN DOWN
- FD FOUND
- I.P. IRON PIPE
- C.R. CORNER RECORD
- F.C.R. FRESNO COUNTY RECORDS
- P.U.E. PUBLIC UTILITY EASEMENT NOW OFFERED FOR DEDICATION
- P.E. PEDESTRIAN EASEMENT NOW OFFERED FOR PUBLIC USE
- F.C.B.C.M. FRESNO COUNTY BRASS CAP MONUMENT
- L.E. LANDSCAPE EASEMENT
- [] DATA PER PARCEL MAP 77-57 RECORDED IN BK 32, PG. 74
- < > RECORD DATA PER DRODGE PARK RECORDED IN BOOK 7 OF PLATS, PAGES 65 & 66, F.C.R.
- ▲▲▲ INDICATES RELINQUISHMENT OF DIRECT ACCESS RIGHTS
- ▬ BLUE BORDER INDICATES LIMITS OF SUBDIVISION
- ▨ AREA NOW OFFERED FOR DEDICATION



S 1/4 SEC. 32,
TOWNSHIP 13 RANGE
20

1295.81' N 89°00'34" E



WEST BELMONT AVENUE

1297.98' N 89°00'34" E

SE CORNER SEC.
32, TOWNSHIP 13
RANGE 20