



Prepared on Mon Oct 22 14:47:07 2018

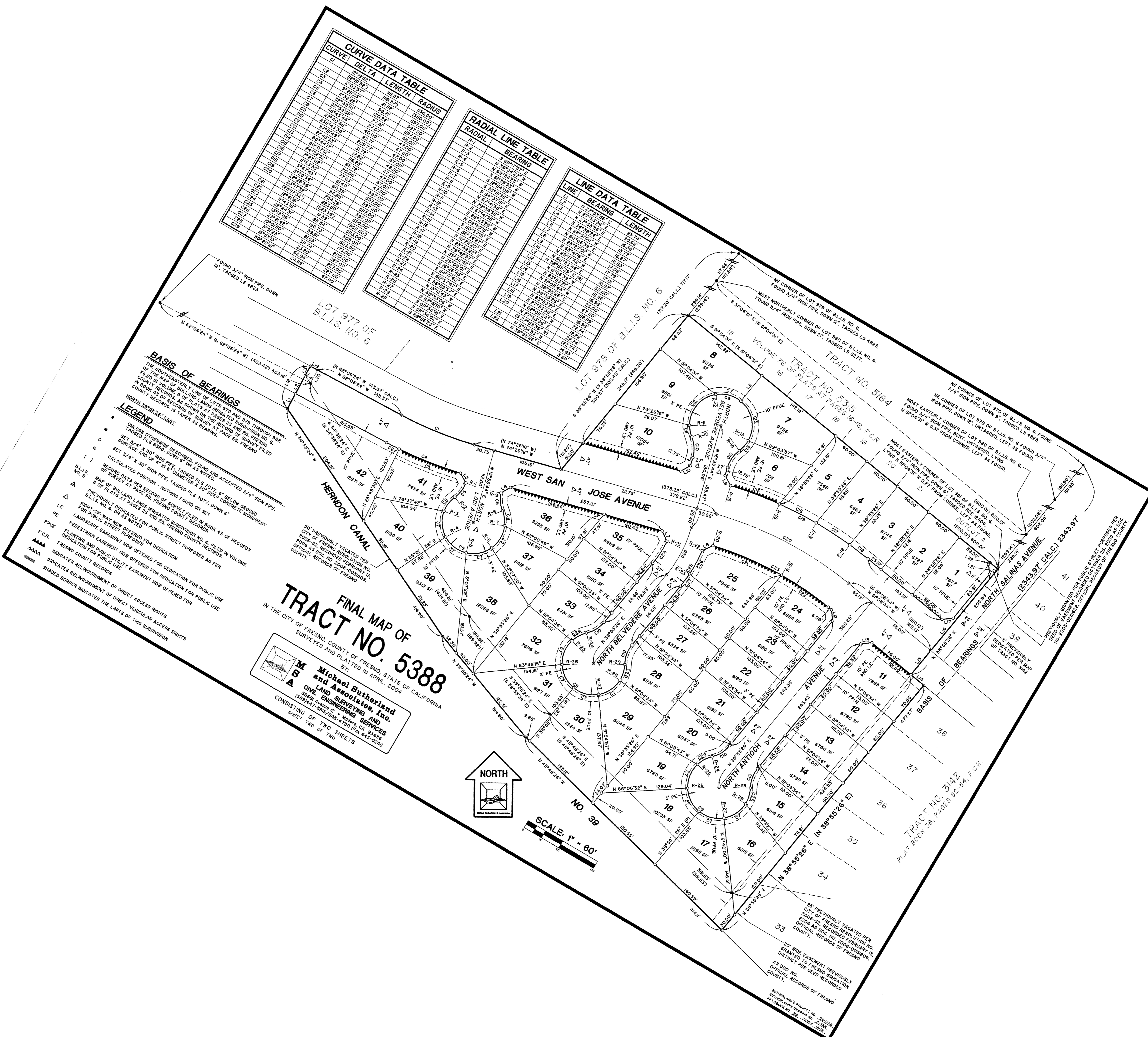
Street Names, Addresses and (Lot Numbers) for T5388



CURVE	DELTA	LENGTH	RADIUS
C1	90°00'00"	100.00	100.00
C2	90°00'00"	100.00	100.00
C3	90°00'00"	100.00	100.00
C4	90°00'00"	100.00	100.00
C5	90°00'00"	100.00	100.00
C6	90°00'00"	100.00	100.00
C7	90°00'00"	100.00	100.00
C8	90°00'00"	100.00	100.00
C9	90°00'00"	100.00	100.00
C10	90°00'00"	100.00	100.00
C11	90°00'00"	100.00	100.00
C12	90°00'00"	100.00	100.00
C13	90°00'00"	100.00	100.00
C14	90°00'00"	100.00	100.00
C15	90°00'00"	100.00	100.00
C16	90°00'00"	100.00	100.00
C17	90°00'00"	100.00	100.00
C18	90°00'00"	100.00	100.00
C19	90°00'00"	100.00	100.00
C20	90°00'00"	100.00	100.00
C21	90°00'00"	100.00	100.00
C22	90°00'00"	100.00	100.00
C23	90°00'00"	100.00	100.00
C24	90°00'00"	100.00	100.00
C25	90°00'00"	100.00	100.00
C26	90°00'00"	100.00	100.00
C27	90°00'00"	100.00	100.00
C28	90°00'00"	100.00	100.00
C29	90°00'00"	100.00	100.00
C30	90°00'00"	100.00	100.00
C31	90°00'00"	100.00	100.00
C32	90°00'00"	100.00	100.00
C33	90°00'00"	100.00	100.00
C34	90°00'00"	100.00	100.00
C35	90°00'00"	100.00	100.00
C36	90°00'00"	100.00	100.00
C37	90°00'00"	100.00	100.00
C38	90°00'00"	100.00	100.00
C39	90°00'00"	100.00	100.00
C40	90°00'00"	100.00	100.00
C41	90°00'00"	100.00	100.00
C42	90°00'00"	100.00	100.00
C43	90°00'00"	100.00	100.00
C44	90°00'00"	100.00	100.00
C45	90°00'00"	100.00	100.00
C46	90°00'00"	100.00	100.00
C47	90°00'00"	100.00	100.00
C48	90°00'00"	100.00	100.00
C49	90°00'00"	100.00	100.00
C50	90°00'00"	100.00	100.00

RADIAL	BEARING
R1	N 89°59'59" W
R2	N 89°59'59" W
R3	N 89°59'59" W
R4	N 89°59'59" W
R5	N 89°59'59" W
R6	N 89°59'59" W
R7	N 89°59'59" W
R8	N 89°59'59" W
R9	N 89°59'59" W
R10	N 89°59'59" W
R11	N 89°59'59" W
R12	N 89°59'59" W
R13	N 89°59'59" W
R14	N 89°59'59" W
R15	N 89°59'59" W
R16	N 89°59'59" W
R17	N 89°59'59" W
R18	N 89°59'59" W
R19	N 89°59'59" W
R20	N 89°59'59" W
R21	N 89°59'59" W
R22	N 89°59'59" W
R23	N 89°59'59" W
R24	N 89°59'59" W
R25	N 89°59'59" W
R26	N 89°59'59" W
R27	N 89°59'59" W
R28	N 89°59'59" W
R29	N 89°59'59" W
R30	N 89°59'59" W
R31	N 89°59'59" W
R32	N 89°59'59" W
R33	N 89°59'59" W
R34	N 89°59'59" W
R35	N 89°59'59" W
R36	N 89°59'59" W
R37	N 89°59'59" W
R38	N 89°59'59" W
R39	N 89°59'59" W
R40	N 89°59'59" W
R41	N 89°59'59" W
R42	N 89°59'59" W
R43	N 89°59'59" W
R44	N 89°59'59" W
R45	N 89°59'59" W
R46	N 89°59'59" W
R47	N 89°59'59" W
R48	N 89°59'59" W
R49	N 89°59'59" W
R50	N 89°59'59" W

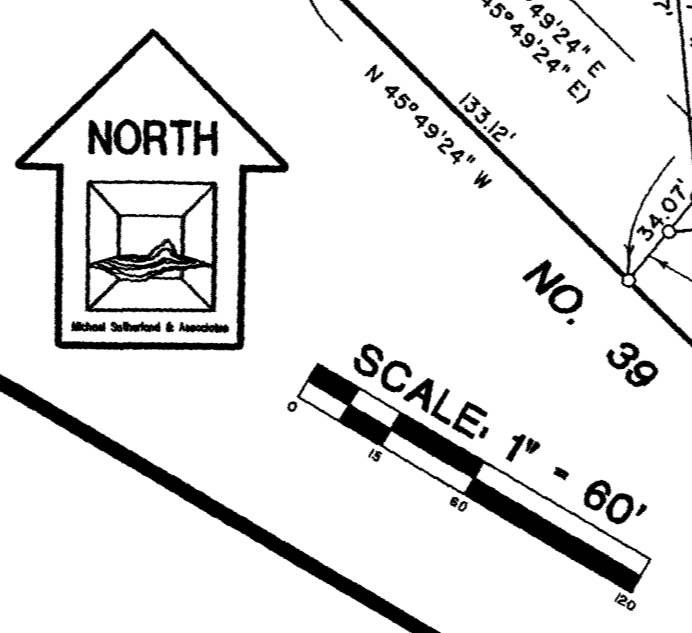
LINE	BEARING	LENGTH
L1	N 89°59'59" W	100.00
L2	N 89°59'59" W	100.00
L3	N 89°59'59" W	100.00
L4	N 89°59'59" W	100.00
L5	N 89°59'59" W	100.00
L6	N 89°59'59" W	100.00
L7	N 89°59'59" W	100.00
L8	N 89°59'59" W	100.00
L9	N 89°59'59" W	100.00
L10	N 89°59'59" W	100.00
L11	N 89°59'59" W	100.00
L12	N 89°59'59" W	100.00
L13	N 89°59'59" W	100.00
L14	N 89°59'59" W	100.00
L15	N 89°59'59" W	100.00
L16	N 89°59'59" W	100.00
L17	N 89°59'59" W	100.00
L18	N 89°59'59" W	100.00
L19	N 89°59'59" W	100.00
L20	N 89°59'59" W	100.00
L21	N 89°59'59" W	100.00
L22	N 89°59'59" W	100.00
L23	N 89°59'59" W	100.00
L24	N 89°59'59" W	100.00
L25	N 89°59'59" W	100.00
L26	N 89°59'59" W	100.00
L27	N 89°59'59" W	100.00
L28	N 89°59'59" W	100.00
L29	N 89°59'59" W	100.00
L30	N 89°59'59" W	100.00
L31	N 89°59'59" W	100.00
L32	N 89°59'59" W	100.00
L33	N 89°59'59" W	100.00
L34	N 89°59'59" W	100.00
L35	N 89°59'59" W	100.00
L36	N 89°59'59" W	100.00
L37	N 89°59'59" W	100.00
L38	N 89°59'59" W	100.00
L39	N 89°59'59" W	100.00
L40	N 89°59'59" W	100.00
L41	N 89°59'59" W	100.00
L42	N 89°59'59" W	100.00
L43	N 89°59'59" W	100.00
L44	N 89°59'59" W	100.00
L45	N 89°59'59" W	100.00
L46	N 89°59'59" W	100.00
L47	N 89°59'59" W	100.00
L48	N 89°59'59" W	100.00
L49	N 89°59'59" W	100.00
L50	N 89°59'59" W	100.00



BASIS OF BEARINGS
 THE SOUTHEASTERN CORNER OF LOT 370 AND 371 THROUGH 388 OF THE MAP OF BULL AND LANDS HEREIN TO SURVEY WITH NO. 4337 IN VOLUME 4 OF PLATS AT PAGE 16-18, F.C.R. COUNTY RECORDS OF FRESNO COUNTY RECORDS IS TAKEN AS BLAND.

LEGEND
 UNLESS OTHERWISE DESCRIBED FOUND AND TAGGED AS NOTED
 SET 3/4" X 3/4" IRON PIPE, TAPPED PLS. 7077, 1" BELOW GROUND SURFACE AND 1/4" N.E. DIAMETER X 30" DEEP CONCRETE MONUMENT
 SET 3/4" X 30" IRON PIPE, TAPPED PLS. 7077, 1" BELOW GROUND SURFACE AND 1/4" N.E. DIAMETER X 30" DEEP CONCRETE MONUMENT
 CALCULATED POSITION - NOTHING FOUND ON SET
 RECORDED DATA PER RECORD OF SURVEY FILED IN BOOK 43 OF RECORDS OF PLATS AT PAGE 16-18, F.C.R. COUNTY RECORDS OF FRESNO COUNTY RECORDS
 PREVIOUSLY DEDICATED FOR PUBLIC STREET PURPOSES AS PER PLANS AND PUBLIC UTILITY EASEMENT NOW OFFERED FOR DEDICATION FOR PUBLIC USE
 FEDERAL EASEMENT NOW OFFERED FOR DEDICATION FOR PUBLIC USE
 LANDSCAPE EASEMENT NOW OFFERED FOR DEDICATION FOR PUBLIC USE
 F.C.R. FRESNO COUNTY RECORDS
 INDICATES RELINQUISHMENT OF DIRECT ACCESS RIGHTS
 SHADED BORDER INDICATES THE LIMITS OF THIS SUBDIVISION

FINAL MAP OF
TRACT NO. 5388
 IN THE CITY OF FRESNO, COUNTY OF FRESNO, STATE OF CALIFORNIA
 SURVEYED AND PLATTED IN APRIL, 2004
M. S. A. Michael Butterland and Associates, Inc.
 CIVIL ENGINEERING AND SURVEYING SERVICES
 3409 FARMERS AVENUE, SUITE 100, FRESNO, CA 93726
 CONSISTING OF TWO SHEETS
 SHEET 186 OF 190



NO. 39
 PREVIOUSLY VACATED PER CITY OF FRESNO RESOLUTION NO. 2004-34 RECORDS OF FRESNO COUNTY RECORDS OF FRESNO COUNTY RECORDS
 NO. 40
 PREVIOUSLY VACATED PER CITY OF FRESNO RESOLUTION NO. 2004-34 RECORDS OF FRESNO COUNTY RECORDS OF FRESNO COUNTY RECORDS
 NO. 41
 PREVIOUSLY VACATED PER CITY OF FRESNO RESOLUTION NO. 2004-34 RECORDS OF FRESNO COUNTY RECORDS OF FRESNO COUNTY RECORDS