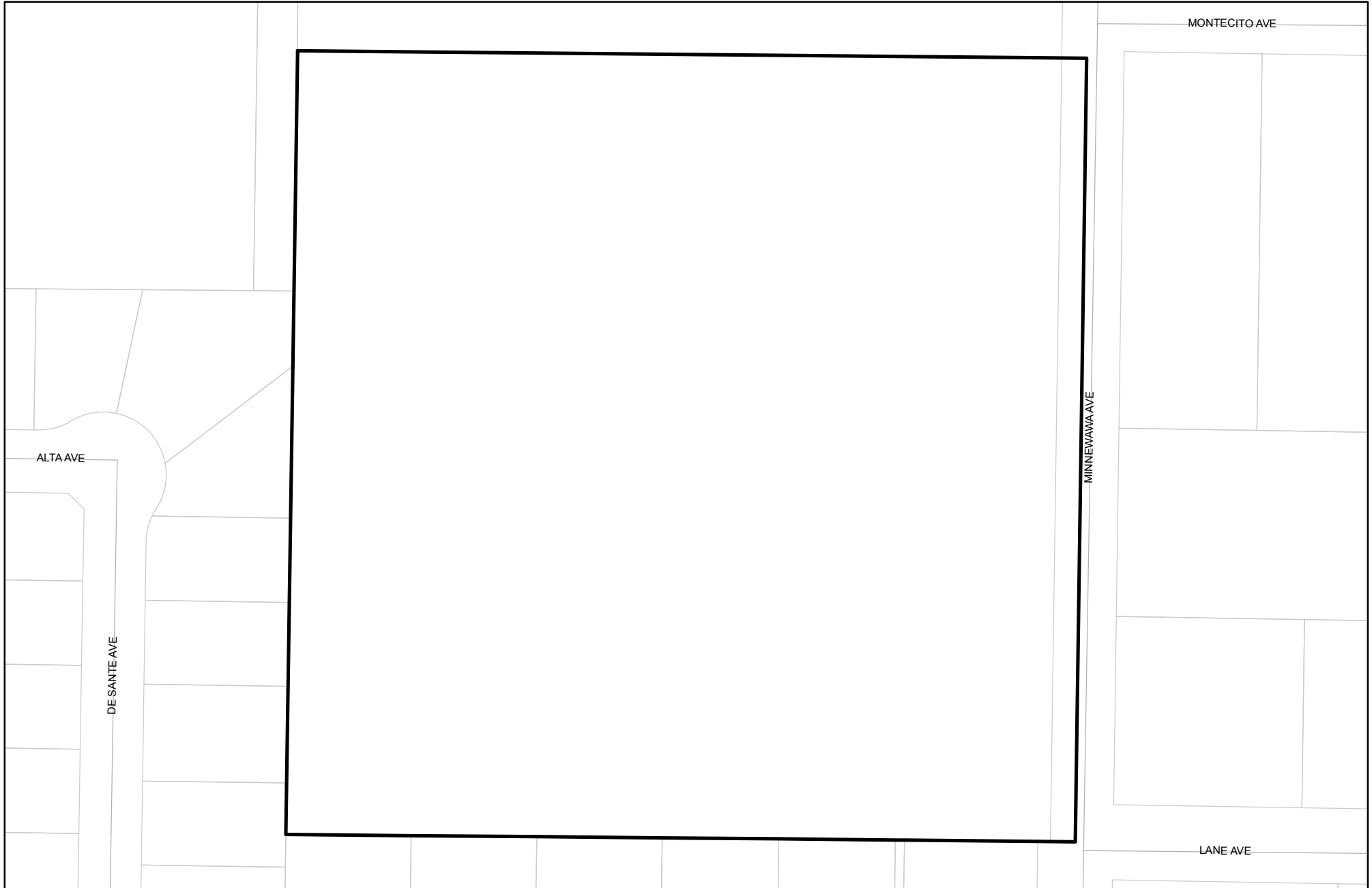




Prepared on Mon Oct 22 14:48:13 2018

Street Names, Addresses and (Lot Numbers) for T5387



TRACT NO. 5387

A PLANNED UNIT DEVELOPMENT
 IN THE CITY OF FRESNO, COUNTY OF FRESNO, STATE OF CALIFORNIA
 SURVEYED AND PLATTED IN OCTOBER, 2005 BY GARY G. GIANNETTA
 CONSISTING OF TWO SHEETS
 SHEET TWO OF TWO SHEETS



SCALE: 1" = 100'

RADIAL	DIRECTION
R1	N 11°05'17" E
R2	N 16°33'17" E
R3	S 05°05'36" W
R4	N 11°20'20" E
R5	S 04°35'33" W
R6	S 89°08'24" W
R7	S 12°28'05" E
R8	S 17°18'11" E
R9	N 05°00'39" W
R10	S 11°11'01" E
R11	S 05°32'35" E

LINE	DIRECTION	DISTANCE
L1	N 89°37'33" E	143.93'
L2	N 89°37'33" E	113.93'
L3	S 89°37'33" W	30.00'
L4	N 89°37'33" E	144.17'
L5	N 89°37'33" E	114.17'
L6	N 89°37'33" E	30.00'

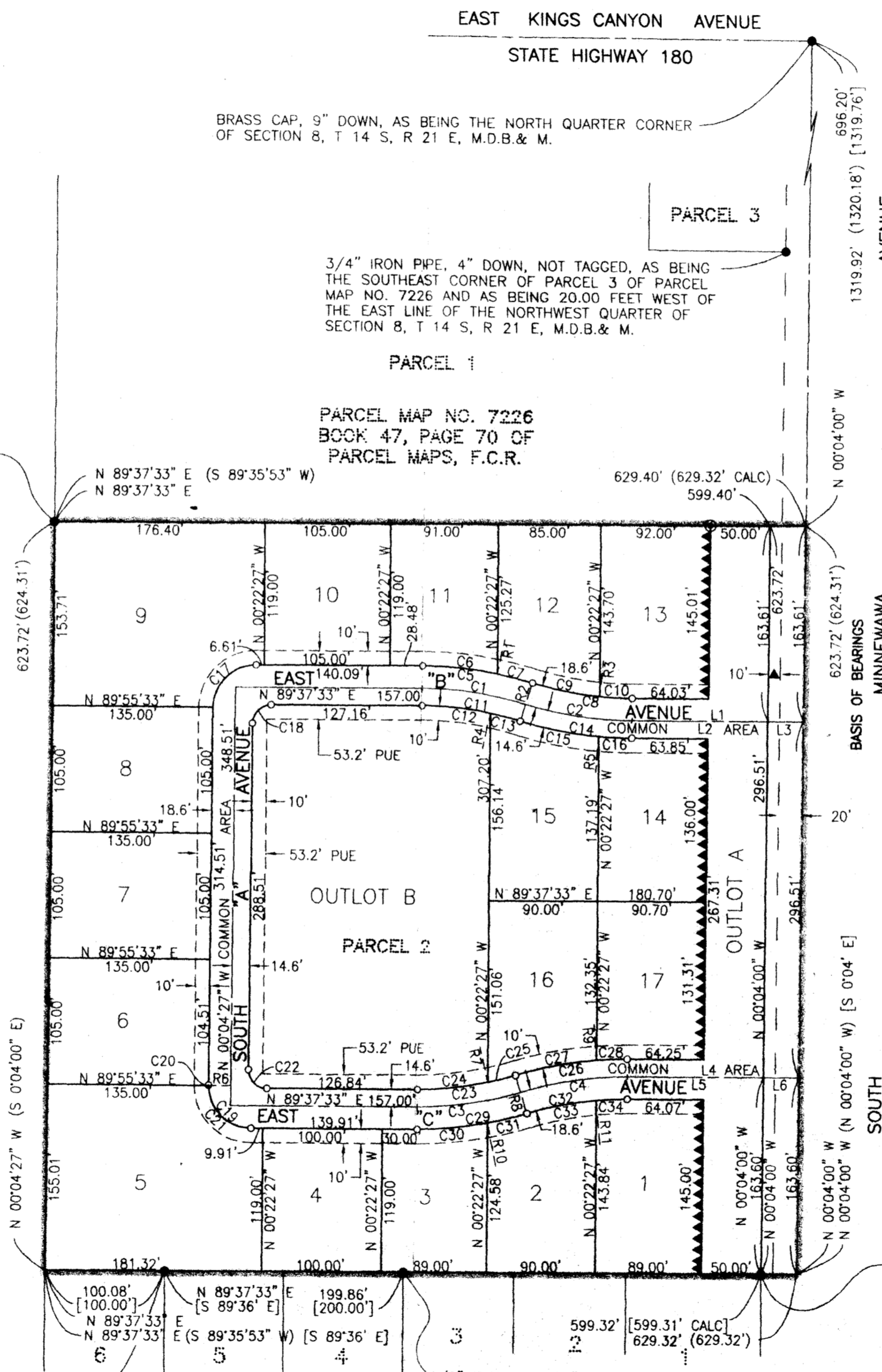
3/4" IRON PIPE, 12" DOWN, TAGGED RCE 10782,
 AS BEING THE NORTHWEST CORNER OF PARCEL 2
 OF PARCEL MAP NO. 7226

CURVE	RADIUS	LENGTH	TANGENT	DELTA
C1	296.00'	87.46'	44.05'	16°55'44"
C2	304.00'	89.82'	45.24'	16°55'44"
C3	296.00'	87.46'	44.05'	16°55'44"
C4	304.00'	89.82'	45.24'	16°55'44"
C5	314.60'	92.95'	46.82'	16°55'44"
C6	314.60'	62.94'	31.57'	11°27'44"
C7	314.60'	30.02'	15.02'	05°28'00"
C8	285.40'	84.33'	42.47'	16°55'44"
C9	285.40'	57.09'	28.64'	11°27'41"
C10	285.40'	27.23'	13.63'	05°28'03"
C11	281.40'	83.14'	41.88'	16°55'44"
C12	281.40'	57.53'	28.86'	11°42'47"
C13	281.40'	25.62'	12.82'	05°12'57"
C14	318.60'	94.14'	47.41'	16°55'44"
C15	318.60'	66.52'	33.36'	11°57'44"
C16	318.60'	27.62'	13.82'	04°58'00"
C17	35.60'	55.73'	35.41'	89°42'00"
C18	15.40'	24.11'	15.32'	89°42'00"
C19	35.60'	56.11'	35.79'	90°18'00"
C20	35.60'	0.49'	0.24'	00°47'09"
C21	35.60'	55.62'	35.30'	89°30'51"
C22	15.40'	24.27'	15.48'	90°18'00"
C23	281.40'	83.14'	41.88'	16°55'44"
C24	281.40'	59.40'	29.81'	12°05'38"
C25	281.40'	23.75'	11.88'	04°50'06"
C26	318.60'	94.14'	47.41'	16°55'44"
C27	318.60'	68.35'	34.31'	12°17'32"
C28	318.60'	25.78'	12.90'	04°38'12"
C29	314.60'	92.95'	46.82'	16°55'44"
C30	314.60'	59.35'	29.76'	10°48'34"
C31	314.60'	33.60'	16.82'	06°07'10"
C32	285.40'	84.33'	42.47'	16°55'44"
C33	285.40'	58.58'	29.39'	11°45'36"
C34	285.40'	25.75'	12.88'	05°10'08"

1/2" IRON PIPE, 6" UP, NOT TAGGED, AS BEING THE
 NORTHEAST CORNER OF LOT 6 OF TRACT NO. 1532
 AND ON THE SOUTH LINE OF PARCEL 2 OF PARCEL
 MAP NO. 7226

TRACT NO. 1532
 VOLUME 18, PAGE 6 OF PLATS, F.C.R.

1/2" IRON PIPE, 7" DOWN, NOT TAGGED, AS BEING THE
 NORTHEAST CORNER OF LOT 4 OF TRACT NO. 1532
 AND ON THE SOUTH LINE OF PARCEL 2 OF PARCEL
 MAP NO. 7226



BASIS OF BEARINGS

THE EAST LINE OF THE NORTHWEST QUARTER OF SECTION 8,
 TOWNSHIP 14 SOUTH, RANGE 21 EAST, TAKEN AS BEARING
 NORTH 0°04'00" EAST AS PER PARCEL MAP NO. 7226,
 RECORDED IN BOOK 47, PAGE 70 OF PARCEL MAPS, FRESNO
 COUNTY RECORDS.

LEGEND:

- MONUMENT FOUND AND ACCEPTED AS NOTED
- SET 3/4" IRON PIPE, 30" LONG, 6" DOWN BELOW GROUND, TAGGED R.C.E. 26996
- ⊙ SET 3/4" IRON PIPE, 30" LONG, 4" UP IN 6" DIAMETER x 30" P.C.C. MONUMENT, DOWN 6" BELOW GROUND, TAGGED R.C.E. 26996
- ▲ NOW OFFERED FOR DEDICATION FOR PUBLIC STREET PURPOSES
- INDICATES RELINQUISHMENT OF DIRECT ACCESS RIGHTS
- () RECORD DATA AS PER PARCEL MAP NO. 7226, RECORDED IN BOOK 47, PAGE 70 OF PARCEL MAPS, F.C.R.
- [] RECORD DATA AS PER TRACT NO. 1532, WOODSIDE ESTATES, RECORDED IN VOLUME 18, PAGE 6 OF PLATS, F.C.R.
- F.C.R. FRESNO COUNTY RECORDS
- PUE PUBLIC UTILITY EASEMENT NOW OFFERED FOR DEDICATION FOR PUBLIC USE
- (CALC) CALCULATED FROM RECORD DATA
- (R) DENOTES RADIAL BEARING
- BLUE BORDER INDICATES THE LIMITS OF THIS SUBDIVISION

NOTE:

1. SET 3/4" IRON PIPE, 6" DOWN, TAGGED RCE 26996 AT ALL LOT CORNERS
2. OUTLOT A IS FOR COMMON AREA STREETS, INGRESS AND EGRESS, AND LANDSCAPING.
3. OUTLOT B IS FOR COMMON AREA IMPROVEMENTS AND OPEN SPACE