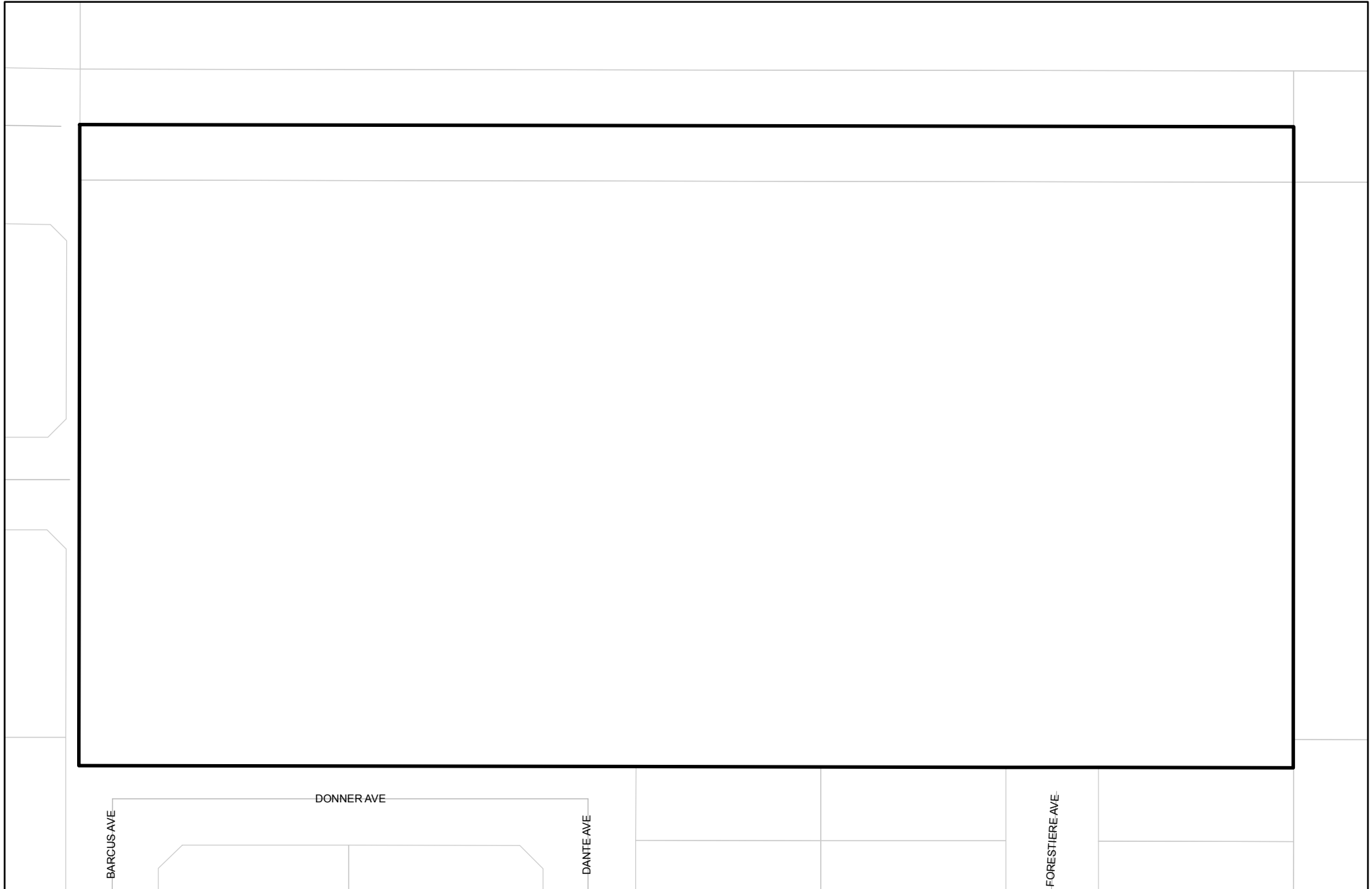





Prepared on Tue Apr 02 13:56:56 2013

Street Names, Addresses and (Lot Numbers) for T5379

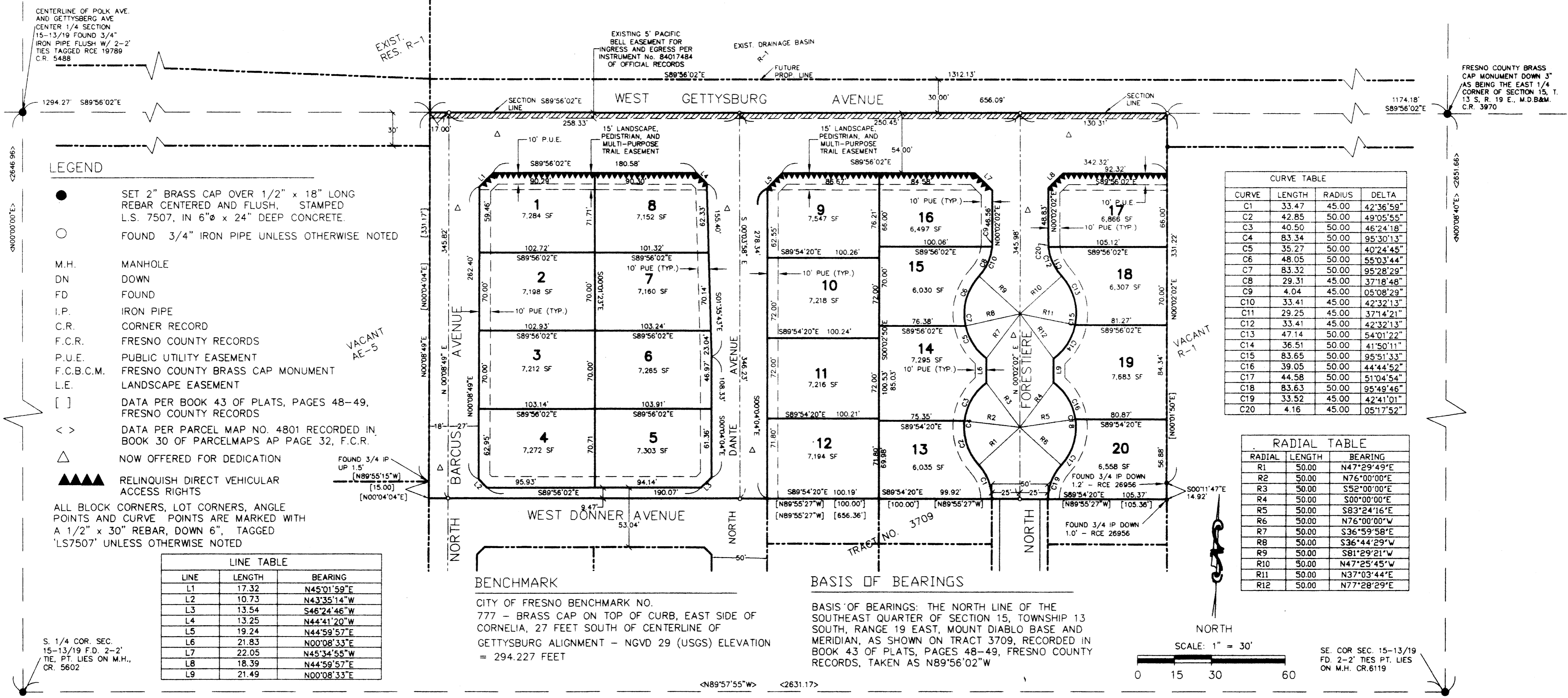


FINAL MAP OF TRACT NO. 5379

IN THE CITY OF FRESNO, FRESNO COUNTY, CALIFORNIA
SURVEYED AND PLATTED IN MAY 2004

BY  **HARBISON INTERNATIONAL INC.,**
ENGINEERS - SURVEYORS - PLANNERS
2755 E. SHAW AVE., SUITE 101, FRESNO, CA 93710
PHONE: (559) 294-7485 FAX: (559) 294-7481

CONSISTING OF TWO SHEETS
SHEET 2 OF 2



CENTERLINE OF POLK AVE. AND GETTYSBERG AVE
CENTER 1/4 SECTION
15-13/19 FOUND 3/4" IRON PIPE FLUSH W/ 2-2" TIES TAGGED RCE 19789 C.R. 5488

FRESNO COUNTY BRASS CAP MONUMENT DOWN 3" AS BEING THE EAST 1/4 CORNER OF SECTION 15, T. 13 S. R. 19 E., M.D.B&M. C.R. 3970

LEGEND

- SET 2" BRASS CAP OVER 1/2" x 18" LONG REBAR CENTERED AND FLUSH, STAMPED L.S. 7507, IN 6" x 24" DEEP CONCRETE.
 - FOUND 3/4" IRON PIPE UNLESS OTHERWISE NOTED
 - M.H. MANHOLE
 - DN DOWN
 - FD FOUND
 - I.P. IRON PIPE
 - C.R. CORNER RECORD
 - F.C.R. FRESNO COUNTY RECORDS
 - P.U.E. PUBLIC UTILITY EASEMENT
 - F.C.B.C.M. FRESNO COUNTY BRASS CAP MONUMENT
 - L.E. LANDSCAPE EASEMENT
 - [] DATA PER BOOK 43 OF PLATS, PAGES 48-49, FRESNO COUNTY RECORDS
 - < > DATA PER PARCEL MAP NO. 4801 RECORDED IN, BOOK 30 OF PARCELMAPS AP PAGE 32, F.C.R.
 - △ NOW OFFERED FOR DEDICATION
 - ▲▲▲ RELINQUISH DIRECT VEHICULAR ACCESS RIGHTS
- ALL BLOCK CORNERS, LOT CORNERS, ANGLE POINTS AND CURVE POINTS ARE MARKED WITH A 1/2" x 30" REBAR, DOWN 6", TAGGED 'LS7507' UNLESS OTHERWISE NOTED

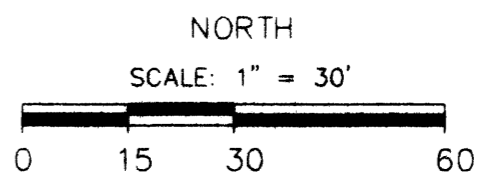
CURVE TABLE			
CURVE	LENGTH	RADIUS	DELTA
C1	33.47	45.00	42°36'59"
C2	42.85	50.00	49°05'55"
C3	40.50	50.00	46°24'18"
C4	83.34	50.00	95°30'13"
C5	35.27	50.00	40°24'45"
C6	48.05	50.00	55°03'44"
C7	83.32	50.00	95°28'29"
C8	29.31	45.00	37°18'48"
C9	4.04	45.00	05°08'29"
C10	33.41	45.00	42°32'13"
C11	29.25	45.00	37°14'21"
C12	33.41	45.00	42°32'13"
C13	47.14	50.00	54°01'22"
C14	36.51	50.00	41°50'11"
C15	83.65	50.00	95°51'33"
C16	39.05	50.00	44°44'52"
C17	44.58	50.00	51°04'54"
C18	83.63	50.00	95°49'46"
C19	33.52	45.00	42°41'01"
C20	4.16	45.00	05°17'52"

RADIAL TABLE		
RADIAL	LENGTH	BEARING
R1	50.00	N47°29'49"E
R2	50.00	N76°00'00"E
R3	50.00	S52°00'00"E
R4	50.00	S00°00'00"E
R5	50.00	S83°24'16"E
R6	50.00	N76°00'00"W
R7	50.00	S36°59'58"E
R8	50.00	S36°44'29"W
R9	50.00	S81°29'21"W
R10	50.00	N47°25'45"W
R11	50.00	N37°03'44"E
R12	50.00	N77°28'29"E

LINE TABLE		
LINE	LENGTH	BEARING
L1	17.32	N45°01'59"E
L2	10.73	N43°35'14"W
L3	13.54	S46°24'46"W
L4	13.25	N44°41'20"W
L5	19.24	N44°59'57"E
L6	21.83	N00°08'33"E
L7	22.05	N45°34'55"W
L8	18.39	N44°59'57"E
L9	21.49	N00°08'33"E

BENCHMARK
CITY OF FRESNO BENCHMARK NO. 777 - BRASS CAP ON TOP OF CURB, EAST SIDE OF CORNELIA, 27 FEET SOUTH OF CENTERLINE OF GETTYSBURG ALIGNMENT - NGVD 29 (USGS) ELEVATION = 294.227 FEET

BASIS OF BEARINGS
BASIS OF BEARINGS: THE NORTH LINE OF THE SOUTHEAST QUARTER OF SECTION 13 SOUTH, RANGE 19 EAST, MOUNT DIABLO BASE AND MERIDIAN, AS SHOWN ON TRACT 3709, RECORDED IN BOOK 43 OF PLATS, PAGES 48-49, FRESNO COUNTY RECORDS, TAKEN AS N89°56'02"W



S. 1/4 COR. SEC. 15-13/19 F.D. 2-2" TIE, PT. LIES ON M.H., CR. 5602

SE. COR SEC 15-13/19 F.D. 2-2" TIES PT. LIES ON M.H. CR.6119