



Prepared on Mon Oct 22 14:49:57 2018

Street Names, Addresses and (Lot Numbers) for T5376



FINAL MAP OF
TRACT NO. 5376
THE CLASSICS II AT SUNNYSIDE
 IN THE CITY OF FRESNO
 COUNTY OF FRESNO - STATE OF CALIFORNIA
 SURVEYED AND PLATTED IN JUNE 2005
 BY LARS ANDERSEN & ASSOCIATES, INC.
 CONSISTING OF THREE SHEETS SHEET 2 OF 3

List of Easements

- E1 An easement for right of way for Pole Line purposes granted to the San Joaquin Light and Power Corporation recorded May 29, 1918 as in Book 93 at Page 431 as Document No. 17906 of Official Records of Fresno County.
- E2 An easement for Public Utility purposes granted to the Pacific Gas and Electric Company recorded October 2, 1987 as Instrument No. 87121012 of Official Records of Fresno County.
- E3 An easement for Public Street purposes granted to the City of Fresno recorded May 3, 1994 as Instrument No. 94075890 of Official Records of Fresno County.
- E4 An easement for Storm Drainage Pipeline purposes granted to the FRESNO METROPOLITAN FLOOD CONTROL DISTRICT recorded March 26, 2004 as Instrument No. 2004-0066584 of Official Records of Fresno County.
- E5 An easement for Communication Facility purposes granted to the Pacific Bell and Telephone Company recorded April 1, 2004 as Instrument No. 2004-0070483 and a "Notice of Final Description" recorded July 20, 2004 as Instrument No. 2004-0157504 of Official Records of Fresno County.

Legend

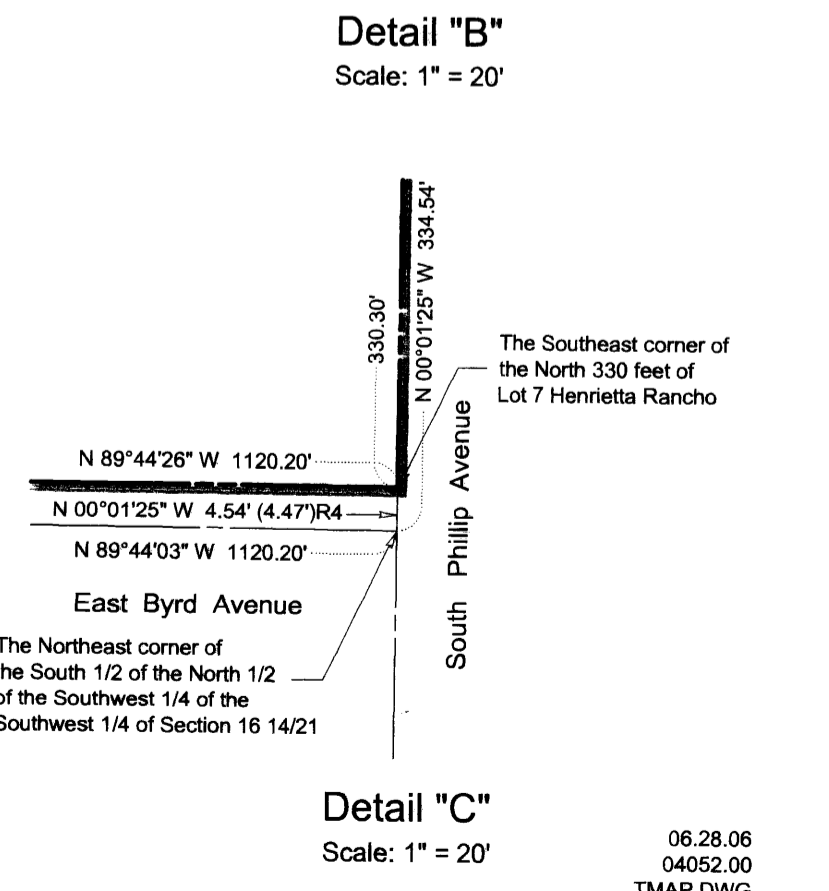
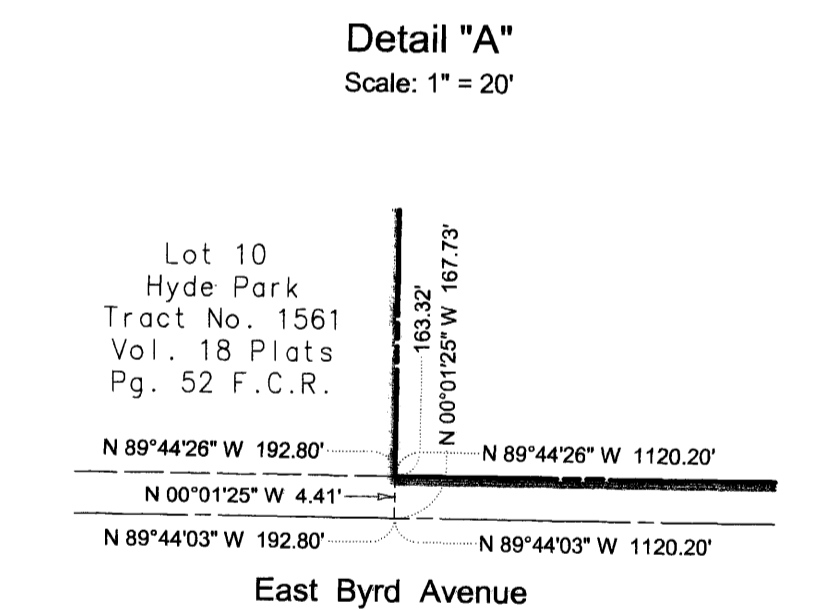
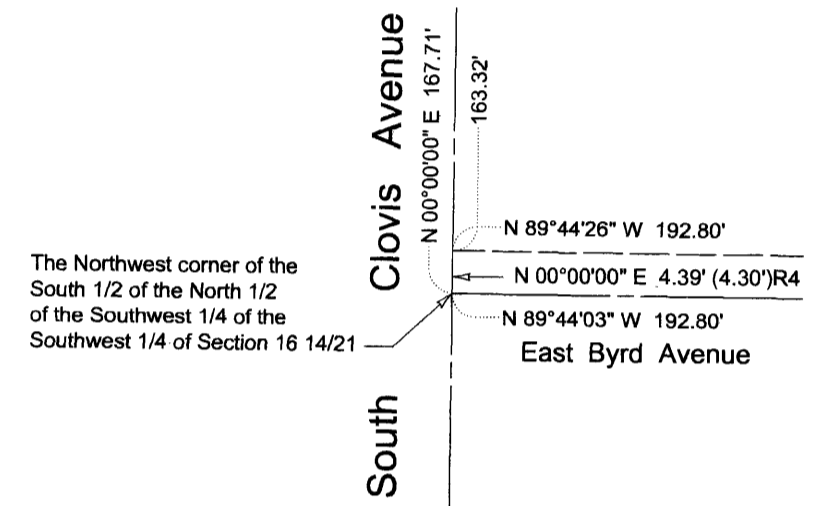
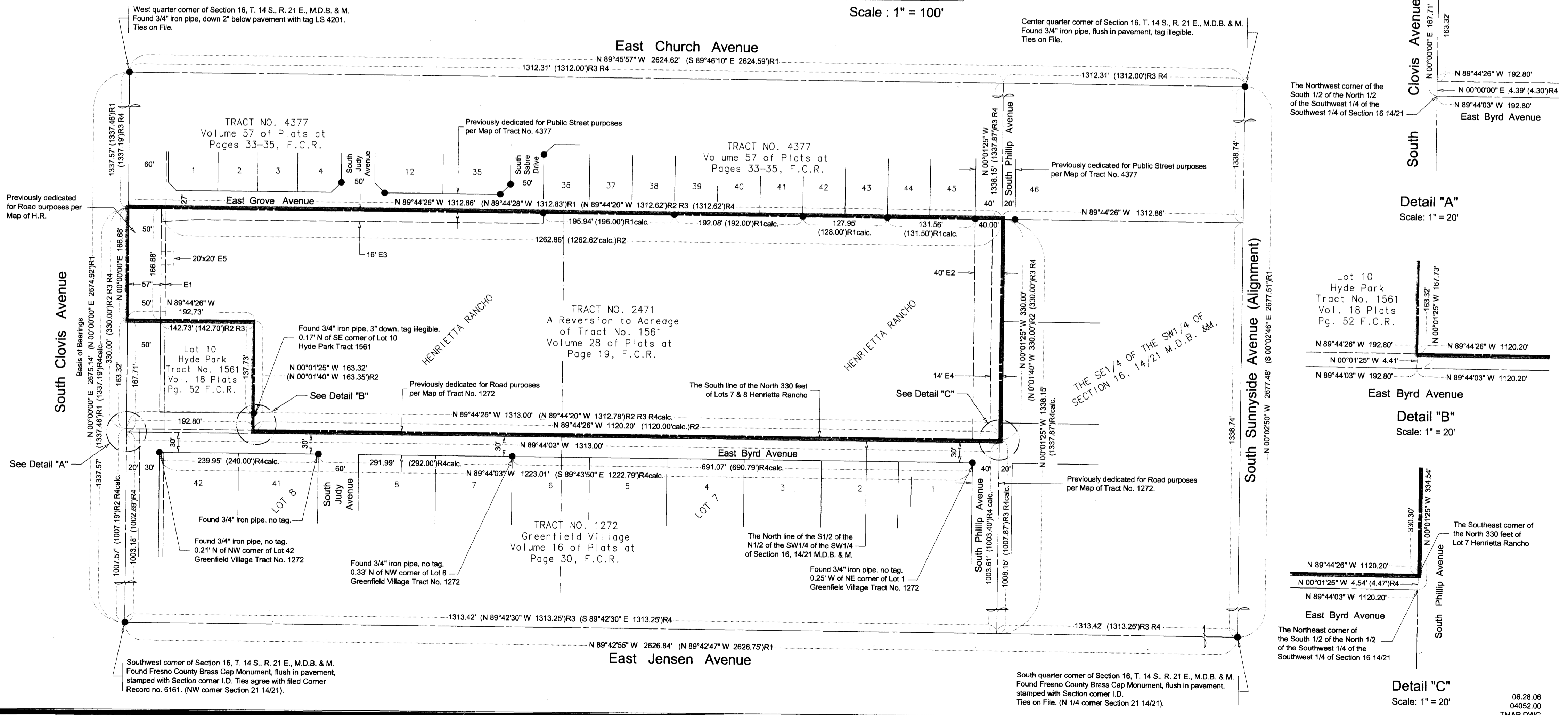
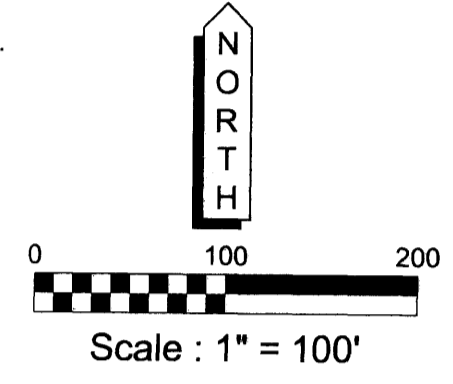
- Found 3/4" iron pipe, down 6", tagged RCE 19789 *and accepted as noted.*
- ()R1 Record data per Map of Tract No. 4377 - Volume 57 of Plats at Pages 33 through 35, inclusive, Fresno County Records.
- ()R2 Record data per Map of Tract No. 2471 - Volume 28 of Plats at Page 19, Fresno County Records.
- ()R3 Record data per Map of Tract No. 1561 - Volume 18 of Plats at Page 52, Fresno County Records.
- ()R4 Record data per Map of Tract No. 1272 - Volume 16 of Plats at Page 30, Fresno County Records.
- H.R. Indicates Map of Henrietta Rancho recorded August 21, 1884 Book 2 of Plats at Page 20, Fresno County Records.
- The Blue Border indicates the limits of the Subdivision.

Notes

- 1. All Block Corners, Lot Corners, Angle Points and Curve Points are marked with a 3/4" x 30" Iron Pipe, Set 6" down with Tag LS 6772 unless otherwise noted.

Basis of Bearings

The West line of the Southwest quarter of Section 16, Township 14 South, Range 21 East, Mount Diablo Base and Meridian as shown on the MAP OF TRACT NO. 4377 recorded in Volume 57 of Plats, Pages 33 through 35, inclusive, Fresno County Records, and is taken to be North 00° 00' 00" East.



Legend

- Monument found and accepted as noted on Sheet 2 of 3 Sheets.
- ⊙ Set 3/4" x 30" iron pipe, up 4" in 6" diameter x 30" P.C.C. monument, down 6" with tag LS 6772 or as noted.
- LPE Indicates Landscape and Pedestrian Easement now offered for dedication for public use.
- PUE Indicates Public Utility Easement now offered for dedication for public use.
- PE Indicates Pedestrian Easement now offered for dedication for public use.
- PPUE Indicates Planting and Public Utility Easement now offered for dedication for public use.
- △ Indicates area now offered for dedication for Public Street purposes.
- ⑥ Indicates Curve Data reference.
- ⑨ Indicates Line Data reference.
- (R) Indicates Radial Bearing.
- Indicates Relinquishment of Direct Vehicular and Pedestrian Access.
- The shaded Blue Border indicates the limits of the Subdivision.

List of Easements

- E1 An easement for right of way for Pole Line purposes granted to the San Joaquin Light and Power Corporation recorded May 29, 1918 as in Book 93 at Page 431 as Document No. 17906 of Official Records of Fresno County.
- E2 An easement for Public Utility purposes granted to the Pacific Gas and Electric Company recorded October 2, 1987 as Instrument No. 87121012 of Official Records of Fresno County.
- E3 An easement for Public Street purposes granted to the City of Fresno recorded May 3, 1994 as Instrument No. 94075890 of Official Records of Fresno County.
- E4 An easement for Storm Drainage Pipeline purposes granted to the Fresno Metropolitan Flood Control District recorded March 26, 2004 as Instrument No. 2004-0077584 of Official Records of Fresno County.
- E5 An easement for Communication Facility purposes granted to the Pacific Bell and Telephone Company recorded April 1, 2004 as Instrument No. 2004-0070483 and a "Notice of Final Description" recorded July 20, 2004 as Instrument No. 2004-0157504 of Official Records of Fresno County.

Notes

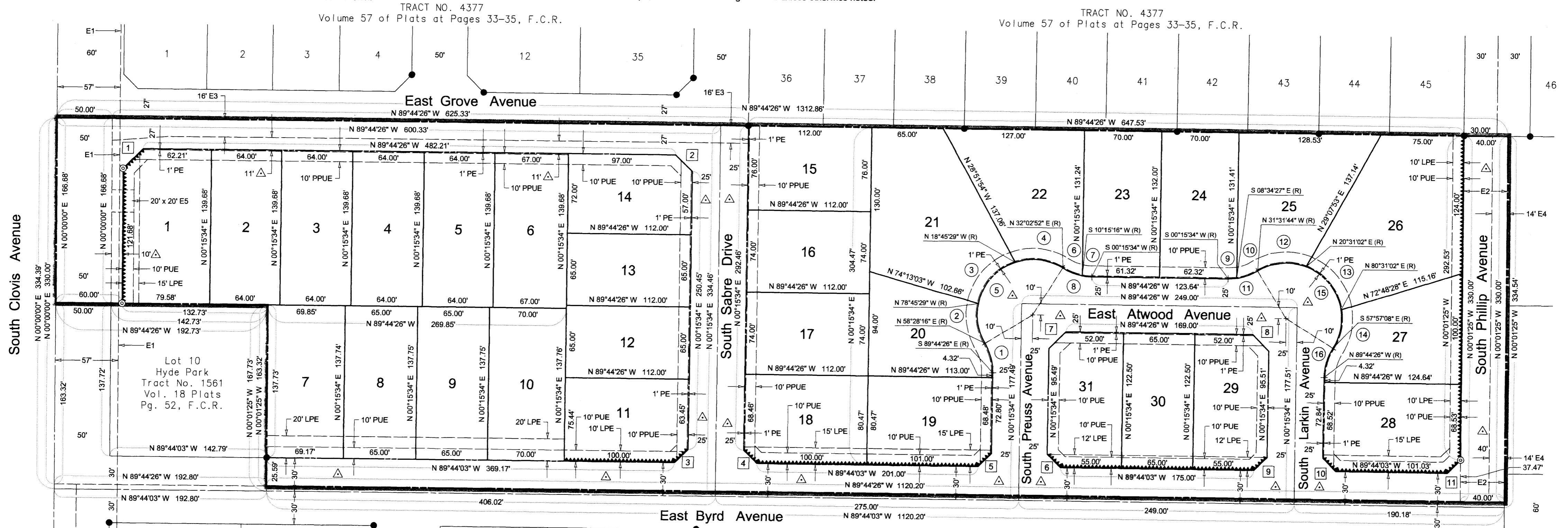
- 1. All Block Corners, Lot Corners, Angle Points and Curve Points are marked with a 3/4" x 30" Iron Pipe, Set 6" down with Tag LS 6772 unless otherwise noted.

FINAL MAP OF
TRACT NO. 5376
THE CLASSICS II AT SUNNYSIDE
IN THE CITY OF FRESNO
COUNTY OF FRESNO - STATE OF CALIFORNIA
SURVEYED AND PLATTED IN JUNE 2005
BY LARS ANDERSEN & ASSOCIATES, INC.
CONSISTING OF THREE SHEETS SHEET 3 OF 3

Basis of Bearings

The West line of the Southwest quarter of Section 16, Township 14 South, Range 21 East, Mount Diablo Base and Meridian as shown on the MAP OF TRACT NO. 4377 recorded in Volume 57 of Plats, Pages 33 through 35, inclusive, Fresno County Records, and is taken to be North 00° 00' 00" East.

TRACT NO. 4377
Volume 57 of Plats at Pages 33-35, F.C.R.



CURVE DATA

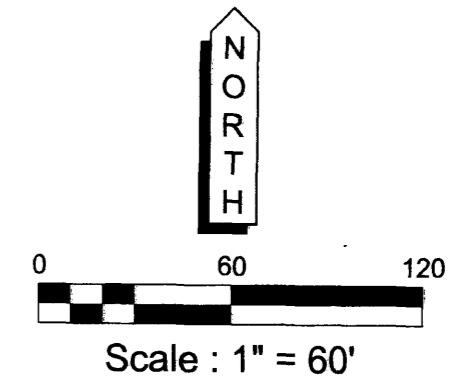
No.	Radius	Delta	Length
1	50.00'	31°47'18"	27.74'
2	50.00'	42°46'15"	37.32'
3	50.00'	60°00'00"	52.36'
4	50.00'	50°48'21"	44.34'
5	50.00'	153°34'36"	134.02'
6	50.00'	21°47'35"	19.02'
7	50.00'	9°59'43"	8.72'
8	50.00'	31°47'18"	27.74'

CURVE DATA

No.	Radius	Delta	Length
9	50.00'	8°50'01"	7.71'
10	50.00'	22°57'17"	20.03'
11	50.00'	31°47'18"	27.74'
12	50.00'	52°02'46"	45.42'
13	50.00'	60°00'00"	52.36'
14	50.00'	41°31'50"	36.24'
15	50.00'	153°34'36"	134.02'
16	50.00'	31°47'18"	27.74'

LINE DATA

No.	Bearing	Distance
1	N 45°08'21" E	25.40'
2	N 44°44'26" W	21.21'
3	N 45°15'45" E	16.97'
4	N 44°44'15" W	16.97'
5	N 45°15'45" E	16.97'
6	N 44°44'15" W	16.97'
7	N 45°15'45" E	21.21'
8	N 44°44'26" W	21.21'
9	N 45°15'45" E	16.97'
10	N 44°44'15" W	16.97'
11	N 45°07'16" E	16.94'



TRACT NO. 1272
Greenfield Village
Volume 16 of Plats at Page 30, F.C.R.