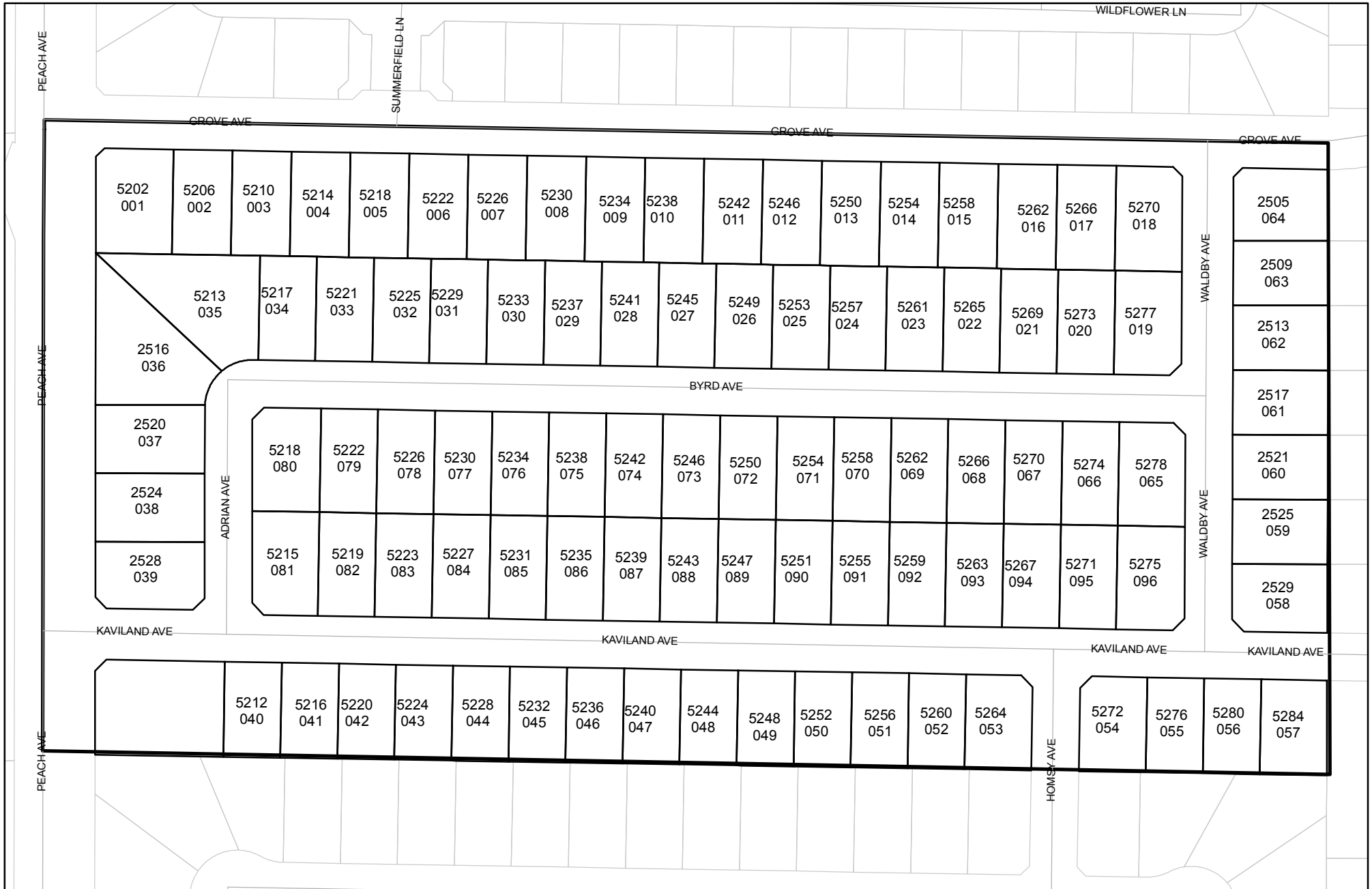




Prepared on Tue Apr 02 13:57:38 2013

Street Names, Addresses and (Lot Numbers) for T5374



FINAL MAP OF TRACT NO. 5374

IN THE CITY OF FRESNO
FRESNO COUNTY, CALIFORNIA
SURVEYED AND PLATTED IN FEBRUARY, 2005
BY INGELS - BRAUN & ASSOCIATES

CONSISTING OF TWO SHEETS
SHEET 2 OF 2 SHEETS

BASIS OF BEARINGS

THE WEST LINE OF THE SOUTHWEST QUARTER OF SECTION 17, T.14 S., R.21 E., M.D.B. & M. WAS TAKEN TO BE N 00°22'28" W, (SAID LINE ALSO BEING THE CENTERLINE OF SOUTH PEACH AVENUE), PER TRACT NO. 4606, RECORDED IN VOLUME 57 OF PLATS AT PAGES 64 THROUGH 66, FRESNO COUNTY RECORDS.

LEGEND

- EXISTING MONUMENT FOUND AND ACCEPTED OR AS NOTED.
- ⊙ SET 1" O.D. IRON PIPE, 30" LONG, UP 4", IN 6" DIA. x 30" CONCRETE MONUMENT DOWN 6" AND TAGGED PLS 6619, EXCEPT AS NOTED.
- (...) RECORD DATA PER TRACT NO. 4606, RECORDED IN VOLUME 57 OF PLATS AT PAGES 64 THROUGH 66, F.C.R.
- C.R. CORNER RECORD ON FILE WITH FRESNO COUNTY SURVEYOR.
- F.C.R. FRESNO COUNTY RECORDS
- LE LANDSCAPE EASEMENT NOW OFFERED FOR DEDICATION FOR PUBLIC USE.
- O.R.F.C. OFFICIAL RECORDS FRESNO COUNTY
- PE PEDESTRIAN EASEMENT NOW OFFERED FOR DEDICATION FOR PUBLIC USE.
- PUE PUBLIC UTILITY EASEMENT NOW OFFERED FOR DEDICATION FOR PUBLIC USE.
- BLUE BORDER INDICATES THE LIMITS OF THIS SUBDIVISION.
- PPUE PLANTING AND PUBLIC UTILITY EASEMENT NOW OFFERED FOR DEDICATION FOR PUBLIC USE.
- (R) DENOTES RADIAL BEARING
- ▲▲▲ INDICATES RELINQUISHMENT OF DIRECT ACCESS RIGHTS.
- △ INDICATES PORTIONS NOW OFFERED FOR DEDICATION FOR PUBLIC STREET AND UTILITY PURPOSES.
- PORTIONS PREVIOUSLY DEEDED TO THE COUNTY OF FRESNO FOR RIGHT OF WAY FOR PUBLIC ROAD PURPOSES PER DEED RECORDED AUGUST 10, 1895, IN BOOK 189, PAGE 427 OF DEEDS.
- PORTION PREVIOUSLY DEEDED TO THE CITY OF FRESNO FOR PUBLIC STREET PURPOSES PER DOCUMENT RECORDED ON JUNE 13, 1994, AS DOCUMENT NO. 9408707, O.R.F.C.
- PORTIONS PREVIOUSLY DEDICATED FOR PUBLIC STREET PURPOSES PER TRACT NO. 4606, RECORDED IN VOLUME 57 OF PLATS AT PAGES 64 THROUGH 66, F.C.R.

NOTE :

1" O.D. x 30" LONG IRON PIPE TO BE SET 6" DOWN AND TAGGED PLS-6619, AT ALL LOT CORNERS, ANGLE POINTS, BEGINNING OF CURVES AND END OF CURVES, OR AS NOTED WITHIN THE TIME SPECIFIED IN THE SUBDIVISION AGREEMENT FOR THIS TRACT.

OUTLOT "A" SHALL BE DEEDED TO THE CITY OF FRESNO FOR PUBLIC WATER WELL SUPPLY PURPOSES.

LINE TABLE

LINE	BEARING	LENGTH
L1	S44°53'23"E	13.25'
L2	S45°06'06"W	17.39'
L3	S45°03'31"W	17.39'
L4	N44°55'44"W	16.54'
L5	N45°04'24"E	12.31'
L6	S44°30'30"E	17.46'
L7	N45°03'31"E	16.52'
L8	N45°30'11"E	17.46'
L9	N44°54'15"W	17.52'
L10	N45°06'37"E	13.17'
L11	S44°54'53"E	17.53'
L12	S45°05'45"W	17.39'
L13	N44°56'29"W	17.53'
L14	N45°03'31"E	17.39'
L15	S00°18'01"E	28.01'

CURVE TABLE

CURVE	RADIUS	LENGTH	CHORD	DELTA
C1	50.00'	79.30'	71.24'	90°51'58"
C2	50.00'	35.77'	35.01'	40°59'22"
C3	50.00'	41.15'	40.00'	47°09'14"
C4	50.00'	2.38'	2.38'	2°43'22"

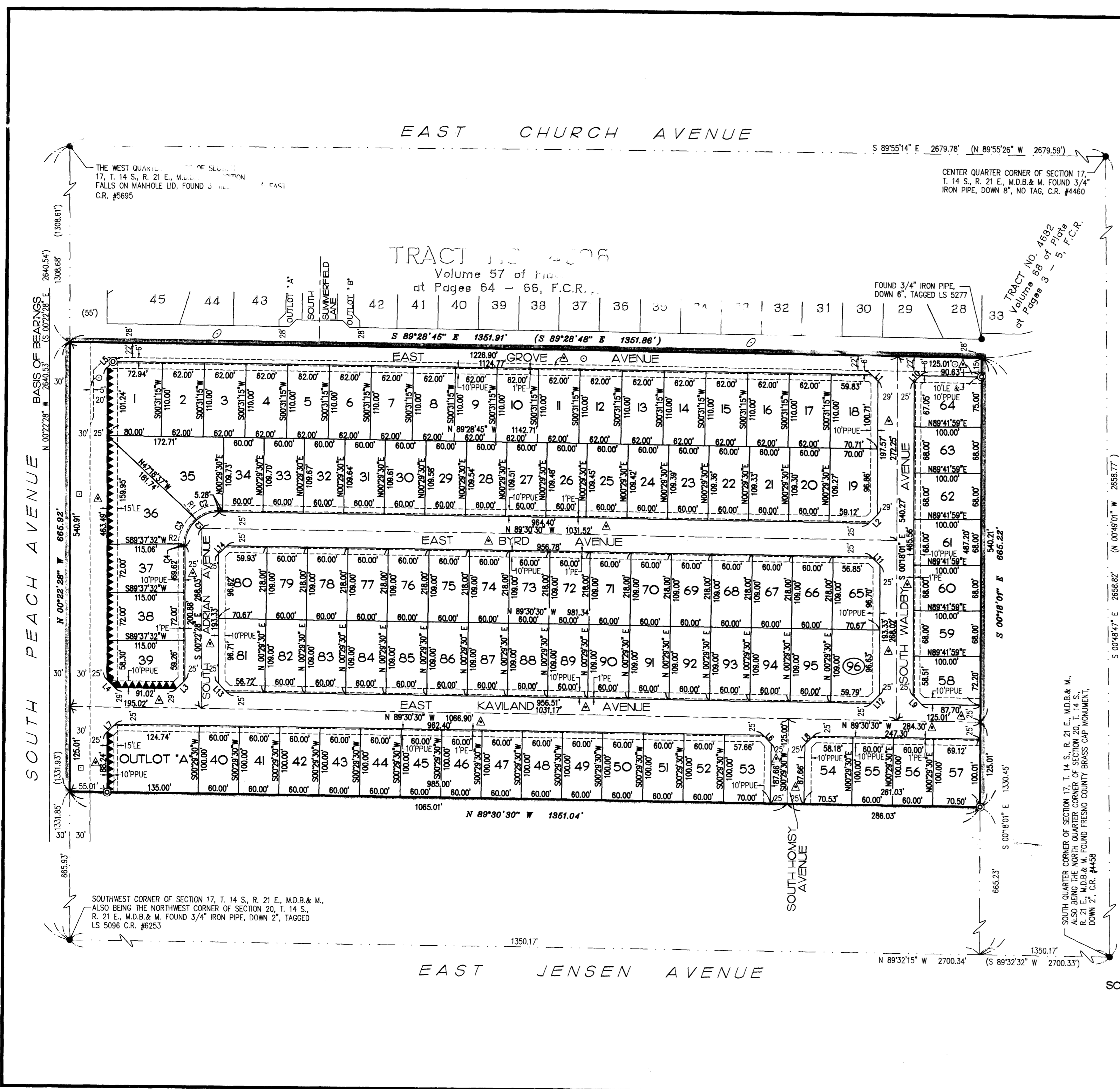
RADIAL TABLE

RADIAL	BEARING
R1	N40°29'52"W
R2	N87°39'06"W

REVISIONS

08/02/05	TAS
12/19/05	TM

BY: ESPINOZA -02/08/05
IBA CADFILE: 04030FM



SCALE 1" = 100'