



Prepared on Wed Dec 14 21:52:27 2016

Street Names, Addresses and (Lot Numbers) for T5368

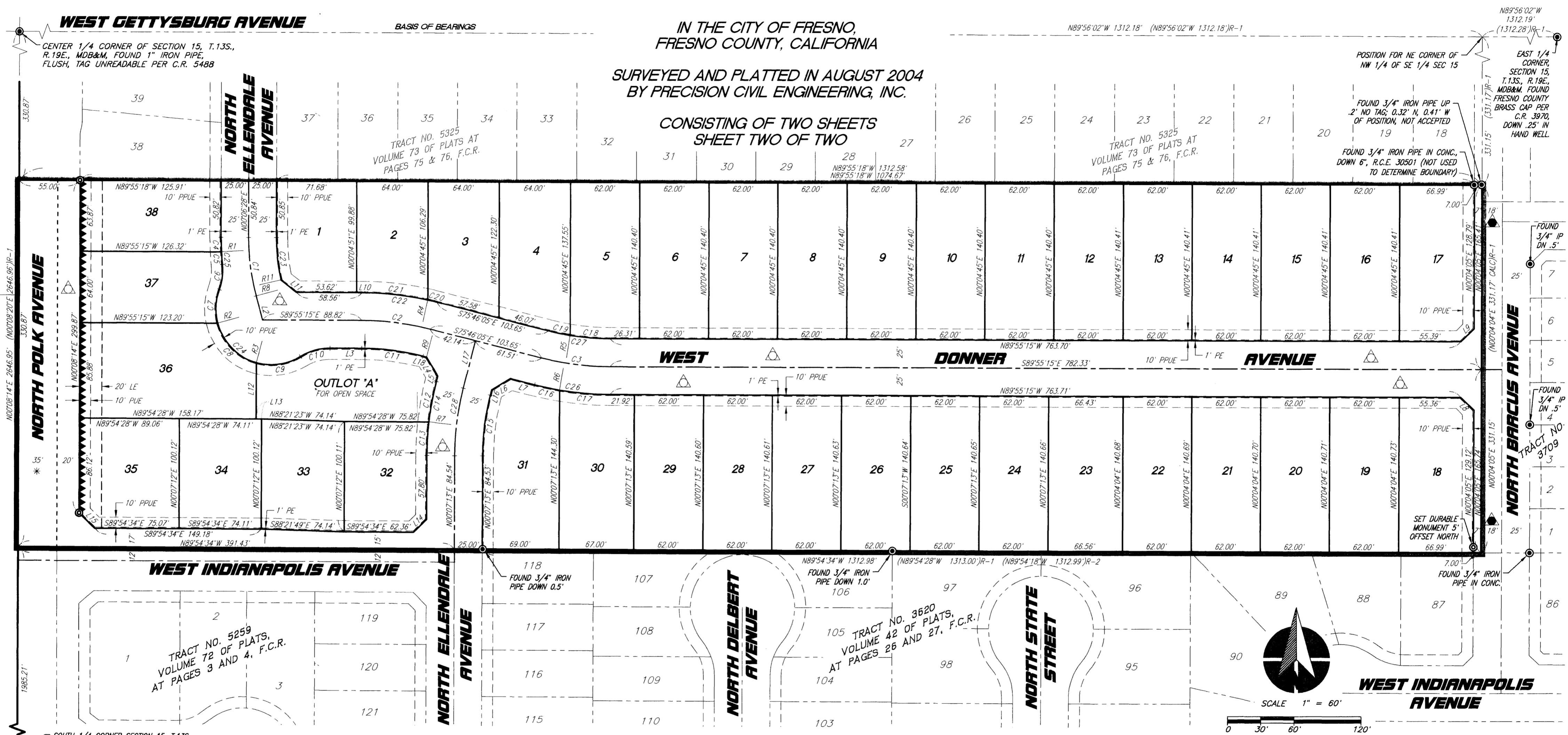


FINAL MAP OF TRACT NO. 5368

IN THE CITY OF FRESNO, FRESNO COUNTY, CALIFORNIA

SURVEYED AND PLATTED IN AUGUST 2004 BY PRECISION CIVIL ENGINEERING, INC.

CONSISTING OF TWO SHEETS SHEET TWO OF TWO



NOTES:

- DISTANCES NOT MONUMENTED ARE CALCULATED
- SET 3/4" x 30" IRON PIPE, DOWN 6", TAGGED LS 5096, FOR ALL CORNERS, CURVE POINTS, AND CORNER CUTOFFS, EXCEPT AS NOTED.

BASIS OF BEARING:
THE NORTH LINE OF THE SOUTHEAST QUARTER OF SECTION 15, T. 13 S., R. 19 E., M.D.B.&M. TAKEN AS N89°56'02"W AS SHOWN ON TRACT NO. 3709, VOLUME 43 OF PLATS AT PAGES 48 & 49, F.C.R.

LEGEND:

- MONUMENT FOUND AND ACCEPTED AS NOTED
- ⊙ SET 3/4" IP, 30" LONG, UP 4" IN 6" DIAMETER X 30" CONCRETE MONUMENT, DN 0.5', TAGGED LS 5096
- ()R-1 RECORD DATA PER TRACT No. 3709, FILED IN VOLUME 43 OF PLATS AT PAGES 48 & 49, F.C.R.
- ()R-2 RECORD DATA PER TRACT No. 3620, FILED IN VOLUME 42 OF PLATS AT PAGES 26 & 27, F.C.R.
- PPUE PUBLIC UTILITY EASEMENT NOW OFFERED FOR DEDICATION FOR PUBLIC USE
- PE PEDESTRIAN EASEMENT NOW OFFERED FOR DEDICATION FOR PUBLIC USE
- ▲ NOW OFFERED FOR DEDICATION FOR PUBLIC STREET PURPOSES
- BLUE BORDER INDICATES LIMITS OF THIS SUBDIVISION.
- ▲ PREVIOUSLY DEDICATED FOR PUBLIC STREET PURPOSES PER TRACT No. 3709, FILED IN VOLUME 43 OF PLATS AT PAGE 48 & 49, F.C.R.
- * PREVIOUSLY DEDICATED EASEMENT FOR PUBLIC STREET PURPOSES DOC. NO. 92064380, RECORDED MAY 13, 1992, OFFICIAL RECORDS.
- LE LANDSCAPE EASEMENT NOW OFFERED FOR DEDICATION FOR PUBLIC USE
- PE PLANTING AND PUBLIC UTILITY EASEMENT NOW OFFERED FOR DEDICATION FOR PUBLIC USE
- PE PEDESTRIAN EASEMENT NOW OFFERED FOR DEDICATION FOR PUBLIC USE
- ▲▲▲ INDICATES RELINQUISHMENT OF DIRECT ACCESS RIGHTS

LINE	BEARING	LENGTH
L1	S00°06'28"W	50.96'
L2	S15°03'34"E	22.49'
L3	N89°55'15"W	28.49'
L4	N30°11'59"W	19.83'
L5	N14°13'55"E	4.87'
L6	S59°13'54"W	19.77'
L7	N75°46'05"W	22.53'
L8	N44°56'40"W	16.44'
L9	N45°05'20"E	16.44'
L10	S89°55'15"E	4.94'
L11	S51°52'53"E	17.63'
L12	S00°07'25"W	50.74'
L13	N89°54'28"W	5.00'
L14	N45°06'22"E	16.63'
L15	S44°54'07"E	19.81'
L16	N14°13'55"E	5.05'
L17	S14°13'55"W	44.03'
L18	N75°46'05"W	3.26'

CURVE	LENGTH	RADIUS	DELTA	CHORD
C1	52.94	200.00	15°10'02"	52.79'
C2	61.75	250.00	14°09'10"	61.60'
C3	61.75	250.00	14°09'10"	61.60'
C4	13.06	225.00	3°19'30"	13.06'
C5	11.23	225.00	2°51'38"	11.23'
C6	22.95	50.00	26°18'15"	22.75'
C7	30.73	50.00	35°13'02"	30.25'
C8	51.87	50.00	59°26'10"	49.57'
C9	41.26	50.00	47°16'58"	40.10'
C10	27.74	50.00	31°47'18"	27.39'
C11	55.58	225.00	14°09'10"	55.44'
C12	37.11	275.00	7°43'56"	37.08'
C13	30.62	275.00	6°22'46"	30.60'
C14	67.73	275.00	14°06'42"	67.56'

CURVE	LENGTH	RADIUS	DELTA	CHORD
C15	55.42'	225.00'	14°06'42"	55.28'
C16	22.64'	275.00'	4°43'03"	22.63'
C17	45.29'	275.00'	9°26'07"	45.29'
C18	35.84'	225.00'	9°07'38"	35.80'
C19	19.74'	225.00'	5°01'32"	19.73'
C20	8.40'	275.00'	1°44'59"	8.40'
C21	59.53'	275.00'	12°24'11"	59.41'
C22	67.93'	275.00'	14°09'10"	67.76'
C23	38.47'	175.00'	12°35'42"	38.39'
C24	123.86'	50.00'	141°56'08"	94.53'
C25	24.29'	225.00'	6°11'08"	24.28'
C26	67.93'	275.00'	14°09'10"	67.76'
C27	55.58'	225.00'	14°09'10"	55.44'
C28	61.57'	250.00'	14°06'42"	61.42'

LINE	BEARING
R1	S86°46'58"W
R2	S75°00'33"W
R3	S15°34'23"W
R4	N12°28'56"E
R5	S09°12'23"W
R6	S09°30'52"W
R7	N8°30'01"W
R8	S74°56'26"W
R9	N15°04'03"E
R10	S15°04'03"W
R11	S77°30'46"W

PREPARED BY:
PRECISION CIVIL ENGINEERING, INC.
7690 N. PALM AVE STE. 104
FRESNO, CA. 93710
PH(559)449-4500 FAX(559)449-4515