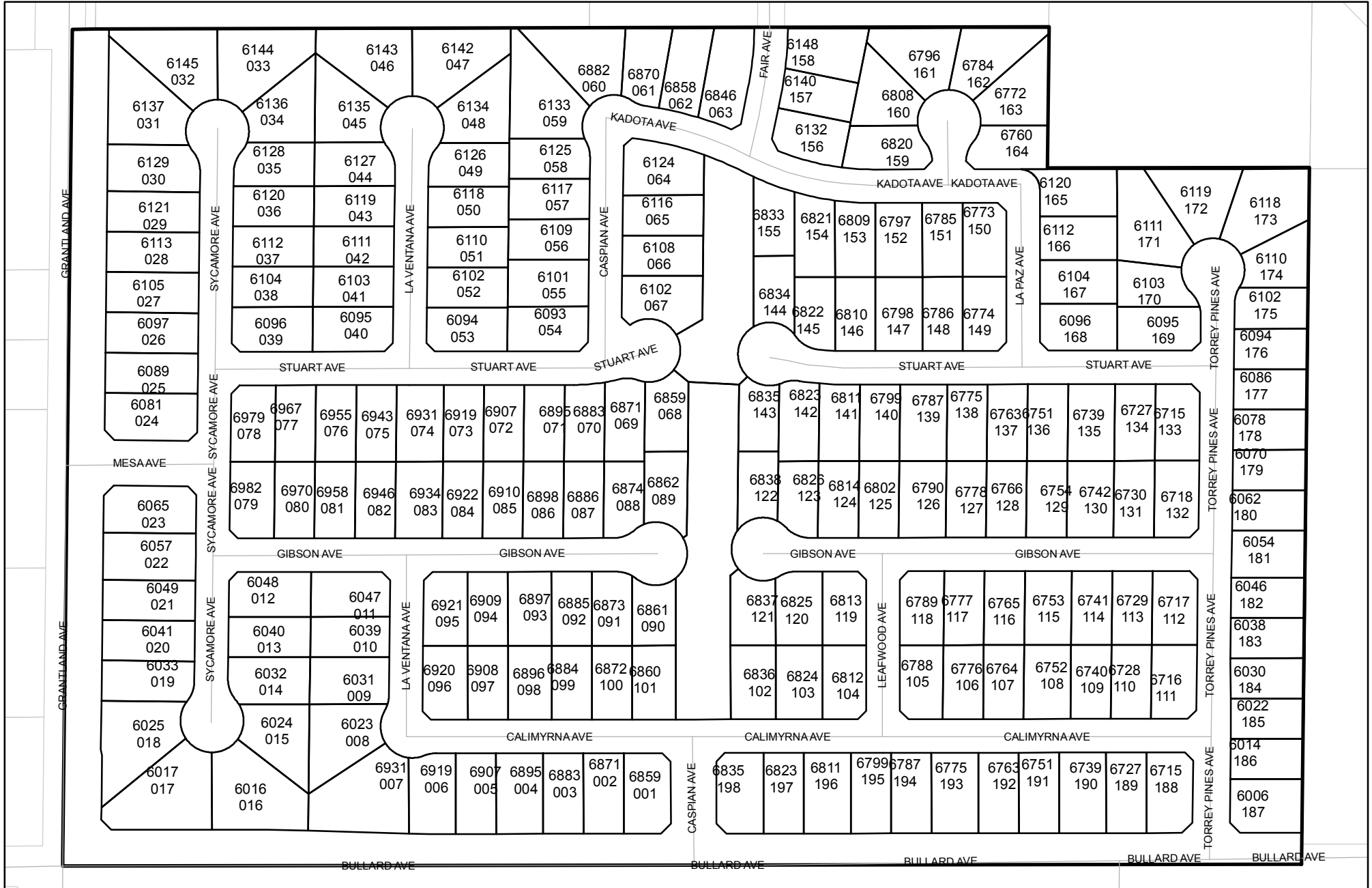




Street Names, Addresses and (Lot Numbers) for T5357

Prepared on Tue Apr 02 13:59:03 2013



TRACT NO. 5357

A PLANNED DEVELOPMENT
 IN THE CITY OF FRESNO, COUNTY OF FRESNO, STATE OF CALIFORNIA
 SURVEYED AND PLATTED IN JULY 2005, BY GARY G. GIANNETTA
 BEING A MERGER AND RESUBDIVISION OF A PORTION OF FIG GARDEN SUBDIVISION NO. 7
CONSISTING OF THREE SHEETS
SHEET TWO OF THREE SHEETS

BASIS OF BEARINGS

THE SOUTH LINE OF THE SOUTHWEST QUARTER OF SECTION 4, TOWNSHIP 13 SOUTH, RANGE 19 EAST, MOUNT DIABLO BASE AND MERIDIAN, TAKEN AS BEARING N 89°41'26" E AS PER MAP OF TRACT 5247, RECORDED IN VOLUME 71, PAGES 54 THROUGH 58 OF PLATS, FRESNO COUNTY RECORDS.

SCALE: 1" = 100'



NOTE:

- SET 3/4" IRON PIPE, 6" DOWN, TAGGED RCE 26996 AT ALL LOT CORNERS.
- THOSE PORTIONS OF PUBLIC STREETS, PREVIOUSLY DEDICATED FOR PUBLIC STREET PURPOSES ON THE MAP OF J.C. FORKNER FIG GARDENS SUBDIVISION NO. 7 RECORDED IN VOLUME 10, PAGE 17 OF PLATS FRESNO COUNTY RECORDS, WHICH ARE NOT DELINEATED ON THIS MAP ARE DEEMED TO BE ABANDONED PURSUANT TO SECTION 66499.20 1/2 OF THE SUBDIVISION MAP ACT.
- OUTLOT "A" NOW OFFERED FOR DEDICATION TO THE CITY OF FRESNO AS AN EASEMENT FOR OPEN SPACE PARK PURPOSES.

3/4" IRON PIPE, 9" DOWN, WITH NO TAG, AS BEING THE WEST QUARTER CORNER OF SECTION 4, T 13 S, R 19 E, M.D.B. & M.

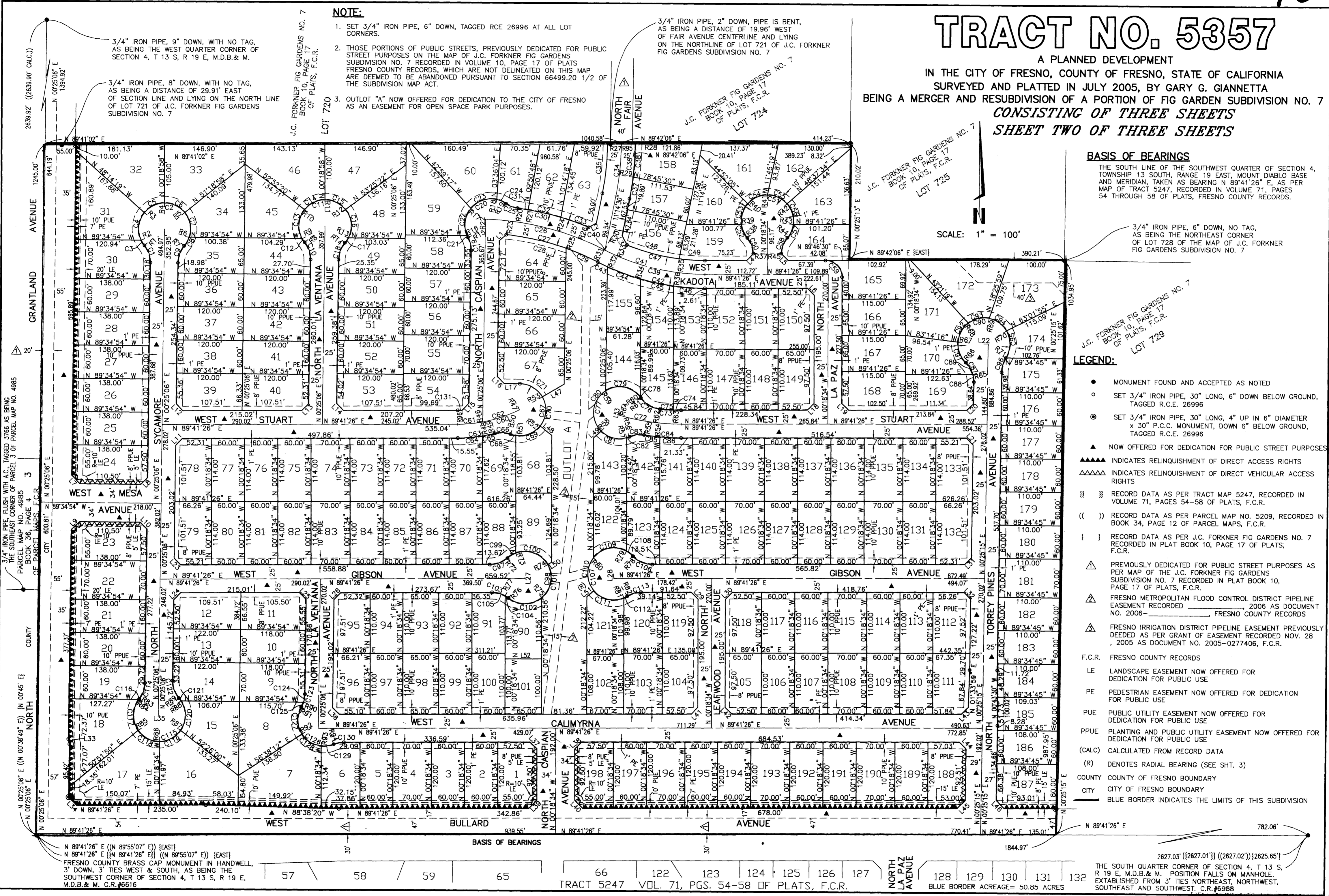
3/4" IRON PIPE, 8" DOWN, WITH NO TAG, AS BEING A DISTANCE OF 29.91' EAST OF SECTION LINE AND LYING ON THE NORTH LINE OF LOT 721 OF J.C. FORKNER FIG GARDENS SUBDIVISION NO. 7

3/4" IRON PIPE, 2" DOWN, PIPE IS BENT, AS BEING A DISTANCE OF 19.96' WEST OF FAIR AVENUE CENTERLINE AND LYING ON THE NORTHLINE OF LOT 721 OF J.C. FORKNER FIG GARDENS SUBDIVISION NO. 7

3/4" IRON PIPE, 6" DOWN, NO TAG, AS BEING THE NORTHEAST CORNER OF LOT 728 OF THE MAP OF J.C. FORKNER FIG GARDENS SUBDIVISION NO. 7

LEGEND:

- MONUMENT FOUND AND ACCEPTED AS NOTED
- SET 3/4" IRON PIPE, 30" LONG, 6" DOWN BELOW GROUND, TAGGED R.C.E. 26996
- ⊙ SET 3/4" IRON PIPE, 30" LONG, 4" UP IN 6" DIAMETER x 30" P.C.C. MONUMENT, DOWN 6" BELOW GROUND, TAGGED R.C.E. 26996
- ▲ NOW OFFERED FOR DEDICATION FOR PUBLIC STREET PURPOSES
- ▲▲▲▲ INDICATES RELINQUISHMENT OF DIRECT ACCESS RIGHTS
- ▲▲▲▲ INDICATES RELINQUISHMENT OF DIRECT VEHICULAR ACCESS RIGHTS
- { } RECORD DATA AS PER TRACT MAP 5247, RECORDED IN VOLUME 71, PAGES 54-58 OF PLATS, F.C.R.
- () RECORD DATA AS PER PARCEL MAP NO. 5209, RECORDED IN BOOK 34, PAGE 12 OF PARCEL MAPS, F.C.R.
- { } RECORD DATA AS PER J.C. FORKNER FIG GARDENS NO. 7 RECORDED IN PLAT BOOK 10, PAGE 17 OF PLATS, F.C.R.
- △ PREVIOUSLY DEDICATED FOR PUBLIC STREET PURPOSES AS PER MAP OF THE J.C. FORKNER FIG GARDENS SUBDIVISION NO. 7 RECORDED IN PLAT BOOK 10, PAGE 17 OF PLATS, F.C.R.
- △ FRESNO METROPOLITAN FLOOD CONTROL DISTRICT PIPELINE EASEMENT RECORDED 2006 AS DOCUMENT NO. 2006- , FRESNO COUNTY RECORDS
- △ FRESNO IRRIGATION DISTRICT PIPELINE EASEMENT PREVIOUSLY DEEDED AS PER GRANT OF EASEMENT RECORDED NOV. 28 , 2005 AS DOCUMENT NO. 2005-0277406, F.C.R.
- F.C.R. FRESNO COUNTY RECORDS
- LE LANDSCAPE EASEMENT NOW OFFERED FOR DEDICATION FOR PUBLIC USE
- PE PEDESTRIAN EASEMENT NOW OFFERED FOR DEDICATION FOR PUBLIC USE
- PUE PUBLIC UTILITY EASEMENT NOW OFFERED FOR DEDICATION FOR PUBLIC USE
- PPUE PLANTING AND PUBLIC UTILITY EASEMENT NOW OFFERED FOR DEDICATION FOR PUBLIC USE
- (CALC) CALCULATED FROM RECORD DATA
- (R) DENOTES RADIAL BEARING (SEE SHT. 3)
- COUNTY COUNTY OF FRESNO BOUNDARY
- CITY CITY OF FRESNO BOUNDARY
- BLUE BORDER INDICATES THE LIMITS OF THIS SUBDIVISION



N 89°41'26" E (N 89°55'07" E) [EAST]
 N 89°41'26" E (N 89°55'07" E) [EAST]
 FRESNO COUNTY BRASS CAP MONUMENT IN HANDWELL,
 3" DOWN, 3" TIES WEST & SOUTH, AS BEING THE
 SOUTHWEST CORNER OF SECTION 4, T 13 S, R 19 E,
 M.D.B. & M. C.R. #6616

2627.03' ± {2627.01'} { (2627.02') } { 2625.65' }

THE SOUTH QUARTER CORNER OF SECTION 4, T 13 S,
 R 19 E, M.D.B. & M. POSITION FALLS ON MANHOLE,
 ESTABLISHED FROM 3" TIES NORTHEAST, NORTHWEST,
 SOUTHEAST AND SOUTHWEST, C.R. #6988

TRACT 5247 VOL. 71, PGS. 54-58 OF PLATS, F.C.R.

NORTH LA PAZ AVENUE

BLUE BORDER ACREAGE= 50.85 ACRES