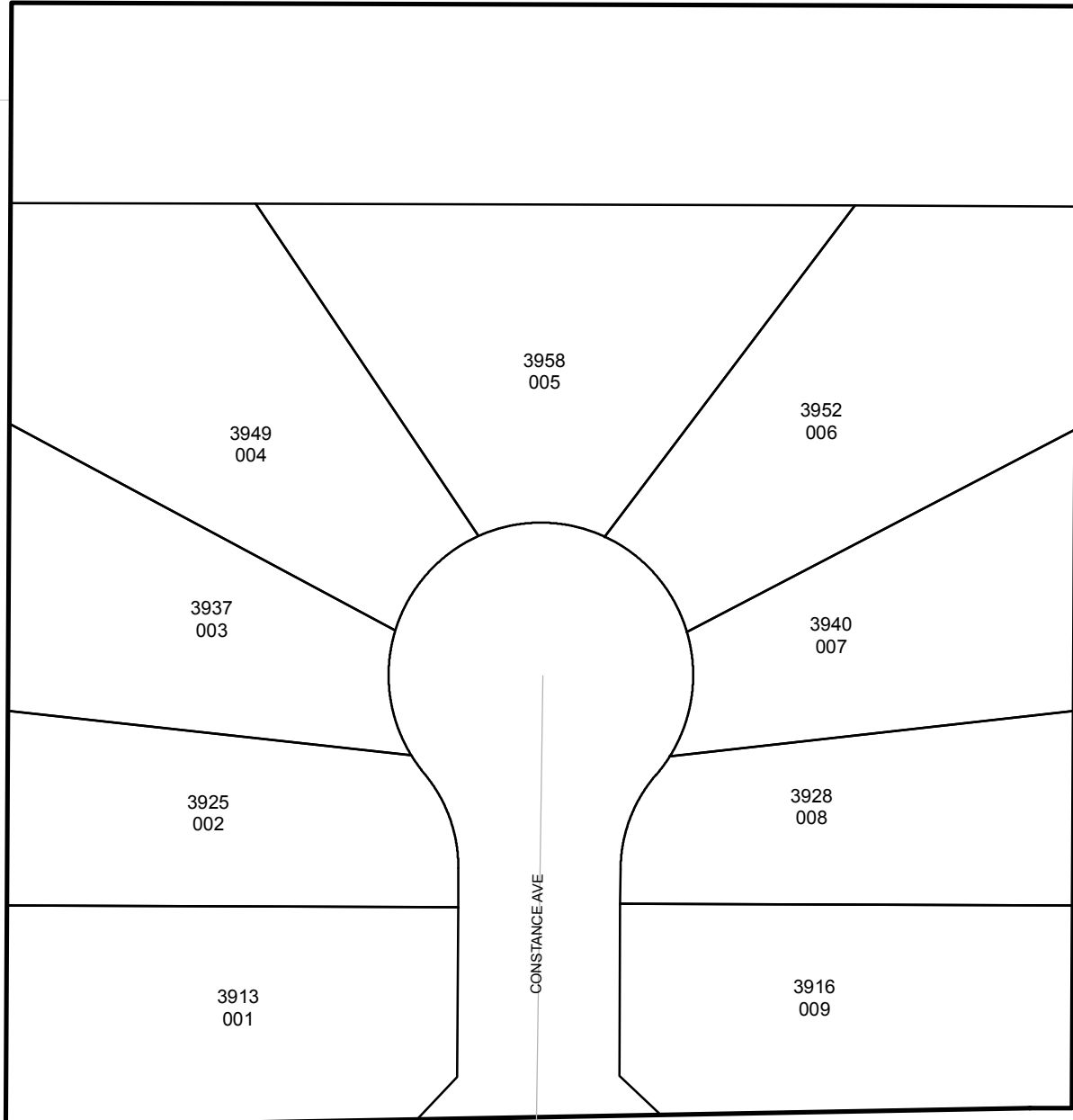




Street Names, Addresses and (Lot Numbers) for T5356

Prepared on Mon Oct 22 14:53:46 2018

ASHLAN AVE



3949
004

3958
005

3952
006

3937
003

3940
007

3925
002

3928
008

3913
001

3916
009

CONSTANCE AVE

BUCKINGHAM WAY

BUCKINGHAM WAY

REVERSION TO ACREAGE FOR TRACT NO. 5356

IN THE CITY OF FRESNO,
COUNTY OF FRESNO, STATE OF CALIFORNIA.

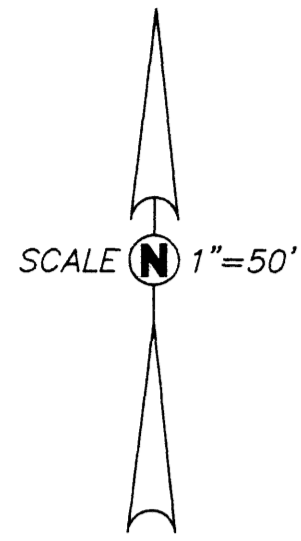
CITY OF FRESNO

2800 FRESNO STREET
FRESNO, CALIFORNIA 93721
(559) 821-2489

Sheet Two of Two Sheets

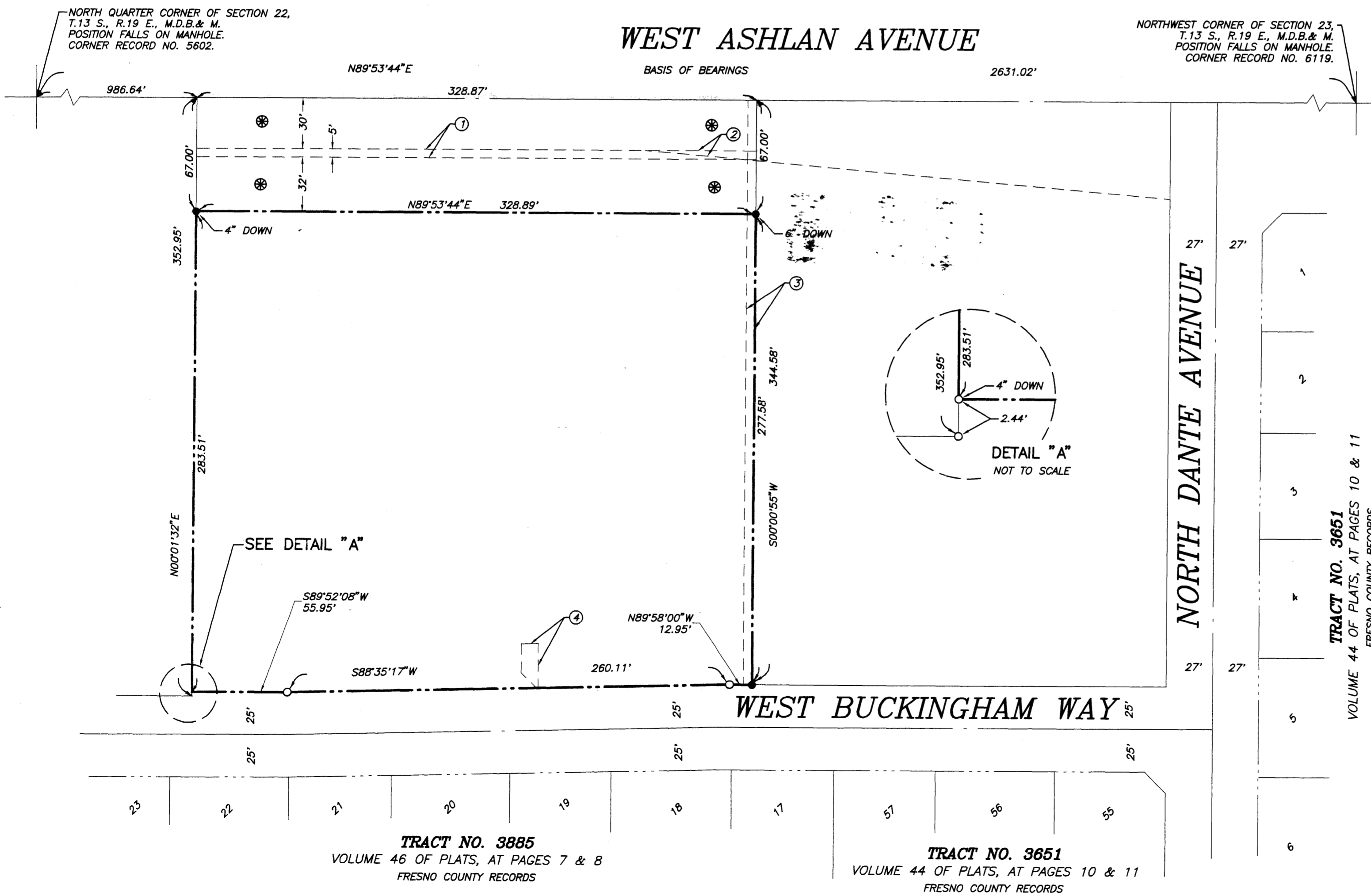
NOTE:

1. BEARINGS AND DISTANCES SHOWN ON THIS MAP ARE TAKEN AND CALCULATED FROM PARCEL MAP NO. 2000-19, RECORDED IN BOOK 65 OF PARCEL MAPS, AT PAGES 59 AND 60, FRESNO COUNTY RECORDS.
2. THOSE PORTIONS OFFERED FOR DEDICATION FOR PUBLIC STREET AND EASEMENT PURPOSES TOGETHER WITH 15" WIDE STORM DRAIN PIPE EASEMENT RECORDED APRIL 11, 2006, AS DOCUMENT NO. 2006-0075462, OFFICIAL RECORDS OF FRESNO COUNTY AS SHOWN ON FINAL MAP OF TRACT NO. 5356, ACCORDING TO THE MAP THEREOF RECORDED IN VOLUME 75 OF PLATS, AT PAGES 12 AND 13, FRESNO COUNTY RECORDS, WHICH ARE NOT DELINEATED ON THIS MAP ARE DEEMED ABANDONED PURSUANT TO SECTION 66499.20 1/2 OF THE SUBDIVISION MAP ACT.



BASIS OF BEARINGS

THE NORTH LINE OF THE NORTHEAST QUARTER OF SECTION 22, TOWNSHIP 13 SOUTH, RANGE 19 EAST, MOUNT DIABLO BASE AND MERIDIAN, TAKEN AS N 89°53'44" E AS SHOWN TRACT MAP NO. 5356, RECORDED IN VOLUME 75 OF PLATS, PAGES 12 & 13, FRESNO COUNTY RECORDS.



LEGEND:

- — — — — INDICATES PARCEL BOUNDARY LINE
- — — — — INDICATES CENTERLINE/SECTION LINE
- — — — — INDICATES RIGHT-OF-WAY LINE
- — — — — INDICATES EASEMENT LIMITS
- — — — — INDICATES EXISTING LOT LINES
- — — — — BLUE BORDER INDICATES THE LIMIT OF THIS SUBDIVISION
- M.D.B. & M. MOUNT DIABLO BASE & MERIDIAN
- ⊗ INDICATES AREA OFFERED FOR DEDICATION FOR PUBLIC STREET PURPOSES AS SHOWN IN TRACT MAP NO. 5356 TO REMAINED
- FOUND DURABLE 3/4" X 30" IRON PIPE TAGGED LS 4823, AT SURFACE OR AS NOTED PER CITY STD. DWG. P-36
- FOUND 3/4" IRON PIPE 6" BELOW SURFACE TAGGED RCE 26996, UNLESS NOTED OTHERWISE.
- ① INDICATES PREVIOUSLY DEEDED TO THE CITY OF FRESNO FOR PUBLIC STREET PURPOSES PER INSTRUMENT RECORDED AUGUST 5, 1992, AS DOCUMENT NO. 92109260, OFFICIAL RECORDS OF FRESNO COUNTY.
- ② INDICATES PREVIOUSLY DEEDED TO THE CITY OF FRESNO FOR PUBLIC STREET PURPOSES PER INSTRUMENT RECORDED NOVEMBER 4, 1985, AS DOCUMENT NO. 855112252, OFFICIAL RECORDS OF FRESNO COUNTY.
- ③ 5 FEET WIDE EASEMENT PREVIOUSLY DEEDED TO PACIFIC BELL FOR UNDERGROUND COMMUNICATION FACILITIES PURPOSES PER INSTRUMENT RECORDED MAY 1, 1987, AS DOCUMENT NO. 87053424, OFFICIAL RECORDS OF FRESNO COUNTY.
- ④ INDICATES EASEMENT PREVIOUSLY DEEDED TO PACIFIC GAS AND ELECTRICAL COMPANY FOR PUBLIC UTILITIES AND INCIDENTAL PURPOSES PER INSTRUMENT RECORDED AUGUST 3, 2006, AS DOCUMENT NO. 2006-0161563, OFFICIAL RECORDS OF FRESNO COUNTY.

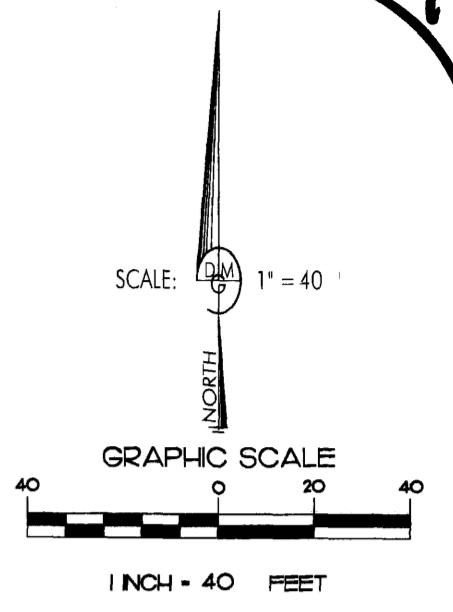
TRACT NO. 3885
VOLUME 46 OF PLATS, AT PAGES 7 & 8
FRESNO COUNTY RECORDS

TRACT NO. 3651
VOLUME 44 OF PLATS, AT PAGES 10 & 11
FRESNO COUNTY RECORDS

TRACT NO. 3651
VOLUME 44 OF PLATS, AT PAGES 10 & 11
FRESNO COUNTY RECORDS

FINAL MAP OF TRACT NO. 5356

IN THE CITY OF FRESNO
FRESNO COUNTY, CALIFORNIA
SURVEYED AND PLATTED IN NOVEMBER 2005
BY DALE MELL, PLS 4823
CONSISTING OF 2 SHEETS
SHEET 2 OF 2 SHEETS

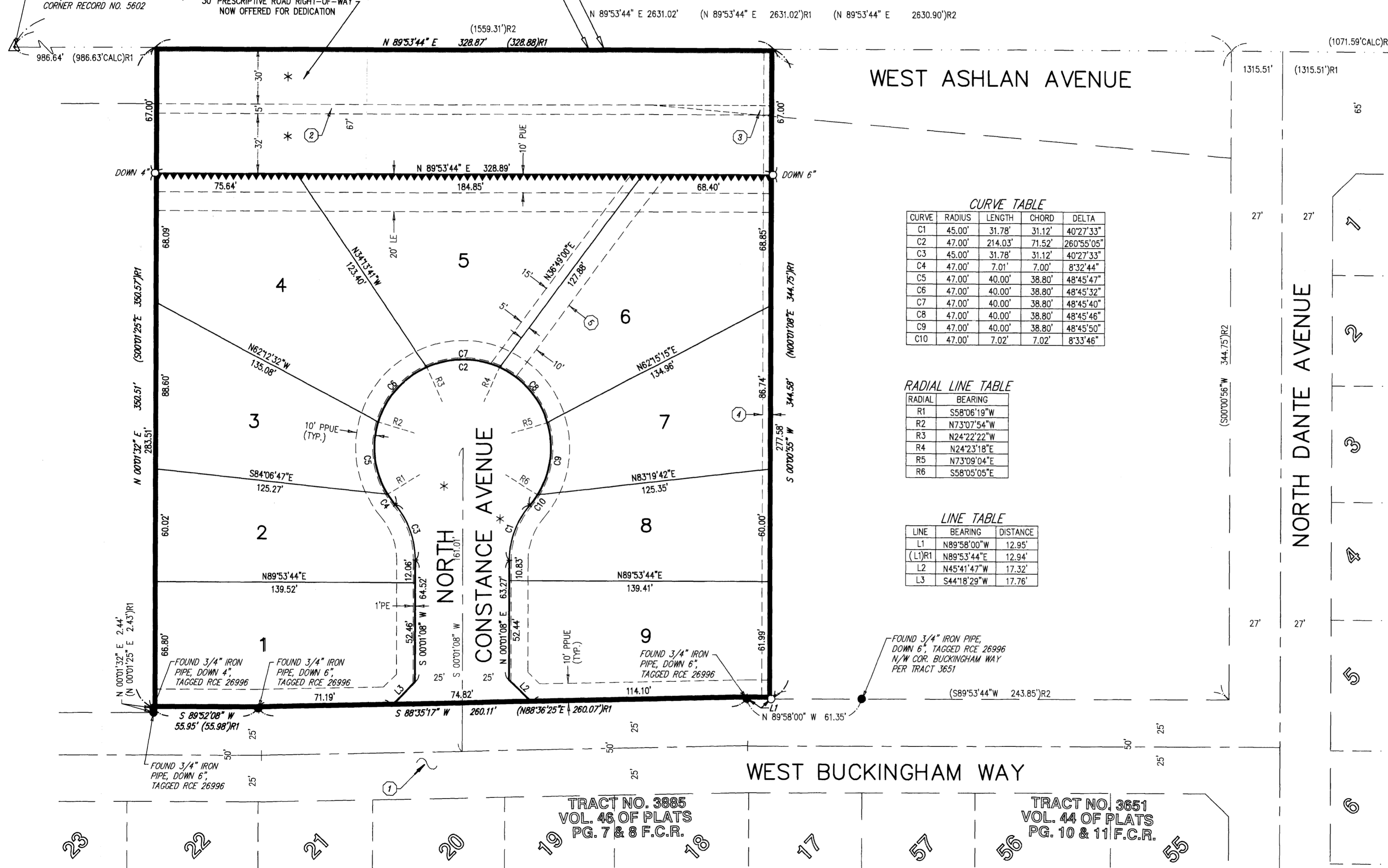


NORTH QUARTER CORNER SECTION 22, T. 13 S., R. 19 E., M.D.B.&M., POSITION FALLS ON MANHOLE CONFIRMED WITH TIES ON FILE WITH FRESNO COUNTY SURVEYOR, FOUND 2 TIES (NORTH & WEST) PK NAILS, TAGGED RCE 19789, CORNER RECORD NO. 5602

30' PRESCRIPTIVE ROAD RIGHT-OF-WAY NOW OFFERED FOR DEDICATION

BASIS OF BEARINGS
SECTION LINE

NORTHWEST CORNER SECTION 23, T. 13 S., R. 19 E., M.D.B.&M., POSITIONS FALLS ON MANHOLE CONFIRMED WITH TIES ON FILE WITH THE FRESNO COUNTY SURVEYOR CORNER RECORD NO. 6119



CURVE TABLE

CURVE	RADIUS	LENGTH	CHORD	DELTA
C1	45.00'	31.78'	31.12'	40°27'33"
C2	47.00'	214.03'	71.52'	260°55'05"
C3	45.00'	31.78'	31.12'	40°27'33"
C4	47.00'	7.01'	7.00'	8°32'44"
C5	47.00'	40.00'	38.80'	48°45'47"
C6	47.00'	40.00'	38.80'	48°45'32"
C7	47.00'	40.00'	38.80'	48°45'40"
C8	47.00'	40.00'	38.80'	48°45'46"
C9	47.00'	40.00'	38.80'	48°45'50"
C10	47.00'	7.02'	7.02'	8°33'46"

RADIAL LINE TABLE

RADIAL	BEARING
R1	S58°06'19"W
R2	N73°07'54"W
R3	N24°22'22"W
R4	N24°23'18"E
R5	N73°09'04"E
R6	S58°05'05"E

LINE TABLE

LINE	BEARING	DISTANCE
L1	N89°58'00"W	12.95'
(L1)R1	N89°53'44"E	12.94'
L2	N45°41'47"W	17.32'
L3	S44°18'29"W	17.76'

LEGEND

- △ SURVEY CONTROL CORNER FOUND AND ACCEPTED AS NOTED
- SET DURABLE 3/4" x 30" IRON PIPE TAGGED LS 4823, FLUSH OR AS NOTED PER CITY STD. DWG. P-36
- MONUMENTS FOUND AND ACCEPTED AS NOTED
- ▲▲▲ RELINQUISHMENT OF DIRECT ACCESS RIGHTS
- * INDICATES AREA NOW OFFERED FOR DEDICATION FOR PUBLIC STREET AND UTILITY PURPOSES.
- SUBDIVISION BOUNDARY
- CALC CALCULATED FROM RECORD DATA
- F.C.R. FRESNO COUNTY RECORDS
- O.R.F.C. OFFICIAL RECORDS FRESNO COUNTY
- ()R1 RECORD DATA PER TRACT NO. 3885, FILED IN VOLUME 46 OF PLATS AT PG'S 7 & 8, F.C.R.
- ()R2 RECORD DATA PER TRACT NO. 3651, FILED IN VOLUME 44 OF PLATS AT PG'S 10 & 11, F.C.R.
- LE INDICATES LANDSCAPE EASEMENT NOW OFFERED FOR DEDICATION FOR PUBLIC USE
- PPUE INDICATES PLANTING AND PUBLIC UTILITY EASEMENT NOW OFFERED FOR DEDICATION FOR PUBLIC USE
- PE INDICATES PEDESTRIAN EASEMENT NOW OFFERED FOR DEDICATION FOR PUBLIC USE
- PUE PUBLIC UTILITY EASEMENT NOW OFFERED FOR DEDICATION FOR PUBLIC USE
- ① INDICATES PREVIOUSLY DEDICATED FOR PUBLIC STREET PURPOSES PER TRACT 3885 RECORDED IN VOLUME 46 OF PLATS PG'S 7 & 8 F.C.R.
- ② INDICATES PREVIOUSLY DEEDED TO THE CITY OF FRESNO FOR PUBLIC STREET PURPOSES PER INSTRUMENT RECORDED AUGUST 5, 1992 DOCUMENT NO. 92109260, O.R.F.C.
- ③ INDICATES PREVIOUSLY DEEDED TO THE CITY OF FRESNO FOR PUBLIC STREET PURPOSES PER INSTRUMENT RECORDED NOVEMBER 4, 1985 DOCUMENT NO. 855112252, O.R.F.C.
- ④ 5' WIDE EASEMENT PREVIOUSLY DEEDED TO PACIFIC BELL FOR UNDERGROUND COMMUNICATION FACILITIES PURPOSES PER DEED RECORDED MAY 1, 1987, AS DOCUMENT NO. 87053424, O.R.F.C.
- ⑤ 15' WIDE EASEMENT PREVIOUSLY DEEDED TO FRESNO METROPOLITAN FLOOD CONTROL DISTRICT FOR STORM DRAIN PIPE PURPOSES PER DEED RECORDED 4-11-04, AS DOCUMENT NO. 2004-0075462, O.R.F.C.

NOTES

1. SET 3/4" BY 30" IRON PIPE, 6" BELOW SURFACE, TAGGED L.S. 4823, AT ALL LOT CORNERS, BEGINNING AND ENDING OF CURVES AND ANGLE POINT OF RIGHT OF WAY, UNLESS NOTED OTHERWISE.

BASIS OF BEARINGS

THE NORTH LINE OF THE NORTHEAST QUARTER OF SECTION 22, T. 13 S., R. 19 E., M.D.B. & M., IS TAKEN TO BE N 89°53'44" E AS SHOWN ON TRACT MAP NO. 3885, RECORDED IN VOLUME 46 OF PLATS AT PAGES 7 & 8, F.C.R.