



Prepared on Mon Oct 22 14:54:20 2018

# Street Names, Addresses and (Lot Numbers) for T5352

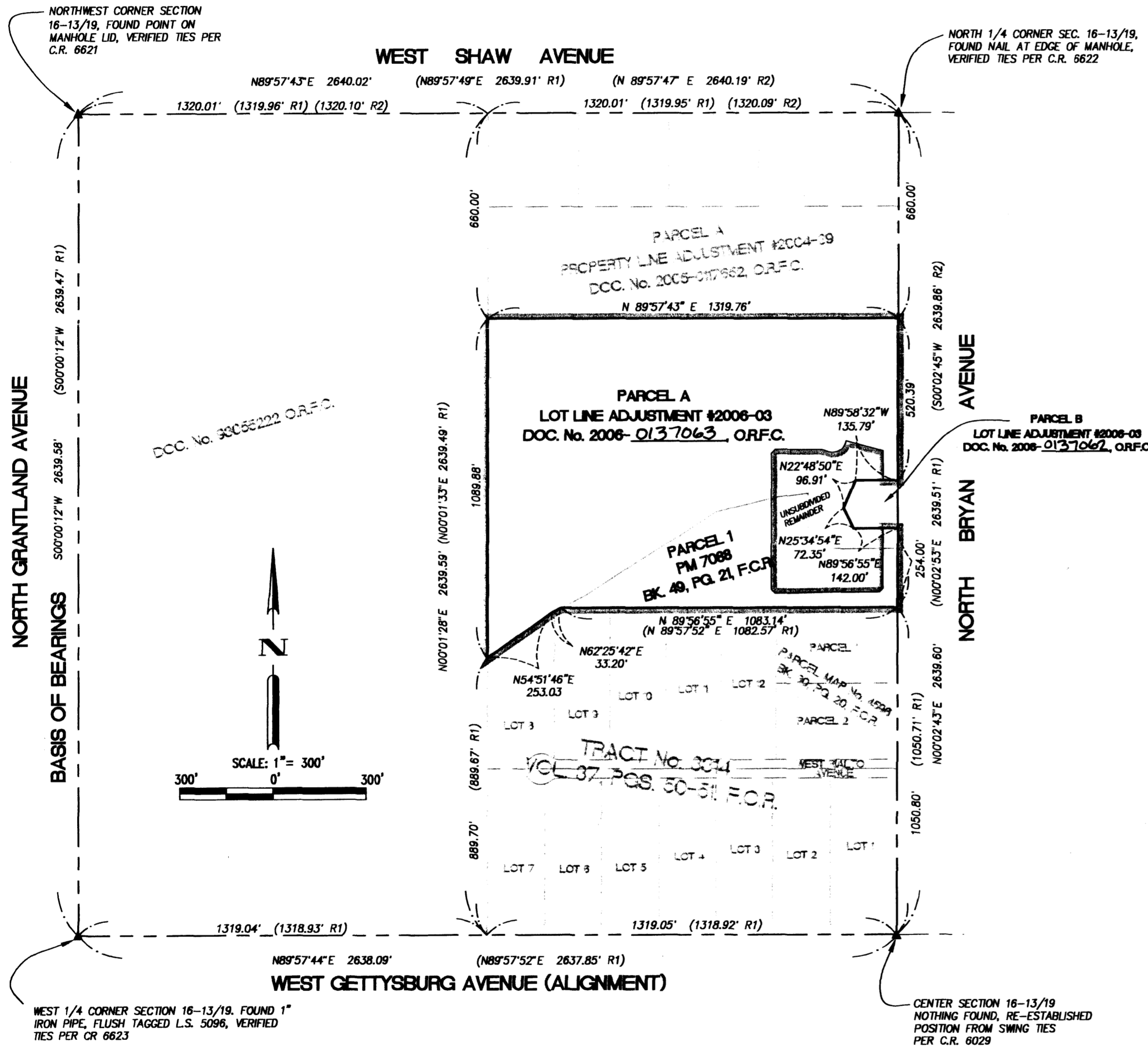


# FINAL MAP OF TRACT NO. 5352

PHASE I OF TENTATIVE MAP NO. 5352

## MAPLE RUN

IN THE CITY OF FRESNO, COUNTY OF FRESNO, STATE OF CALIFORNIA  
SURVEYED AND PLATTED IN MAY 2005 BY QUAD KNOPF INC.  
CONSISTING OF 4 SHEETS  
SHEET 2 OF 4



### LEGEND

- ▲ MONUMENT FOUND AND ACCEPTED AS DESCRIBED
- R1 RECORD DATA PER TRACT MAP No. 3314 RECORDED IN VOLUME 37 OF PLATS AT PAGES 50 AND 51, FRESNO COUNTY RECORDS, OR CALCULATED THEREFROM.
- R2 RECORD DATA PER PARCEL MAP No. 7088 RECORDED IN BOOK 49 OF PARCEL MAPS, AT PAGE 21, FRESNO COUNTY RECORDS, OR CALCULATED THEREFROM.
- F.C.R. FRESNO COUNTY RECORDS
- O.R.F.C. OFFICIAL RECORDS OF FRESNO COUNTY
- C.R. CORNER RECORD ON FILE WITH THE FRESNO COUNTY SURVEYOR
- BLUE BORDER INDICATES LIMITS OF SUBDIVISION

LINE TABLE		
LINE	BEARING	LENGTH
L1	N60°01'23"E	12.68
L2	N62°25'42"E	33.20
(L2 R1)	N62°24'13"E	33.74
L3	N89°56'55"E	15.72
L4	N00°01'28"E	16.86
L5	N45°01'28"E	17.46
L6	N44°38'09"W	17.38
L7	N00°01'28"E	43.78
L8	N44°58'57"E	17.46
L9	N89°57'43"E	8.54
L10	N89°57'43"E	10.65
L11	N44°59'47"W	17.45
L12	N45°02'05"E	17.46
L13	N44°59'37"W	17.46
L14	N45°01'28"E	17.46
L15	N45°00'02"W	17.46
L16	N45°01'28"E	17.46
L17	N44°58'32"W	18.87
L18	N45°01'32"E	17.46
L19	N00°01'28"E	5.58
L20	N00°01'28"E	5.58
L21	N45°36'40"W	17.26
L22	N44°59'11"E	18.88
L23	N45°00'49"W	17.45
L24	N44°15'27"E	16.48
L25	N45°00'13"E	17.46
L26	N44°59'47"W	16.53
L27	N45°00'12"E	16.53
L28	N89°56'55"E	20.00
L29	N89°58'32"W	11.52
L30	N89°56'55"E	20.00
L31	N89°56'55"E	34.39
L32	N44°57'55"W	14.14
L33	N45°00'25"W	14.13
L34	N00°01'28"E	20.67
L35	N00°02'43"E	9.60
L36	N45°00'11"E	17.44
L37	N17°57'06"W	56.75
L38	N46°57'14"E	20.00
L39	N45°01'28"E	17.46
L40	N44°57'55"W	17.45
L41	N44°24'18"E	17.65
L42	N44°58'32"W	17.46
L43	N45°02'05"W	28.29
L44	N89°56'55"E	22.97
L45	N00°01'28"E	40.52
L46	N00°01'28"E	40.50

RADIAL TABLE		
LINE	BEARING	
R1	N29°58'37"W	
R2	N29°58'37"W	
R3	N89°58'32"W	
R4	N89°58'32"W	
R5	N63°54'27"W	
R6	N86°21'05"W	
R7	N86°21'05"W	
R8	N89°58'32"W	
R9	N89°58'32"W	
R10	N89°58'32"W	
R11	S67°42'59"W	
R12	S65°19'01"E	
R13	S08°01'16"E	
R14	N32°35'56"E	
R15	N00°02'17"W	
R16	N89°58'32"W	
R17	N89°58'32"W	
R18	N47°26'20"W	
R19	S78°39'59"E	
R20	N11°33'41"E	
R21	N11°30'46"W	
R22	S78°42'54"W	
R23	S47°29'15"W	
R24	S00°01'28"W	
R25	N27°17'25"E	
R26	S62°46'45"W	
R27	N86°36'04"E	
R28	S89°57'17"E	
R29	S71°55'58"E	
R30	N00°02'17"W	
R31	N07°44'19"W	
R32	S11°30'59"E	
R33	S00°57'18"E	
R34	S00°02'17"E	
R35	N00°02'17"W	
R36	S07°17'25"E	
R37	S00°02'17"E	
R38	N00°02'17"W	
R39	N07°41'19"W	
R40	S08°55'24"E	
R41	S00°02'17"E	
R42	N57°23'15"E	
R43	S89°58'32"E	
R44	N23°42'24"E	
R45	S80°39'07"E	
R46	N33°16'44"W	
R47	S12°57'11"W	

CURVE TABLE			
CURVE	DELTA	RADIUS	LENGTH
C1	59°59'55"	25.00	26.18
C2	33°55'50"	75.00	44.41
C3	26°04'05"	75.00	34.12
C4	59°59'55"	75.00	78.54
C5	59°59'55"	50.00	52.36
C6	0°04'19"	1025.00	1.29
C7	3°37'27"	1025.00	64.83
C8	0°05'04"	1025.00	1.51
C9	3°37'27"	975.00	61.67
C10	0°04'01"	975.00	1.14
C11	3°37'27"	1000.00	63.25
C12	3°37'27"	1000.00	63.25
C13	2°38'35"	975.00	44.98
C14	2°23'20"	1025.00	42.74
C15	1°14'07"	1025.00	22.10
C16	3°37'27"	1025.00	64.83
C17	2°21'29"	45.00	17.52
C18	10°19'44"	45.00	8.11
C19	32°38'13"	45.00	25.63
C20	57°17'44"	50.00	50.00
C21	57°17'45"	50.00	50.00
C22	40°37'12"	50.00	35.45
C23	32°38'13"	45.00	25.63
C24	15°12'41"	50.00	135.45
C25	7°42'02"	250.00	33.60
C26	3°46'40"	250.00	16.48
C27	1°28'42"	250.00	50.08
C28	10°33'41"	250.00	46.08
C29	0°55'01"	250.00	4.00
C30	11°28'42"	250.00	50.08
C31	7°15'08"	500.00	63.29
C32	7°15'08"	500.00	63.29
C33	7°39'02"	250.00	33.38
C34	1°14'05"	250.00	5.39
C35	8°53'07"	250.00	38.77
C36	8°53'07"	250.00	38.77
C37	3°26'39"	45.00	2.71
C38	2°49'19"	45.00	18.71
C39	27°15'58"	45.00	21.41
C40	36°34'08"	45.00	28.72
C41	10°7'56'32"	45.00	84.78
C42	46°13'55"	50.00	40.34
C43	27°15'57"	45.00	21.41
C44	42°32'13"	45.00	33.41
C45	31°13'39"	50.00	27.25
C46	89°46'20"	50.00	78.34
C47	23°04'27"	50.00	20.14
C48	89°46'20"	50.00	78.34
C49	31°13'39"	50.00	27.25
C50	42°32'12"	45.00	33.41
C51	26°5'04'25"	50.00	231.32
C52	66°19'04"	59.00	68.29
C53	14°30'40"	45.00	113.50
C54	03°28'04"	1025.00	62.04
C55	03°33'26"	975.00	60.53
C56	19°42'29"	50.00	17.20
C57	35°01'18"	45.00	27.51
C58	43°05'29"	45.00	33.84
C59	90°01'15"	45.00	70.70

**BASIS OF BEARINGS**  
THE WEST LINE OF THE NORTHWEST QUARTER OF SECTION 16, TOWNSHIP 13 SOUTH, RANGE 19 EAST, MOUNT DIABLO BASE AND MERIDIAN, SHOWN TO BEAR SOUTH 00°00'12" WEST, PER TRACT MAP NO. 3314 RECORDED IN VOLUME 37 OF PLATS, AT PAGES 50 AND 51, FRESNO COUNTY RECORDS.

# FINAL MAP OF TRACT NO. 5352

PHASE 1 OF TENTATIVE MAP NO. 5352

MAPLE RUN

IN THE CITY OF FRESNO, COUNTY OF FRESNO, STATE OF CALIFORNIA  
 SURVEYED AND PLATTED IN MAY 2005 BY QUAD KNOPF INC.  
 CONSISTING OF 4 SHEETS  
 SHEET 3 OF 4

NOTES:  
 1. SET 3/4" BY 30" IRON PIPE, 6" BELOW SURFACE, TAGGED PLS 7985, AT ALL LOT CORNERS, BEGINNING AND ENDING OF CURVES, AND ANGLE POINTS OF RIGHT OF WAY, UNLESS NOTED OTHERWISE.

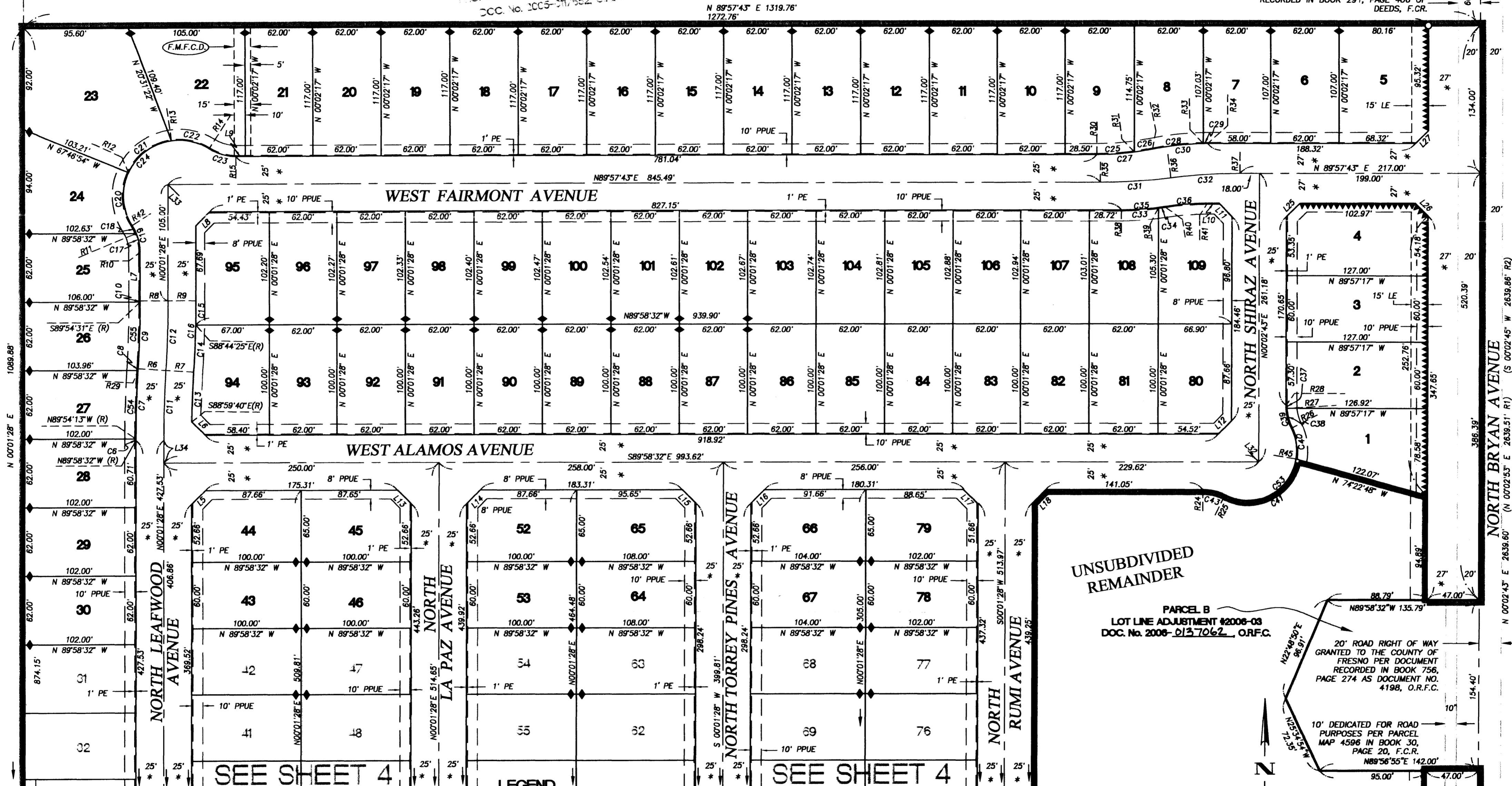
NORTHWEST CORNER SECTION 16-13/19, FOUND POINT ON MANHOLE LID, VERIFIED TIES PER C.R. 6621

NORTH 1/4 CORNER SEC. 16-13/19, FOUND NAIL AT EDGE OF MANHOLE, VERIFIED TIES PER C.R. 6622

WEST SHAW AVENUE

20' ROAD RIGHT OF WAY GRANTED TO THE COUNTY OF FRESNO PER DOCUMENT RECORDED IN BOOK 291, PAGE 406 OF DEEDS, F.C.R.

PARCEL A  
 PROPERTY LINE ADJUSTMENT #2004-39  
 DOC. No. 2005-017852, O.R.F.C.



▲ MONUMENT FOUND AND ACCEPTED AS DESCRIBED  
 (R) RADIAL BEARING  
 O.R.F.C. OFFICIAL RECORDS OF FRESNO COUNTY  
 F.C.R. FRESNO COUNTY RECORDS  
 BLUE BORDER INDICATES LIMITS OF SUBDIVISION  
 PE PEDESTRIAN EASEMENT

◆ SET WITNESS CORNER 3/4" X 30" IRON PIPE, DOWN 6", TAGGED PLS 7985 ON LOT LINE AS SHOWN AT 3.00' OFFSET FROM NEAREST LOT CORNER. (DISTANCES SHOWN ARE TO TRUE CORNER) PER CITY OF FRESNO PUBLIC WORKS STANDARD P-38  
 \* INDICATES AREA NOW OFFERED FOR DEDICATION FOR PUBLIC STREET AND UTILITY PURPOSES  
 ○ SET 3/4" IRON PIPE, 30' LONG, 4" UP IN P.C.C. 6" DIA. MONUMENT TAGGED PLS 7985

▲▲▲▲▲ RELINQUISHMENT OF DIRECT ACCESS RIGHTS  
 LE LANDSCAPE EASEMENT NOW OFFERED FOR DEDICATION FOR PUBLIC USE  
 R1 RECORD DATA PER TRACT MAP No. 3314 RECORDED IN VOLUME 37 OF PLATS AT PAGES 50 AND 51, FRESNO COUNTY RECORDS, OR CALCULATED THEREFROM.

PPUE PLANTING AND PUBLIC UTILITY EASEMENT NOW OFFERED FOR DEDICATION FOR PUBLIC USE  
 R2 RECORD DATA PER PARCEL MAP No. 7088 RECORDED IN BOOK 49 OF PARCEL MAPS, AT PAGE 21, FRESNO COUNTY RECORDS, OR CALCULATED THEREFROM.  
 (F.M.F.C.D.) 15' EASEMENT DEDICATED TO FRESNO METROPOLITAN FLOOD CONTROL DISTRICT FOR STORM DRAIN PURPOSES, PER DOCUMENT 2006-0212142, O.R.F.C.

SCALE: 1" = 60'  
 CENTER SECTION 16-13/19 NOTHING FOUND, RE-ESTABLISHED POSITION FROM SWING TIES POINT PER C.R. 6029

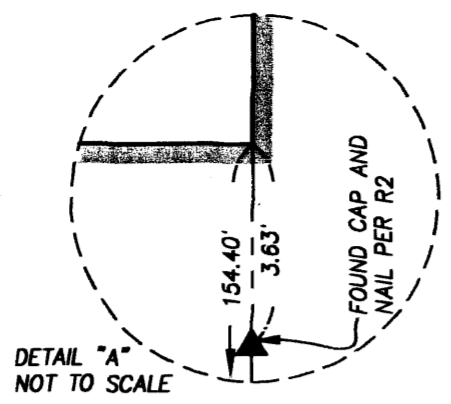
61

# FINAL MAP OF TRACT NO. 5352

PHASE 1 OF TENTATIVE MAP NO. 5352

## MAPLE RUN

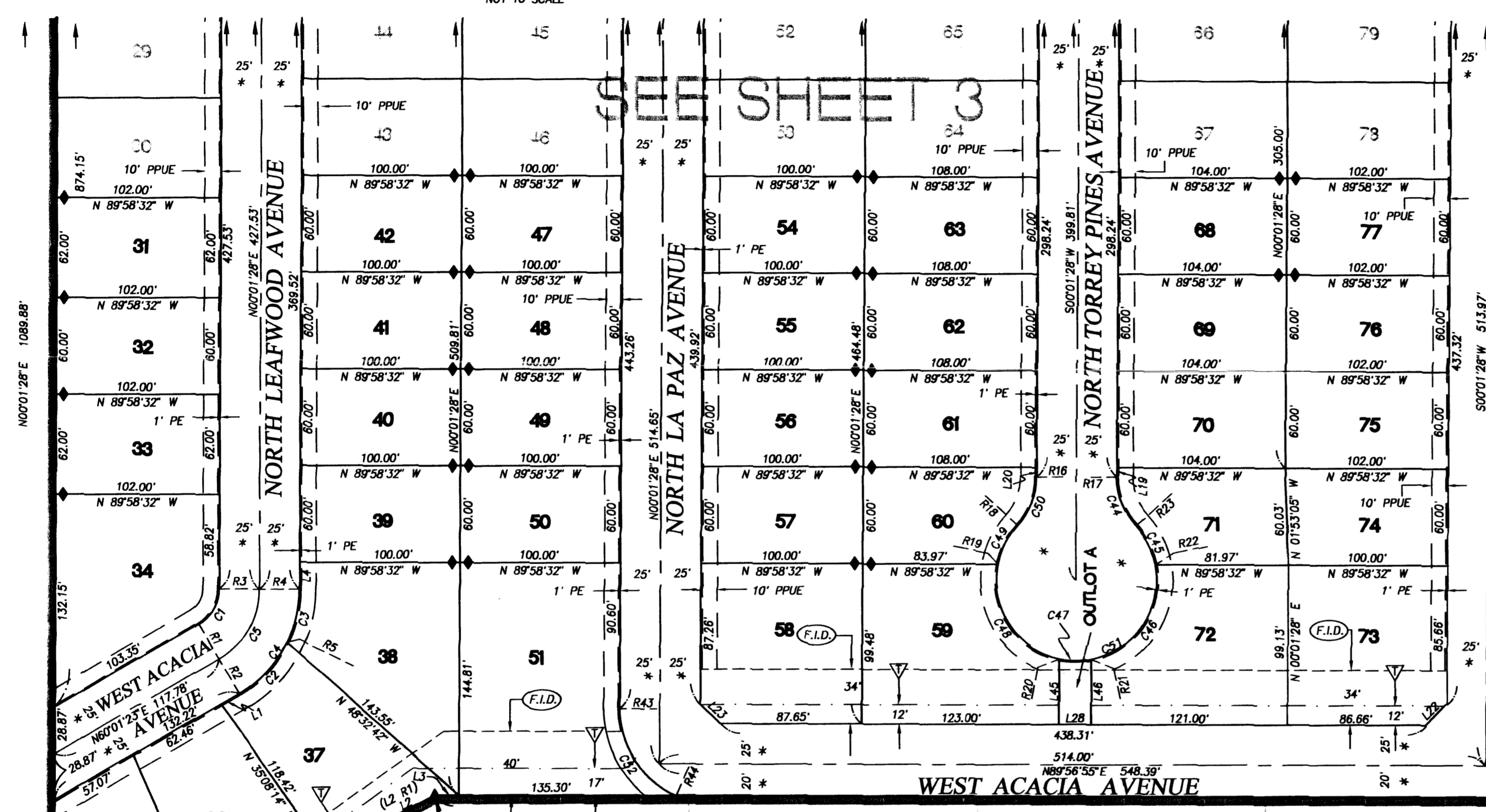
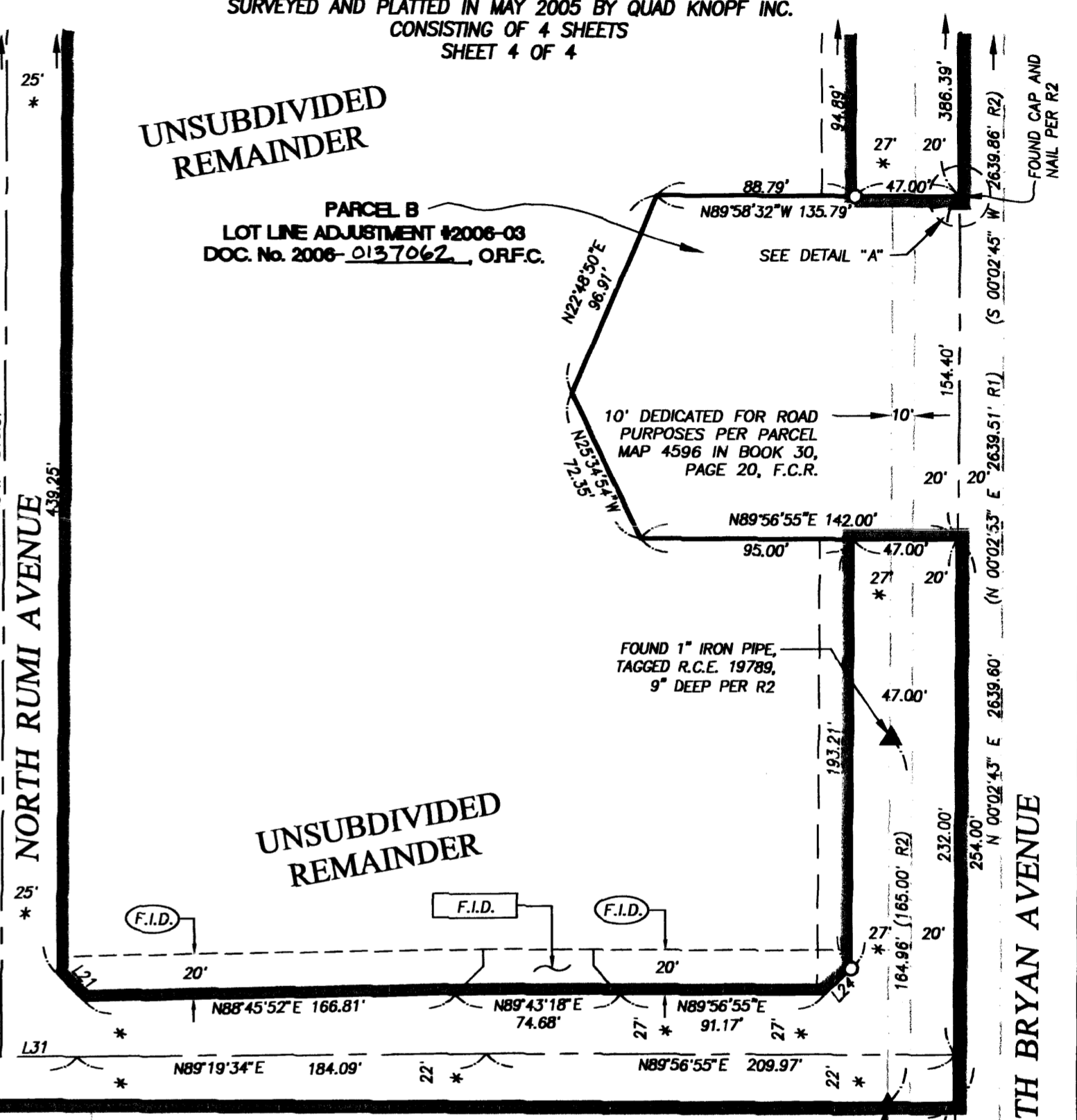
IN THE CITY OF FRESNO, COUNTY OF FRESNO, STATE OF CALIFORNIA  
SURVEYED AND PLATTED IN MAY 2005 BY QUAD KNOPF INC.  
CONSISTING OF 4 SHEETS  
SHEET 4 OF 4



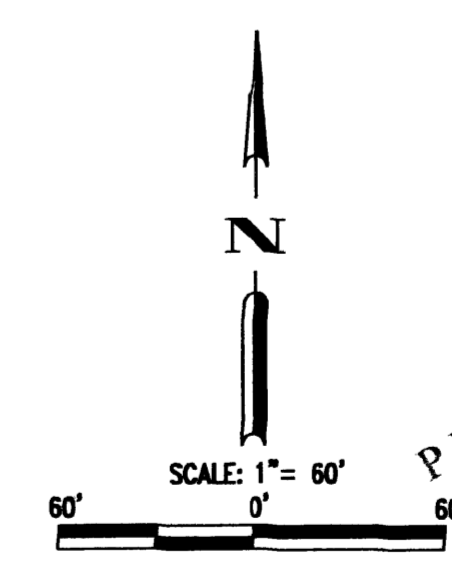
NOTES:  
OUTLOT A NOW OFFERED FOR DEDICATION TO THE CITY OF FRESNO FOR PEDESTRIAN ACCESS PURPOSES

NOTES:  
1. SET 3/4" BY 30" IRON PIPE, 6" BELOW SURFACE, TAGGED PLS 7985, AT ALL LOT CORNERS, BEGINNING AND ENDING OF CURVES, AND ANGLE POINTS OF RIGHT OF WAY, UNLESS NOTED OTHERWISE.

UNSUBDIVIDED REMAINDER



TRACT 3314  
VOL. 37 OF PLATS,  
PGS. 50 & 51, F.C.R.



FOUND 1" IRON PIPE, 9" DEEP, TAGGED RCE 19789 PER R2, 0.08' WEST OF TRUE POSITION USED TO CONTROL SOUTH LINE OF PARCEL 1, P.M. NO. 7088  
PARCEL 2  
P.M. 4596, BK. 30, PG. 20, F.C.R.

### WEST GETTYSBURG AVENUE (ALIGNMENT)

#### LEGEND

- ▲ MONUMENT FOUND AND ACCEPTED AS DESCRIBED
- SET 3/4" IRON PIPE, 30" LONG, 4" UP IN P.C.C. 6" DIA. MONUMENT TAGGED PLS 7985
- (R) RADIAL BEARING
- F.C.R. FRESNO COUNTY RECORDS
- O.R.F.C. OFFICIAL RECORDS OF FRESNO COUNTY
- PE PEDESTRIAN EASEMENT
- \* INDICATES AREA NOW OFFERED FOR DEDICATION FOR PUBLIC STREET AND UTILITY PURPOSES
- PPUE PLANTING AND PUBLIC UTILITY EASEMENT NOW OFFERED FOR DEDICATION FOR PUBLIC USE
- LE LANDSCAPE EASEMENT NOW OFFERED FOR DEDICATION FOR PUBLIC USE
- R1 RECORD DATA PER TRACT MAP No. 3314 RECORDED IN VOLUME 37 OF PLATS AT PAGES 50 AND 51, FRESNO COUNTY RECORDS, OR CALCULATED THEREFROM.
- R2 RECORD DATA PER PARCEL MAP No. 7088 RECORDED IN BOOK 49 OF PARCEL MAPS, AT PAGE 21, FRESNO COUNTY RECORDS, OR CALCULATED THEREFROM.
- (F.I.D.) INDICATES COMMON USE AGREEMENT FOR TRAIL PURPOSES PER DOCUMENT NO. 2006-0010856, O.R.F.C., AND TO THE FRESNO IRRIGATION DISTRICT FOR IRRIGATION PIPELINE PURPOSES PER DOCUMENT NO. 2005-0287665, O.R.F.C.
- ◆ SET WITNESS CORNER 3/4" X 30" IRON PIPE, DOWN 6", TAGGED PLS 7985 ON LOT LINE AS SHOWN AT 3.00' OFFSET FROM NEAREST LOT CORNER. (DISTANCES SHOWN ARE TO TRUE CORNER)
- (F.I.D.) EASEMENT GRANTED TO THE FRESNO IRRIGATION DISTRICT FOR IRRIGATION PIPELINE PURPOSES, RECORDED MAY 31, 2006 AS DOCUMENT NO. 2006-0113706, O.R.F.C.
- ▽ PEDESTRIAN TRAIL EASEMENT NOW OFFERED FOR DEDICATION FOR PUBLIC USE
- CENTER SECTION 16-13/19 NOTHING FOUND, RE-ESTABLISHED POSITION FROM SWING TIES PER C.R. 6029