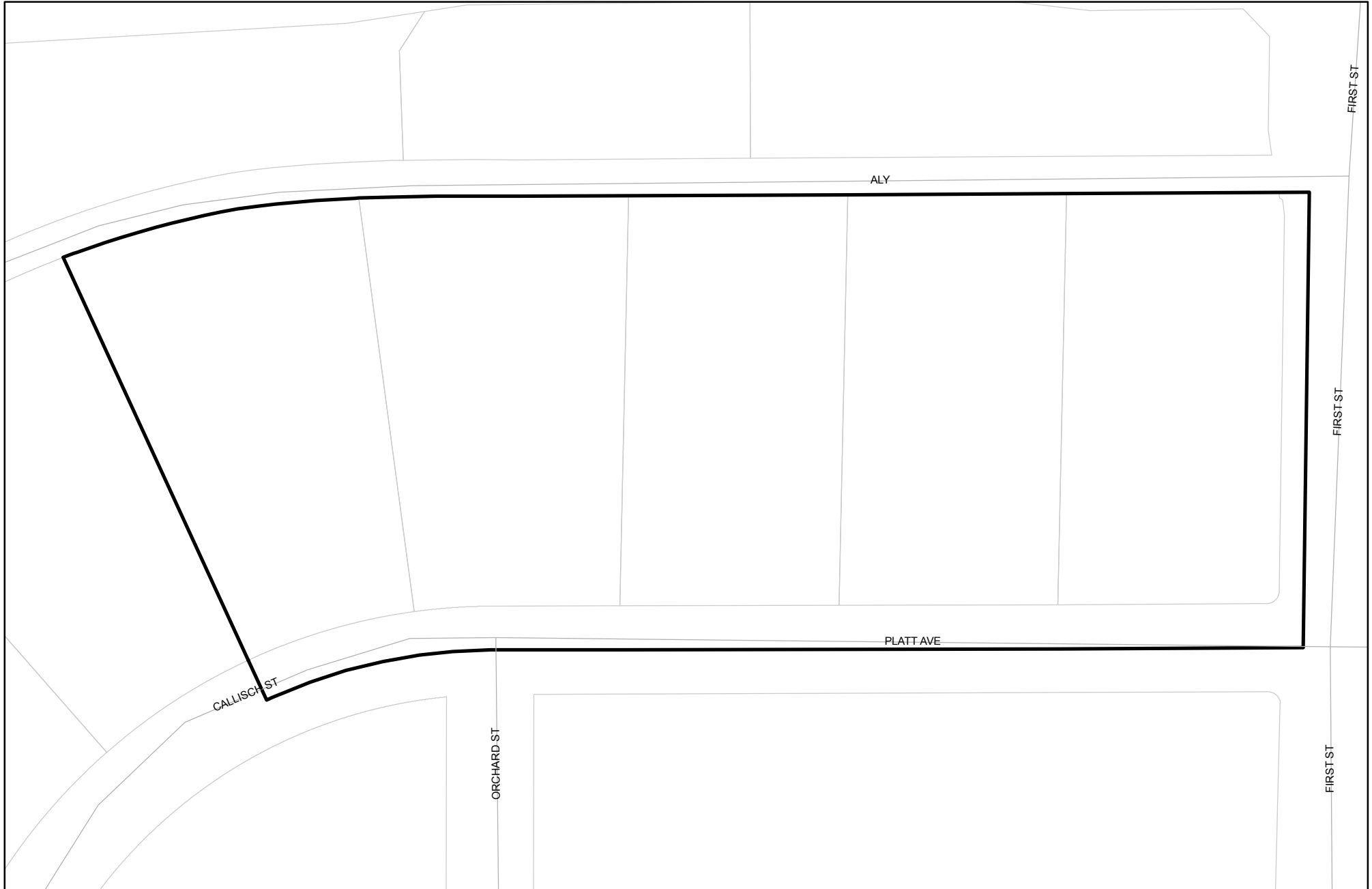


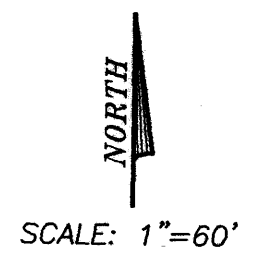


Prepared on Mon Oct 22 14:58:06 2018

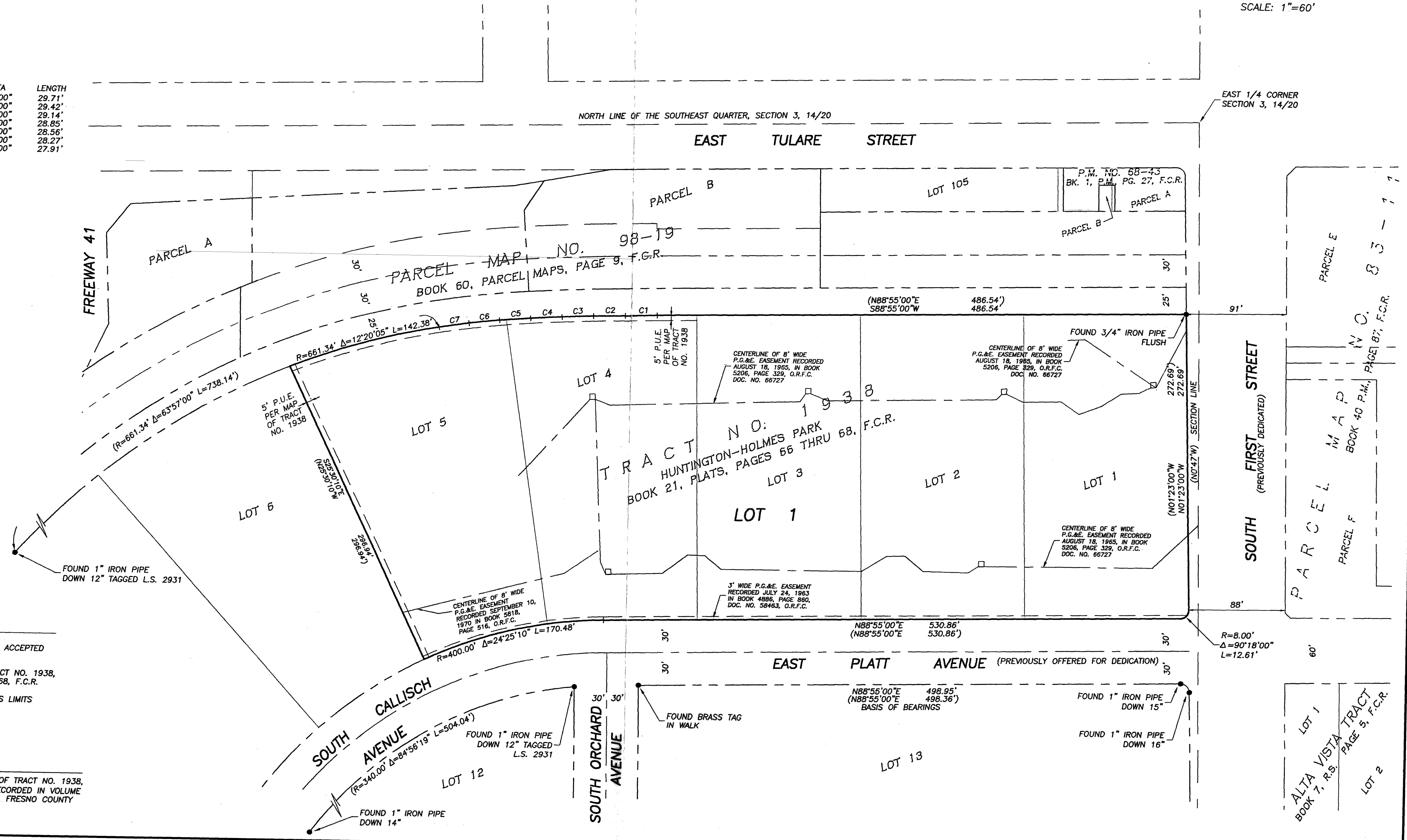
Street Names, Addresses and (Lot Numbers) for T5342



FINAL MAP OF
TRACT NO. 5342
 FOR CONDOMINIUM PURPOSES
 SHEET TWO OF TWO SHEETS
 IN THE CITY OF FRESNO, FRESNO COUNTY, CALIFORNIA
 SURVEYED JANUARY, 2003 BY RABE ENGINEERING INC.
 CIVIL ENGINEERS—LAND SURVEYORS 2021 N. GATEWAY BLVD., FRESNO CALIFORNIA 93727
 (559) 252-7223



CURVE	RADIUS	DELTA	LENGTH
C1	5674.58'	00°18'00"	29.71'
C2	2809.80'	00°36'00"	29.42'
C3	1854.88'	00°54'00"	29.14'
C4	1377.42'	01°12'00"	28.85'
C5	1090.95'	01°30'00"	28.56'
C6	899.97'	01°48'00"	28.27'
C7	763.56'	02°06'00"	27.91'



LEGEND

- MONUMENT FOUND AND ACCEPTED AS NOTED
- () RECORD DATA PER TRACT NO. 1938, VOL. 21, PGS. 66 TO 68, F.C.R.
- BLUE BORDER INDICATES LIMITS OF THIS SUBDIVISION.

BASIS OF BEARINGS
 THE NORTH LINE OF LOT 13, MAP OF TRACT NO. 1938, "HUNTINGTON-HOLMES PARK" AS RECORDED IN VOLUME 21 OF PLATS, AT PAGES 66 TO 68, FRESNO COUNTY RECORDS. TAKEN AS N88°55'00"E