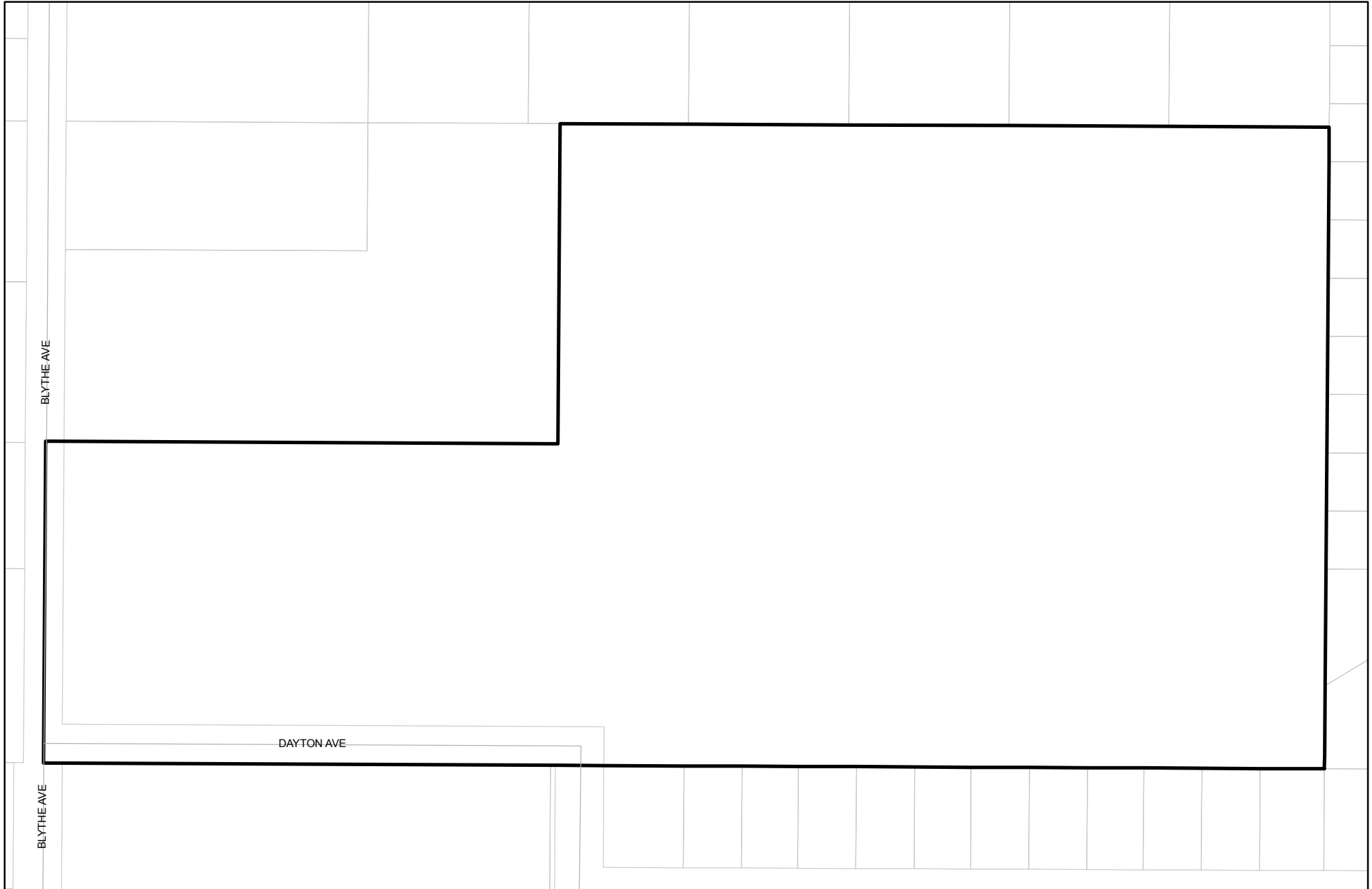




Prepared on Tue Apr 02 14:02:00 2013

Street Names, Addresses and (Lot Numbers) for T5326

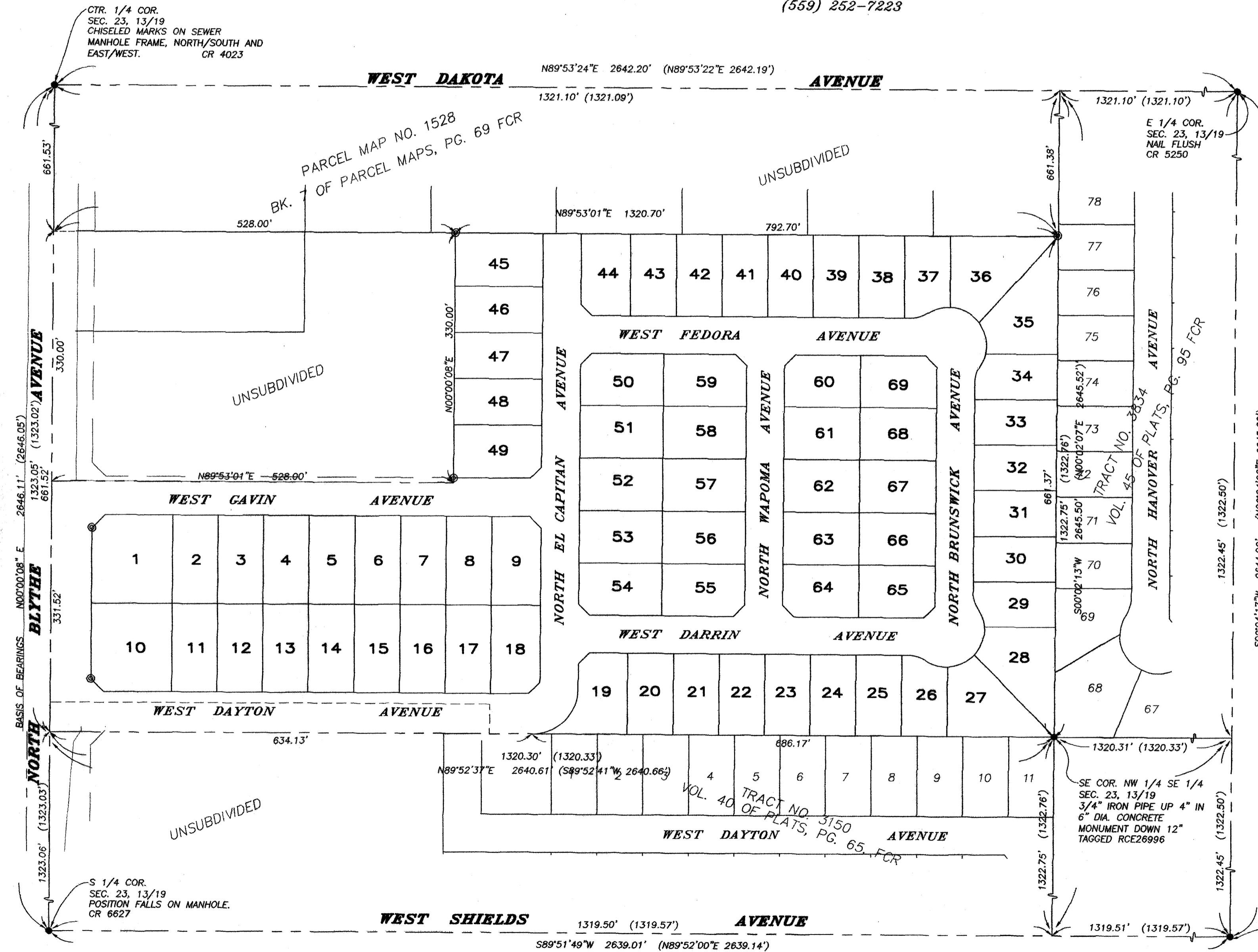


FINAL MAP OF TRACT NO. 5326

CONSISTING OF 3 SHEETS
SHEET 2 OF 3 SHEETS

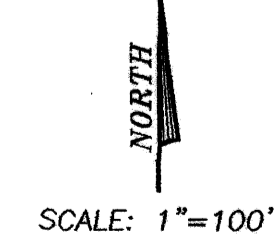
IN THE CITY OF FRESNO, FRESNO COUNTY, CALIFORNIA
SURVEYED & PLATTED JUNE, 2005 BY RABE ENGINEERING INC.

CIVIL ENGINEERS—LAND SURVEYORS 2021 N. GATEWAY BLVD., FRESNO CALIFORNIA 93727
(559) 252-7223



- LEGEND**
- MONUMENT FOUND AND ACCEPTED AS NOTED
 - ⊙ SET 1" O.D. 30" LONG IP UP 4" IN 6" DIA. X 30" CONCRETE MONUMENT DOWN 6" TAGGED PLS 4699.
 - ALL LOT CORNERS, ANGLE POINTS AND CURVE POINTS ARE MARKED WITH 3/4"x30" IRON PIPE TAGGED PLS 4699, FLUSH.
 - () RECORD DATA PER TRACT NO. 3834, VOLUME 45 OF PLATS, PAGES 95 & 96, FRESNO COUNTY RECORDS
 - BLUE BORDER INDICATES LIMITS OF THIS SUBDIVISION
 - PROPOSED PROPERTY LINE
 - EXISTING PROPERTY LINE
 - ▲▲▲ INDICATES RELINQUISHMENT OF DIRECT ACCESS
 - △ INDICATES AREA OFFERED FOR DEDICATION FOR PUBLIC STREET PURPOSES
 - LPUE LANDSCAPE AND PUBLIC UTILITY EASEMENT OFFERED FOR DEDICATION FOR PUBLIC USE
 - CR CORNER RECORD ON FILE WITH FRESNO COUNTY SURVEYOR

BASIS OF BEARINGS:
THE WEST LINE OF THE SOUTHEAST QUARTER OF SECTION 23, TOWNSHIP 13 SOUTH, RANGE 19 EAST, MOUNT DIABLO BASE AND MERIDIAN ACCORDING TO THE MAP OF TRACT NO. 3834 RECORDED IN VOLUME 45 OF PLATS AT PAGES 95 AND 96, FRESNO COUNTY RECORDS, TAKEN TO BE N00°00'08"E.



FINAL MAP OF TRACT NO. 5326

CONSISTING OF 3 SHEETS
SHEET 3 OF 3 SHEETS

IN THE CITY OF FRESNO, FRESNO COUNTY, CALIFORNIA
SURVEYED & PLATTED JUNE, 2005 BY RABE ENGINEERING INC.

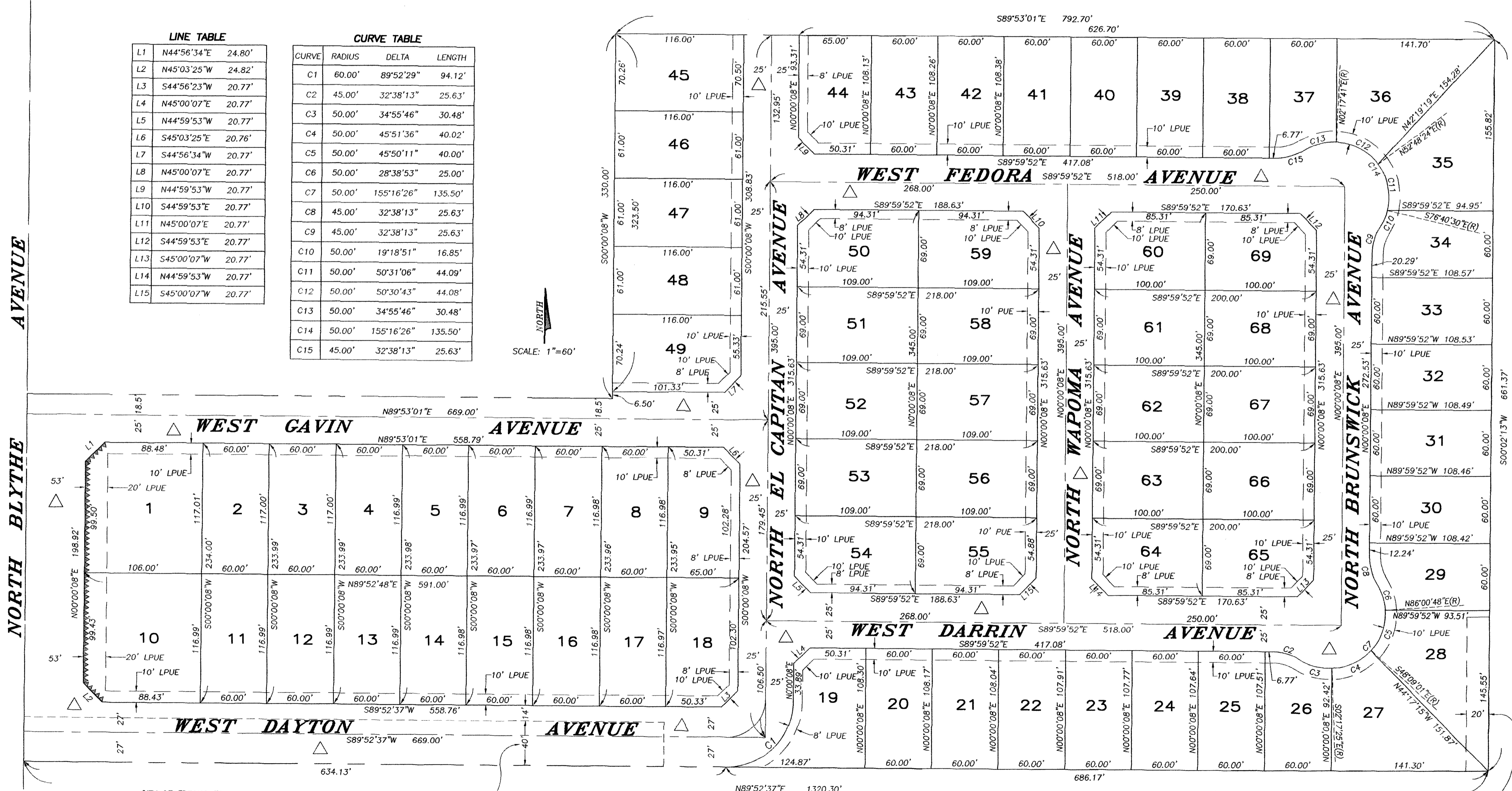
CIVIL ENGINEERS—LAND SURVEYORS 2021 N. GATEWAY BLVD., FRESNO CALIFORNIA 93727
(559) 252-7223

SEE SHEET 2 FOR BASIS OF BEARINGS, LEGEND AND FOUND MONUMENT DESCRIPTIONS

LINE TABLE		
L1	N44°56'34"E	24.80'
L2	N45°03'25"W	24.82'
L3	S44°56'23"W	20.77'
L4	N45°00'07"E	20.77'
L5	N44°59'53"W	20.77'
L6	S45°03'25"E	20.76'
L7	S44°56'34"W	20.77'
L8	N45°00'07"E	20.77'
L9	N44°59'53"W	20.77'
L10	S44°59'53"E	20.77'
L11	N45°00'07"E	20.77'
L12	S44°59'53"E	20.77'
L13	S45°00'07"W	20.77'
L14	N44°59'53"W	20.77'
L15	S45°00'07"W	20.77'

CURVE TABLE			
CURVE	RADIUS	DELTA	LENGTH
C1	60.00'	89°52'29"	94.12'
C2	45.00'	32°38'13"	25.63'
C3	50.00'	34°55'46"	30.48'
C4	50.00'	45°51'36"	40.02'
C5	50.00'	45°50'11"	40.00'
C6	50.00'	28°38'53"	25.00'
C7	50.00'	155°16'26"	135.50'
C8	45.00'	32°38'13"	25.63'
C9	45.00'	32°38'13"	25.63'
C10	50.00'	19°18'51"	16.85'
C11	50.00'	50°31'06"	44.09'
C12	50.00'	50°30'43"	44.08'
C13	50.00'	34°55'46"	30.48'
C14	50.00'	155°16'26"	135.50'
C15	45.00'	32°38'13"	25.63'

NORTH
SCALE: 1"=60'



CITY OF FRESNO EASEMENT AND RIGHT OF WAY FOR PUBLIC STREET PURPOSES,
DOCUMENT NO. 83060656, OFFICIAL RECORDS FRESNO COUNTY

20' FRESNO IRRIGATION DISTRICT EASEMENT
DOCUMENT NO. 83064600, OFFICIAL RECORDS FRESNO COUNTY