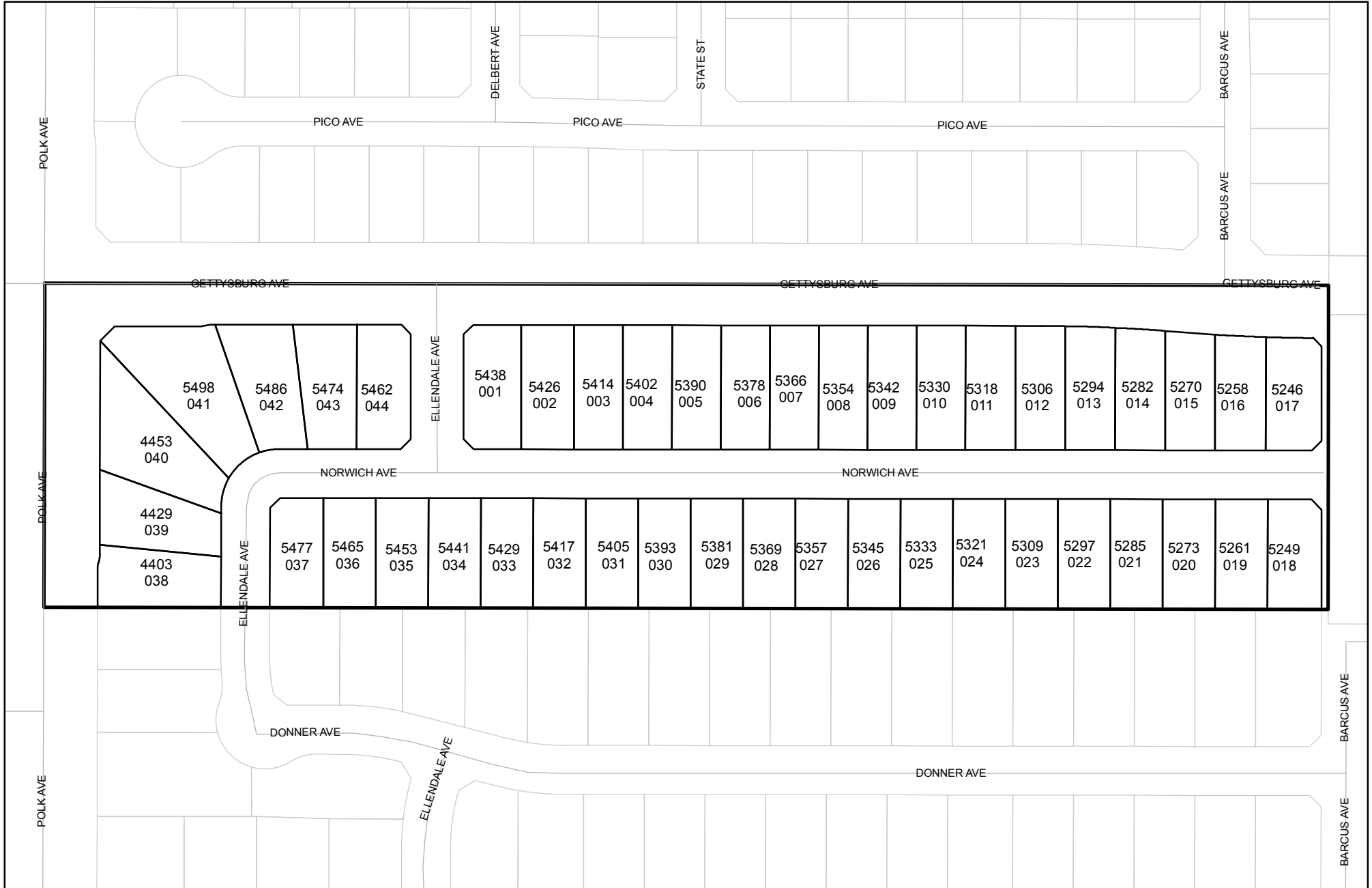


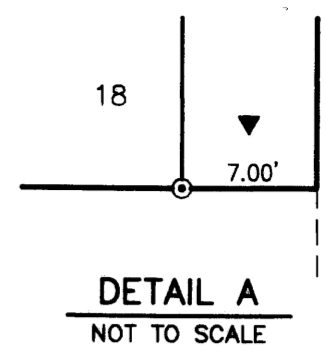


Prepared on Wed Dec 14 21:52:52 2016

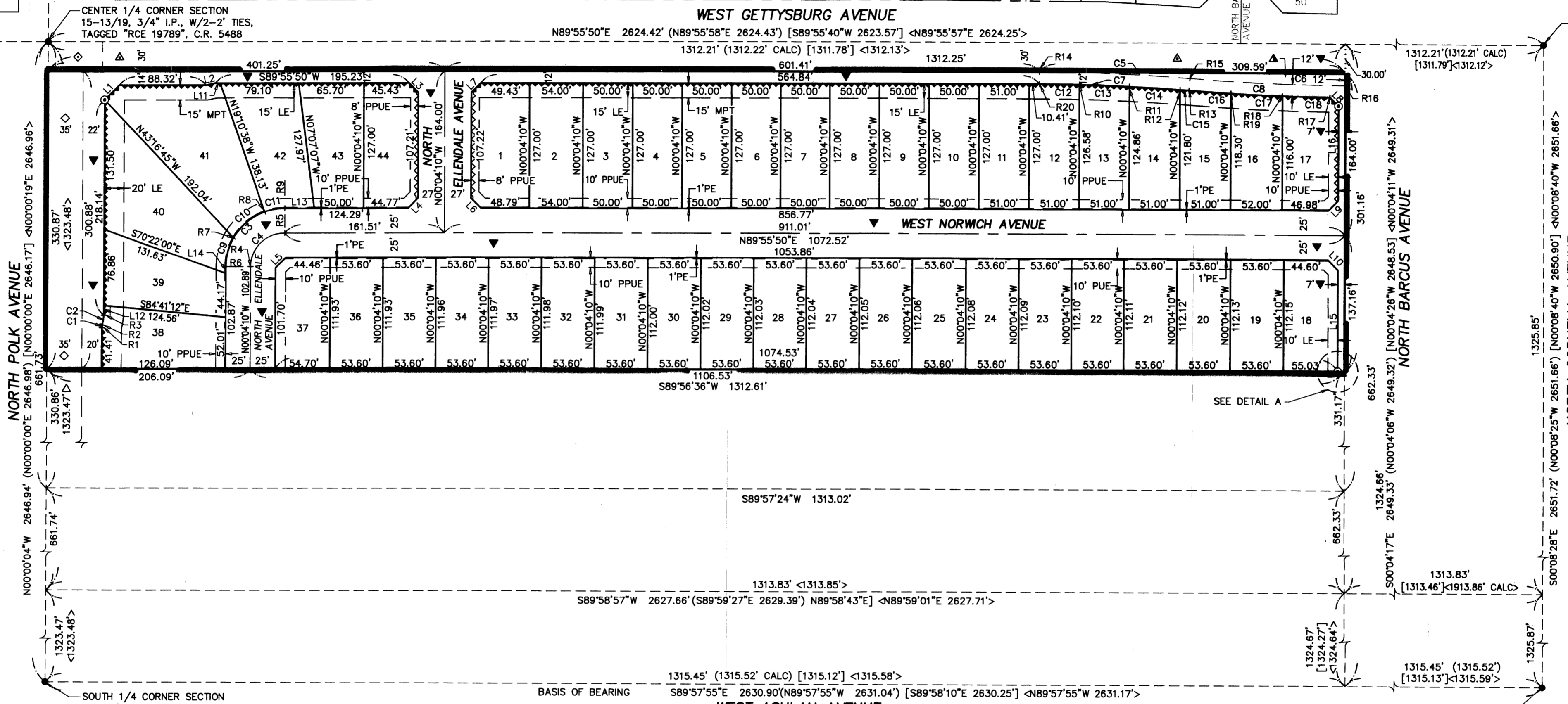
Street Names, Addresses and (Lot Numbers) for T5325



FINAL MAP OF
TRACT NO. 5325
 IN THE CITY OF FRESNO, FRESNO COUNTY, CALIFORNIA SURVEYED AND
 PLATTED IN MARCH 2004 BY YAMABE & HORN ENGINEERING, INC.
 CONSISTING OF TWO SHEETS, SHEET 2 OF 2



69	68	67	66	TRACT No. 4217	VOLUME 56	OF PLATS, 62	PAGES 64 & 65, F.C.R.	59	58	57	56	55	54	53	52	51
----	----	----	----	----------------	-----------	--------------	-----------------------	----	----	----	----	----	----	----	----	----



TRACT No. 4381
 VOLUME 54 OF PLATS, PAGES 76 & 77,
 F.C.R.

NORTH POLK AVENUE
 N00°00'04"W 2646.94' (N00°00'00"E 2646.98') [N00°00'19"E 2646.96']
 330.87' (1323.47')
 330.87' (1323.48')

SOUTH 1/4 CORNER SECTION
 15-13/19, FALLS ON MANHOLE,
 POSITION ESTABLISHED PER TIES ON
 FILE WITH FRESNO COUNTY
 SURVEYOR. CR. 5602

SOUTHEAST CORNER SECTION
 15-13/19 FALLS ON MANHOLE,
 POSITION ESTABLISHED PER TIES ON
 FILE WITH FRESNO COUNTY
 SURVEYOR. CR. 6119

CURVE	DELTA	RADIUS	LENGTH
C1	18°11'41"	10.00'	3.18'
C2	18°11'41"	30.00'	9.53'
C3	90°02'16"	59.00'	92.72'
C4	90°03'00"	34.00'	53.44'
C5	4°26'21"	1970.00'	152.63'
C6	4°26'19"	2030.00'	157.26'
C7	4°26'21"	1958.00'	151.70'
C8	3°59'44"	2042.00'	142.40'
C9	29°40'36"	59.00'	30.56'
C10	40°28'38"	59.00'	41.68'
C11	19°53'02"	59.00'	20.48'
C12	1°11'16"	1958.00'	40.59'
C13	1°29'36"	1958.00'	51.03'
C14	1°29'43"	1958.00'	51.10'
C15	0°15'46"	1958.00'	8.98'
C16	1°10'56"	2042.00'	42.13'
C17	1°27'38"	2042.00'	52.05'
C18	1°21'10"	2042.00'	48.21'

LINE	BEARING
R1	S89°59'56"W
R2	N71°48'23"W
R3	N89°59'56"E
R4	S89°52'50"W
R5	N00°04'10"W
R6	S89°53'34"W
R7	N60°25'50"W
R8	N19°57'12"W
R9	N00°04'10"W
R10	N01°07'06"E
R11	N02°36'42"E
R12	N04°06'25"E
R13	S04°22'11"W
R14	N00°04'10"W
R15	S04°22'11"W
R16	S00°04'08"E
R17	S00°22'27"W
R18	S01°43'37"W
R19	S03°11'15"W
R20	N00°04'10"W

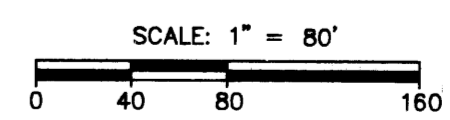
LINE	LENGTH	BEARING
L1	21.02'	N44°57'53"E
L2	9.51'	S77°47'37"W
L3	13.53'	N45°04'54"W
L4	14.47'	S44°57'04"W
L5	14.46'	S44°57'52"W
L6	14.44'	N45°03'47"W
L7	13.53'	S44°56'33"W
L8	12.49'	N44°47'26"W
L9	14.17'	S44°56'12"W
L10	14.75'	N45°04'31"W
L11	5.00'	S89°55'50"W
L12	9.77'	N00°00'04"W
L13	29.52'	S89°55'50"W
L14	6.69'	S00°04'10"E
L15	101.73'	S00°04'17"E
L16	96.17'	S00°04'17"E

LEGEND

- FOUND 3/4" IRON PIPE UNLESS OTHERWISE NOTED
- ⊙ SET 3/4" X 30" I.P. DN. 6" TAGGED "RCE 30501" AT ALL LOT CORNERS UNLESS OTHERWISE NOTED
- DN DOWN
- FD FOUND
- I.P. IRON PIPE
- C.R. CORNER RECORD
- F.C.R. FRESNO COUNTY RECORDS
- O.R.F.C. OFFICIAL RECORDS FRESNO COUNTY
- P.U.E. PUBLIC UTILITY EASEMENT NOW OFFERED FOR DEDICATION FOR PUBLIC USE
- F.C.B.C.M. FRESNO COUNTY BRASS CAP MONUMENT
- L.E. LANDSCAPE EASEMENT NOW OFFERED FOR DEDICATION FOR PUBLIC USE
- MPT INDICATES MULTI-PURPOSE PEDESTRIAN / BIKE / EQUESTRIAN TRAIL NOW OFFERED FOR DEDICATION FOR PUBLIC USE
- PE PEDESTRIAN EASEMENT NOW OFFERED FOR DEDICATION FOR PUBLIC USE
- PPUE PLANTING & PUBLIC UTILITY EASEMENT NOW OFFERED FOR DEDICATION FOR PUBLIC USE
- INDICATES RELINQUISHMENT OF DIRECT VEHICULAR ACCESS RIGHTS
- INDICATES RELINQUISHMENT OF DIRECT ACCESS RIGHTS
- BLUE BORDER INDICATES LIMITS OF THIS SUBDIVISION
- () DATA PER RECORD OF SURVEY RECORDED IN BOOK 31 OF RECORD OF SURVEYS AT PAGE 19, F.C.R.
- [] DATA PER PARCEL MAP NO. 1522 RECORDED IN BOOK 8 OF PARCEL MAPS AT PAEG 6, F.C.R.
- <> DATA PER PARCEL MAP NO. 4801 RECORDED IN BOOK 30 OF PARCEL MAPS AT PAGE 32, F.C.R.
- △ INDICATES DEED OF EASEMENT PREVIOUSLY DEEDED TO THE CITY OF FRESNO FOR PUBLIC STREET PURPOSES RECORDED MAY 13, 1992, AS DOCUMENT No. 92064380, O.R.F.C.
- ◇ INDICATES DEED OF EASEMENT PREVIOUSLY DEEDED TO THE CITY OF FRESNO FOR PUBLIC STREET PURPOSES RECORDED MAY 8, 1992, AS DOCUMENT No. 92061267, O.R.F.C.
- ◇ INDICATES DEED OF EASEMENT PREVIOUSLY DEEDED TO THE CITY OF FRESNO FOR PUBLIC STREET PURPOSES RECORDED MAY 8, 1992, AS DOCUMENT No. 92061266, O.R.F.C.
- △ INDICATES DEED OF EASEMENT PREVIOUSLY DEEDED TO THE CITY OF FRESNO FOR PUBLIC STREET PURPOSES RECORDED JANUARY 12, 1994, AS DOCUMENT No. 94005725, O.R.F.C.
- △ INDICATES DEED OF EASEMENT PREVIOUSLY DEEDED TO THE CITY OF FRESNO FOR PUBLIC STREET PURPOSES RECORDED NOVEMBER 19, 1993, AS DOCUMENT No. 93179188, O.R.F.C.
- ▼ NOW OFFERED FOR DEDICATION FOR PUBLIC STREET PURPOSES

BASIS OF BEARING:
 THE SOUTH LINE OF THE SOUTHEAST 1/4 OF SECTION 15, T.13S., R.19E., MOUNT DIABLO BASE & MERIDIAN, TAKEN AS N89°57'55"W PER RECORD OF SURVEY, RECORDED IN BOOK 31 OF SURVEYS AT PAGE 19, F.C.R.

NOTE:
 SET 3/4" IRON PIPE, 30" LONG, 4" UP IN 6" DIAMETER X 30" P.C.C. MONUMENT, DOWN 6" BELOW GROUND, TAGGED RCE 30501, AT ALL LOT CORNERS UNLESS OTHERWISE NOTED.



PREPARED BY:
YAMABE & HORN ENGINEERING, INC.
 1300 EAST SHAW AVENUE, SUITE 176
 FRESNO, CA 93710
 PH. 559-244-3123 FAX 559-244-3120