

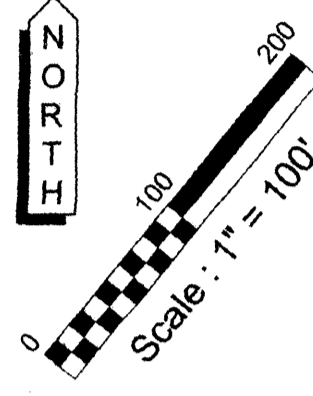


Prepared on Mon Oct 22 15:02:26 2018

Street Names, Addresses and (Lot Numbers) for T5315



FINAL MAP OF
TRACT NO. 5315
VILLA CARMEL II
A PLANNED UNIT DEVELOPMENT
IN THE CITY OF FRESNO, COUNTY OF FRESNO, STATE OF CALIFORNIA
SURVEYED AND PLATTED IN JANUARY, 2006 BY LARS ANDERSEN & ASSOCIATES, INC.
CONSISTING OF THREE SHEETS
SHEET 1 OF 3

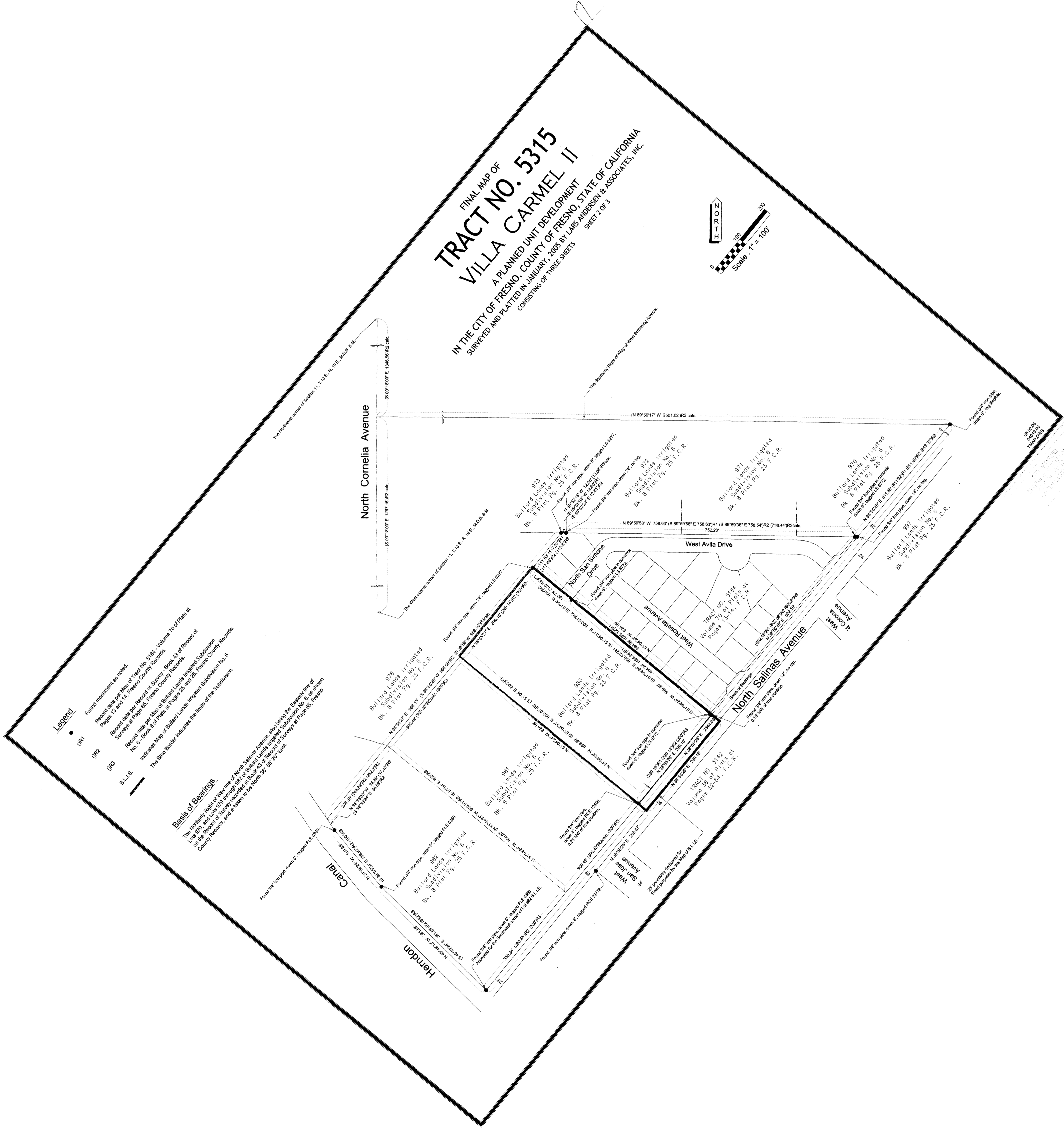


Legend

- Found monument or stake
- Record data per Map of Tract No. 5104 - Volume 70 of Plans at Pages 13 and 14, Fresno County Records
- Record data per Record of Survey Book 41 of Record of Surveys at Page 63, Fresno County Records
- Record data per Map of Bullard Lands Infrared Subdivision No. 6, Book 4 of Plans at Pages 26 and 28, Fresno County Records
- Indicates Map of Bullard Lands Infrared Subdivision No. 6. The Blue Border indicates the limits of the Subdivision

Basis of Bearings

The Northern Right of Way line of North Salinas Avenue, also known as the Easement line of Lot 105, of the 979 Acre Original 969 Acre Bullard Lands Infrared Subdivision No. 6, as shown on the Record of Survey located in Book 41 of Record of Surveys at Page 65, Fresno County Records and is taken to be North 88° 25' 26" East.



RECORDED
IN THE
COUNTY OF FRESNO
CALIFORNIA
ON JANUARY 20, 2006
AT 11:00 AM

FINAL MAP OF
TRACT NO. 5315
VILLA CARMEL II
 A PLANNED UNIT DEVELOPMENT
 IN THE CITY OF FRESNO, COUNTY OF FRESNO, STATE OF CALIFORNIA
 SURVEYED AND PLATTED IN JANUARY, 2005 BY LARS ANDERSEN & ASSOCIATES, INC.
 CONSISTING OF THREE SHEETS SHEET 3 OF 3

Basis of Bearings

The Northern Right of Way line of North Salinas Avenue, also being the Easement line of Lots 970, and the 970' long 882' of the Map of Bullard Lane Irregular Subdivision No. 6, as shown on Record and is taken to be from 55° 25' East.

Legend

- Monument found and accepted as noted on Sheet 2 of 3 Sheets.
- Monument found and accepted as noted on Sheet 2 of 3 Sheets.
- 3/4" x 3/4" iron pipe 1/4" in diameter x 30" P.C.C. monument.
- △ Indicates Landscape Easement now offered for dedication for public use.
- Indicates Public Utility Easement now offered for dedication for public use.
- Indicates Curve Data reference.
- Indicates Road Bearing.
- Indicates Right-of-Way.
- Indicates Right-of-Way.
- The Blue Border indicates the limits of the Subdivision.

Notes

1. All Block Corners, Lot Corners, Angle Points and Curve Points are marked with a 3/4" x 3/4" iron pipe, 5/8" dia. with tag LS 6772 or as noted.

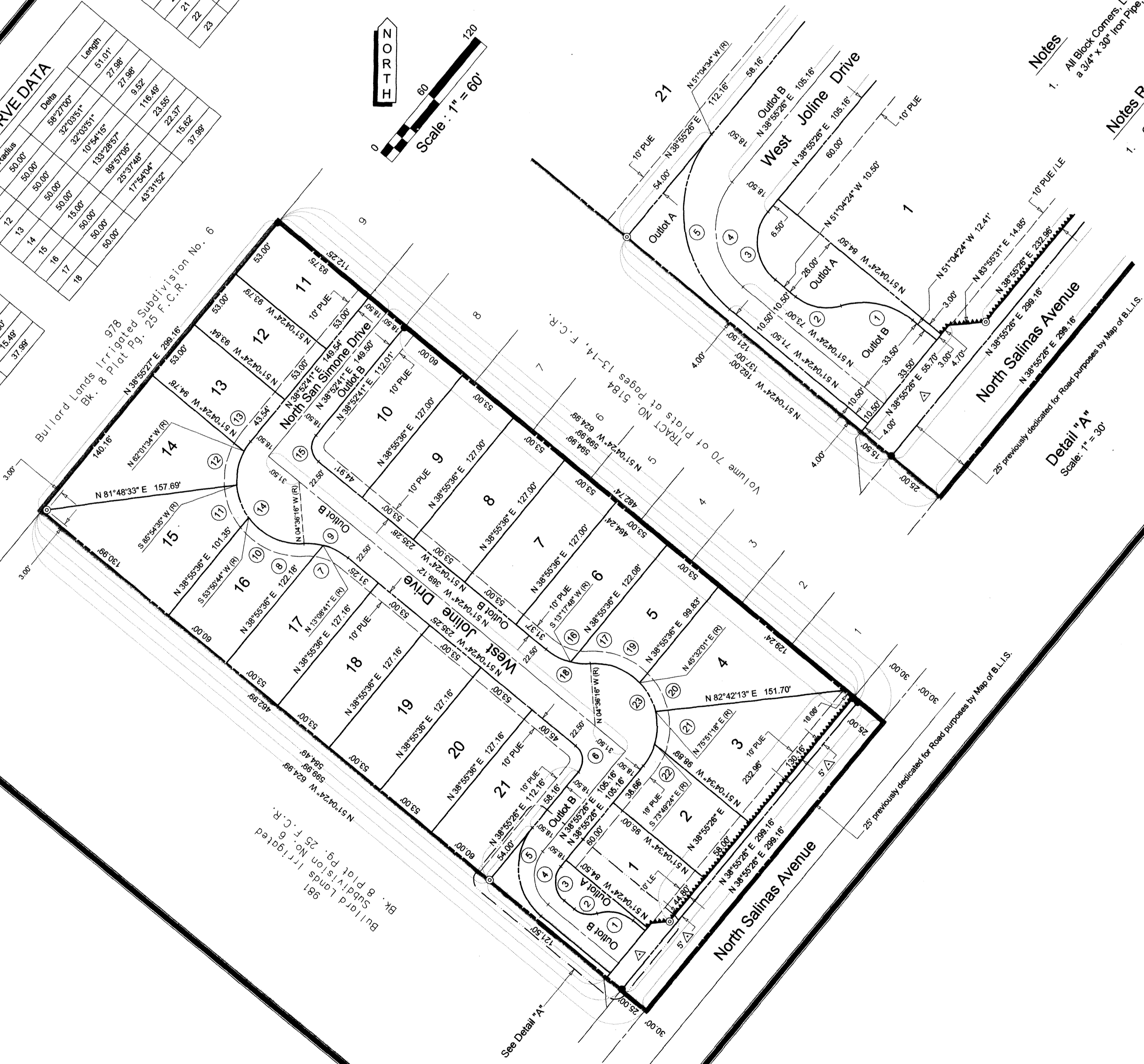
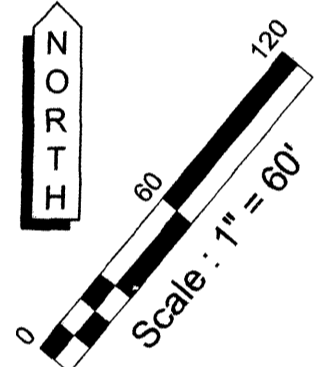
Notes Regarding Outlets

1. Outlet "A" shall be for Landscaping and Public Utility Purposes.
2. Outlet "B" shall be for Access, Parking and Public Utility Purposes.

No.	Radius	Delta	Length
1	50.00'	57.1133°	30.571'
2	50.00'	57.1133°	30.571'
3	50.00'	57.1133°	30.571'
4	50.00'	57.1133°	30.571'
5	50.00'	57.1133°	30.571'
6	50.00'	57.1133°	30.571'
7	50.00'	57.1133°	30.571'
8	50.00'	57.1133°	30.571'
9	50.00'	57.1133°	30.571'

No.	Radius	Delta	Length
10	50.00'	57.1133°	30.571'
11	50.00'	57.1133°	30.571'
12	50.00'	57.1133°	30.571'
13	50.00'	57.1133°	30.571'
14	50.00'	57.1133°	30.571'
15	50.00'	57.1133°	30.571'
16	50.00'	57.1133°	30.571'
17	50.00'	57.1133°	30.571'
18	50.00'	57.1133°	30.571'

No.	Radius	Delta	Length
19	50.00'	57.1133°	30.571'
20	50.00'	57.1133°	30.571'
21	50.00'	57.1133°	30.571'
22	50.00'	57.1133°	30.571'
23	50.00'	57.1133°	30.571'



Detail "A"
 Scale: 1" = 30'

LS 6772
 04/03/05
 TMAP 5315