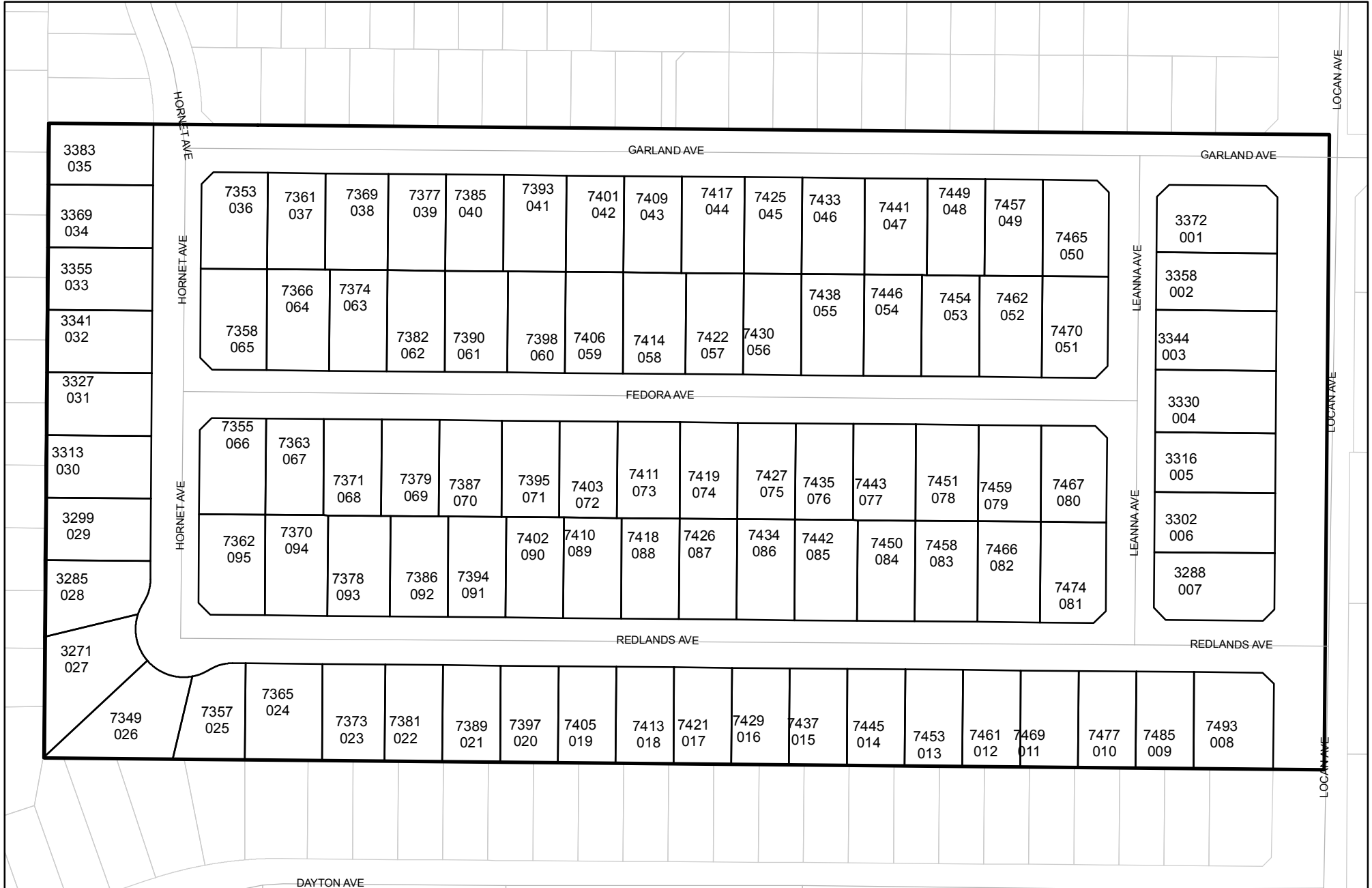




Prepared on Mon Oct 22 15:04:00 2018

Street Names, Addresses and (Lot Numbers) for T5312



FINAL MAP OF TRACT NO. 5312

IN THE CITY OF FRESNO, FRESNO COUNTY, CALIFORNIA
 SURVEYED AND PLATTED IN SEPTEMBER 2004
 BY YAMABE & HORN ENGINEERING, INC.
 CONSISTING OF TWO SHEETS
 SHEET 2 OF 2

LINE	LENGTH	BEARING
L1	16.53'	N44°57'18"W
L2	16.52'	N45°04'10"E
L3	17.47'	S44°55'09"E
L4	17.45'	N45°03'44"E
L5	17.46'	N44°56'32"W
L6	17.45'	N45°03'28"E
L7	17.46'	N44°56'32"W
L8	17.45'	S45°03'28"W
L9	16.53'	N44°56'32"W
L10	17.45'	S45°03'08"W
L11	17.47'	S44°56'52"E
L12	17.45'	S45°03'08"W
L13	17.46'	N44°56'59"W

CURVE	DELTA	RADIUS	LENGTH
C1	32°38'13"	45.00'	25.63'
C2	155°08'57"	50.00'	135.39'
C3	32°38'13"	45.00'	25.63'
C4	15°05'24"	50.00'	13.17'
C5	58°57'14"	50.00'	51.45'
C6	59°21'33"	50.00'	51.80'
C7	21°44'46"	50.00'	18.98'

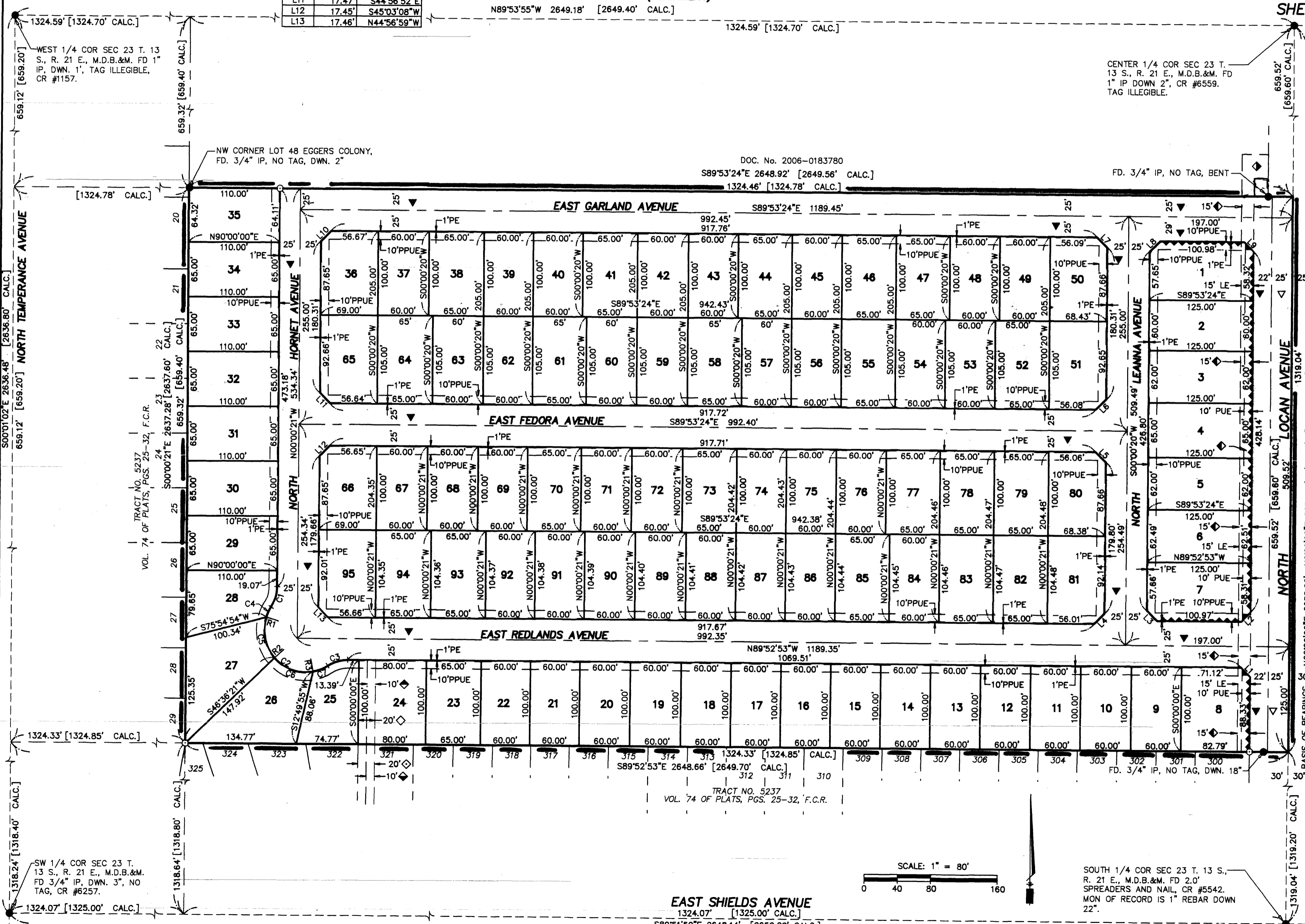
LINE	BEARING
R1	S72°27'32"E
R2	N48°35'14"E
R3	N10°46'19"W

BASIS OF BEARINGS

THE EAST LINE OF THE SOUTHWEST 1/4 OF SECTION 23, T. 13 S., R. 21 E., M.D.B.&M. AS SHOWN ON RECORD OF SURVEY AS RECORDED IN BOOK 48 OF RECORD OF SURVEYS, PAGE 35, F.C.R. TAKEN TO BE N 00°00'20" E

EAST DAKOTA AVENUE (ALIGNMENT)

N89°53'55"W 2649.18' [2649.40' CALC.]
 1324.59' [1324.70' CALC.]



LEGEND

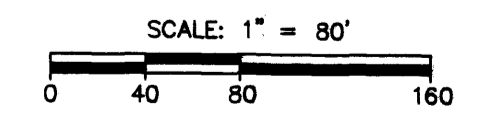
- MONUMENT FOUND AND ACCEPTED AS NOTED, UNLESS OTHERWISE NOTED
- SET 3/4" x 30" IP DOWN 6" TAGGED "RCE 30501", UNLESS OTHERWISE NOTED.
- <> DATA PER RECORD OF SURVEY AS RECORDED IN BOOK 48 OF RECORD OF SURVEYS, PAGE 35, F.C.R.
- () DATA PER PARCEL MAP NO. 3102, RECORDED IN BOOK 20, PAGE 83, F.C.R.
- [] DATA PER PLAT MAP OF EGGERS COLONY, RECORDED IN VOLUME 4 OF PLATS, PAGE 60, F.C.R.
- ▼ NOW OFFERED FOR PUBLIC STREET PURPOSES
- ▽ PREVIOUSLY DEDICATED FOR PUBLIC STREET PURPOSES ON PLAT MAP OF EGGERS COLONY, RECORDED IN VOLUME 4 OF PLATS, AT PAGE 60, F.C.R.
- ◆ EASEMENT FOR IRRIGATION PIPELINE PURPOSES RECORDED AS DOC. No. 2005-0298982 O.R.F.C.
- ◆ EASEMENT FOR IRRIGATION PIPELINE PURPOSES RECORDED AS DOC. No. 2007-008693 O.R.F.C.
- ◆ STORM DRAIN EASEMENTS GRANTED TO FMFCD RECORDED 12/29/05 AS DOC. No. 2005-303890 & 2005-303891, O.R.F.C.
- ◆ 20' WIDE STORM DRAIN PIPELINE EASEMENT RECORDED AS DOCUMENT No. 2007-009273 O.R.F.C. AND 20' WIDE STORM DRAIN CHANNEL EASEMENT RECORDED AS DOCUMENT No. 2007-009273, O.R.F.C.
- ◆ 10' WIDE WATER MAIN EASEMENT GRANTED TO THE CITY OF FRESNO, RECORDED AS DOC. No. 2007-009274, O.R.F.C. (Exhibit B)
- ◆ 10' WIDE WATER MAIN EASEMENT GRANTED TO THE CITY OF FRESNO, RECORDED AS DOC. No. 2007-009274, O.R.F.C. (Exhibit A)
- FD FOUND
- F.C.R. FRESNO COUNTY RECORDS
- O.R.F.C. OFFICIAL RECORDS FRESNO COUNTY
- I.P. IRON PIPE
- PUE PUBLIC UTILITY EASEMENT NOW OFFERED FOR DEDICATION FOR PUBLIC USE
- FMFCD FRESNO METROPOLITAN FLOOD CONTROL DISTRICT
- LE LANDSCAPE EASEMENT NOW OFFERED FOR DEDICATION FOR PUBLIC USE
- T.F. TIES ON FILE WITH FRESNO COUNTY SURVEYOR
- CR CORNER RECORD AS ON FILE WITH FRESNO COUNTY SURVEYOR
- PPUE PLANTING & PUBLIC UTILITIES EASEMENT NOW OFFERED FOR DEDICATION FOR PUBLIC USE
- PE PEDESTRIAN EASEMENT NOW OFFERED FOR DEDICATION FOR PUBLIC USE
- INDICATES RELINQUISHMENT OF DIRECT ACCESS RIGHTS
- SECTION LINE
- PROPERTY LINE
- BOLD BORDER INDICATES THE LIMITS OF THIS SUBDIVISION

WEST 1/4 COR SEC 23 T. 13 S., R. 21 E., M.D.B.&M. FD 1" IP, DWN. 1", TAG ILLEGIBLE, CR #1157.

CENTER 1/4 COR SEC 23 T. 13 S., R. 21 E., M.D.B.&M. FD 1" IP DOWN 2", CR #6559. TAG ILLEGIBLE.

SW 1/4 COR SEC 23 T. 13 S., R. 21 E., M.D.B.&M. FD 3/4" IP, DWN. 3", NO TAG, CR #6257.

SOUTH 1/4 COR SEC 23 T. 13 S., R. 21 E., M.D.B.&M. FD 2.0" SPREADERS AND NAIL, CR #5442. MON OF RECORD IS 1" REBAR DOWN 22".



EAST SHIELDS AVENUE

1324.07' [1325.00' CALC.]
 S89°51'50"E 2648.14' [2650.00' CALC.]

PREPARED BY:
YAMABE & HORN ENGINEERING, INC.
 1300 EAST SHAW AVENUE, SUITE 176
 FRESNO, CA 93710
 PH. 559-244-3123 FAX 559-244-3120