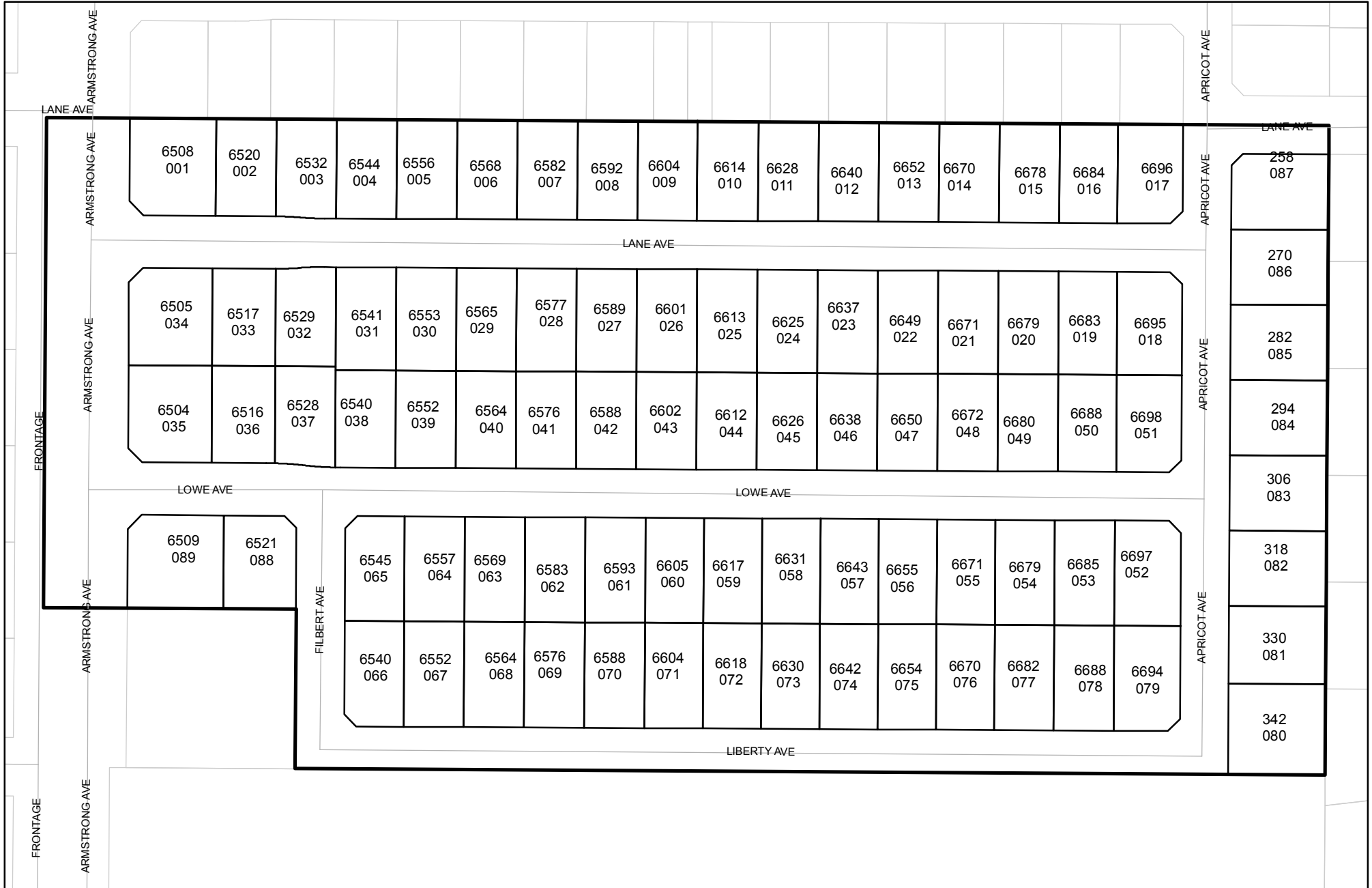




Prepared on Thu Feb 14 21:45:57 2019

# Street Names, Addresses and (Lot Numbers) for T5310



# FINAL MAP OF TRACT NO. 5310

IN THE CITY OF FRESNO, FRESNO COUNTY, CALIFORNIA  
 SURVEYED AND PLATTED IN NOVEMBER 2002  
 BY YAMABE & HORN ENGINEERING, INC.  
 CONSISTING OF TWO SHEETS  
 SHEET 2 OF 2

LINE TABLE		
LINE	LENGTH	BEARING
L1	17.46'	N44°48'30"E
L2	20.67'	N45°11'04"W
L3	17.46'	N45°11'30"W
L4	20.67'	N44°48'56"E
L5	17.46'	N44°48'30"E
L6	20.67'	S45°11'04"E
L7	17.46'	N45°10'35"W
L8	17.46'	S44°48'56"W
L9	17.45'	N45°11'04"W
L10	20.67'	N44°48'56"E
L11	17.46'	N44°48'28"E
L12	17.45'	N45°11'30"W
L13	16.53'	S44°48'30"W

RADIAL TABLE			
R1	R2	R3	R4
S00°19'21"E	N00°03'51"W	N01°12'37"E	S00°28'01"W

CURVE TABLE			
CURVE	DELTA	RADIUS	LENGTH
C1	4°19'56"	350.00'	26.46'
C2	4°19'56"	350.00'	26.46'
C3	0°07'49"	350.00'	0.79'
C4	4°12'07"	350.00'	25.67'
C5	4°19'56"	350.00'	26.46'
C6	4°19'56"	350.00'	26.46'
C7	0°07'42"	350.00'	0.78'
C8	4°12'14"	350.00'	25.68'
C9	6°07'41"	350.00'	37.43'
C10	6°07'41"	350.00'	37.43'
C11	1°24'16"	350.00'	8.58'
C12	4°43'25"	350.00'	28.85'
C13	5°27'01"	350.00'	33.29'
C14	0°40'40"	350.00'	4.14'

EAST KINGS CANYON ROAD (STATE ROUTE 180)  
 BASIS OF BEARINGS S89°49'00"W 2638.89' <N89°49'00"E>

FD BCM 2", ACCEPTED AS  
 NE 1/4 CORNER SEC  
 10-14/21, CR #4681

**BASIS OF BEARINGS:**

THE NORTH LINE OF THE NORTHEAST QUARTER OF SECTION 10, TOWNSHIP 14 SOUTH, RANGE 21 EAST, MOUNT DIABLO BASE & MERIDIAN, AS SHOWN ON TRACT NO. 5123 RECORDED IN VOLUME 68 OF PLATS AT PAGES 41 THRU 43 F.C.R. TAKEN TO BE NORTH 89°49'00"EAST.

**NOTE**

SET 3/4" IRON PIPE, DOWN 0.5', TAGGED "RCE 30501" AT ALL LOT CORNERS, UNLESS OTHERWISE NOTED

**LEGEND**

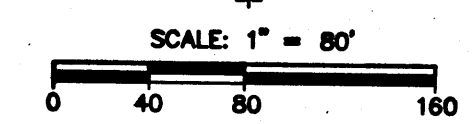
- FOUND BRASS CAP MONUMENT, 2", CR #4470, UNLESS OTHERWISE NOTED
- SET 3/4" IRON PIPE, 30" LONG, 4" UP IN 6" DIAMETER X 30" P.C.C. MONUMENT, DOWN 6" BELOW GROUND, TAGGED RCE 30501
- SET 3/4" IRON PIPE, 30" LONG, DOWN 6", TAGGED "RCE 30501"
- ▼ NOW OFFERED FOR DEDICATION FOR PUBLIC STREET PURPOSES
- ▽ EASEMENT FOR PUBLIC ROAD PURPOSES, RECORDED JULY 21, 1910 IN BK. 452, PG 448 OF DEEDS.
- CR DENOTES CORNER RECORDS ON FILE WITH FRESNO COUNTY SURVEYOR
- IP IRON PIPE
- ORFC OFFICIAL RECORDS FRESNO COUNTY
- F.C.R. FRESNO COUNTY RECORDS
- PPUE PLANTING AND PUBLIC UTILITY EASEMENT NOW OFFERED FOR DEDICATION FOR PUBLIC USE
- PUE PUBLIC UTILITY EASEMENT NOW OFFERED FOR DEDICATION FOR PUBLIC USE
- PE PEDESTRIAN EASEMENT NOW OFFERED FOR DEDICATION FOR PUBLIC USE
- LE LANDSCAPE EASEMENT
- BCM BRASS CAP MONUMENT
- ( ) RECORD DATA PER TRACT NO. 1612, RECORDED IN VOL. 20 OF PLATS AT PAGE 37, F.C.R.
- [ ] RECORD DATA PER RECORD OF SURVEY, RECORDED IN BOOK 26 OF SURVEYS AT PAGE 29, F.C.R.
- <> RECORD DATA PER TRACT NO. 5123, RECORDED IN VOLUME 68, OF PLATS AT PAGES 41-43, F.C.R.
- { } RECORD DATA PER TRACT NO. 1752, RECORDED IN VOLUME 19 OF PLATS AT PAGE 76, F.C.R.
- ▲ INDICATES RELINQUISHMENT OF DIRECT VEHICULAR ACCESS RIGHTS
- BLUE BORDER INDICATES LIMITS OF SUBDIVISION

FD BCM 2", ACCEPTED AS  
 AS N 1/4 CORNER SEC  
 10-14/21, CR #4470

SOUTH ARMSTRONG AVENUE  
 S00°10'29"E 2874.09'  
 S00°10'29"E 2874.09' [1336.89'] [1336.78']

FD BCM 2", ACCEPTED AS  
 C 1/4 CORNER SEC  
 10-14/21, CR #4708

FD BCM 2", ACCEPTED AS  
 E 1/4 CORNER SEC  
 10-14/21, CR #2342



PREPARED BY:  
**YAMABE & HORN ENGINEERING, INC.**  
 1300 EAST SHAW AVENUE, SUITE 176  
 FRESNO, CA 93710  
 PH. 559-244-3123 FAX 559-244-3120

# FINAL MAP OF TRACT NO. 5310

IN THE CITY OF FRESNO, FRESNO COUNTY, CALIFORNIA  
SURVEYED AND PLATTED IN NOVEMBER 2002  
BY YAMABE & HORN ENGINEERING, INC.  
CONSISTING OF TWO SHEETS  
SHEET 2 OF 2

LINE TABLE		
LINE	LENGTH	BEARING
L1	17.46'	N44°48'30"E
L2	20.67'	N45°11'04"W
L3	17.46'	N45°11'30"W
L4	20.67'	N44°48'56"E
L5	17.46'	N44°48'30"E
L6	20.67'	S45°11'04"E
L7	17.46'	N45°10'35"W
L8	17.46'	S44°48'56"W
L9	17.45'	N45°11'04"W
L10	20.67'	N44°48'56"E
L11	17.46'	N44°48'28"E
L12	17.45'	N45°11'30"W
L13	16.53'	S44°48'30"W

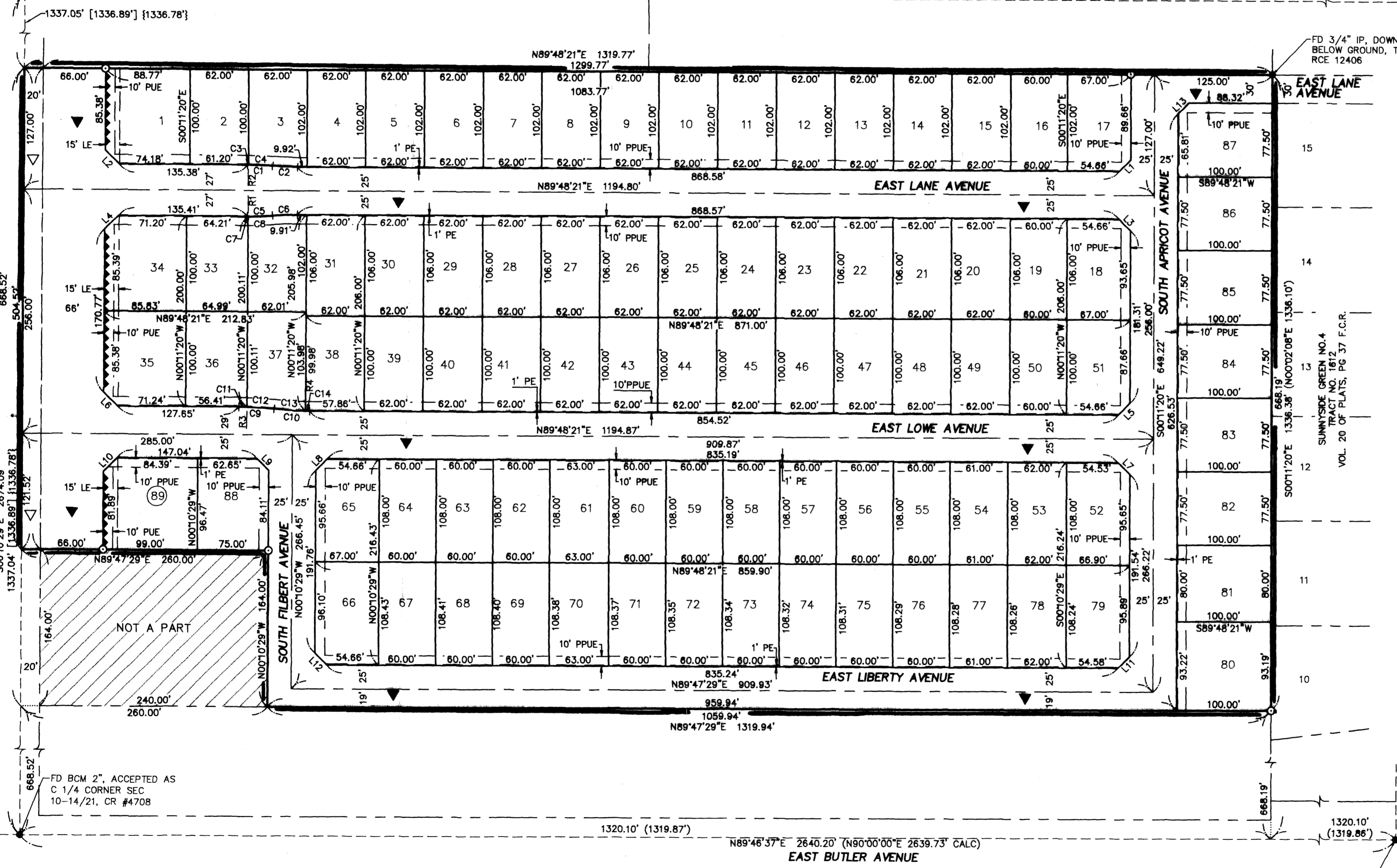
RADIAL TABLE	
R1	R2
S00°18'21"E	N00°03'51"W
N00°12'37"E	S00°28'01"W

CURVE TABLE			
CURVE	DELTA	RADIUS	LENGTH
C1	4°19'56"	350.00'	26.46'
C2	4°19'56"	350.00'	26.46'
C3	0°07'49"	350.00'	0.79'
C4	4°12'07"	350.00'	25.67'
C5	4°19'56"	350.00'	26.46'
C6	4°19'56"	350.00'	26.46'
C7	0°07'42"	350.00'	0.78'
C8	4°12'14"	350.00'	25.68'
C9	8°07'41"	350.00'	37.43'
C10	8°07'41"	350.00'	37.43'
C11	1°24'18"	350.00'	8.58'
C12	4°43'25"	350.00'	28.85'
C13	5°27'01"	350.00'	33.29'
C14	0°40'40"	350.00'	4.14'

EAST KINGS CANYON ROAD (STATE ROUTE 180)  
BASIS OF BEARINGS S89°49'00"W 2638.89' <N89°49'00"E>

FD BCM 2", ACCEPTED AS NE 1/4 CORNER SEC 10-14/21, CR #4681

FD BCM 2", ACCEPTED AS N 1/4 CORNER SEC 10-14/21, CR #4470



### BASIS OF BEARINGS:

THE NORTH LINE OF THE NORTHEAST QUARTER OF SECTION 10, TOWNSHIP 14 SOUTH, RANGE 21 EAST, MOUNT DIABLO BASE & MERIDIAN, AS SHOWN ON TRACT NO. 5123 RECORDED IN VOLUME 68 OF PLATS AT PAGES 41 THRU 43 F.C.R. TAKEN TO BE NORTH 89°49'00"EAST.

### NOTE

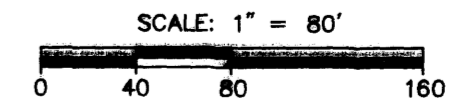
SET 3/4" IRON PIPE, DOWN 0.5', TAGGED "RCE 30501" AT ALL LOT CORNERS, UNLESS OTHERWISE NOTED

### LEGEND

- FOUND BRASS CAP MONUMENT, 2", CR #4470, UNLESS OTHERWISE NOTED
- SET 3/4" IRON PIPE, 30" LONG, 4" UP IN 6" DIAMETER X 30" P.C.C. MONUMENT, DOWN 6" BELOW GROUND, TAGGED RCE 30501
- SET 3/4" IRON PIPE, 30" LONG, DOWN 6", TAGGED "RCE 30501"
- ▼ NOW OFFERED FOR DEDICATION FOR PUBLIC STREET PURPOSES
- ▽ EASEMENT FOR PUBLIC ROAD PURPOSES, RECORDED JULY 21, 1910 IN BK. 452, PG 448 OF DEEDS.
- CR DENOTES CORNER RECORDS ON FILE WITH FRESNO COUNTY SURVEYOR
- IP IRON PIPE
- ORFC OFFICIAL RECORDS FRESNO COUNTY
- F.C.R. FRESNO COUNTY RECORDS
- PPUE PLANTING AND PUBLIC UTILITY EASEMENT NOW OFFERED FOR DEDICATION FOR PUBLIC USE
- PUE PUBLIC UTILITY EASEMENT NOW OFFERED FOR DEDICATION FOR PUBLIC USE
- PE PEDESTRIAN EASEMENT NOW OFFERED FOR DEDICATION FOR PUBLIC USE
- LE LANDSCAPE EASEMENT
- BCM BRASS CAP MONUMENT
- ( ) RECORD DATA PER TRACT NO. 1612, RECORDED IN VOL. 20 OF PLATS AT PAGE 37, F.C.R.
- [ ] RECORD DATA PER RECORD OF SURVEY, RECORDED IN BOOK 26 OF SURVEYS AT PAGE 29, F.C.R.
- <> RECORD DATA PER TRACT NO. 5123, RECORDED IN VOLUME 68, OF PLATS AT PAGES 41-43, F.C.R.
- { } RECORD DATA PER TRACT NO. 1752, RECORDED IN VOLUME 19 OF PLATS AT PAGE 76, F.C.R.
- ▲ INDICATES RELINQUISHMENT OF DIRECT VEHICULAR ACCESS RIGHTS
- BLUE BORDER INDICATES LIMITS OF SUBDIVISION

FD BCM 2", ACCEPTED AS C 1/4 CORNER SEC 10-14/21, CR #4708

FD BCM 2", ACCEPTED AS E 1/4 CORNER SEC 10-14/21, CR #2342



PREPARED BY:  
**YAMABE & HORN ENGINEERING, INC.**  
1300 EAST SHAW AVENUE, SUITE 176  
FRESNO, CA 93710  
PH. 558-244-3123 FAX 558-244-3120