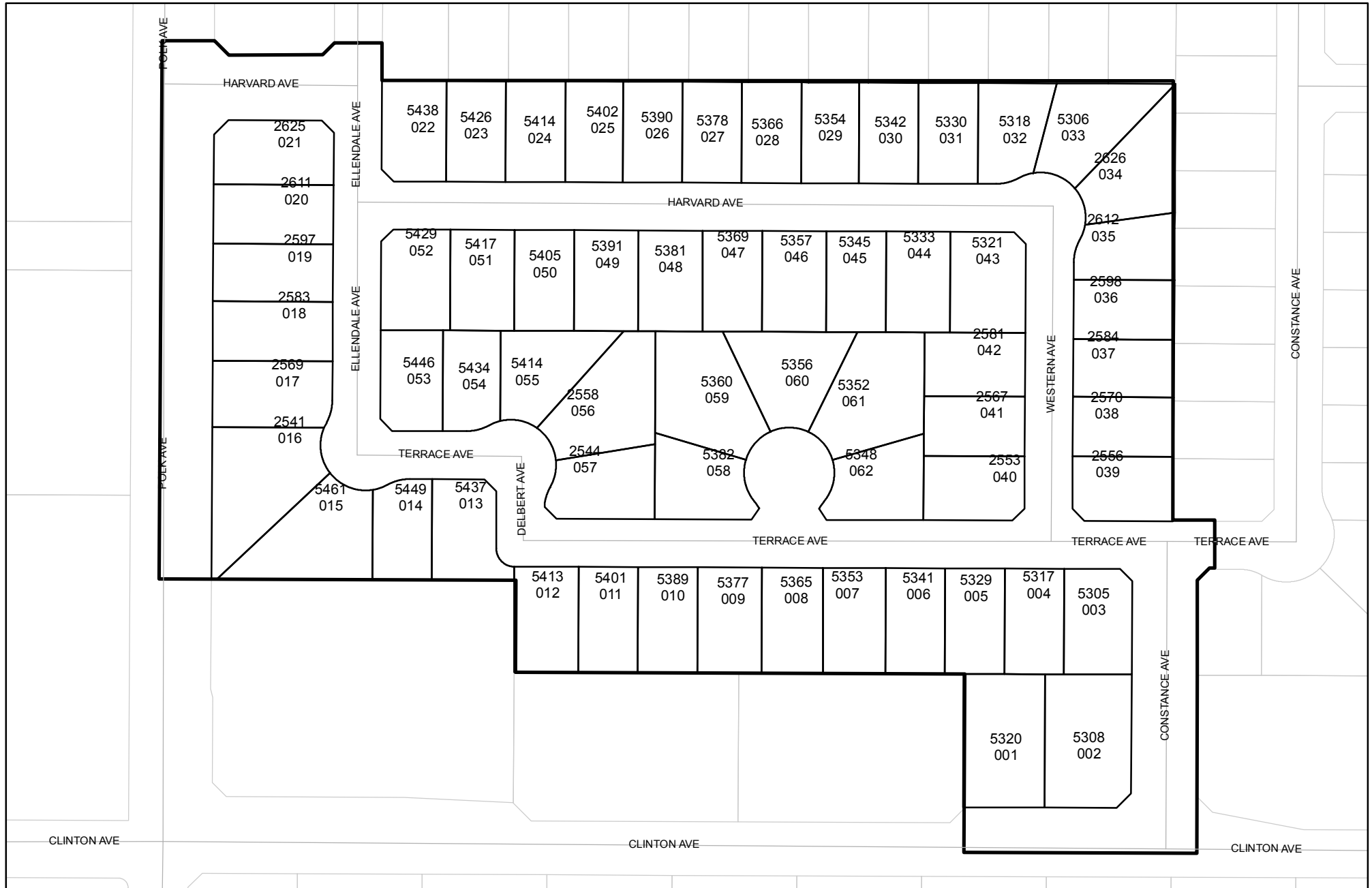




# Street Names, Addresses and (Lot Numbers) for T5300

Prepared on Tue Dec 26 20:42:02 2017

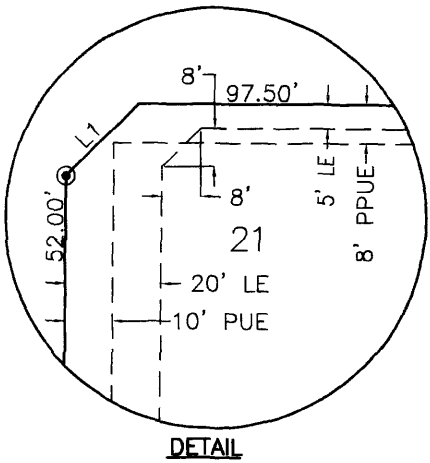


# TRACT NO. 5300

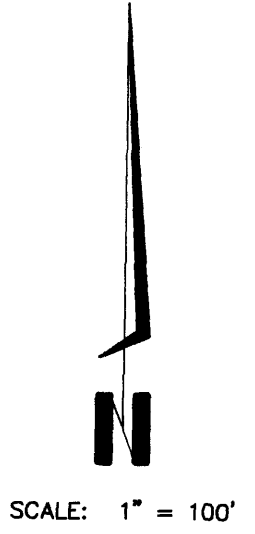
SHEET TWO OF TWO SHEETS

PHASE I OF VESTING TENTATIVE MAP NO. 5300  
 IN THE CITY OF FRESNO, COUNTY OF FRESNO, STATE OF CALIFORNIA  
 SURVEYED AND PLATTED IN APRIL 2005, BY GARY G. GIANNETTA

3/4" IRON PIPE, 6" DOWN, WITH BRASS TAG, TAGGED RCE 10782, AS BEING THE NORTH QUARTER CORNER OF SECTION 27, T 13 S, R 19 E, M.D.B. & M. C.R.# 2924



LINE	DIRECTION	DISTANCE
L1	N 44°54'23" E	21.21'
L2	N 45°05'37" W	17.68'
L3	N 45°08'10" W	17.66'
L4	N 44°51'50" E	17.69'
L5	N 45°07'42" W	17.66'
L6	N 45°08'10" W	17.66'
L7	N 45°11'02" W	17.68'
L8	N 44°59'30" W	17.62'
L9	N 33°49'32" E	13.99'
L10	N 34°12'15" W	13.99'
L11	N 44°51'59" E	17.69'
L12	N 45°08'01" W	17.66'
L13	N 45°08'01" W	17.66'
L14	N 44°51'59" E	21.23'



**LEGEND**

- MONUMENT FOUND AND ACCEPTED AS NOTED
- SET 3/4" IRON PIPE, 30" LONG, 6" DOWN BELOW GROUND, TAGGED RCE 26996
- ⊙ SET 3/4" IRON PIPE, 30" LONG, 4" UP IN 6" DIAMETER x 30" P.C.C. MONUMENT, DOWN 6" BELOW GROUND, TAGGED R.C.E. 26996
- ▲ NOW OFFERED FOR DEDICATION FOR PUBLIC STREET PURPOSES
- ▲▲▲▲ INDICATES RELINQUISHMENT OF DIRECT ACCESS RIGHTS
- △△△△ INDICATES RELINQUISHMENT OF DIRECT VEHICULAR ACCESS RIGHTS
- ( ) RECORD DATA AS PER PARCEL MAP NO. 1327, RECORDED IN BOOK 6, PAGE 39 OF PARCEL MAPS, FRESNO COUNTY RECORDS
- [ ] RECORD DATA AS PER RECORD OF SURVEY RECORDED IN BOOK 24, PAGE 19 OF FRESNO COUNTY RECORDS
- (( )) RECORD DATA AS PER PARCEL MAP NO. 1028, RECORDED IN BOOK 6, PAGE 25 OF PARCEL MAPS, FRESNO COUNTY RECORDS
- { } RECORD DATA AS PER PARCEL MAP NO. 2456, RECORDED IN BOOK 15, PAGE 93 OF PARCEL MAPS, FRESNO COUNTY RECORDS
- CALC CALCULATED FROM RECORD DATA
- F.C.R. FRESNO COUNTY RECORDS
- PE PEDESTRIAN EASEMENT NOW OFFERED FOR DEDICATION FOR PUBLIC USE
- PUE PUBLIC UTILITY EASEMENT NOW OFFERED FOR DEDICATION FOR PUBLIC USE
- PPUE PLANTING AND PUBLIC UTILITY EASEMENT NOW OFFERED FOR DEDICATION FOR PUBLIC USE
- SDE FRESNO METROPOLITAN FLOOD CONTROL DISTRICT PIPELINE EASEMENT, RECORDED August 15, 2006 AS DOC. NO. 2006-0169239, F.C.R.
- (R) DENOTES RADIAL BEARING TO CURVE

BLUE BORDER INDICATES THE LIMITS OF THIS SUBDIVISION

**BASIS OF BEARINGS:**

THE WEST LINE OF THE NORTHEAST QUARTER OF SECTION 27, TOWNSHIP 13 SOUTH, RANGE 19 EAST TAKEN AS BEARING S 0°05'37" E AS PER PARCEL MAP NO. 1327, RECORDED IN BOOK 6, PAGE 39 OF PARCEL MAPS, FRESNO COUNTY RECORDS

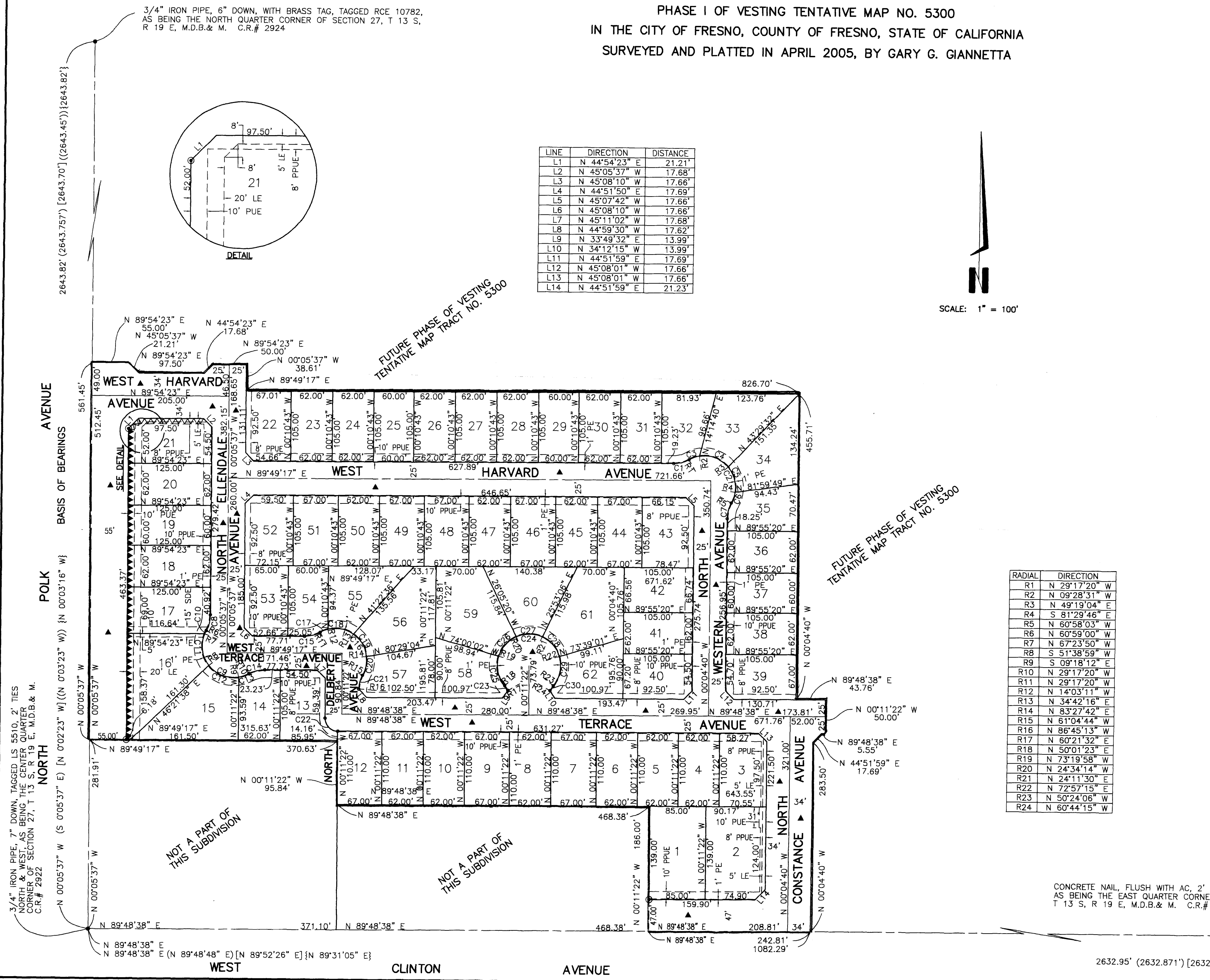
**NOTES:**

1. SET 3/4" x 30" IRON PIPE, 6" DOWN, TAGGED RCE 26996 AT ALL LOT CORNERS, BLOCK CORNERS, ANGLE POINTS AND CURVE POINTS

RADIAL	DIRECTION
R1	N 29°17'20" W
R2	N 09°28'31" W
R3	N 49°19'04" E
R4	S 81°29'46" E
R5	N 60°58'03" W
R6	N 60°59'00" W
R7	N 67°23'50" W
R8	S 51°38'59" W
R9	S 09°18'12" E
R10	N 29°17'20" W
R11	N 29°17'20" W
R12	N 14°03'11" W
R13	N 34°42'16" E
R14	N 83°27'42" E
R15	N 61°04'44" W
R16	N 86°45'13" W
R17	N 60°21'32" E
R18	N 50°01'23" E
R19	N 73°19'58" W
R20	N 24°34'14" W
R21	N 24°11'30" E
R22	N 72°57'15" E
R23	N 50°24'06" W
R24	N 60°44'15" W

CURVE	RADIUS	LENGTH	TANGENT	DELTA
C1	48.00'	24.39'	12.46'	29°06'37"
C2	47.00'	121.67'	165.66'	148°19'17"
C3	47.00'	16.25'	8.21'	19°48'49"
C4	47.00'	48.23'	26.48'	58°47'35"
C5	47.00'	40.35'	21.51'	49°11'10"
C6	47.00'	16.84'	8.51'	20°31'43"
C7	48.00'	24.39'	12.46'	29°06'37"
C8	48.00'	24.39'	12.46'	29°06'37"
C9	47.00'	121.65'	165.57'	148°18'21"
C10	47.00'	5.26'	2.63'	06°24'51"
C11	47.00'	50.00'	27.66'	60°57'11"
C12	47.00'	50.00'	27.66'	60°57'11"
C13	47.00'	16.39'	8.28'	19°59'08"
C14	48.00'	24.39'	12.46'	29°06'37"
C15	48.00'	24.39'	12.46'	29°06'37"
C16	47.00'	121.58'	165.05'	148°12'36"
C17	47.00'	12.50'	6.29'	15°14'09"
C18	47.00'	40.00'	21.30'	48°45'27"
C19	47.00'	40.00'	21.30'	48°45'26"
C20	47.00'	29.08'	15.11'	35°27'34"
C21	48.00'	21.51'	10.94'	25°40'28"
C22	18.95'	29.76'	18.95'	90°00'00"
C23	48.00'	8.66'	4.34'	10°20'09"
C24	47.00'	212.93'	56.44'	259°34'31"
C25	47.00'	46.47'	25.33'	56°38'39"
C26	47.00'	40.00'	21.30'	48°45'44"
C27	47.00'	40.00'	21.30'	48°45'44"
C28	47.00'	40.00'	21.30'	48°45'45"
C29	47.00'	46.46'	25.33'	56°38'39"
C30	48.00'	8.66'	4.34'	10°20'09"

CONCRETE NAIL, FLUSH WITH AC, 2' TIE, NORTH AS BEING THE EAST QUARTER CORNER OF SECTION 27, T 13 S, R 19 E, M.D.B. & M. C.R.# 6003



NOT A PART OF THIS SUBDIVISION

NOT A PART OF THIS SUBDIVISION

2632.95' (2632.871') [2632.62'] {2632.94'}