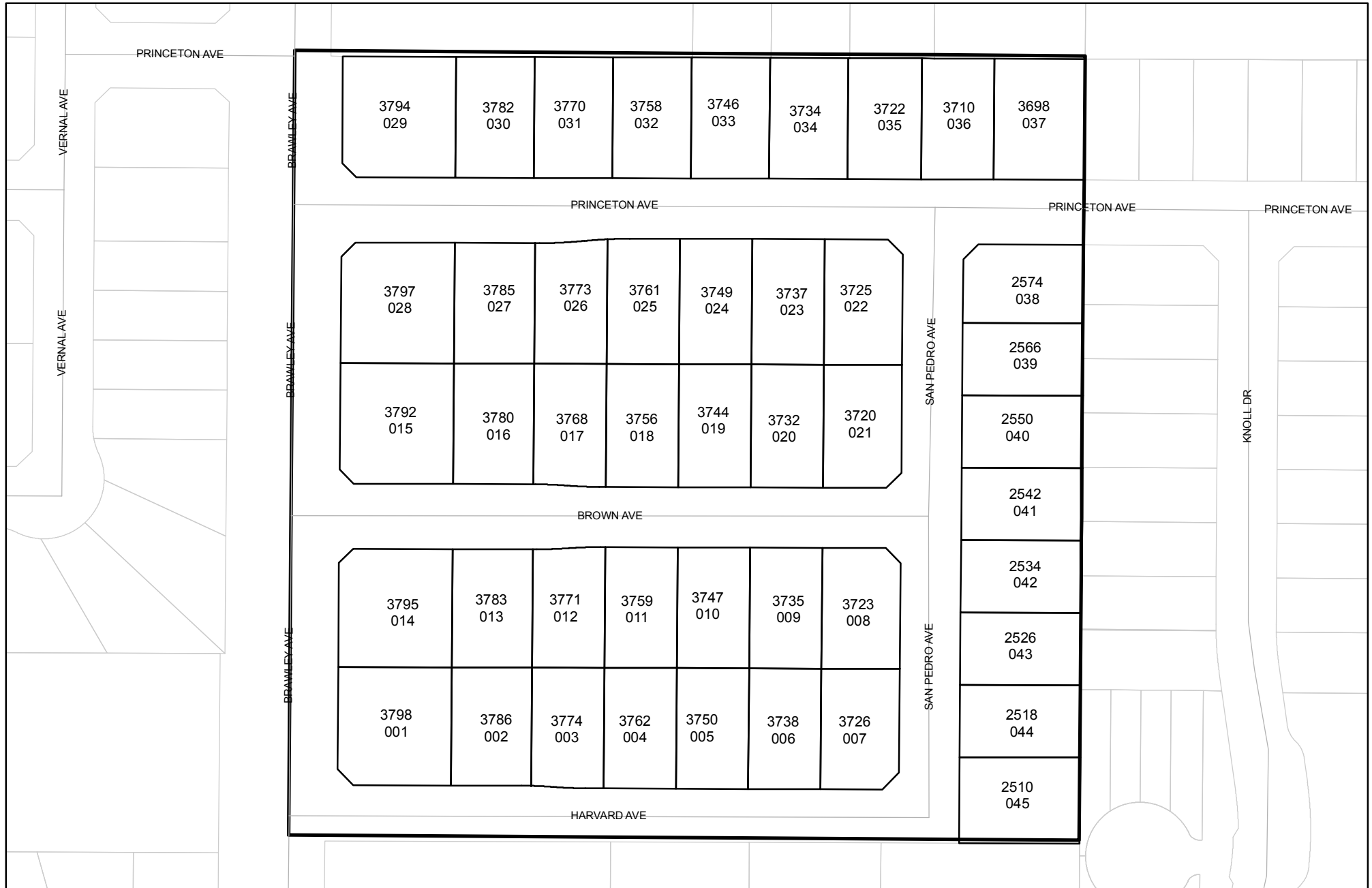




Prepared on Mon Oct 22 15:08:13 2018

Street Names, Addresses and (Lot Numbers) for T5285



FINAL MAP OF
TRACT NO. 5285
 IN THE CITY OF FRESNO, FRESNO COUNTY, CALIFORNIA
 SURVEYED AND PLATTED IN JULY 2005
 BY YAMABE & HORN ENGINEERING, INC.
 CONSISTING OF TWO SHEETS
 SHEET 2 OF 2

BASIS OF BEARINGS

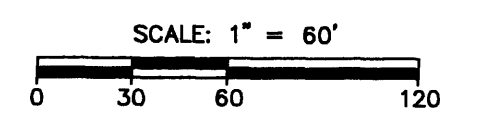
THE WEST LINE OF THE NORTHWEST QUARTER OF SECTION 25, T.13S., R. 19E., M.D.B.&M., AS SHOWN ON PARCEL MAP NO. 1874, RECORDED IN BOOK 11 OF PARCEL MAPS, PAGE 24, F.C.R., TAKEN TO BE NORTH 00°07'11" EAST.

LEGEND

- FOUND 3/4" IRON PIPE, DOWN 0.5' UNLESS OTHERWISE NOTED
- △ INDICATES STREETS PREVIOUSLY DELINEATED AND SHOWN ON THE MAP VICTORIA COLONY OF PLATS, PAGE 61 F.C.R. A ND ACCEPTED AND DECLARED PUBLIC RIGHT OF WAY RECORDED FEBRUARY 7, 1913, VOL. 29 OF MISCELLANEOUS PAGE 9 F.C.R.
- ▼ PUBLIC STREET EASEMENT NOW OFFERED FOR DEDICATION FOR PUBLIC USE.
- SET 3/4" IRON PIPE, 30" LONG, 4" UP IN 6" DIAMETER X 30" P.C.C. MONUMENT, DOWN 6" BELOW GROUND, TAGGED RCE 30501.
- C.R. DENOTES CORNER RECORDS ON FILE WITH FRESNO COUNTY SURVEYOR.
- P.E. INDICATES PEDESTRIAN EASEMENT NOW OFFERED FOR DEDICATION FOR PUBLIC USE.
- I.P. IRON PIPE
- ORFC OFFICIAL RECORDS FRESNO COUNTY
- F.C.R. FRESNO COUNTY RECORDS
- BCM BRASS CAP MONUMENT
- PPUE INDICATED PLANTING AND PUBLIC UTILITY EASEMENT NOW OFFERED FOR DEDICATION FOR PUBLIC USE.
- LE LANDSCAPE EASEMENT NOW OFFERED FOR DEDICATION FOR PUBLIC USE.
- CITY INDICATES CITY OF FRESNO BOUNDARY.
- COUNTY INDICATES COUNTY OF FRESNO BOUNDARY.
- () RECORD DATA PER PARCEL MAP NO.1874, RECORDED IN BK.11, PG. 24, F.C.R.
- (()) RECORD DATA PER PLAT OF VICTORIA COLONY, RECORDED IN VOL.4, OF PLATS PG. 61, F.C.R.
- [] RECORD DATA PER TRACT NO. 3751 RECORDED IN VOL. 44 OF PLATS AT PAGES 61 AND 62, F.C.R.
- { } RECORD DATA PER TRACT NO. 3545 RECORDED IN VOL. 41 OF PLATS AT PAGES 55 - 57, F.C.R.
- ▲ INDICATES RELINQUISHMENT OF DIRECT ACCESS RIGHTS.
- THE SHADED BLUE BORDER INDICATES LIMITS OF SUBDIVISION.

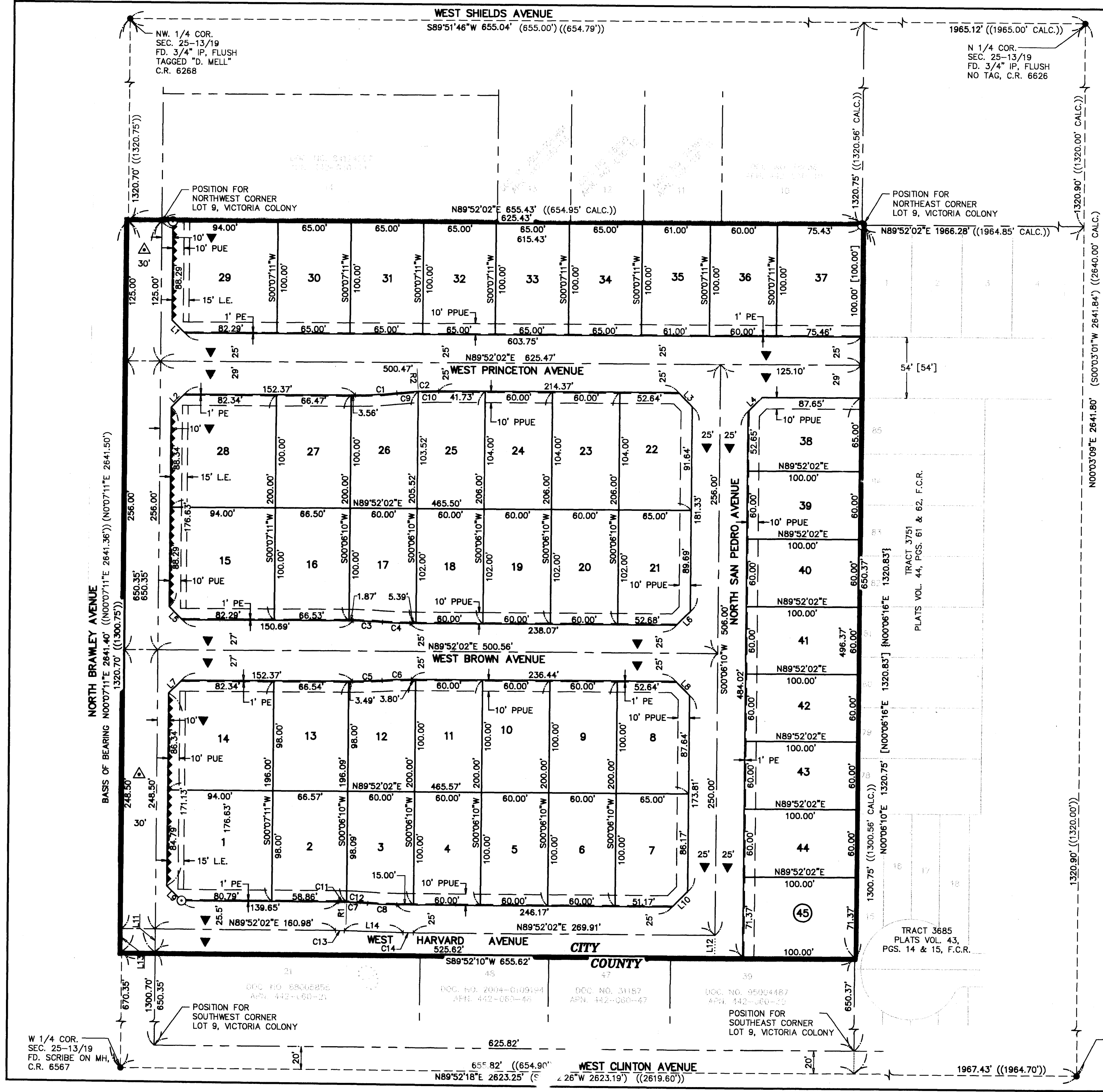
LINE TABLE			CURVE TABLE			
LINE	LENGTH	BEARING	CURVE	DELTA	RADIUS	LENGTH
L1	16.53'	S45°00'41"E	C1	6°07'41"	350.00'	37.43'
L2	16.53'	N44°59'37"E	C2	6°07'41"	350.00'	37.43'
L3	17.44'	S45°01'27"E	C3	4°20'41"	348.00'	26.39'
L4	17.50'	N44°59'06"E	C4	4°20'41"	348.00'	26.39'
L5	16.53'	N45°00'23"W	C5	4°20'40"	348.00'	26.39'
L6	17.46'	S44°59'37"W	C6	4°20'40"	348.00'	26.39'
L7	16.53'	S44°59'41"W	C7	4°20'42"	348.00'	26.39'
L8	17.44'	N45°01'00"W	C8	4°20'42"	348.00'	26.39'
L9	18.64'	S45°00'23"E	C9	3°08'08"	350.00'	19.15'
L10	19.60'	N44°59'06"E	C10	2°59'33"	350.00'	18.28'
L11	20.85'	S00°07'11"W	C11	1°16'26"	348.00'	7.74'
L12	20.87'	S00°06'10"W	C12	3°04'16"	348.00'	18.65'
L13	20.85'	S00°07'11"W	C13	1°24'15"	322.00'	7.89'
L14	52.73'	N88°43'43"W	C14	1°24'15"	372.00'	9.12'

RADIAL TABLE	
LINE	BEARING
R1	N01°08'28"E
R2	N03°07'31"W



PREPARED BY:
YAMABE & HORN ENGINEERING, INC.
 1300 EAST SHAW AVENUE, SUITE 176
 FRESNO, CA 93710
 PH. 559-244-3123 FAX 559-244-3120

C 1/4 COR.
 SEC. 25-13/19
 FD. F.C.B.C.M., DWN 3"
 TAGGED "LS 2737"
 C.R. 2928



W 1/4 COR.
 SEC. 25-13/19
 FD. SCRIBE ON MH,
 C.R. 6567

POSITION FOR
 SOUTHEAST CORNER
 LOT 9, VICTORIA COLONY

POSITION FOR
 SOUTHWEST CORNER
 LOT 9, VICTORIA COLONY