



Street Names, Addresses and (Lot Numbers) for T5283

Prepared on Tue Apr 02 14:06:19 2013



FINAL MAP OF
TRACT NO. 5283
 IN THE CITY OF FRESNO, FRESNO COUNTY, CALIFORNIA
 SURVEYED AND PLATTED IN DECEMBER 2004
 BY YAMABE & HORN ENGINEERING, INC.
 CONSISTING OF TWO SHEETS
SHEET 2 OF 2

NOTE
 SET 3/4" IRON PIPE, DOWN 0.5', TAGGED "RCE 30501"
 AT ALL LOT CORNERS, UNLESS OTHERWISE NOTED

OUTLET "A"
 OPEN SPACE
 FUTURE DEVELOPMENT

OUTLET "B"
 OPEN SPACE

OUTLET "C"
 OPEN SPACE

OUTLET "D"
 OPEN SPACE

OUTLET "E"
 OPEN SPACE

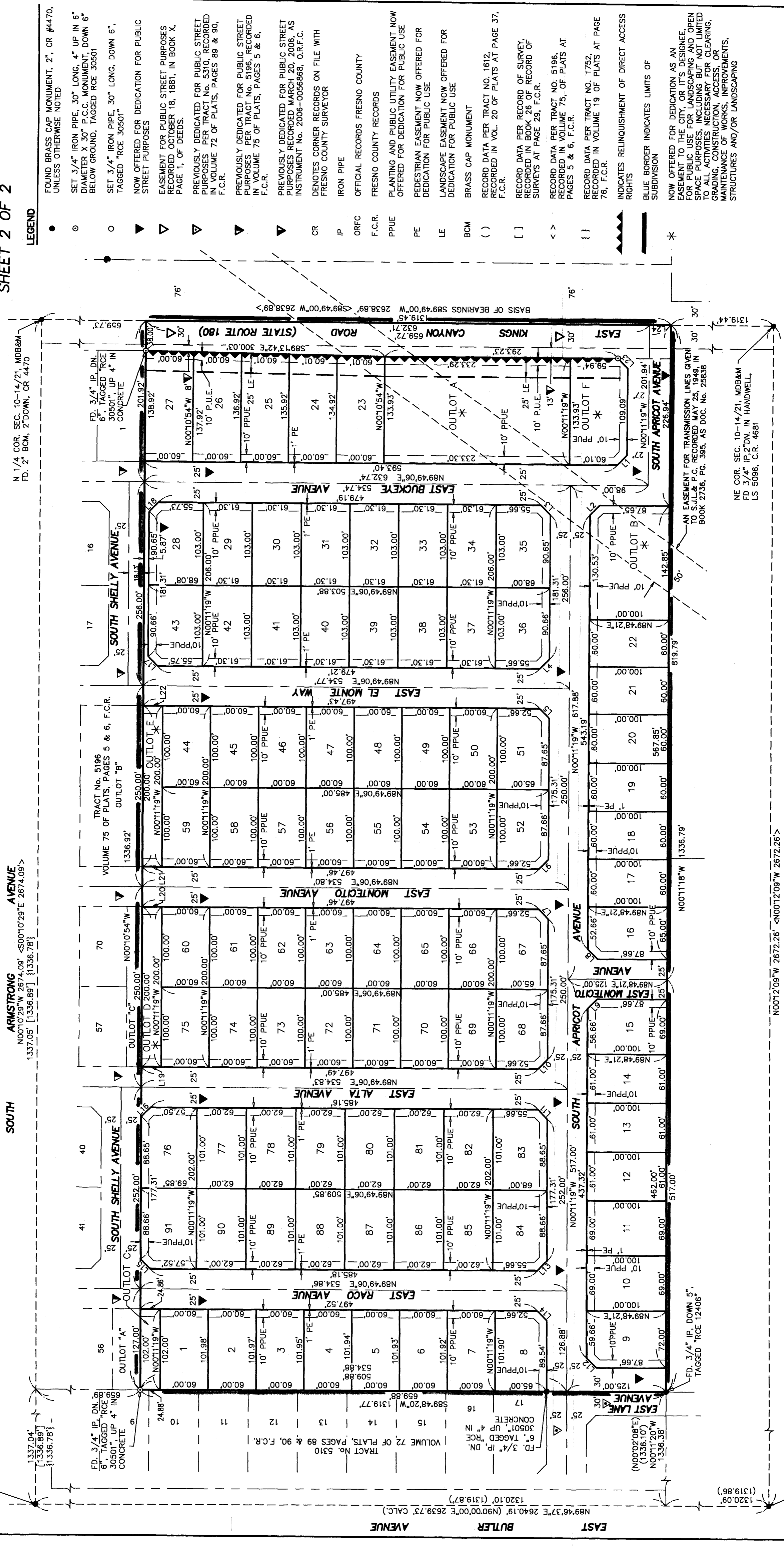
OUTLET "F"
 OPEN SPACE

BASIS OF BEARINGS:
 THE NORTH LINE OF THE NORTHEAST QUARTER OF SECTION
 10, TOWNSHIP 14 SOUTH, RANGE 21 EAST, MOUNT DIABLO
 BASE & MERIDIAN, AS SHOWN ON TRACT NO. 5196
 RECORDED IN VOLUME 75 OF PLATS AT PAGES 5 & 6, F.C.R.
 TAKEN TO BE SOUTH 89°49'00" WEST.

LINE	LENGTH	BEARING
L13	17.46'	S44°48'54"W
L14	17.46'	S44°50'37"W
L15	17.46'	S45°09'52"W
L16	17.46'	S44°47'28"W
L17	17.46'	S45°10'54"E
L18	17.46'	S44°48'17"W
L19	24.83'	N89°49'06"E
L20	24.80'	N89°49'06"E
L21	24.80'	N89°49'06"E
L22	24.77'	N89°49'06"E
L23	17.68'	S45°11'08"E
L24	27.01'	N89°49'00"E

LINE	LENGTH	BEARING
L1	17.45'	N44°48'54"E
L2	17.46'	S44°50'37"W
L3	17.46'	N45°10'43"W
L4	17.46'	N44°48'54"E
L5	17.46'	N45°10'43"W
L6	17.46'	N44°48'29"E
L7	17.46'	N45°10'43"W
L8	17.45'	S45°11'00"E
L9	17.45'	S44°48'55"W
L10	17.45'	N44°48'29"E
L11	17.46'	N45°10'43"W
L12	17.46'	N45°11'27"W

C 1/4 COR. SEC. 10-14/21, MDB&M
 FD 3/4" IP, 2" DOWN, TAGGED "LS
 7985", C.R. 4708



LEGEND

- FOUND BRASS CAP MONUMENT, 2", CR #4470, UNLESS OTHERWISE NOTED
- SET 3/4" IRON PIPE, 30" LONG, 4" UP IN 6" DIAMETER X 30" P.C.C. MONUMENT, DOWN 6" BELOW GROUND, TAGGED RCE 30501
- SET 3/4" IRON PIPE, 30" LONG, DOWN 6", TAGGED "RCE 30501"
- ▲ NOW OFFERED FOR DEDICATION FOR PUBLIC STREET PURPOSES
- ▲ EASEMENT FOR PUBLIC STREET PURPOSES RECORDED OCTOBER 18, 1881, IN BOOK X, PAGE 1, OF DEEDS.
- ▲ PREVIOUSLY DEDICATED FOR PUBLIC STREET PURPOSES PER TRACT NO. 5310, RECORDED IN VOLUME 72 OF PLATS, PAGES 88 & 90, F.C.R.
- ▲ PREVIOUSLY DEDICATED FOR PUBLIC STREET PURPOSES PER TRACT NO. 5196, RECORDED IN VOLUME 75 OF PLATS, PAGES 5 & 6, F.C.R.
- ▲ PREVIOUSLY DEDICATED FOR PUBLIC STREET PURPOSES RECORDED MARCH 20, 2006, AS INSTRUMENT NO. 2006-0056868, O.R.F.C.
- ▲ DENOTES CORNER RECORDS ON FILE WITH FRESNO COUNTY SURVEYOR
- CR IRON PIPE
- IP OFFICIAL RECORDS FRESNO COUNTY
- ORFC FRESNO COUNTY RECORDS
- F.C.R. F.C.R.
- PPUE PLANTING AND PUBLIC UTILITY EASEMENT NOW OFFERED FOR DEDICATION FOR PUBLIC USE
- PE PEDESTRIAN EASEMENT NOW OFFERED FOR DEDICATION FOR PUBLIC USE
- LE LANDSCAPE EASEMENT NOW OFFERED FOR DEDICATION FOR PUBLIC USE
- BCM BRASS CAP MONUMENT
- () RECORD DATA PER TRACT NO. 1612, RECORDED IN VOL. 20 OF PLATS AT PAGE 37, F.C.R.
- [] RECORD DATA PER RECORD OF SURVEY, RECORDED IN BOOK 26 OF RECORD OF SURVEYS AT PAGE 29, F.C.R.
- << RECORD DATA PER TRACT NO. 5196, RECORDED IN VOLUME 75, OF PLATS AT PAGES 5 & 6, F.C.R.
- { } RECORD DATA PER TRACT NO. 1752, RECORDED IN VOLUME 19 OF PLATS AT PAGE 76, F.C.R.
- ▲ INDICATES RELINQUISHMENT OF DIRECT ACCESS RIGHTS
- ▲ BLUE BORDER INDICATES LIMITS OF SUBDIVISION
- * NOW OFFERED FOR DEDICATION AS AN EASEMENT TO THE CITY, OR ITS DESIGNEE, FOR PUBLIC USE FOR LANDSCAPING AND OPEN SPACE PURPOSES, INCLUDING BUT NOT LIMITED TO ALL ACTIVITIES NECESSARY FOR CLEARING, GRADING, CONSTRUCTION, ACCESS, OR MAINTENANCE OF WORKS, IMPROVEMENTS, STRUCTURES AND/OR LANDSCAPING.

E 1/4 COR. SEC. 10-14/21, MDB&M
 POSITION FALLS ON MANHOLE
 ESTABLISHED FROM TICS, CR 6639

SOUTH TEMPERANCE AVENUE

SOUTH APRICOT AVENUE

SOUTH BUTLER AVENUE

SOUTH ARMSTRONG AVENUE

EAST APRICOT AVENUE

EAST TEMPERANCE AVENUE

EAST BUTLER AVENUE

EAST ARMSTRONG AVENUE

EAST MONTECITO AVENUE

EAST BUCKEYE AVENUE

EAST SHelly AVENUE

EAST ALTA AVENUE

EAST RACCO AVENUE

EAST EL MONTE WAY

EAST MONTECITO AVENUE

EAST APRICOT AVENUE

EAST TEMPERANCE AVENUE

EAST BUTLER AVENUE

EAST ARMSTRONG AVENUE

EAST MONTECITO AVENUE

EAST BUCKEYE AVENUE

EAST SHelly AVENUE

EAST ALTA AVENUE

EAST RACCO AVENUE

EAST EL MONTE WAY

EAST MONTECITO AVENUE

EAST APRICOT AVENUE

EAST TEMPERANCE AVENUE

EAST BUTLER AVENUE

EAST ARMSTRONG AVENUE

EAST MONTECITO AVENUE

EAST BUCKEYE AVENUE

EAST SHelly AVENUE

EAST ALTA AVENUE

EAST RACCO AVENUE

EAST EL MONTE WAY

EAST MONTECITO AVENUE

EAST APRICOT AVENUE

EAST TEMPERANCE AVENUE

EAST BUTLER AVENUE

EAST ARMSTRONG AVENUE

EAST MONTECITO AVENUE

EAST BUCKEYE AVENUE

EAST SHelly AVENUE

EAST ALTA AVENUE

EAST RACCO AVENUE

EAST EL MONTE WAY

EAST MONTECITO AVENUE

EAST APRICOT AVENUE

EAST TEMPERANCE AVENUE

EAST BUTLER AVENUE

EAST ARMSTRONG AVENUE

EAST MONTECITO AVENUE

EAST BUCKEYE AVENUE

EAST SHelly AVENUE

EAST ALTA AVENUE

EAST RACCO AVENUE

EAST EL MONTE WAY

EAST MONTECITO AVENUE

EAST APRICOT AVENUE

EAST TEMPERANCE AVENUE

EAST BUTLER AVENUE

EAST ARMSTRONG AVENUE

EAST MONTECITO AVENUE

EAST BUCKEYE AVENUE

EAST SHelly AVENUE

EAST ALTA AVENUE

EAST RACCO AVENUE

EAST EL MONTE WAY

EAST MONTECITO AVENUE

EAST APRICOT AVENUE

EAST TEMPERANCE AVENUE

EAST BUTLER AVENUE

EAST ARMSTRONG AVENUE

EAST MONTECITO AVENUE

EAST BUCKEYE AVENUE

EAST SHelly AVENUE

EAST ALTA AVENUE

EAST RACCO AVENUE

EAST EL MONTE WAY

EAST MONTECITO AVENUE

EAST APRICOT AVENUE

EAST TEMPERANCE AVENUE

EAST BUTLER AVENUE

EAST ARMSTRONG AVENUE

EAST MONTECITO AVENUE

EAST BUCKEYE AVENUE

EAST SHelly AVENUE

EAST ALTA AVENUE

EAST RACCO AVENUE

EAST EL MONTE WAY

EAST MONTECITO AVENUE

EAST APRICOT AVENUE

EAST TEMPERANCE AVENUE

EAST BUTLER AVENUE

EAST ARMSTRONG AVENUE

EAST MONTECITO AVENUE

EAST BUCKEYE AVENUE

EAST SHelly AVENUE

EAST ALTA AVENUE

EAST RACCO AVENUE

EAST EL MONTE WAY

EAST MONTECITO AVENUE

EAST APRICOT AVENUE

EAST TEMPERANCE AVENUE

EAST BUTLER AVENUE

EAST ARMSTRONG AVENUE

EAST MONTECITO AVENUE

EAST BUCKEYE AVENUE

EAST SHelly AVENUE

EAST ALTA AVENUE

EAST RACCO AVENUE

EAST EL MONTE WAY

EAST MONTECITO AVENUE

EAST APRICOT AVENUE

EAST TEMPERANCE AVENUE

EAST BUTLER AVENUE

EAST ARMSTRONG AVENUE

EAST MONTECITO AVENUE

EAST BUCKEYE AVENUE

EAST SHelly AVENUE

EAST ALTA AVENUE

EAST RACCO AVENUE

EAST EL MONTE WAY

EAST MONTECITO AVENUE

EAST APRICOT AVENUE

EAST TEMPERANCE AVENUE

EAST BUTLER AVENUE

EAST ARMSTRONG AVENUE

EAST MONTECITO AVENUE

EAST BUCKEYE AVENUE

EAST SHelly AVENUE

EAST ALTA AVENUE

EAST RACCO AVENUE

EAST EL MONTE WAY

EAST MONTECITO AVENUE

EAST APRICOT AVENUE

EAST TEMPERANCE AVENUE

EAST BUTLER AVENUE

EAST ARMSTRONG AVENUE

EAST MONTECITO AVENUE

EAST BUCKEYE AVENUE

EAST SHelly AVENUE

EAST ALTA AVENUE

EAST RACCO AVENUE

EAST EL MONTE WAY

EAST MONTECITO AVENUE

EAST APRICOT AVENUE

EAST TEMPERANCE AVENUE

EAST BUTLER AVENUE

EAST ARMSTRONG AVENUE

EAST MONTECITO AVENUE

EAST BUCKEYE AVENUE

EAST SHelly AVENUE

EAST ALTA AVENUE

EAST RACCO AVENUE

EAST EL MONTE WAY

EAST MONTECITO AVENUE

EAST APRICOT AVENUE

EAST TEMPERANCE AVENUE

EAST BUTLER AVENUE

EAST ARMSTRONG AVENUE

EAST MONTECITO AVENUE

EAST BUCKEYE AVENUE

EAST SHelly AVENUE

EAST ALTA AVENUE

EAST RACCO AVENUE

EAST EL MONTE WAY

EAST MONTECITO AVENUE

EAST APRICOT AVENUE

EAST TEMPERANCE AVENUE

EAST BUTLER AVENUE

EAST ARMSTRONG AVENUE

EAST MONTECITO AVENUE

EAST BUCKEYE AVENUE

EAST SHelly AVENUE

EAST ALTA AVENUE

EAST RACCO AVENUE

EAST EL MONTE WAY

EAST MONTECITO AVENUE

EAST APRICOT AVENUE

EAST TEMPERANCE AVENUE

EAST BUTLER AVENUE

EAST ARMSTRONG AVENUE

EAST MONTECITO AVENUE

EAST BUCKEYE AVENUE

EAST SHelly AVENUE

EAST ALTA AVENUE

EAST RACCO AVENUE

EAST EL MONTE WAY

EAST MONTECITO AVENUE

EAST APRICOT AVENUE

EAST TEMPERANCE AVENUE

EAST BUTLER AVENUE

EAST ARMSTRONG AVENUE

EAST MONTECITO AVENUE

EAST BUCKEYE AVENUE

EAST SHelly AVENUE

EAST ALTA AVENUE

EAST RACCO AVENUE

EAST EL MONTE WAY

EAST MONTECITO AVENUE

EAST APRICOT AVENUE

EAST TEMPERANCE AVENUE

EAST BUTLER AVENUE

EAST ARMSTRONG AVENUE

EAST MONTECITO AVENUE

EAST BUCKEYE AVENUE

EAST SHelly AVENUE

EAST ALTA AVENUE

EAST RACCO AVENUE

EAST EL MONTE WAY