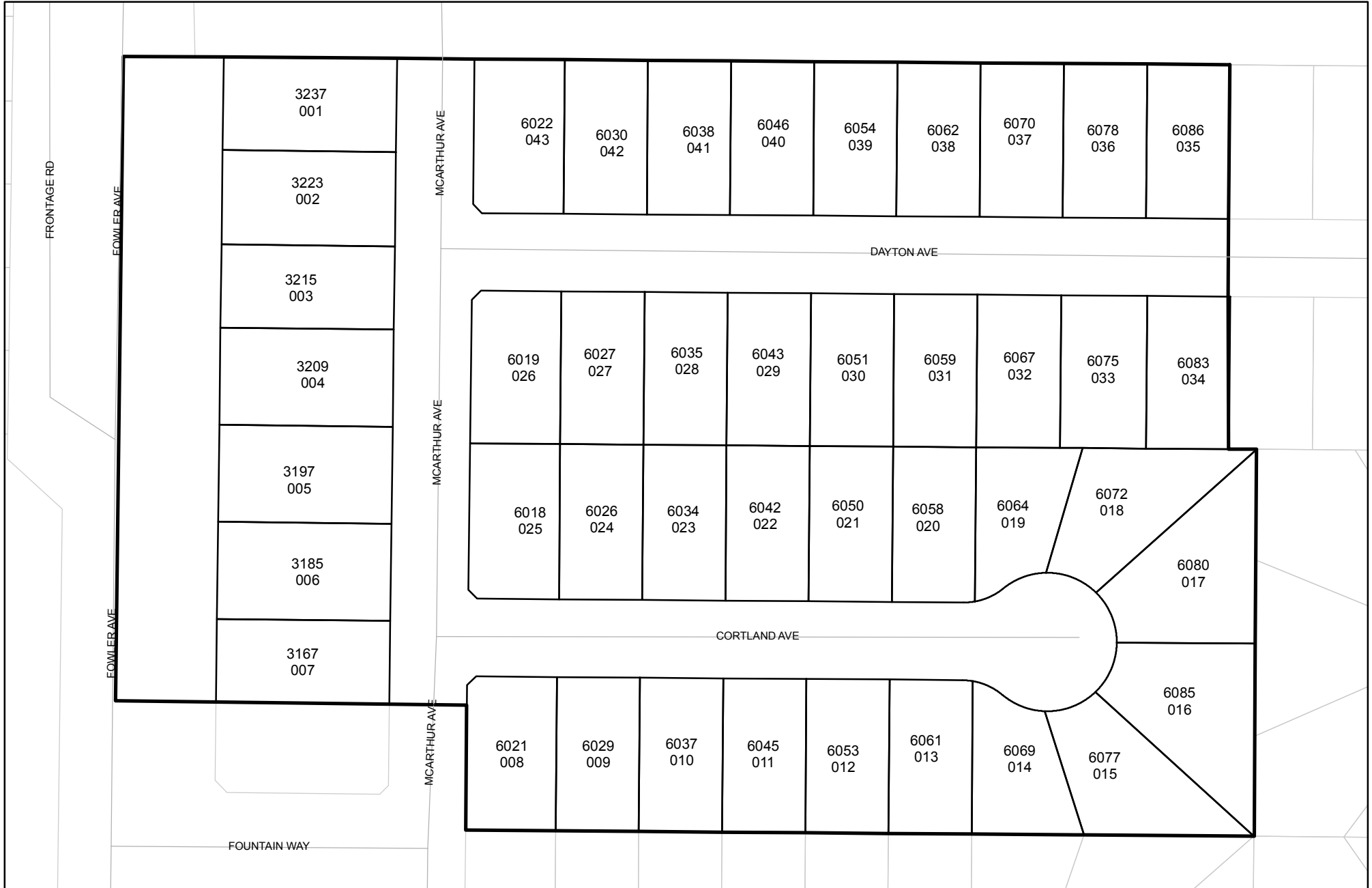




Prepared on Fri Mar 16 21:43:38 2018

# Street Names, Addresses and (Lot Numbers) for T5281



# FINAL MAP OF TRACT NO. 5281

CONSISTING OF 2 SHEETS, SHEET 2 OF 2

**COLBY PARK**  
 PHASE III OF TENTATIVE MAP NO. 5189  
 IN THE CITY OF FRESNO, COUNTY OF FRESNO, STATE OF CALIFORNIA  
 SURVEYED AND PLATTED SEPTEMBER 2004, BY QUAD KNOPF, INC.

CURVE TABLE			
CURVE	DELTA	RADIUS	LENGTH
C1	10°43'16"	45.00	8.42
C2	29°03'59"	45.00	22.83
C3	38°06'52"	50.00	33.26
C4	45°50'12"	50.00	40.00
C5	38°06'52"	50.00	33.26
C6	30°33'55"	45.00	24.01
C7	9°13'21"	45.00	7.24
C8	39°47'15"	45.00	31.25
C9	29°34'32"	50.00	226.52
C10	39°47'16"	45.00	31.25

LINE TABLE		
LINE	LENGTH	BEARING
L1	9.03	N45°08'29"W
L2	9.07	N44°51'31"E
L3	9.03	N45°08'29"W
L4	9.07	N44°51'31"E

### LEGEND

- ▲ SECTION CORNER FOUND AND ACCEPTED AS DESCRIBED
- FOUND 3/4" IRON PIPE TAGGED LS 6919 PER TRACT NO. 5189, RECORDED IN VOL. 70 OF PLATS, PAGES 17 & 18, O.R.F.C.
- ⊙ FOUND 3/4" I.P., 30" LONG, 4" UP IN P.C.C., 6" DIA. MONUMENT, AT 6" BELOW FINISH GRADE, TAGGED LS 6919 PER TRACT NO. 5189, RECORDED IN VOL. 70 OF PLATS, PAGES 17 & 18, O.R.F.C.
- ◆ SET 3/4" X 30" IRON PIPE TAGGED LS 6919 ON LOT LINE AS SHOWN AT 20.00' FROM NEAREST LOT CORNER (DISTANCES SHOWN ARE TO THE TRUE CORNER)
- P.P.U.E. PLANTING AND PUBLIC UTILITY EASEMENT NOW OFFERED FOR DEDICATION FOR PUBLIC USE
- L.E. LANDSCAPE EASEMENT NOW OFFERED FOR DEDICATION FOR PUBLIC USE
- C.R. CORNER RECORD ON FILE WITH FRESNO COUNTY SURVEYOR'S OFFICE
- (R) RADIAL BEARING
- O.R.F.C. OFFICIAL RECORDS FRESNO COUNTY
- BLUE BORDER INDICATES LIMITS OF SUBDIVISION
- ▲▲▲▲ RELINQUISHMENT OF DIRECT ACCESS RIGHTS
- \* INDICATES AREA NOW OFFERED FOR DEDICATION FOR PUBLIC STREET AND UTILITY PURPOSES
- [ ] RECORD DATA PER TRACT NO. 5189, REC. IN VOL. 70 OF PLATS, AT PGS. 17 & 18, F.C.R.
- ( ) RECORD DATA PER LOT LINE ADJUSTMENT NO. 2003-42, RECORDED AS INSTRUMENT NO. 2003-0302826 OF OFFICIAL RECORDS.

### NOTES:

- SET 3/4" BY 30" IRON PIPE, AT 6" BELOW SURFACE, TAGGED LS 6919 AT ALL LOT CORNERS, BEGINNING AND ENDING OF CURVES AND ANGLE POINTS OF RIGHT OF WAY, UNLESS NOTED OTHERWISE.

SCALE: 1" = 60'



### BASIS OF BEARINGS

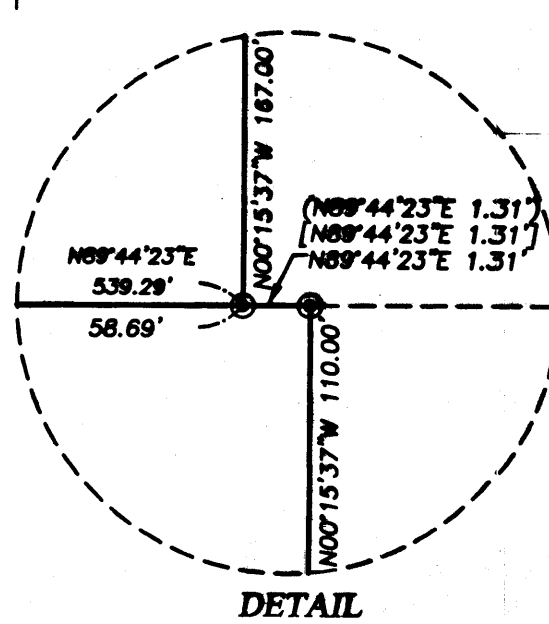
THE WEST LINE OF THE SOUTHWEST QUARTER OF SECTION 22-13/21 BEING NORTH 00°01'20" WEST PER FINAL MAP OF TRACT NO. 5189 RECORDED IN VOL. 70 OF PLATS, AT PAGES 17 & 18, O.R.F.C.

SOUTH 1/4 CORNER SEC. 22-13/21 FOUND 3" CAPPED PIPE, 10" DEEP PER TRACT 5189, FIT C.R. 1F1606

WEST 1/4 COR. SEC. 22-13/21 FOUND 3/4" IRON PIPE, 6" DEEP, TAGGED LS 6919, PER TRACT 5189, VOL. 70, PAGES 17 & 18, O.R.F.C. FIT C.R. 5608

TRACT NO. 7143 VOL. 19, P. 85-86, O.R.F.C.

43' PREVIOUSLY DEEDED FOR PUBLIC STREET PURPOSES PER DOC. NO. 2004-0107698, O.R.F.C.



SOUTHWEST CORNER SEC. 22-13/21 FOUND 3/4" IRON PIPE, 6" DEEP, TAGGED LS 6919, PER TRACT 5189, VOL. 70, PAGE 17 & 18, O.R.F.C. FIT C.R. 4154

(N 89°44'23" E 799.00')  
 (N 89°44'23" E 799.00')  
 (N 89°44'23" E 799.00')

(N 89°44'23" E 568.58')  
 (N 89°44'23" E 568.58')

(S 89°38'18" W 2648.19')  
 (S 89°38'18" W 2648.19')