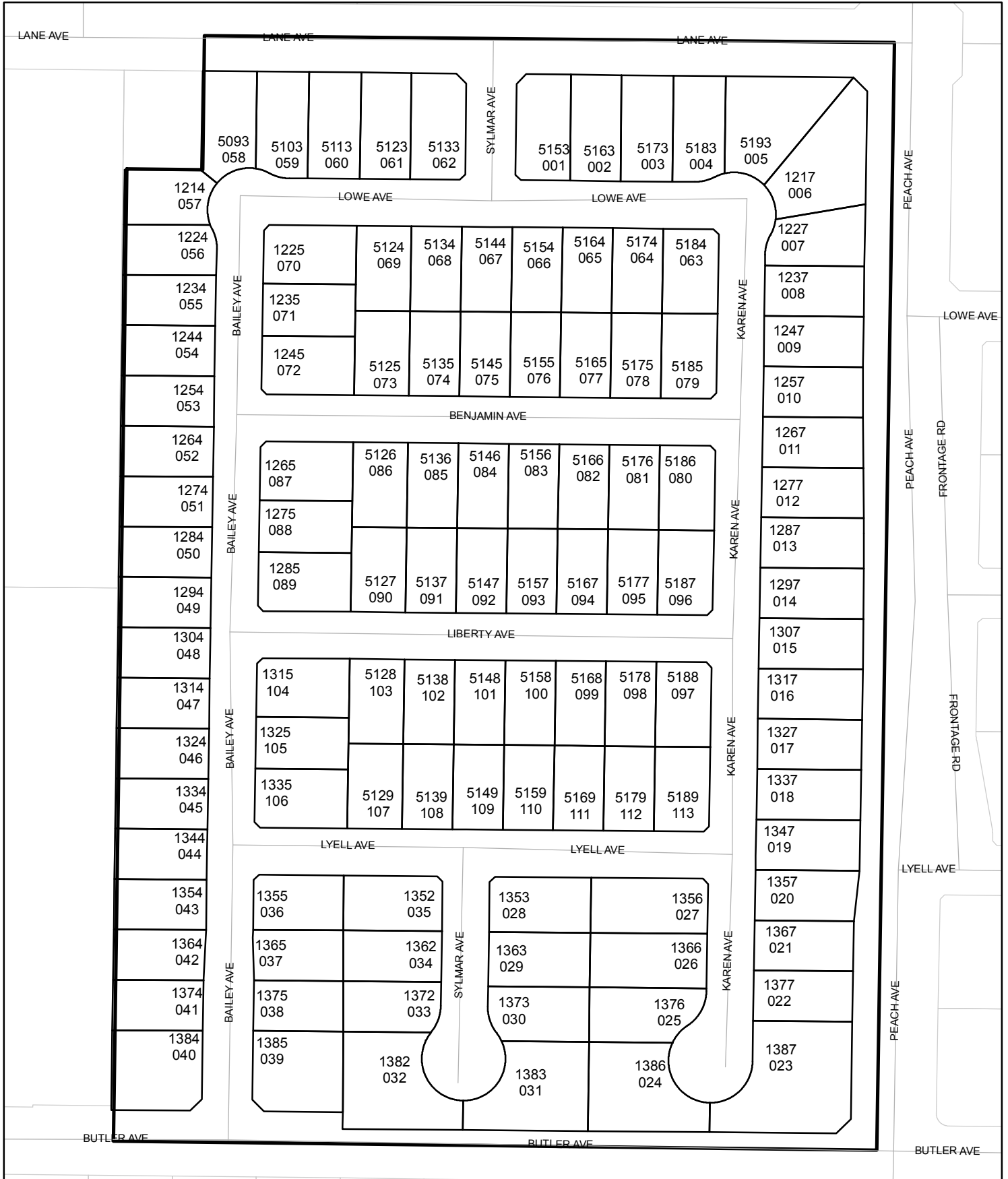




Street Names, Addresses and (Lot Numbers) for T5262

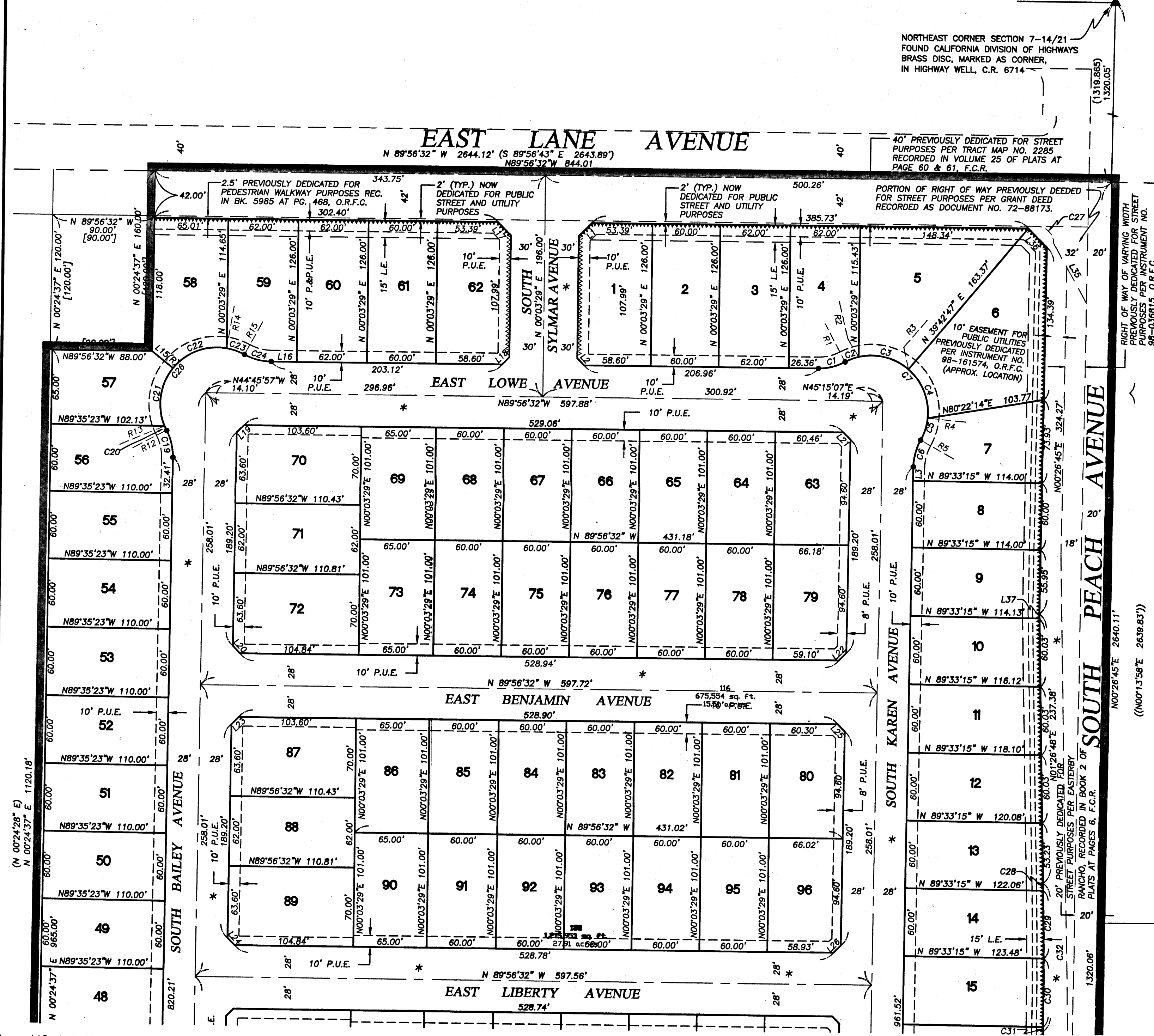
Prepared on Tue Sep 12 22:33:05 2017



FINAL MAP OF TRACT NO. 5262

RUSTIC OAKS
IN THE CITY OF FRESNO, COUNTY OF FRESNO, STATE OF CALIFORNIA

NORTHEAST CORNER SECTION 7-14/21
FOUND CALIFORNIA DIVISION OF HIGHWAYS
BRASS DISC, MARKED AS CORNER,
IN HIGHWAY WELL, C.R. 6714



LINE TABLE		
LINE	LENGTH	BEARING
L1	16.43	N45°03'29"E
L2	9.05	N44°56'32"W
L3	12.43	N00°26'45"E
L4	2.42	N00°26'45"E
L5	24.06	N45°14'53"E
L6(R)	35.15	N00°26'45"E
L7	9.02	N44°44'53"W
L8	9.08	N45°14'03"E
L9(R)	35.00	N00°24'37"E
L10	20.00	N00°24'37"E
L11	9.02	N44°45'57"W
L12	9.08	N45°14'03"E
L13	19.75	N44°46'12"W
L14	19.75	N45°13'48"E
L15(R)	23.81	N51°23'17"W
L16	22.52	N89°56'32"W
L17	16.43	N44°56'32"W
L18	9.05	N45°03'29"E
L19	9.08	N45°14'03"E
L20	9.02	N44°45'57"W
L21	9.02	N44°44'53"W
L22	9.08	N45°15'07"E
L23	9.08	N45°14'03"E
L24	9.02	N44°45'57"W
L25	9.02	N44°44'53"W
L26	9.08	N45°15'07"E
L27	9.02	N44°44'53"W
L28	9.08	N45°14'03"E
L29	9.02	N44°45'57"W
L30	9.08	N45°15'07"E
L31	22.00	N89°33'15"W
L32	2.20	N00°24'37"E
L33	10.43	N00°24'37"E
L34	7.80	N00°24'37"E
L35	60.15	N29°28'17"W
L36	23.44	N44°43'11"W
L37	4.06	N01°26'48"W
L38	21.85	N69°39'06"W

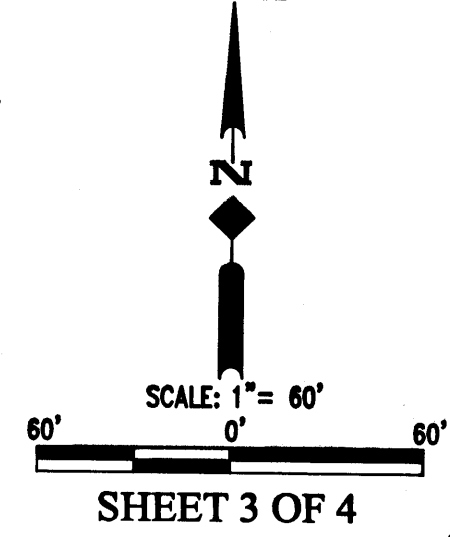
CURVE TABLE			
CURVE	DELTA	RADIUS	LENGTH
C1	28°21'27"	50.00	24.75
C2	14°38'37"	50.00	12.78
C3	5°51'20"	50.00	47.00
C4	55°00'14"	50.00	48.00
C5	23°36'01"	50.00	20.60
C6	28°21'28"	50.00	24.75
C7	147°06'12"	50.00	128.38
C8	90°00'00"	50.00	78.54
C9	113°53'08"	50.00	99.38
C10	32°03'31"	50.00	27.98
C11	55°56'39"	50.00	48.82
C12	235°56'39"	50.00	205.90
C13	39°47'16"	45.00	31.25
C14	13°19'53"	50.00	11.63
C15	116°27'23"	50.00	101.63
C16	127°02'43"	50.00	110.87
C17	2°44'33"	50.00	2.39
C18	39°47'16"	45.00	31.25
C19	28°21'28"	50.00	24.75
C20	4°53'40"	50.00	4.27
C21	61°39'53"	50.00	53.81
C22	60°40'27"	50.00	52.95
C23	19°07'46"	50.00	16.69
C24	28°21'28"	50.00	24.75
C25	259°34'31"	50.00	226.52
C26	146°21'46"	50.00	127.72
C27	90°23'17"	15.00	23.66
C28	00°05'54"	3962.00	6.80
C29	00°52'05"	3962.00	60.02
C30	00°52'04"	3962.00	60.00
C31	00°03'30"	3962.00	4.04
C32	01°53'33"	3962.00	130.86
C33	20°17'54"	100.00	35.43
C34	20°17'54"	80.00	28.34
C35	20°17'54"	120.00	42.51

- LEGEND**
- ▲ SECTION CORNER FOUND AND ACCEPTED AS DESCRIBED
 - ◆ SET 3/4" IRON PIPE TAGGED LS 6919 ON LOT LINE AS SHOWN AT 5.00' FROM NEAREST LOT CORNER (DISTANCES SHOWN ARE TO THE TRUE CORNER)
 - SET 3/4" IRON PIPE, 30" LONG, 6" BELOW FINISH GRADE, TAGGED LS 6919
 - () RECORD DATA, OR DATA ESTABLISHED THEREFROM, PER TRACT MAP NO. 2285 RECORDED IN VOLUME 25, PAGES 60 & 61, F.C.R.
 - (()) RECORD DATA, OR DATA ESTABLISHED THEREFROM, PER TRACT MAP NO. 2717 RECORDED IN BOOK 32 OF PLATS AT PAGE 5, F.C.R.
 - [] RECORD DATA, OR DATA ESTABLISHED THEREFROM, PER GRANT DEED RECORDED JULY 15, 1993 AS DOCUMENT NO. 93106324, F.C.R.
 - ▬ SHADED BORDER INDICATES LIMITS OF SUBDIVISION
 - ▲▲▲▲▲ RELINQUISHMENT OF DIRECT ACCESS RIGHTS
 - ▲▲▲▲▲ RELINQUISHMENT OF DIRECT VEHICLE ACCESS RIGHTS
 - * INDICATES AREA NOW OFFERED FOR DEDICATION FOR PUBLIC STREET AND UTILITY PURPOSES
 - P.U.E. PUBLIC UTILITY EASEMENT NOW OFFERED FOR DEDICATION FOR PUBLIC USE
 - L.E. LANDSCAPE EASEMENT NOW OFFERED FOR DEDICATION FOR PUBLIC USE
 - P.E. PEDESTRIAN EASEMENT NOW OFFERED FOR DEDICATION FOR PUBLIC USE
 - (R) RADIAL BEARING
 - F.C.R. FRESNO COUNTY RECORDS
 - C.R. CORNER RECORD ON FILE WITH FRESNO COUNTY SURVEYOR'S OFFICE

RADIAL TABLE	
RADIAL	BEARING
R1	N28°17'59"W
R2	N13°39'31"W
R3	N40°11'58"E
R4	N84°47'48"W
R5	N61°11'48"W
R8	N61°11'21"E
R9	N63°57'14"E
R10	N51°55'50"W
R11	N49°48'08"W
R12	N62°03'09"E
R13	N66°56'50"E
R14	N09°17'10"E
R15	N28°24'56"E

- NOTES:**
- SET 3/4" BY 30" IRON PIPE, 6" BELOW SURFACE, TAGGED LS 6919, AT ALL LOT CORNERS, BEGINNING AND ENDING OF CURVES, AND ANGLE POINTS OF RIGHT OF WAY

BASIS OF BEARINGS
THE EAST LINE OF THE NORTHEAST QUARTER OF SECTION 7-14/21 BEING SOUTH 00°26'45" WEST PER TRACT MAP NO. 2285 AS FILED IN VOLUME 25 OF PLATS, PAGES 60 & 61, OFFICIAL RECORDS FRESNO COUNTY.



FINAL MAP OF TRACT NO. 5262

RUSTIC OAKS
IN THE CITY OF FRESNO, COUNTY OF FRESNO, STATE OF CALIFORNIA

BASIS OF BEARINGS

THE EAST LINE OF THE NORTHEAST QUARTER OF SECTION 7-14/21 BEING SOUTH 00°26'45" WEST PER TRACT MAP NO. 2285 AS FILED IN VOLUME 25 OF PLATS, PAGES 60 & 61, F.C.R.

NORTHEAST CORNER SECTION 7-14/21 FOUND CALIFORNIA DIVISION OF HIGHWAYS BRASS DISC, MARKED AS CORNER IN HIGHWAY WELL, C.R. 6714

LINE TABLE		
LINE	LENGTH	BEARING
L1	16.43	N45°03'29"E
L2	9.05	N44°56'32"W
L3	12.43	N00°26'45"E
L4	2.42	N00°26'45"E
L5	24.06	N45°14'53"E
L6(R)	35.15	N00°26'45"E
L7	9.02	N44°44'53"W
L8	9.08	N45°14'03"E
L9(R)	35.00	N00°24'37"E
L10	20.00	N00°24'37"E
L11	9.02	N44°45'57"W
L12	9.08	N45°14'03"E
L13	19.75	N44°46'12"W
L14	19.75	N45°13'48"E
L15(R)	23.81	N51°23'17"W
L16	22.52	N89°56'32"W
L17	16.43	N44°56'32"W
L18	9.05	N45°03'29"E
L19	9.08	N45°14'03"E
L20	9.02	N44°45'57"W
L21	9.02	N44°44'53"W
L22	9.08	N45°15'07"E
L23	9.08	N45°14'03"E
L24	9.02	N44°44'53"W
L25	9.02	N44°45'57"W
L26	9.08	N45°15'07"E
L27	9.02	N44°44'53"W
L28	9.08	N45°14'03"E
L29	9.02	N44°45'57"W
L30	9.08	N45°15'07"E
L31	22.00	N89°33'15"W
L32	2.20	N00°24'37"E
L33	10.43	N00°24'37"E
L34	7.80	N00°24'37"E
L35	60.15	N29°28'17"W
L36	23.44	N44°43'11"W
L37	4.06	N01°26'48"W
L38	21.85	N89°39'06"W

CURVE TABLE			
CURVE	DELTA	RADIUS	LENGTH
C1	28°21'27"	50.00	24.75
C2	14°38'37"	50.00	12.78
C3	53°51'20"	50.00	47.00
C4	55°00'14"	50.00	48.00
C5	23°36'01"	50.00	20.60
C6	28°21'28"	50.00	24.75
C7	147°06'12"	50.00	128.38
C8	90°00'00"	50.00	78.54
C9	113°53'08"	50.00	99.38
C10	32°03'31"	50.00	27.98
C11	55°56'39"	50.00	48.82
C12	235°56'39"	50.00	205.90
C13	39°47'16"	45.00	31.25
C14	13°19'53"	50.00	11.63
C15	116°27'23"	50.00	101.63
C16	127°02'43"	50.00	110.87
C17	2°44'33"	50.00	2.39
C18	39°47'16"	45.00	31.25
C19	28°21'28"	50.00	24.75
C20	4°53'40"	50.00	4.27
C21	61°39'53"	50.00	53.81
C22	60°40'27"	50.00	52.95
C23	19°07'46"	50.00	16.69
C24	28°21'28"	50.00	24.75
C25	259°34'31"	50.00	226.52
C26	146°21'46"	50.00	127.72
C27	90°23'17"	15.00	23.66
C28	00°05'54"	3962.00	6.80
C29	00°52'05"	3962.00	60.02
C30	00°52'04"	3962.00	60.00
C31	00°03'30"	3962.00	4.04
C32	01°53'33"	3962.00	130.86
C33	20°17'54"	100.00	35.43
C34	20°17'54"	80.00	28.34
C35	20°17'54"	120.00	42.51

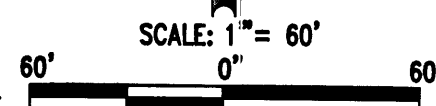
RADIAL TABLE	
RADIAL	BEARING
R1	N28°17'59"W
R2	N13°39'31"W
R3	N40°11'58"E
R4	N84°47'48"W
R5	N61°11'48"W
R6	N50°37'21"E
R7	N63°57'14"E
R8	N51°55'50"W
R9	N49°48'08"W
R10	N62°03'09"E
R11	N66°56'50"E
R12	N09°17'10"E
R13	N28°24'56"E
R14	N28°24'56"E
R15	N28°24'56"E

LEGEND

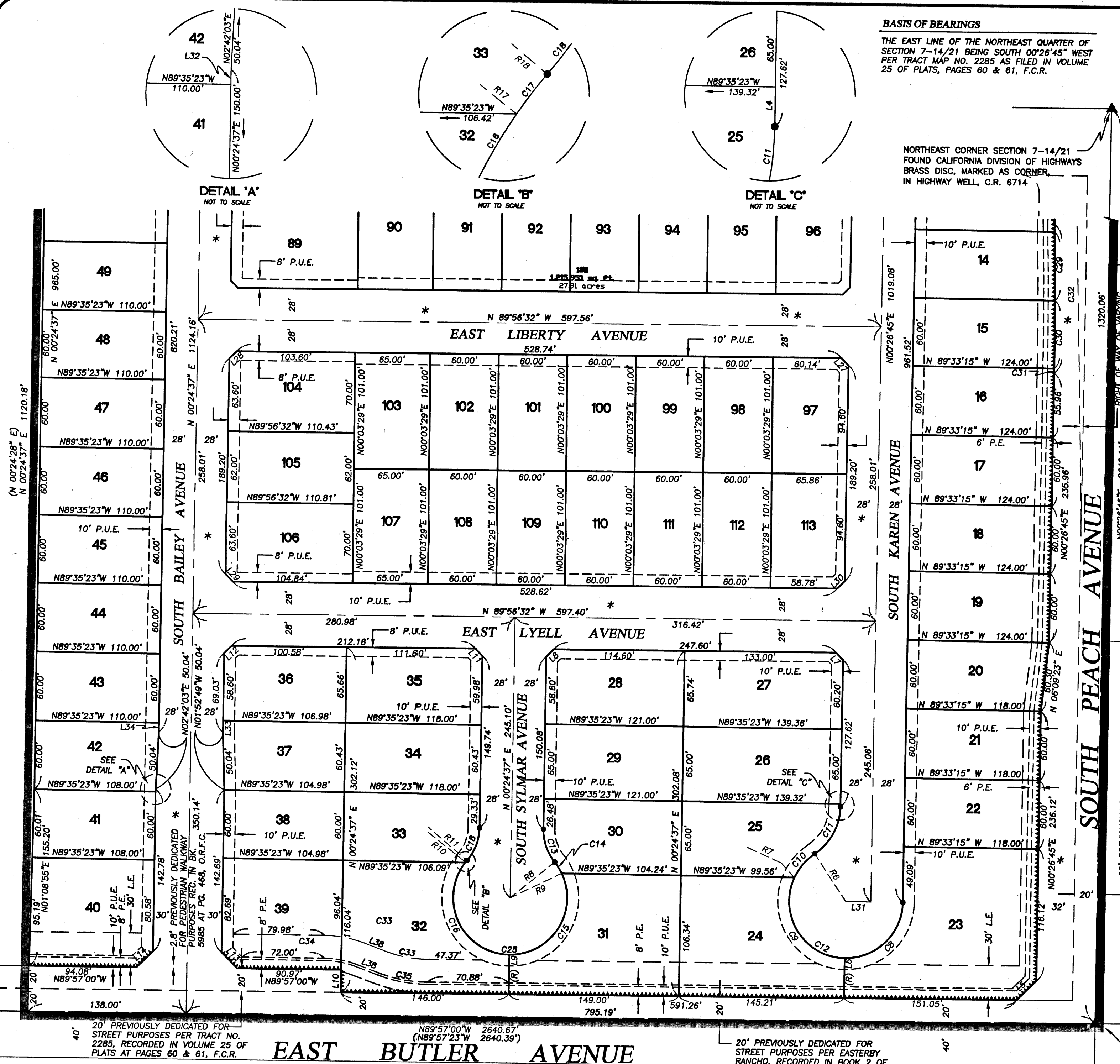
- ▲ SECTION CORNER FOUND AND ACCEPTED AS DESCRIBED
- ◆ SET 3/4" IRON PIPE TAGGED LS 6919 ON LOT LINE AS SHOWN AT 5.00' FROM NEAREST LOT CORNER (DISTANCES SHOWN ARE TO THE TRUE CORNER)
- SET 3/4" IRON PIPE, 30" LONG, 6" BELOW FINISH GRADE, TAGGED LS 6919
- () RECORD DATA, OR DATA ESTABLISHED THEREFROM, PER TRACT MAP NO. 2285 RECORDED IN VOLUME 25, PAGES 60 & 61, F.C.R.
- (()) RECORD DATA, OR DATA ESTABLISHED THEREFROM, PER TRACT MAP NO. 2717 RECORDED IN BOOK 32 OF PLATS AT PAGE 5, F.C.R.
- [] RECORD DATA, OR DATA ESTABLISHED THEREFROM, PER GRANT DEED RECORDED JULY 15, 1993 AS DOCUMENT NO. 93106324, F.C.R.
- ▬ SHADED BORDER INDICATES LIMITS OF SUBDIVISION
- ▲▲▲▲▲ RELINQUISHMENT OF DIRECT ACCESS RIGHTS
- ▲▲▲▲▲ RELINQUISHMENT OF DIRECT VEHICLE ACCESS RIGHTS
- * INDICATES AREA NOW OFFERED FOR DEDICATION FOR PUBLIC STREET AND UTILITY PURPOSES
- P.U.E. PUBLIC UTILITY EASEMENT NOW OFFERED FOR DEDICATION FOR PUBLIC USE
- L.E. LANDSCAPE EASEMENT NOW OFFERED FOR DEDICATION FOR PUBLIC USE
- P.E. PEDESTRIAN EASEMENT NOW OFFERED FOR DEDICATION FOR PUBLIC USE
- (R) RADIAL BEARING
- F.C.R. FRESNO COUNTY RECORDS
- C.R. CORNER RECORD ON FILE WITH FRESNO COUNTY SURVEYOR'S OFFICE

NOTES:

1. SET 3/4" IRON PIPE, 30" LONG, 6" BELOW SURFACE, TAGGED LS 6919, AT ALL LOT CORNERS, BEGINNING AND ENDING OF CURVES, AND ANGLE POINTS OF RIGHT OF WAY



EAST 1/4 CORNER SEC. 7-14/21 POSITION FALLS ON MANHOLE, ESTABLISHED



DETAIL 'A' NOT TO SCALE

DETAIL 'B' NOT TO SCALE

DETAIL 'C' NOT TO SCALE

RIGHT OF WAY OF VARYING WIDTH PREVIOUSLY DEDICATED FOR STREET PURPOSES PER INSTRUMENT NO. 98-036875, O.R.F.C.

20' PREVIOUSLY DEDICATED FOR STREET PURPOSES PER EASTERBY RANCHO, RECORDED IN BOOK 2 OF PLATS AT PAGES 6, F.C.R.

20' PREVIOUSLY DEDICATED FOR STREET PURPOSES PER TRACT NO. 2285, RECORDED IN VOLUME 25 OF PLATS AT PAGES 60 & 61, F.C.R.

20' PREVIOUSLY DEDICATED FOR STREET PURPOSES PER EASTERBY RANCHO, RECORDED IN BOOK 2 OF PLATS AT PAGES 6, F.C.R.

20' PREVIOUSLY DEDICATED FOR STREET PURPOSES PER TRACT NO. 2285, RECORDED IN VOLUME 25 OF PLATS AT PAGES 60 & 61, F.C.R.