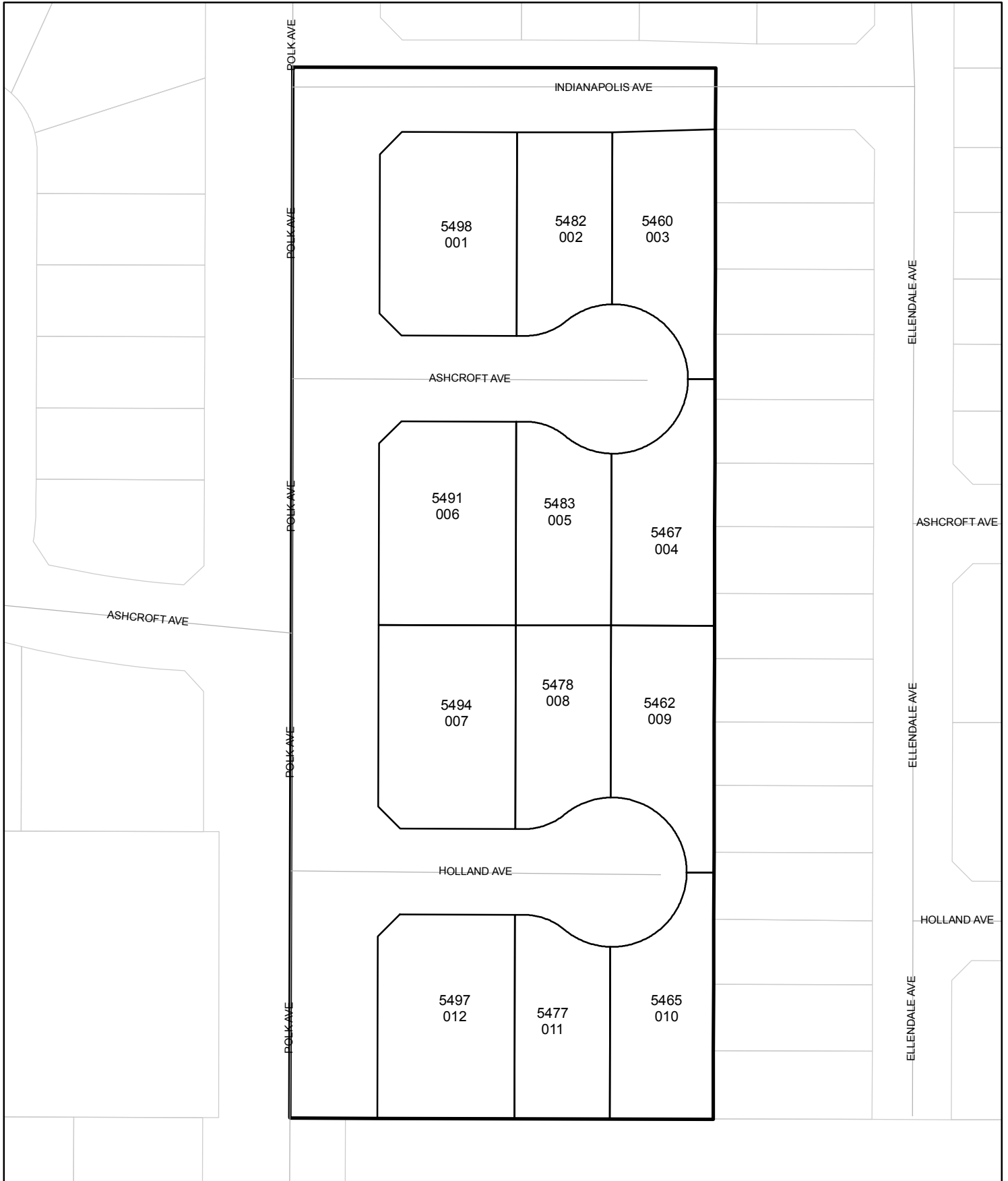




Street Names, Addresses and (Lot Numbers) for T5259

Prepared on Tue Apr 02 14:10:19 2013



3/4" I.P. 8" DOWN TAGGED RCE 19789, ACCEPTED AS BEING THE CENTER QUARTER CORNER OF SECTION 15, 13/19, M.D.B. & M. CONFIRMED WITH TIES ON RECORD WITH THE FRESNO COUNTY SURVEYOR.

WEST GETTYSBURG AVENUE

WEST INDIANAPOLIS AVENUE

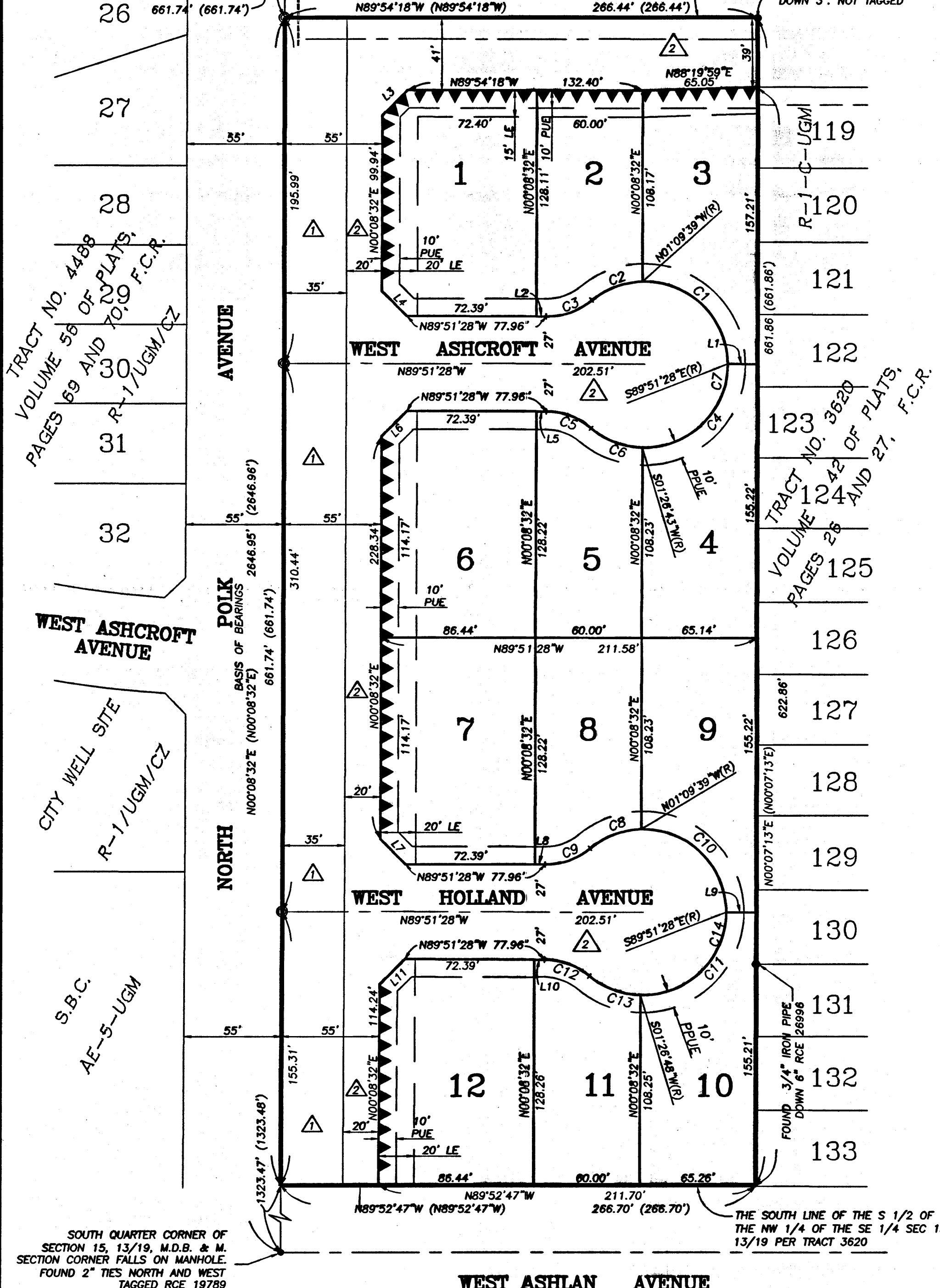
THE NORTH LINE OF THE S 1/2 OF THE NW 1/4 OF THE SE 1/4 SEC 15 13/19 PER TRACT 3620

FOUND 3/4" IRON PIPE DOWN 3". NOT TAGGED

FINAL MAP OF TRACT NO. 5259

FOR ARTEL FARMS, INC.
CONSISTING OF 2 SHEETS
SHEET 2 OF 2 SHEETS

IN THE CITY OF FRESNO, FRESNO COUNTY, CALIFORNIA
SURVEYED & PLATTED JUNE, 2004 BY RABE ENGINEERING INC.
CIVIL ENGINEERS-LAND SURVEYORS 2021 N. GATEWAY BLVD., FRESNO CALIFORNIA 93727
(559) 252-7223



CURVE DATA

CURVE	RADIUS	DELTA	LENGTH
C1	47.00'	91°18'11"	74.90'
C2	47.00'	38°19'58"	31.44'
C3	40.00'	39°38'09"	27.67'
C4	47.00'	91°18'11"	74.90'
C5	40.00'	39°38'09"	27.67'
C6	47.00'	38°19'58"	31.44'
C7	47.00'	259°16'18"	212.68'
C8	47.00'	38°19'58"	31.44'
C9	40.00'	39°38'09"	27.67'
C10	47.00'	91°18'11"	74.90'
C11	47.00'	91°18'16"	74.90'
C12	40.00'	39°38'09"	27.67'
C13	47.00'	38°19'53"	31.44'
C14	47.00'	259°16'18"	212.68'

LINE DATA

LINE	BEARING	LENGTH
L1	N89°51'28"W	17.01'
L2	N89°51'28"W	5.57'
L3	N45°08'29"E	19.87'
L4	N44°51'28"W	19.87'
L5	N89°51'28"W	5.57'
L6	N45°08'32"E	19.87'
L7	N44°51'28"W	19.87'
L8	N89°51'28"W	5.57'
L9	N89°51'28"W	17.13'
L10	N89°51'28"W	5.57'
L11	N45°08'32"E	19.87'

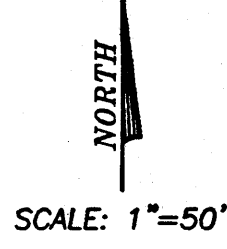
LEGEND

- PUE - PUBLIC UTILITY EASEMENT OFFERED FOR DEDICATION FOR PUBLIC USE
- PPUE - PLANTING & PUBLIC UTILITY EASEMENT OFFERED FOR DEDICATION FOR PUBLIC USE
- LE - LANDSCAPE EASEMENT OFFERED FOR DEDICATION FOR PUBLIC USE
- ▲▲▲ INDICATES RELINQUISHMENT OF DIRECT VEHICULAR ACCESS RIGHTS
- △ PREVIOUSLY DEEDED FOR PUBLIC STREET PURPOSES PER DOCUMENT NO. 92077652 RECORDED JUNE 4, 1992
- △ OFFERED FOR DEDICATION FOR PUBLIC STREET PURPOSES
- MONUMENT FOUND AND ACCEPTED AS NOTED
- () PER RECORDED DATA FROM TRACT NO. 3620, RECORDED IN VOLUME 42 OF PLATS AT PAGES 26 AND 27, FRESNO COUNTY RECORDS.
- CENTERLINE MONUMENTS, SET 2 1/2" BRASS CAP MONUMENT FLUSH IN 6" DIAMETER CONCRETE FOOTING
- BLUE BORDER INDICATES THE LIMITS OF THIS SUBDIVISION

BASIS OF BEARINGS

THE WEST LINE OF THE SOUTHEAST QUARTER OF SECTION 15, T. 13 S., R. 19 E., M.D.B. & M. IS TAKEN TO BE NORTH 00°08'32" EAST, AS SHOWN PER MAP OF TRACT NO. 3620 RECORDED IN VOLUME 42 OF PLATS PAGES 26 AND 27, FRESNO COUNTY RECORDS.

NOTE:
SET 1" O.D. IRON PIPE 30" LONG 6" DOWN TAGGED L.S. 2931 AT ALL LOT CORNERS AND AT THE BEGINNING AND END OF CURVES, OR WILL BE SET WITHIN ONE YEAR OR ANY APPROVED EXTENSION THEREOF FOR INTERIOR CORNERS.



SOUTH QUARTER CORNER OF SECTION 15, 13/19, M.D.B. & M. SECTION CORNER FALLS ON MANHOLE. FOUND 2" TIES NORTH AND WEST TAGGED RCE 19789

THE SOUTH LINE OF THE S 1/2 OF THE NW 1/4 OF THE SE 1/4 SEC 15 13/19 PER TRACT 3620