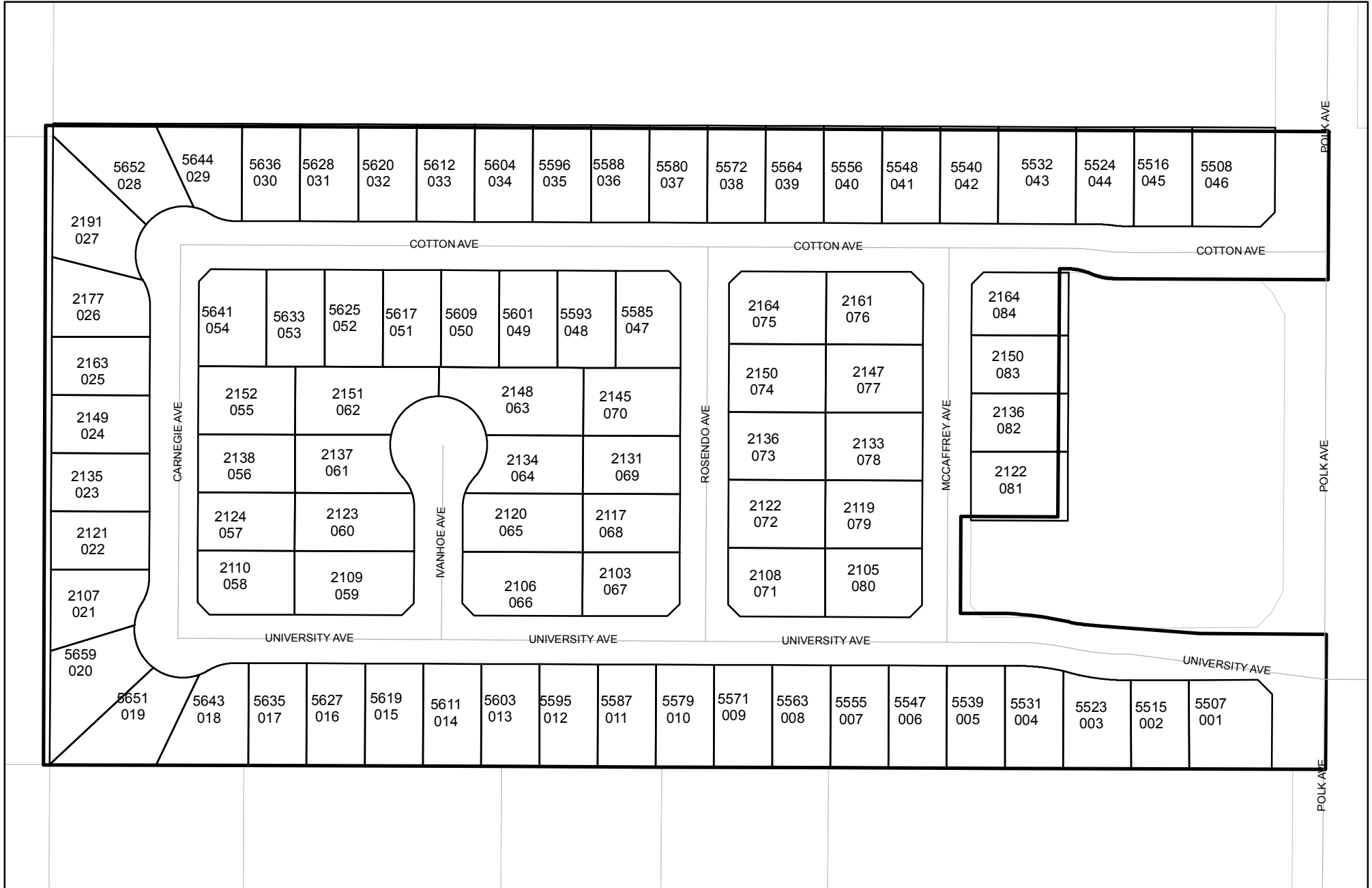




Prepared on Mon Oct 22 15:21:36 2018

# Street Names, Addresses and (Lot Numbers) for T5251



# FINAL MAP OF TRACT NO. 5251

IN THE CITY OF FRESNO, COUNTY OF FRESNO, STATE OF CALIFORNIA SURVEYED AND PLATTED IN MAY 2005 BY QUAD KNOPF INC. CONSISTING OF 2 SHEETS SHEET 2 OF 2

### BASIS OF BEARINGS

THE EAST LINE OF THE SOUTHWEST QUARTER OF SECTION 27, TOWNSHIP 13 SOUTH, RANGE 19 EAST, TAKEN TO BEAR SOUTH 00°36'03" WEST PER PARCEL MAP NO. 3582 FILED IN BOOK 23 OF PARCEL MAPS, AT PAGE 71, F.C.R.

### NOTES:

SET 3/4" BY 30" IRON PIPE, 6" BELOW SURFACE, TAGGED PLS 7985, AT ALL LOT CORNERS, BEGINNING AND ENDING OF CURVES, AND ANGLE POINTS OF RIGHT OF WAY, UNLESS NOTED OTHERWISE.

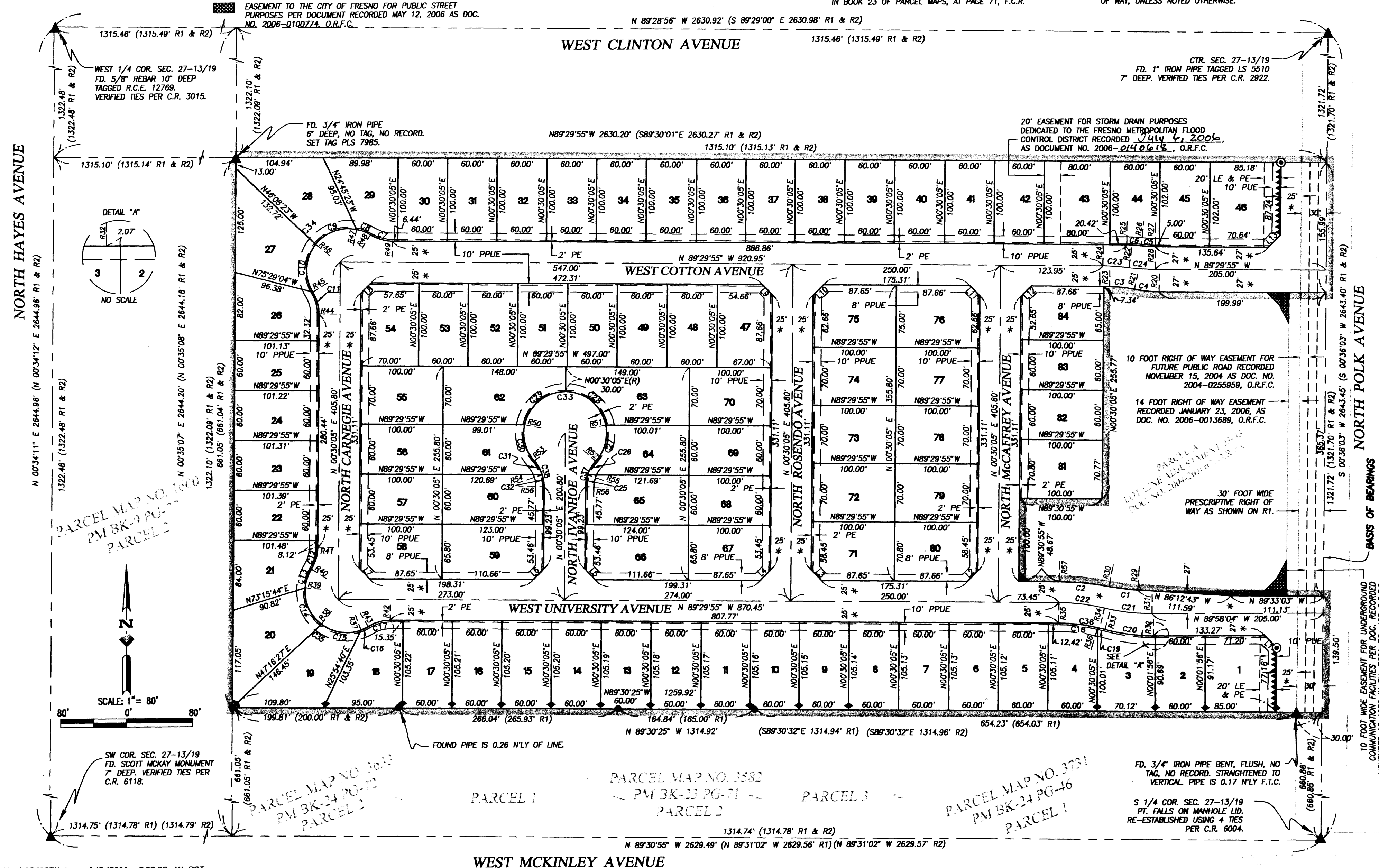
LINE	BEARING	LENGTH
L1	N 44°42'06" W	20.70'
L2	N 45°30'05" E	17.46'
L3	N 44°29'55" W	17.46'
L4	N 45°30'05" E	17.46'
L5	N 44°29'55" W	17.46'
L6	N 45°30'05" E	17.46'
L7	N 44°29'55" W	17.46'
L8	N 45°30'21" E	17.46'
L9	N 44°29'55" W	17.46'
L10	N 45°30'21" E	17.46'
L11	N 44°29'55" W	17.46'
L12	N 45°30'05" E	17.46'
L13	N 44°45'57" E	20.61'

### LEGEND

- ▲ MONUMENT FOUND AND ACCEPTED AS DESCRIBED
- FOUND 3/4" IRON PIPE TAGGED LS 2854 PER R1. MONUMENT DESTROYED DUE TO WALL CONSTRUCTION. RESET IN SAME LOCATION WITH BRASS TAG PLS 7985 IN WALL.
- ⊙ SET 3/4" IRON PIPE, 30" LONG, 4" UP IN P.C.C., 6" DIAMETER MONUMENT, AT 6" BELOW FINISH GRADE, TAGGED PLS 7985
- ◆ SET WITNESS CORNER 3/4" X 30" IRON PIPE, DOWN 6", TAGGED PLS 7985 ON LOT LINE AS SHOWN AT 3.00' OFFSET FROM NEAREST LOT CORNER. (DISTANCES SHOWN ARE TO TRUE CORNER)
- PPUE PLANTING AND PUBLIC UTILITY EASEMENT NOW OFFERED FOR DEDICATION FOR PUBLIC USE
- PUE PUBLIC UTILITY EASEMENT NOW OFFERED FOR DEDICATION FOR PUBLIC USE
- LE LANDSCAPE EASEMENT NOW OFFERED FOR DEDICATION FOR PUBLIC USE
- PE PEDESTRIAN EASEMENT NOW OFFERED FOR DEDICATION FOR PUBLIC USE
- (R) RADIAL DATA
- F.T.C. FROM TRUE CORNER
- O.R.F.C. OFFICIAL RECORDS FRESNO COUNTY CORNER RECORD ON FILE WITH FRESNO COUNTY SURVEYOR'S OFFICE
- C.R. FRESNO COUNTY RECORDS
- F.C.R. FRESNO COUNTY RECORDS
- BLUE BORDER INDICATES LIMITS OF SUBDIVISION
- RELINQUISHMENT OF DIRECT ACCESS RIGHTS
- \* INDICATES AREA NOW OFFERED FOR DEDICATION FOR PUBLIC STREET AND UTILITY PURPOSES
- R1 RECORD DATA PER PARCEL MAP NO. 3582 FILED IN BOOK 23 OF PARCEL MAPS, AT PAGE 71, F.C.R.
- R2 RECORD DATA PER PARCEL MAP NO. 3633 FILED IN BOOK 24 OF PARCEL MAPS, AT PAGE 72, F.C.R. OR CALCULATED THEREFROM.
- EASEMENT TO THE CITY OF FRESNO FOR PUBLIC STREET PURPOSES PER DOCUMENT RECORDED MAY 12, 2006 AS DOC. NO. 2006-0100724, O.R.F.C.

RADIAL	BEARING
R20	S 00°30'05" W
R21	N 11°58'47" E
R22	N 07°45'13" E
R23	N 00°30'05" E
R24	N 00°30'05" E
R25	N 00°30'05" E
R26	N 07°07'15" E
R27	S 00°30'05" W
R28	S 00°30'05" W
R29	S 03°47'17" W
R30	N 10°26'56" E
R31	S 00°01'56" W
R32	S 00°01'56" W
R33	N 15°02'58" E
R34	N 13°18'41" E
R35	N 00°30'05" E
R36	N 12°42'28" E
R37	S 19°49'40" E
R38	S 37°28'04" W
R39	N 85°14'11" W
R40	N 57°42'37" W
R41	N 89°29'55" W
R42	N 00°30'05" E
R43	S 31°17'13" E
R44	S 89°29'55" E
R45	N 58°42'47" E
R46	N 51°21'45" W
R47	N 11°39'47" E
R48	N 32°17'23" E
R49	N 00°30'05" E
R50	N 77°57'42" W
R51	N 78°57'51" E
R52	S 46°57'43" E
R53	S 47°57'52" W
R54	N 72°04'18" E
R55	N 71°04'09" W
R56	N 89°29'55" W
R57	S 00°29'05" W

CURVE	DELTA	RADIUS	LENGTH
C1	6°39'39"	300.00'	34.88'
C2	9°57'51"	350.00'	60.87'
C3	11°28'42"	150.00'	30.05'
C4	11°28'42"	150.00'	30.05'
C5	6°37'10"	150.00'	17.33'
C6	6°37'10"	150.00'	17.33'
C7	31°47'18"	50.00'	27.74'
C8	20°37'36"	50.00'	18.00'
C9	6°30'13"	50.00'	55.00'
C10	6°55'28"	50.00'	61.02'
C11	31°47'18"	50.00'	27.74'
C12	31°47'18"	50.00'	27.74'
C13	27°31'34"	50.00'	24.02'
C14	57°17'45"	50.00'	50.00'
C15	57°17'44"	50.00'	50.00'
C16	11°27'33"	50.00'	10.00'
C17	31°47'18"	50.00'	27.74'
C18	12°12'23"	225.00'	47.93'
C19	2°20'30"	225.00'	9.20'
C20	19°01'02"	225.00'	58.97'
C21	13°16'45"	250.00'	57.94'
C22	12°48'36"	250.00'	55.89'
C23	7°15'08"	250.00'	31.64'
C24	7°15'08"	250.00'	31.64'
C25	18°25'46"	45.00'	14.47'
C26	24°06'26"	45.00'	18.93'
C27	54°04'26"	50.00'	47.19'
C28	78°27'46"	50.00'	68.47'
C29	78°27'47"	50.00'	68.47'
C30	54°04'26"	50.00'	47.19'
C31	24°06'26"	45.00'	18.93'
C32	18°25'47"	45.00'	14.47'
C33	26°50'25"	50.00'	231.32'
C34	15°34'36"	50.00'	134.02'
C35	15°34'36"	50.00'	134.02'
C36	14°32'53"	225.00'	57.13'
C37	42°32'12"	45.00'	33.41'
C38	42°32'12"	45.00'	33.41'



PARCEL MAP NO. 3600  
PM BK-9 PG-22  
PARCEL 2

PARCEL MAP NO. 3633  
PM BK-24 PG-22  
PARCEL 2

PARCEL 1

PARCEL MAP NO. 3582  
PM BK-23 PG-71  
PARCEL 2

PARCEL 3

PARCEL MAP NO. 3731  
PM BK-24 PG-40  
PARCEL 1

10 FOOT WIDE EASEMENT FOR UNDERGROUND COMMUNICATION FACILITIES PER DOC. RECORDED NOVEMBER 12 1980 IN BK. 7621 PG. 406 O.R.F.C.