



Prepared on Tue Apr 02 14:11:11 2013

Street Names, Addresses and (Lot Numbers) for T5248



TRACT NO. 5248

PHASE II OF TENTATIVE TRACT NO. 5248

IN THE CITY OF FRESNO, COUNTY OF FRESNO, STATE OF CALIFORNIA
SURVEYED AND PLATTED IN OCTOBER 2004, BY GARY G. GIANNETTA

SHEET TWO OF TWO SHEETS

3/4" IRON PIPE, FLUSH WITH AC, AS BEING THE CENTER
QUARTER CORNER OF SECTION 16, T 14 S, R 21 E,
M.D.B. & M. C.R.# 05638

LINE DATA

LINE	DIRECTION	DISTANCE
L1	N 44°52'44" W	21.28'
L2	N 45°07'16" E	21.15'
L3	N 44°42'36" W	17.68'
L4	N 44°12'03" E	18.01'
L5	N 46°12'50" E	17.39'
L6	N 44°42'36" W	17.68'
L7	N 45°17'24" E	17.68'
L8	N 45°17'24" E	17.68'
L9	N 44°42'36" W	17.68'
L10	N 44°42'36" W	17.68'
L11	N 45°17'24" E	17.68'
L12	N 44°42'36" W	17.68'
L13	N 45°17'24" E	17.68'
L14	S 00°17'24" W	28.00'
L15	N 44°42'36" W	17.68'
L16	N 45°17'24" E	17.68'
L17	N 44°52'44" W	21.28'
L18	N 00°17'24" E	2.50'
L19	N 33°21'08" W	6.01'

NOTE:

- SET 3/4" IRON PIPE, 6" DOWN, TAGGED RCE 26996 AT ALL LOT CORNERS
- 3/4" IRON PIPE, 30" LONG, 6" DOWN TAGGED RCE 26996, AS BEING AN ANGLE POINT ON THE BOUNDARY OF PARCEL MAP NO. 2004-27, OR AS NOTED

BASIS OF BEARINGS

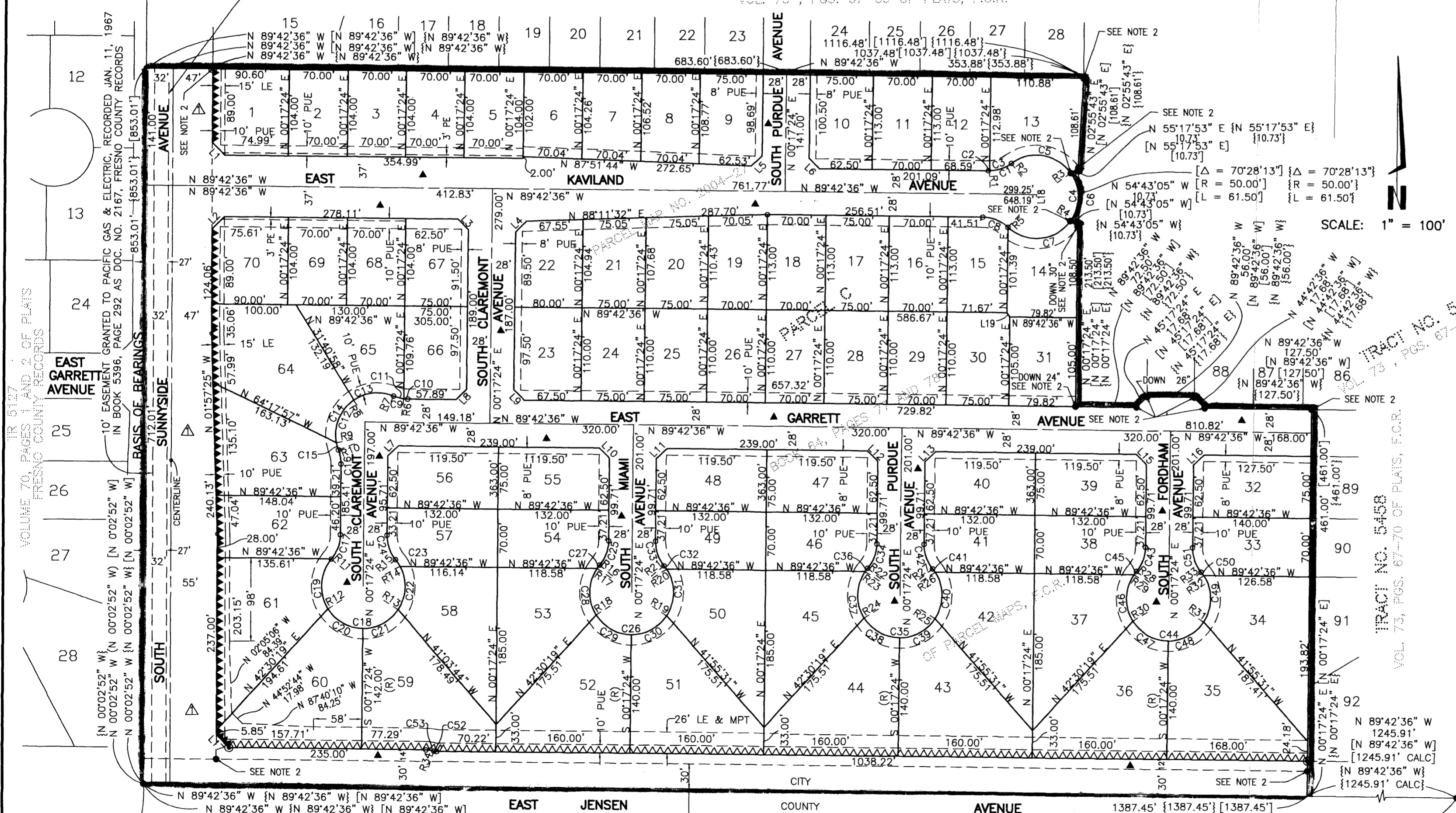
THE WEST LINE OF THE SOUTHEAST QUARTER OF SECTION 16, TOWNSHIP 14 SOUTH, RANGE 21 EAST, MOUNT Diablo BASE AND MERIDIAN, TAKEN AS BEARING N 0°02'52" W AS PER TRACT NO. 5127, RECORDED IN VOLUME 70, PAGES 1 AND 2 OF PLATS, FRESNO COUNTY RECORDS.

LEGEND:

- MONUMENT FOUND AND ACCEPTED AS NOTED
- SET 3/4" IRON PIPE, 30" LONG, 6" DOWN BELOW GROUND, TAGGED R.C.E. 26996
- ⊙ SET 3/4" IRON PIPE, 30" LONG, 4" UP IN 6" DIAMETER x 30" P.C.C. MONUMENT, DOWN 6" BELOW GROUND, TAGGED R.C.E. 26996
- ▲ NOW OFFERED FOR DEDICATION FOR PUBLIC STREET PURPOSES
- ▲▲▲▲ INDICATES RELINQUISHMENT OF DIRECT ACCESS RIGHTS
- () RECORD DATA AS PER TRACT NO. 5127, RECORDED IN VOLUME 70, PAGES 1 AND 2 OF PLATS, F.C.R.
- [] RECORD DATA AS PER PARCEL MAP 2004-27 RECORDED IN BOOK 64, PAGES 77 AND 78 OF PARCEL MAPS, F.C.R.
- { } RECORD DATA AS PER TRACT NO. 5458, RECORDED IN VOLUME 73, PAGES 67 THROUGH 70 OF PLATS, F.C.R.
- △ PREVIOUSLY DEEDED FOR PUBLIC STREET PURPOSES JANUARY 26, 1998 AS DOC. NO. 98009904, F.C.R.
- ▲▲▲▲ PREVIOUS RELINQUISHMENT OF ACCESS RIGHTS AS PER PARCEL MAP NO. 2004-27 RECORDED IN BOOK 64, PAGES 77 AND 78 OF PARCEL MAPS, FRESNO COUNTY RECORDS
- MPT MULTI-PURPOSE PEDESTRIAN/BIKE TRAIL EASEMENT NOW OFFERED FOR DEDICATION FOR PUBLIC USE
- PUE PUBLIC UTILITY EASEMENT NOW OFFERED FOR DEDICATION FOR PUBLIC USE
- LE LANDSCAPE EASEMENT NOW OFFERED FOR DEDICATION FOR PUBLIC USE
- F.C.R. FRESNO COUNTY RECORDS
- BLUE BORDER INDICATES THE LIMITS OF THIS SUBDIVISION
- CITY CITY OF FRESNO BOUNDARY
- COUNTY COUNTY OF FRESNO BOUNDARY

TRACT NO. 5458

VOL. 73, PGS. 67-69 OF PLATS, F.C.R.



CURVE DATA

CURVE	RADIUS	LENGTH	TANGENT	DELTA
C1	45.00'	29.35'	15.22'	37°22'10"
C2	45.00'	1.41'	0.71'	1°47'55"
C3	45.00'	27.94'	14.44'	35°34'15"
C4	50.00'	226.42'	60.16'	259°27'30"
C5	50.00'	80.40'	51.90'	92°08'04"
C6	50.00'	61.50'	35.32'	70°28'13"
C7	50.00'	84.52'	56.37'	96°51'15"
C8	45.00'	33.06'	17.31'	42°05'20"
C9	45.00'	17.38'	8.80'	22°07'57"
C10	45.00'	4.62'	2.31'	05°52'38"
C11	45.00'	12.77'	6.43'	16°15'18"
C12	50.00'	117.17'	118.55'	134°15'53"
C13	50.00'	50.03'	27.33'	57°19'33"
C14	50.00'	57.90'	32.69'	66°20'49"
C15	50.00'	9.24'	4.63'	10°35'31"
C16	45.00'	17.38'	8.80'	22°07'57"
C17	45.00'	31.25'	16.28'	39°47'16"
C18	50.00'	226.52'	60.04'	259°34'31"
C19	50.00'	63.26'	36.66'	72°29'31"
C20	50.00'	50.00'	27.32'	57°17'45"
C21	50.00'	50.00'	27.32'	57°17'45"
C22	50.00'	53.57'	29.68'	61°23'22"
C23	50.00'	9.69'	4.86'	11°06'08"
C24	45.00'	31.25'	16.28'	39°47'16"
C25	45.00'	31.25'	16.28'	39°47'16"
C26	50.00'	226.52'	60.04'	259°34'32"
C27	50.00'	5.00'	2.50'	05°43'55"
C28	50.00'	58.26'	32.94'	66°45'36"
C29	50.00'	50.00'	27.32'	57°17'45"
C30	50.00'	50.00'	27.32'	57°17'45"
C31	50.00'	58.26'	32.94'	66°45'36"
C32	50.00'	5.00'	2.50'	05°43'55"
C33	45.00'	31.25'	16.28'	39°47'16"
C34	45.00'	31.25'	16.28'	39°47'16"
C35	50.00'	226.52'	60.04'	259°34'32"
C36	50.00'	5.00'	2.50'	05°43'55"
C37	50.00'	58.26'	32.94'	66°45'36"
C38	50.00'	50.00'	27.32'	57°17'45"
C39	50.00'	50.00'	27.32'	57°17'45"
C40	50.00'	58.26'	32.94'	66°45'36"
C41	50.00'	5.00'	2.50'	05°43'55"
C42	45.00'	31.25'	16.28'	39°47'16"
C43	45.00'	31.25'	16.28'	39°47'16"
C44	50.00'	226.52'	60.04'	259°34'32"
C45	50.00'	5.00'	2.50'	05°43'55"
C46	50.00'	58.26'	32.94'	66°45'36"
C47	50.00'	50.00'	27.32'	57°17'45"
C48	50.00'	50.00'	27.32'	57°17'45"
C49	50.00'	58.26'	32.94'	66°45'36"
C50	50.00'	5.00'	2.50'	05°43'55"
C51	45.00'	31.25'	16.28'	39°47'16"
C52	10.00'	1.60'	3.18'	18°11'42"
C53	30.00'	4.80'	9.53'	18°11'42"

RADIAL DATA

LINE	DIRECTION
R1	S 01°30'31" W
R2	N 37°04'46" E
R3	N 55°03'18" E
R4	S 54°28'29" E
R5	N 42°22'44" E
R6	S 06°10'02" W
R7	N 22°25'21" E
R8	N 34°54'12" W
R9	S 78°44'59" W
R10	N 68°09'28" E
R11	N 49°55'20" W
R12	S 57°35'09" W
R13	N 57°00'21" W
R14	N 61°36'17" E
R15	N 50°30'08" E
R16	N 49°55'20" W
R17	N 55°39'15" W
R18	S 57°35'09" W
R19	S 57°00'21" E
R20	N 56°14'03" E
R21	N 50°30'08" E
R22	N 49°55'20" W
R23	N 55°39'15" W
R24	S 57°35'09" W
R25	S 57°00'21" E
R26	N 56°14'03" E
R27	N 50°30'08" E
R28	N 49°55'20" W
R29	N 55°39'15" W
R30	S 57°35'09" W
R31	S 57°00'21" E
R32	N 56°14'03" E
R33	N 50°30'08" E
R34	N 18°29'06" E

FRESNO COUNTY BRASS CAP MONUMENT, FLUSH WITH AC, AS BEING THE SOUTH QUARTER CORNER OF SECTION 16, T 14 S, R 21 E, M.D.B. & M. C.R.# 2893

PREVIOUSLY DEDICATED TO THE COUNTY OF FRESNO FOR ROAD PURPOSES AND RECORDED IN BOOK 171, PAGE 24 OF DEEDS, FRESNO COUNTY RECORDS

FRESNO COUNTY BRASS CAP MONUMENT, 10" DOWN, AS BEING THE SOUTHEAST CORNER OF SECTION 16, T 14 S, R 21 E, M.D.B. & M. C.R.# 06160

VOLUME 70, PAGES 1 AND 2 OF PLATS
FRESNO COUNTY RECORDS

TRACT NO. 5458
VOL. 73, PGS. 67-70 OF PLATS, F.C.R.

TRACT NO. 5459
VOL. 73, PGS. 67-70 OF PLATS, F.C.R.