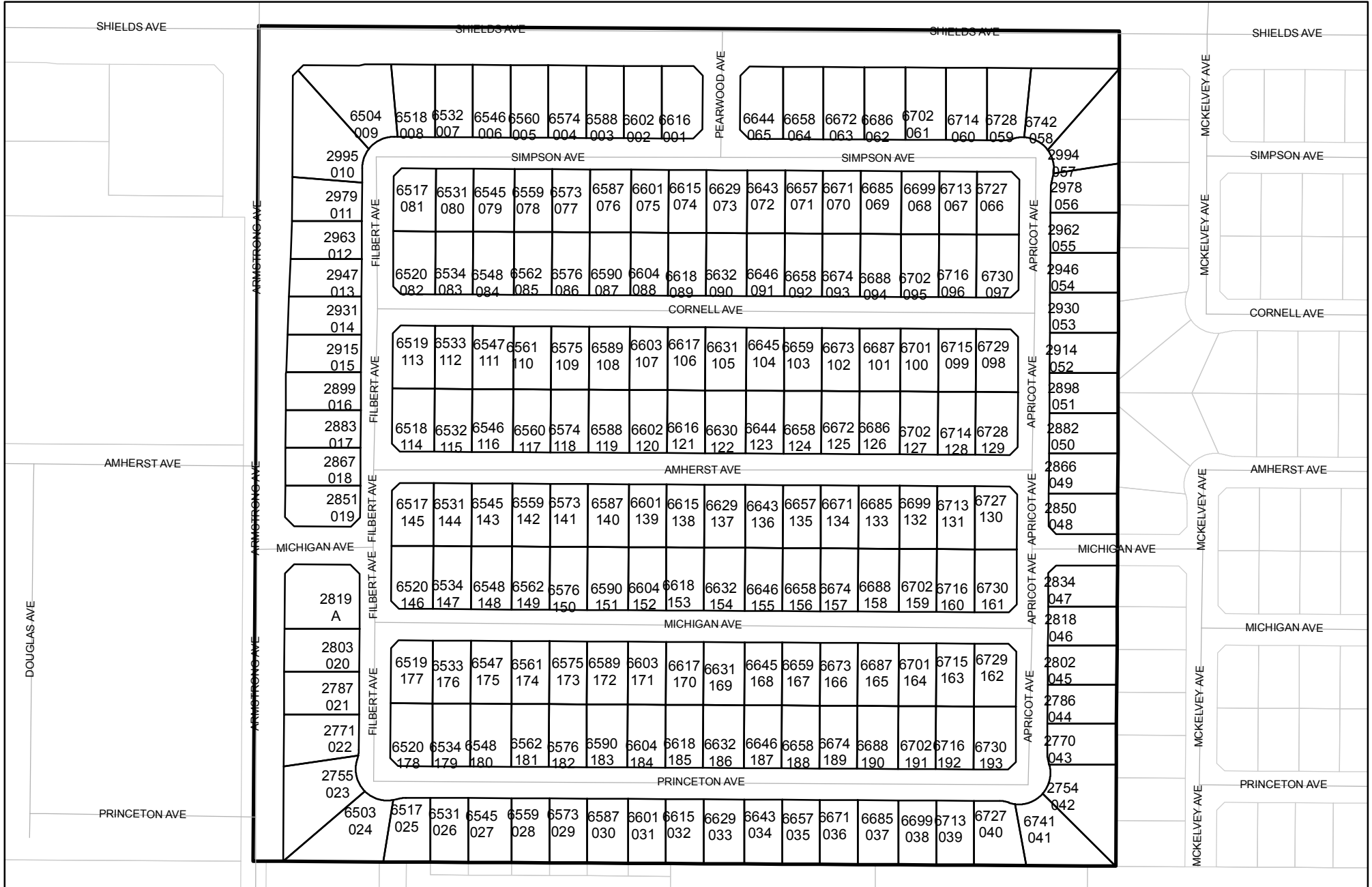




Street Names, Addresses and (Lot Numbers) for T5233

Prepared on Tue Dec 26 20:50:53 2017



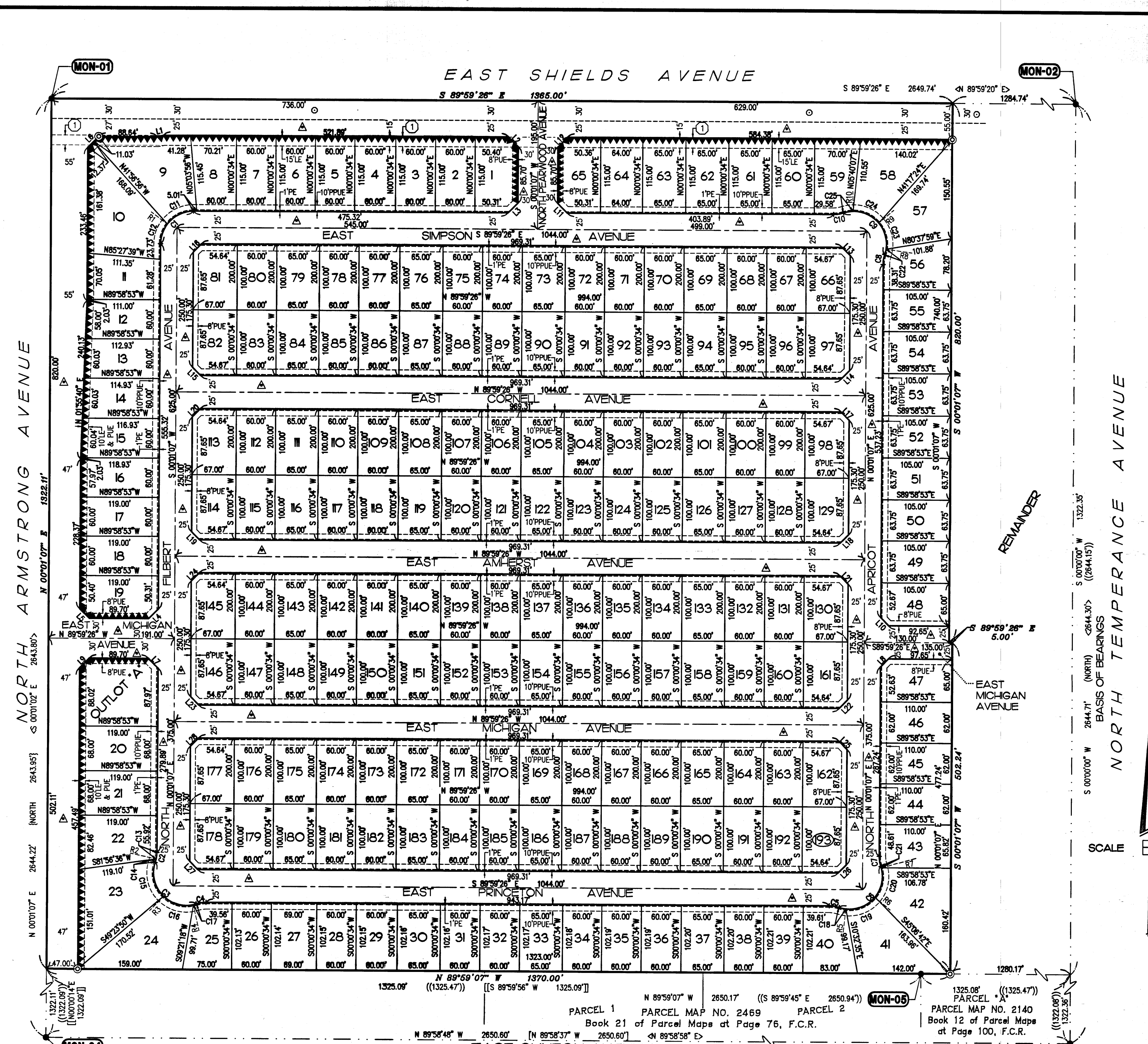
MAP OF TRACT NO. 5233

PHASE I OF TENTATIVE TRACT NO. 5233

IN THE CITY OF FRESNO
FRESNO COUNTY, CALIFORNIA
SURVEYED AND PLATTED IN JANUARY, 2004
BY INGELS - BRAUN & ASSOCIATES

CONSISTING OF THREE SHEETS
SHEET 3 OF 3 SHEETS

SEE SHEET TWO FOR BASIS OF
BEARINGS, LEGEND AND FOUND
MONUMENT DESCRIPTIONS



LINE TABLE

LINE	BEARING	LENGTH
L1	N77°52'21"E	9.51'
L2	S44°59'41"E	20.67'
L3	S45°01'29"W	20.77'
L4	S45°00'12"W	20.77'
L5	N44°58'29"W	20.67'
L6	N45°00'54"E	23.40'
L7	S44°58'52"E	20.77'
L8	N45°00'43"E	17.47'
L9	N44°59'44"E	20.68'
L10	N44°59'12"W	17.46'
L11	N44°59'27"W	20.77'
L12	N45°01'35"E	20.67'
L13	S44°58'36"E	17.46'
L14	S45°00'00"W	17.46'
L15	N44°58'36"W	17.46'
L16	N45°00'00"E	17.46'
L17	S44°58'36"E	17.46'
L18	S45°00'00"W	17.46'
L19	N44°58'36"W	17.46'
L20	N45°00'00"E	17.46'
L21	S44°58'36"E	17.46'
L22	S45°00'00"W	17.46'
L23	N44°58'36"W	17.46'
L24	N45°00'00"E	17.46'
L25	S44°58'36"E	17.46'
L26	S45°00'00"W	17.46'
L27	N44°58'36"W	17.46'
L28	N45°00'00"E	17.46'

RADIAL TABLE

RADIAL	BEARING
R1	N52°49'40"W
R2	S77°23'20"E
R3	S43°45'45"W
R4	S12°53'53"E
R5	S05°57'41"W
R6	S05°52'34"E
R7	N74°42'11"E
R8	S81°46'18"E
R9	N49°32'59"E
R10	N01°00'54"W

CURVE TABLE

CURVE	RADIUS	LENGTH	CHORD	DELTA
C1	50.00'	78.53'	70.71'	89°59'27"
C2	45.00'	14.66'	14.60'	18°40'18"
C3	50.00'	111.14'	89.63'	127°21'09"
C4	45.00'	14.66'	14.60'	18°40'18"
C5	45.00'	14.66'	14.60'	18°40'18"
C6	50.00'	111.12'	89.62'	127°20'03"
C7	45.00'	14.66'	14.60'	18°40'18"
C8	45.00'	14.66'	14.60'	18°40'18"
C9	50.00'	111.14'	89.63'	127°21'09"
C10	45.00'	14.66'	14.60'	18°40'18"
C11	50.00'	46.11'	44.49'	52°50'14"
C12	50.00'	32.42'	31.86'	37°09'13"
C13	45.00'	9.89'	9.87'	12°35'33"
C14	45.00'	4.77'	4.77'	6°04'45"
C15	50.00'	56.66'	53.68'	64°55'40"
C16	50.00'	49.45'	47.46'	56°39'38"
C17	50.00'	5.03'	5.03'	5°45'51"
C18	50.00'	11.10'	11.08'	12°43'11"
C19	50.00'	49.60'	47.59'	56°50'15"
C20	50.00'	47.49'	45.73'	54°25'15"
C21	50.00'	2.93'	2.93'	3°21'22"
C22	50.00'	9.13'	9.12'	10°27'43"
C23	50.00'	42.48'	41.21'	48°40'43"
C24	50.00'	44.13'	42.71'	50°33'53"
C25	50.00'	15.40'	15.34'	17°38'50"

REVISIONS
06/23/04 • RE

BY: ESPINOZA -03/29/04
PL: A. CAPELLA

SCALE 1" = 100'

BASIS OF BEARINGS
S 00°00'00" W 2644.71' (NORTH)
S 00°00'00" W 2644.30' ((2644.15)')

REMAINDER

EAST MICHIGAN AVENUE

MON-02

MON-05

PARCEL 1 PARCEL MAP NO. 2469 PARCEL 2
Book 21 of Parcel Maps at Page 76, F.C.R.

PARCEL A
PARCEL MAP NO. 2140
Book 12 of Parcel Maps
at Page 100, F.C.R.

MON-01

MON-04