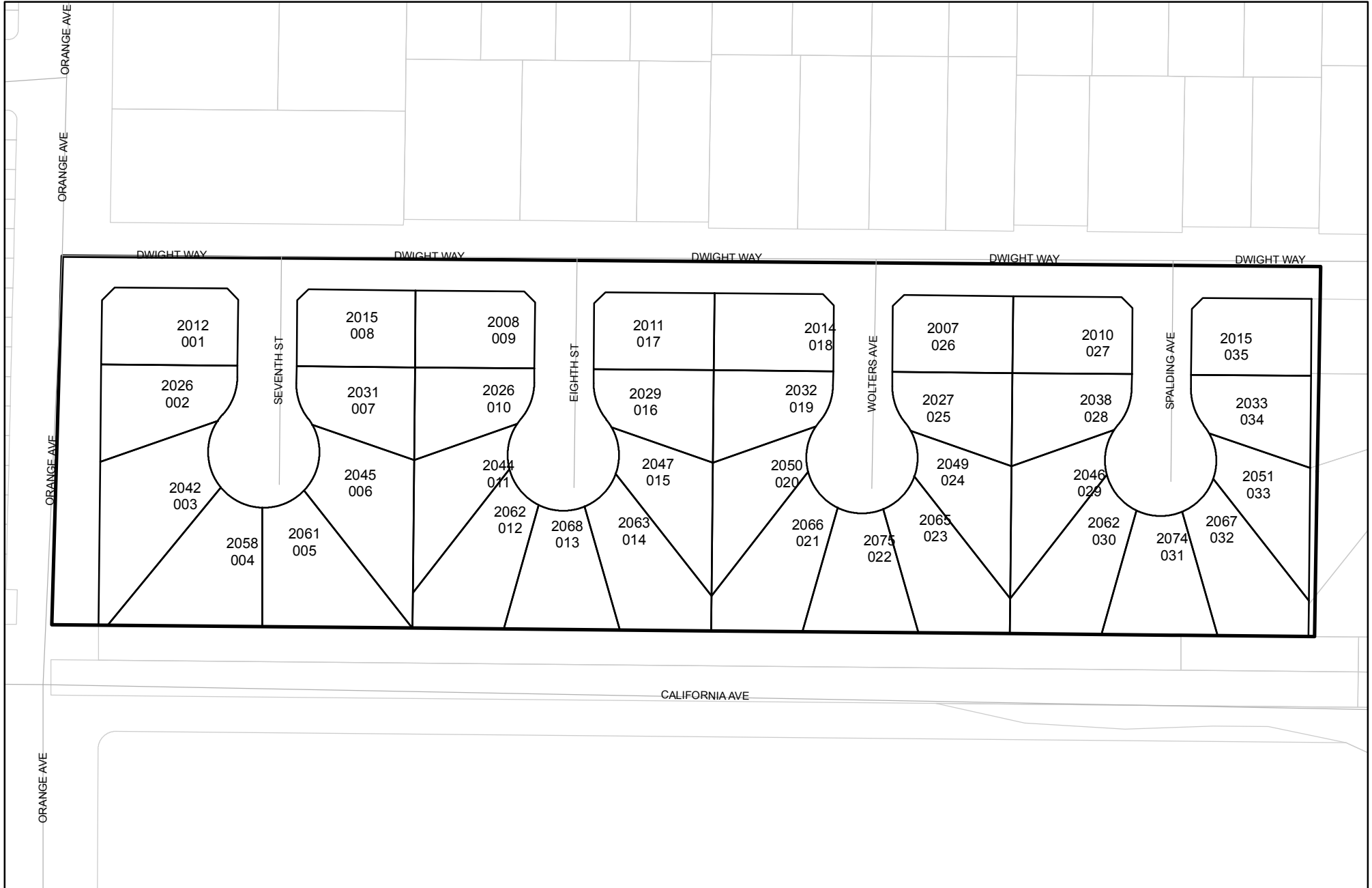




Prepared on Mon Sep 11 22:54:00 2017

Street Names, Addresses and (Lot Numbers) for T5215



FINAL MAP OF TRACT NO. 5215

IN THE CITY OF FRESNO
 FRESNO COUNTY, CALIFORNIA
 SURVEYED AND PLATTED BY
 HARBOUR & ASSOCIATES IN OCTOBER, 2004
 CONSISTING OF 2 SHEETS
 SHEET 2 OF 2

- LEGEND:**
- FOUND AND ACCEPTED MONUMENT AS DESCRIBED HEREON
 - ⊙ SET 3/4" X 30" IRON PIPE, UP 4" IN 6" PCC MONUMENT, DOWN 6", TAGGED LS 5277.
 - ⊙ FOUND AND ACCEPTED MONUMENT AS DESCRIBED HEREON. REPLACED WITH 3/4" X 30" IRON PIPE, UP 4" IN 6" PCC MONUMENT, DOWN 6", TAGGED LS 5277.
 - () INDICATES RECORD DATA AS SHOWN ON PARCEL MAP NO. 5009 RECORDED IN BOOK 34 OF PARCEL MAPS AT PAGE 21, FRESNO COUNTY RECORDS.
 - < > INDICATES RECORD DATA AS SHOWN ON RECORD OF SURVEY RECORDED IN BOOK 23 OF RECORD OF SURVEYS AT PAGE 89, FRESNO COUNTY RECORDS.
 - { } INDICATES RECORD DATA AS SHOWN ON RECORD OF SURVEY RECORDED IN BOOK 12 OF RECORD OF SURVEYS AT PAGE 88, FRESNO COUNTY RECORDS.
 - [] INDICATES RECORD DATA AS SHOWN ON RECORD OF SURVEY RECORDED IN BOOK 19 OF RECORD OF SURVEYS AT PAGE 88, FRESNO COUNTY RECORDS.
 - << >> INDICATES RECORD DATA AS SHOWN ON PARCEL MAP NO. 95-06 RECORDED IN BOOK 57 OF PARCEL MAPS AT PAGE 86, FRESNO COUNTY RECORDS.
 - (()) INDICATES RECORD DATA AS SHOWN ON DWIGHT PARK RECORDED IN BOOK 8 OF RECORD OF SURVEYS AT PAGE 14, FRESNO COUNTY RECORDS.

- LEGEND CONTINUED:**
- O.R.F.C. OFFICIAL RECORDS OF FRESNO COUNTY.
 - F.C.R. FRESNO COUNTY RECORDS.
 - PUE INDICATES PUBLIC UTILITY EASEMENT NOW OFFERED FOR DEDICATION FOR PUBLIC USE.
 - PLUE INDICATES PLANTING AND PUBLIC UTILITY EASEMENT NOW OFFERED FOR DEDICATION FOR PUBLIC USE.
 - LE INDICATES LANDSCAPE EASEMENT NOW OFFERED FOR DEDICATION FOR PUBLIC USE.
 - PE INDICATES PEDESTRIAN EASEMENT NOW OFFERED FOR DEDICATION FOR PUBLIC USE.
 - N.T.S. NOT TO SCALE
 - ▲ INDICATES PREVIOUSLY DEDICATED FOR PUBLIC STREET PURPOSES PER THE MAP OF DWIGHT PARK RECORDED IN BOOK 8 OF RECORD OF SURVEYS AT PAGE 14, FRESNO COUNTY RECORDS.
 - ▲ INDICATES NOW OFFERED FOR DEDICATION FOR PUBLIC STREET PURPOSES.
 - INDICATES RELINQUISHMENT OF DIRECT ACCESS RIGHTS.
 - THE SHADED BLUE BORDER INDICATES THE LIMITS OF THIS SUBDIVISION.

EAST QUARTER CORNER SECTION 11, 14/20, M.D.B. & M., FALLS ON MANHOLE. FOUND SHINERS 3" SOUTH AND EAST. ESTABLISHED PER TIES ON FILE CR 7002.

NOTE:
 SET 3/4" X 30" IRON PIPE, DOWN 0.5', TAGGED LS 5277, OR WILL BE SET WITHIN ONE YEAR OR ANY APPROVED EXTENSION THEREOF, FOR ALL LOT CORNERS, BLOCK CORNERS, AND THE BEGINNING AND ENDING OF ALL CURVES.

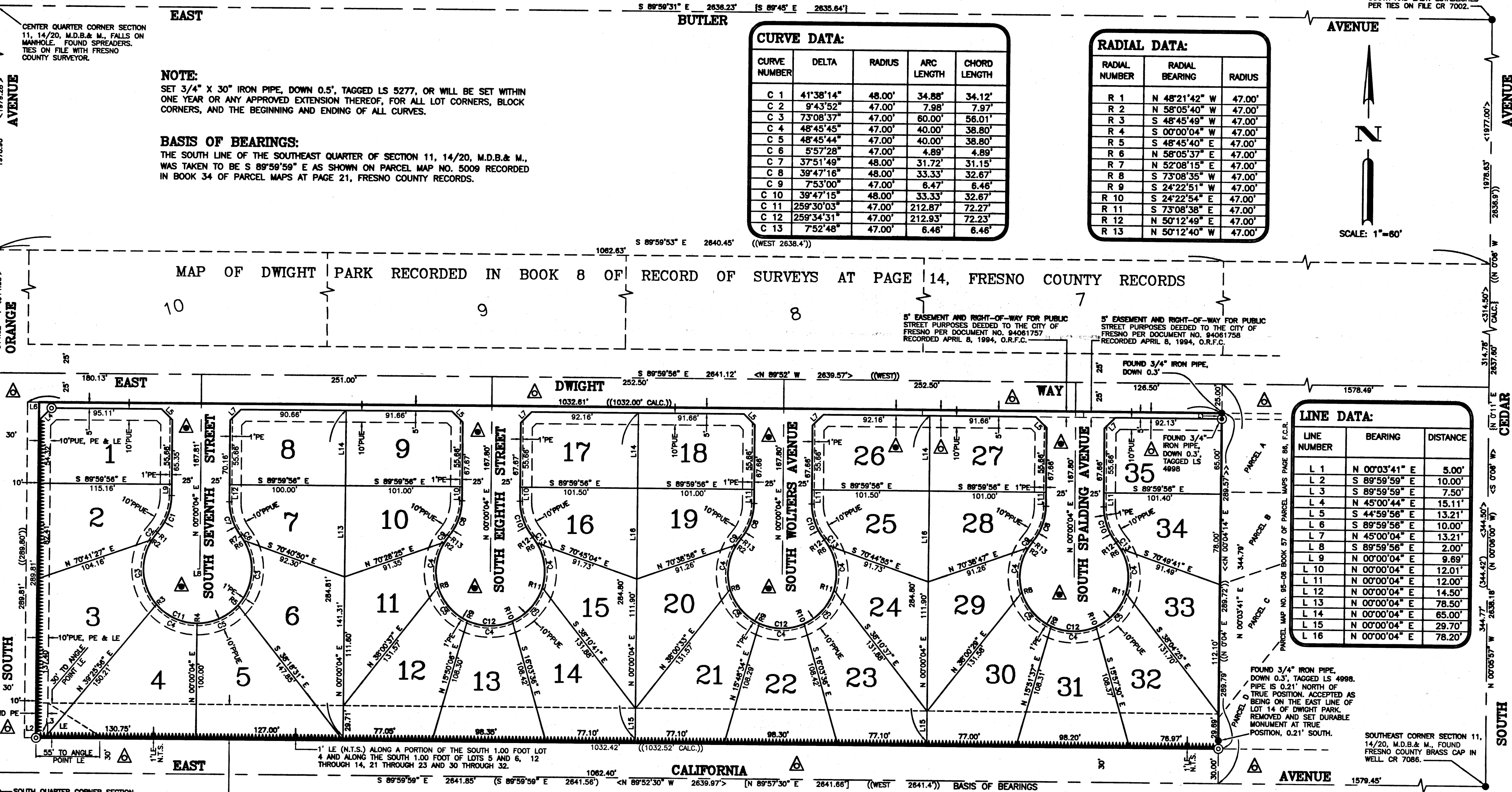
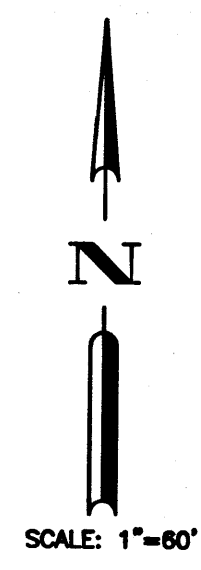
BASIS OF BEARINGS:
 THE SOUTH LINE OF THE SOUTHEAST QUARTER OF SECTION 11, 14/20, M.D.B. & M., WAS TAKEN TO BE S 89°59'59" E AS SHOWN ON PARCEL MAP NO. 5009 RECORDED IN BOOK 34 OF PARCEL MAPS AT PAGE 21, FRESNO COUNTY RECORDS.

CURVE DATA:

CURVE NUMBER	DELTA	RADIUS	ARC LENGTH	CHORD LENGTH
C 1	41°38'14"	48.00'	34.88'	34.12'
C 2	9°43'52"	47.00'	7.98'	7.97'
C 3	73°08'37"	47.00'	60.00'	56.01'
C 4	48°45'45"	47.00'	40.00'	38.80'
C 5	48°45'44"	47.00'	40.00'	38.80'
C 6	5°57'28"	47.00'	4.89'	4.89'
C 7	37°51'49"	48.00'	31.72'	31.15'
C 8	39°47'16"	48.00'	33.33'	32.67'
C 9	7°53'00"	47.00'	6.47'	6.46'
C 10	39°47'15"	48.00'	33.33'	32.67'
C 11	259°30'03"	47.00'	212.87'	72.27'
C 12	259°34'31"	47.00'	212.93'	72.23'
C 13	7°52'48"	47.00'	6.46'	6.46'

RADIAL DATA:

RADIAL NUMBER	RADIAL BEARING	RADIUS
R 1	N 48°21'42" W	47.00'
R 2	N 58°05'40" W	47.00'
R 3	S 48°45'49" W	47.00'
R 4	S 00°00'04" W	47.00'
R 5	S 48°45'40" E	47.00'
R 6	N 58°05'37" E	47.00'
R 7	N 52°08'15" E	47.00'
R 8	S 73°08'35" W	47.00'
R 9	S 24°22'51" W	47.00'
R 10	S 24°22'54" E	47.00'
R 11	S 73°08'38" E	47.00'
R 12	N 50°12'49" E	47.00'
R 13	N 50°12'40" W	47.00'



LINE DATA:

LINE NUMBER	BEARING	DISTANCE
L 1	N 00°03'41" E	5.00'
L 2	S 89°59'59" E	10.00'
L 3	S 89°59'59" E	7.50'
L 4	N 45°00'44" E	15.11'
L 5	S 44°59'56" E	13.21'
L 6	S 89°59'58" E	10.00'
L 7	N 45°00'04" E	13.21'
L 8	S 89°59'56" E	2.00'
L 9	N 00°00'04" E	9.69'
L 10	N 00°00'04" E	12.01'
L 11	N 00°00'04" E	12.00'
L 12	N 00°00'04" E	14.50'
L 13	N 00°00'04" E	78.50'
L 14	N 00°00'04" E	65.00'
L 15	N 00°00'04" E	29.70'
L 16	N 00°00'04" E	78.20'

REVISED 5-06-05
 REVISED 2-08-05

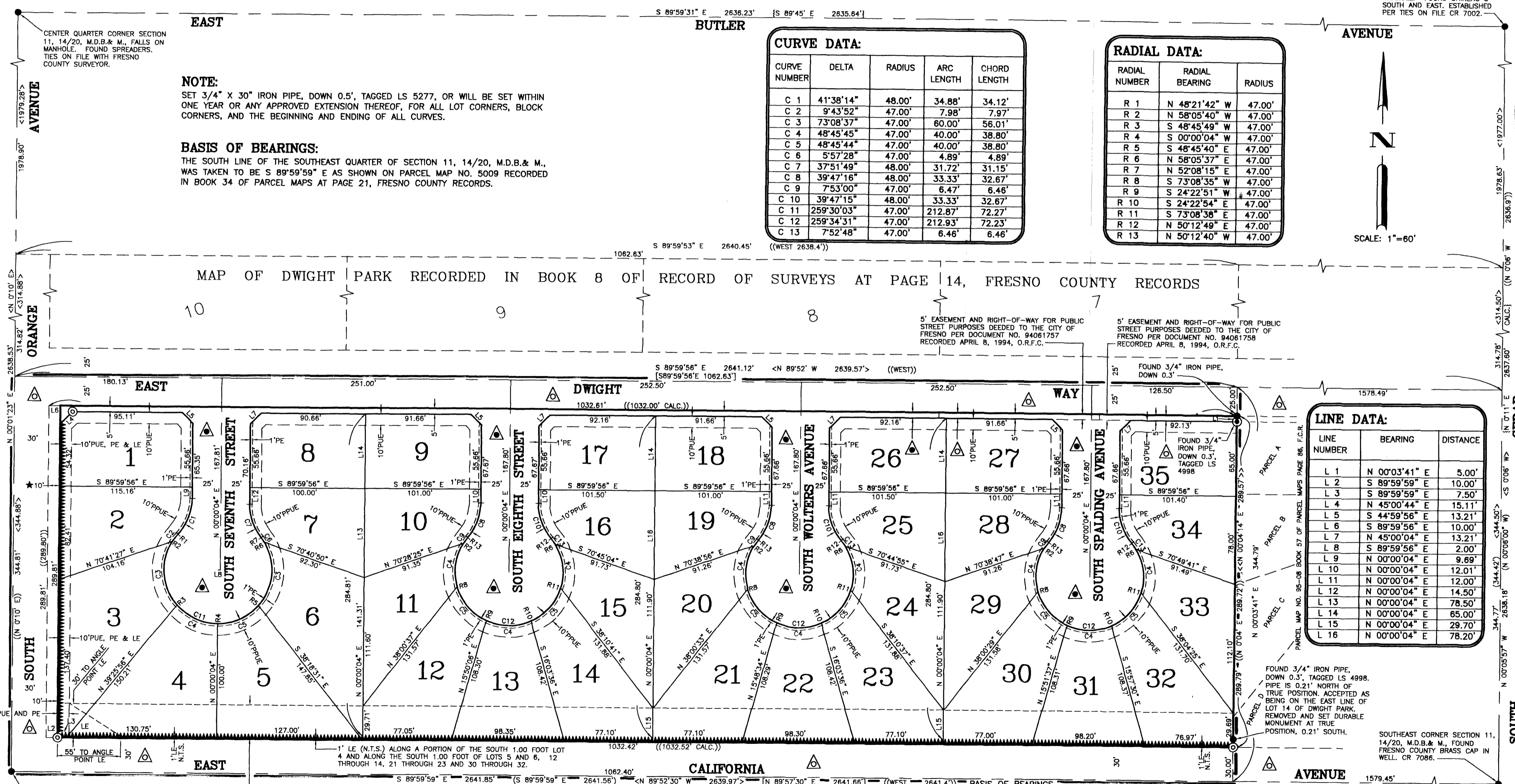
FINAL MAP OF TRACT NO. 5215

IN THE CITY OF FRESNO
FRESNO COUNTY, CALIFORNIA
SURVEYED AND PLATTED BY
HARBOUR & ASSOCIATES IN OCTOBER, 2004
CONSISTING OF 2 SHEETS
SHEET 2 OF 2

- LEGEND:**
- FOUND AND ACCEPTED MONUMENT AS DESCRIBED HEREON
 - ⊙ SET 3/4" X 30" IRON PIPE, UP 4" IN 6" PCC MONUMENT, DOWN 6", TAGGED LS 5277.
 - ⊖ FOUND AND ACCEPTED MONUMENT AS DESCRIBED HEREON. REPLACED WITH 3/4" X 30" IRON PIPE, UP 4" IN 6" PCC MONUMENT, DOWN 6", TAGGED LS 5277.
 - () INDICATES RECORD DATA AS SHOWN ON PARCEL MAP NO. 5009 RECORDED IN BOOK 34 OF PARCEL MAPS AT PAGE 21, FRESNO COUNTY RECORDS.
 - < > INDICATES RECORD DATA AS SHOWN ON RECORD OF SURVEY RECORDED IN BOOK 23 OF RECORD OF SURVEYS AT PAGE 69, FRESNO COUNTY RECORDS.
 - { } INDICATES RECORD DATA AS SHOWN ON RECORD OF SURVEY RECORDED IN BOOK 12 OF RECORD OF SURVEYS AT PAGE 88, FRESNO COUNTY RECORDS.
 - [] INDICATES RECORD DATA AS SHOWN ON RECORD OF SURVEY RECORDED IN BOOK 19 OF RECORD OF SURVEYS AT PAGE 80, FRESNO COUNTY RECORDS.
 - << >> INDICATES RECORD DATA AS SHOWN ON PARCEL MAP NO. 95-08 RECORDED IN BOOK 57 OF PARCEL MAPS AT PAGE 86, FRESNO COUNTY RECORDS.
 - (()) INDICATES RECORD DATA AS SHOWN ON DWIGHT PARK RECORDED IN BOOK 8 OF RECORD OF SURVEYS AT PAGE 14, FRESNO COUNTY RECORDS.
 - ★10' INDICATES 'NOT A PART OF SUBDIVISION' PER EXISTING FEE TITLE RIGHT OF WAY GRANT DEED RECORDED OCTOBER 13, 1972 AS DOCUMENT NO. 97225, BOOK 6086 PAGE 580, O.R.F.C.

- LEGEND CONTINUED:**
- O.R.F.C. OFFICIAL RECORDS OF FRESNO COUNTY.
 - F.C.R. FRESNO COUNTY RECORDS.
 - PUE INDICATES PUBLIC UTILITY EASEMENT NOW OFFERED FOR DEDICATION FOR PUBLIC USE.
 - PPUE INDICATES PLANTING AND PUBLIC UTILITY EASEMENT NOW OFFERED FOR DEDICATION FOR PUBLIC USE.
 - LE INDICATES LANDSCAPE EASEMENT NOW OFFERED FOR DEDICATION FOR PUBLIC USE.
 - PE INDICATES PEDESTRIAN EASEMENT NOW OFFERED FOR DEDICATION FOR PUBLIC USE.
 - N.T.S. NOT TO SCALE
 - ▲ INDICATES PREVIOUSLY DEDICATED FOR PUBLIC STREET PURPOSES PER THE MAP OF DWIGHT PARK RECORDED IN BOOK 8 OF RECORD OF SURVEYS AT PAGE 14, FRESNO COUNTY RECORDS.
 - ▲ INDICATES NOW OFFERED FOR DEDICATION FOR PUBLIC STREET PURPOSES.
 - ▲ INDICATES RELINQUISHMENT OF DIRECT ACCESS RIGHTS.
 - THE SHADED BLUE BORDER INDICATES THE LIMITS OF THIS SUBDIVISION.

EAST QUARTER CORNER SECTION 11, 14/20, M.D.B. & M., FALLS ON MANHOLE. FOUND SHINERS 3' SOUTH AND EAST. ESTABLISHED PER TIES ON FILE CR 7002.



NOTE:
SET 3/4" X 30" IRON PIPE, DOWN 0.5', TAGGED LS 5277, OR WILL BE SET WITHIN ONE YEAR OR ANY APPROVED EXTENSION THEREOF, FOR ALL LOT CORNERS, BLOCK CORNERS, AND THE BEGINNING AND ENDING OF ALL CURVES.

BASIS OF BEARINGS:
THE SOUTH LINE OF THE SOUTHEAST QUARTER OF SECTION 11, 14/20, M.D.B. & M., WAS TAKEN TO BE S 89°59'59" E AS SHOWN ON PARCEL MAP NO. 5009 RECORDED IN BOOK 34 OF PARCEL MAPS AT PAGE 21, FRESNO COUNTY RECORDS.

CURVE DATA:

CURVE NUMBER	DELTA	RADIUS	ARC LENGTH	CHORD LENGTH
C 1	41°38'14"	48.00'	34.88'	34.12'
C 2	9°43'52"	47.00'	7.98'	7.97'
C 3	73°08'37"	47.00'	60.00'	56.01'
C 4	48°45'45"	47.00'	40.00'	38.80'
C 5	48°45'44"	47.00'	40.00'	38.80'
C 6	5°57'28"	47.00'	4.89'	4.89'
C 7	37°51'49"	48.00'	31.72'	31.15'
C 8	39°47'16"	48.00'	33.33'	32.67'
C 9	7°53'00"	47.00'	6.47'	6.46'
C 10	39°47'15"	48.00'	33.33'	32.67'
C 11	25°30'03"	47.00'	212.87'	72.27'
C 12	25°34'31"	47.00'	212.93'	72.23'
C 13	7°52'48"	47.00'	6.46'	6.46'

RADIAL DATA:

RADIAL NUMBER	RADIAL BEARING	RADIUS
R 1	N 48°21'42" W	47.00'
R 2	N 58°05'40" W	47.00'
R 3	S 48°45'49" W	47.00'
R 4	S 00°00'04" W	47.00'
R 5	S 48°45'40" E	47.00'
R 6	N 58°05'37" E	47.00'
R 7	N 52°08'15" E	47.00'
R 8	S 73°08'35" W	47.00'
R 9	S 24°22'51" W	47.00'
R 10	S 24°22'54" E	47.00'
R 11	S 73°08'38" E	47.00'
R 12	N 50°12'49" E	47.00'
R 13	N 50°12'40" W	47.00'

LINE DATA:

LINE NUMBER	BEARING	DISTANCE
L 1	N 00°03'41" E	5.00'
L 2	S 89°59'59" E	10.00'
L 3	S 89°59'59" E	7.50'
L 4	N 45°00'44" E	15.11'
L 5	S 44°59'56" E	13.21'
L 6	S 89°59'56" E	10.00'
L 7	N 45°00'04" E	13.21'
L 8	S 89°59'56" E	2.00'
L 9	N 00°00'04" E	9.69'
L 10	N 00°00'04" E	12.01'
L 11	N 00°00'04" E	12.00'
L 12	N 00°00'04" E	14.50'
L 13	N 00°00'04" E	78.50'
L 14	N 00°00'04" E	65.00'
L 15	N 00°00'04" E	29.70'
L 16	N 00°00'04" E	78.20'

