



Prepared on Tue Apr 02 14:16:37 2013

Street Names, Addresses and (Lot Numbers) for T5210



FINAL MAP OF TRACT NO. 5210

A PLANNED DEVELOPMENT
IN THE CITY OF FRESNO, FRESNO COUNTY, CALIFORNIA
SURVEYED AND PLATTED IN NOVEMBER 2002
BY YAMABE & HORN ENGINEERING, INC.
CONSISTING OF TWO SHEETS
SHEET 2 OF 2

- LEGEND:**
- ▼ NOW OFFERED FOR DEDICATION FOR PUBLIC STREET PURPOSES.
 - ▲ INDICATES RELINQUISHMENT OF DIRECT ACCESS RIGHTS
 - PPUE PLANTING AND PUBLIC UTILITY EASEMENT NOW OFFERED FOR DEDICATION FOR PUBLIC USE.
 - PUE PUBLIC UTILITY EASEMENT NOW OFFERED FOR DEDICATION FOR PUBLIC USE.
 - FOUND 3/4" IRON PIPE, DOWN 0.5', UNLESS OTHERWISE NOTED
 - SET 3/4" IRON PIPE, 30" LONG, DOWN 6" BELOW GROUND, TAGGED "RCE 30501", UNLESS OTHERWISE NOTED
 - ⊙ SET 3/4" x 30" LONG IRON PIPE, 4" UP IN 6" DIAMETER x 30" P.C.C. MONUMENT, DOWN 6" BELOW GROUND, TAGGED "RCE 30501"
 - FD FOUND
 - ORFC OFFICIAL RECORDS FRESNO COUNTY
 - F.C.R. FRESNO COUNTY RECORDS
 - TF TIES FIT
 - FCBCM FRESNO COUNTY BRASS CAP MONUMENT
 - LE LANDSCAPE EASEMENT NOW OFFERED FOR DEDICATION FOR PUBLIC USE
 - () DATA PER RECORD OF SURVEY RECORDED IN BOOK 32 OF RECORD OF SURVEYS AT PAGE 70, F.C.R.
 - [] DATA PER MAP OF NEWHALL TRACT RECORDED IN BOOK 2 OF RECORD OF SURVEYS AT PAGE 42, F.C.R.
 - { } DATA PER PARCEL MAP 5675 RECORDED IN BOOK 37, OF PARCEL MAPS, AT PAGE 29, F.C.R.
 - BLUE BORDER INDICATES LIMITS OF SUBDIVISION

BASIS OF BEARINGS
THE NORTH LINE OF THE SOUTHWEST 1/4 OF SECTION 18 TOWNSHIP 14 SOUTH, RANGE 21 EAST, MOUNT DIABLO BASE AND MERIDIAN, TAKEN TO BE NORTH 86°43'31" EAST PER RECORD OF SURVEY FILED WITH FRESNO COUNTY RECORDS IN BOOK 32 AT PAGE 70.

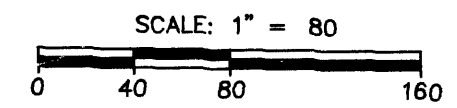
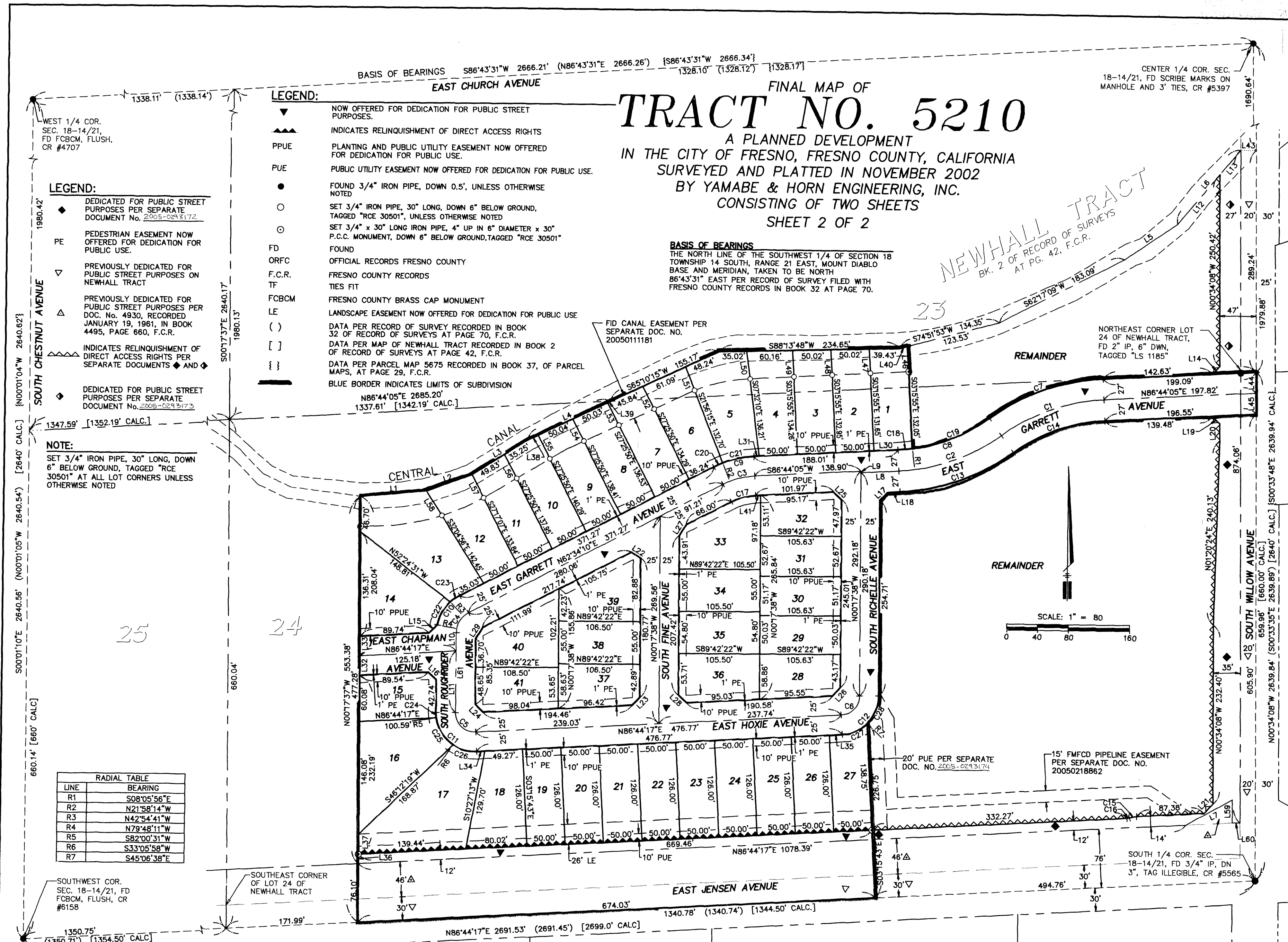
- LEGEND:**
- ◆ DEDICATED FOR PUBLIC STREET PURPOSES PER SEPARATE DOCUMENT No. 2005-0293172
 - PE PEDESTRIAN EASEMENT NOW OFFERED FOR DEDICATION FOR PUBLIC USE.
 - ▽ PREVIOUSLY DEDICATED FOR PUBLIC STREET PURPOSES ON NEWHALL TRACT
 - △ PREVIOUSLY DEDICATED FOR PUBLIC STREET PURPOSES PER DOC. No. 4930, RECORDED JANUARY 19, 1961, IN BOOK 4495, PAGE 660, F.C.R.
 - ◆ INDICATES RELINQUISHMENT OF DIRECT ACCESS RIGHTS PER SEPARATE DOCUMENTS ◆ AND ◆
 - ◆ DEDICATED FOR PUBLIC STREET PURPOSES PER SEPARATE DOCUMENT No. 2005-0293173

NOTE:
SET 3/4" IRON PIPE, 30" LONG, DOWN 6" BELOW GROUND, TAGGED "RCE 30501" AT ALL LOT CORNERS UNLESS OTHERWISE NOTED

LINE	BEARING
R1	S08°05'56"E
R2	N21°58'14"W
R3	N42°54'41"W
R4	N79°48'11"W
R5	S82°00'31"W
R6	S33°05'58"W
R7	S45°06'38"E

LINE	LENGTH	BEARING
L1	85.82'	S84°49'46"W
L2	62.42'	S70°03'38"W
L3	85.08'	S57°50'51"W
L4	119.16'	S64°43'17"W
L5	83.34'	S55°09'02"W
L6	126.00'	S39°54'26"W
L7	68.34'	S80°42'07"W
L8	49.21'	S86°44'05"W
L9	2.00'	N00°17'38"W
L10	23.74'	N00°17'38"W
L11	79.69'	N00°17'38"W
L12	84.41'	N39°54'26"E
L13	41.59'	N39°54'26"E
L14	13.61'	S43°06'48"W
L15	15.34'	N47°08'02"E
L16	14.61'	S46°44'01"E
L17	14.71'	S45°24'33"W
L18	15.03'	S86°44'05"W
L19	13.85'	N46°51'43"W
L20	21.94'	S00°34'08"E
L21	17.07'	N43°05'04"E
L22	14.53'	S58°48'38"E
L23	14.82'	S43°15'49"W
L24	14.61'	S46°44'11"E
L25	14.61'	S46°44'17"E
L26	14.82'	N43°14'48"E
L27	16.93'	S31°10'28"W
L28	14.62'	S46°44'54"E
L29	16.93'	S31°10'58"W
L30	31.21'	N86°44'05"E
L31	6.80'	S86°44'05"W
L32	25.03'	N00°17'37"W
L33	25.03'	N00°17'37"W
L34	10.86'	N86°44'17"E
L35	16.64'	N86°44'17"E
L36	12.02'	S00°17'37"E
L37	26.03'	S00°17'37"E
L38	14.88'	N64°43'17"E
L39	4.21'	N64°43'17"E
L40	10.82'	N74°51'53"E
L41	6.80'	N86°44'05"E
L42	20.00'	N89°25'52"E
L43	27.03'	S00°34'08"E
L44	27.03'	S00°34'08"E
L45	32.84'	N03°15'55"W
L46	31.65'	N03°15'55"W
L47	32.95'	N03°15'55"W
L48	34.26'	N03°15'55"W
L49	35.93'	N07°32'10"W
L50	32.70'	N21°56'15"W
L51	32.49'	N27°25'50"W
L52	32.53'	N27°25'50"W
L53	32.22'	N27°25'50"W
L54	34.45'	S27°25'50"E
L55	35.07'	N27°25'50"W
L56	33.78'	N27°17'07"W
L57	38.05'	N32°04'56"W
L58	30.03'	N00°34'08"W
L59	10.01'	N86°44'17"E
L60	103.43'	N00°17'38"W

CURVE	DELTA	RADIUS	LENGTH
C1	32°47'54"	250.00'	143.11'
C2	32°47'54"	250.00'	143.11'
C3	24°09'55"	102.00'	43.02'
C4	62°31'48"	29.00'	31.82'
C5	92°58'05"	25.00'	40.56'
C6	87°01'55"	25.00'	37.97'
C7	32°47'54"	277.00'	158.57'
C8	32°47'54"	223.00'	127.65'
C9	24°09'55"	127.00'	53.56'
C10	52°22'21"	54.00'	49.36'
C11	92°58'05"	50.00'	81.13'
C12	87°01'55"	50.00'	75.95'
C13	32°47'54"	277.00'	158.57'
C14	32°47'54"	223.00'	127.65'
C15	18°11'42"	30.00'	9.53'
C16	18°11'42"	10.00'	3.18'
C17	24°09'55"	77.00'	32.48'
C18	4°50'01"	223.00'	18.81'
C19	27°57'53"	223.00'	108.84'
C20	52°22'21"	127.00'	12.10'
C21	18°42'19"	127.00'	41.46'
C22	36°53'30"	54.00'	34.77'
C23	15°28'51"	54.00'	14.59'
C24	7°41'51"	50.00'	6.72'
C25	48°54'33"	50.00'	42.68'
C26	36°21'41"	50.00'	31.73'
C27	41°50'55"	50.00'	36.52'
C28	45°11'00"	50.00'	39.43'



PREPARED BY:
YAMABE & HORN ENGINEERING, INC.
1300 EAST SHAW AVENUE, SUITE 176
FRESNO, CA 93710
PH. 559-244-3123 FAX 559-244-3120