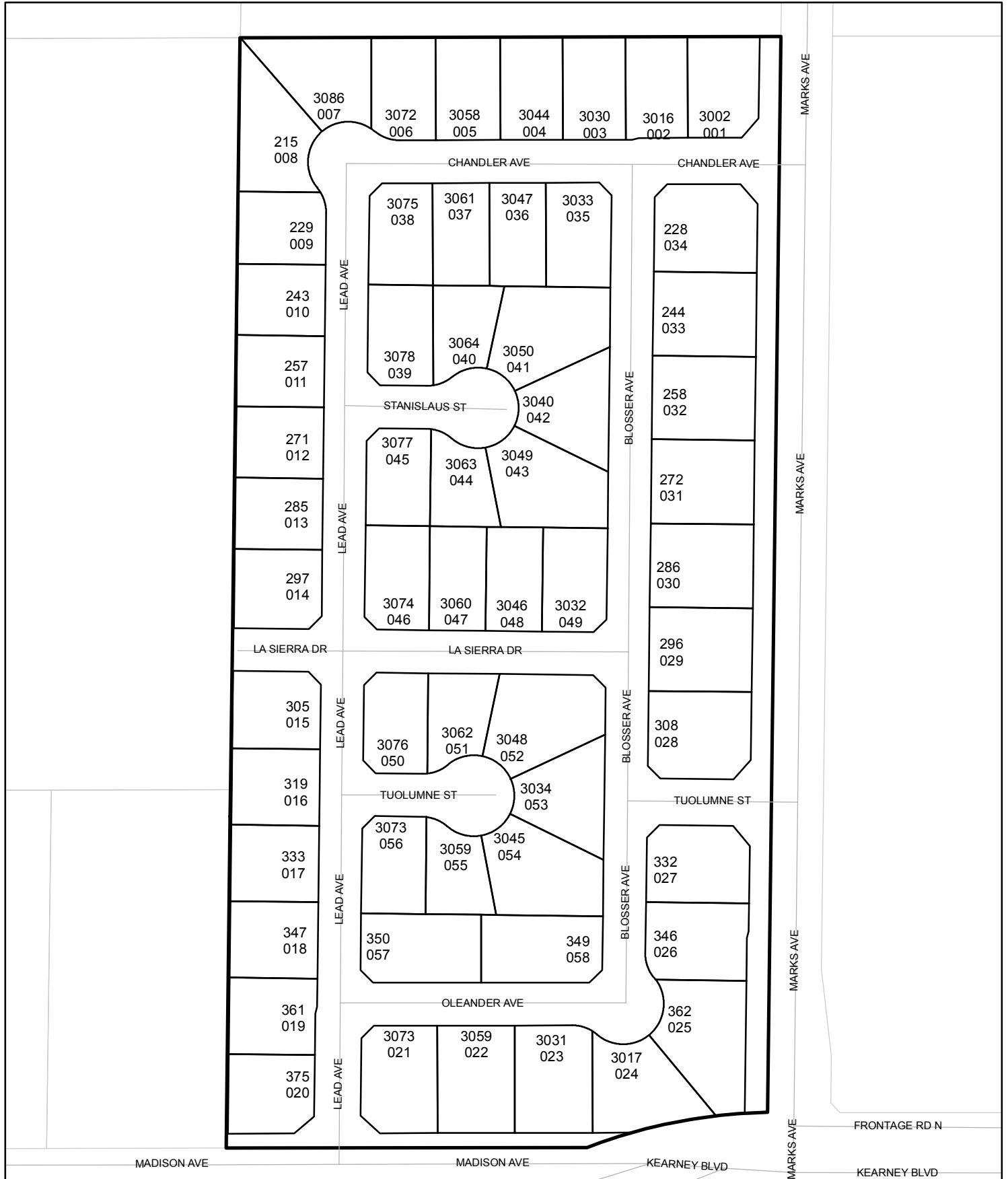




Street Names, Addresses and (Lot Numbers) for T5206

Prepared on Thu Nov 16 22:43:02 2017

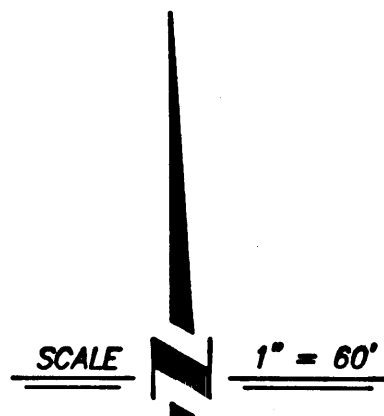
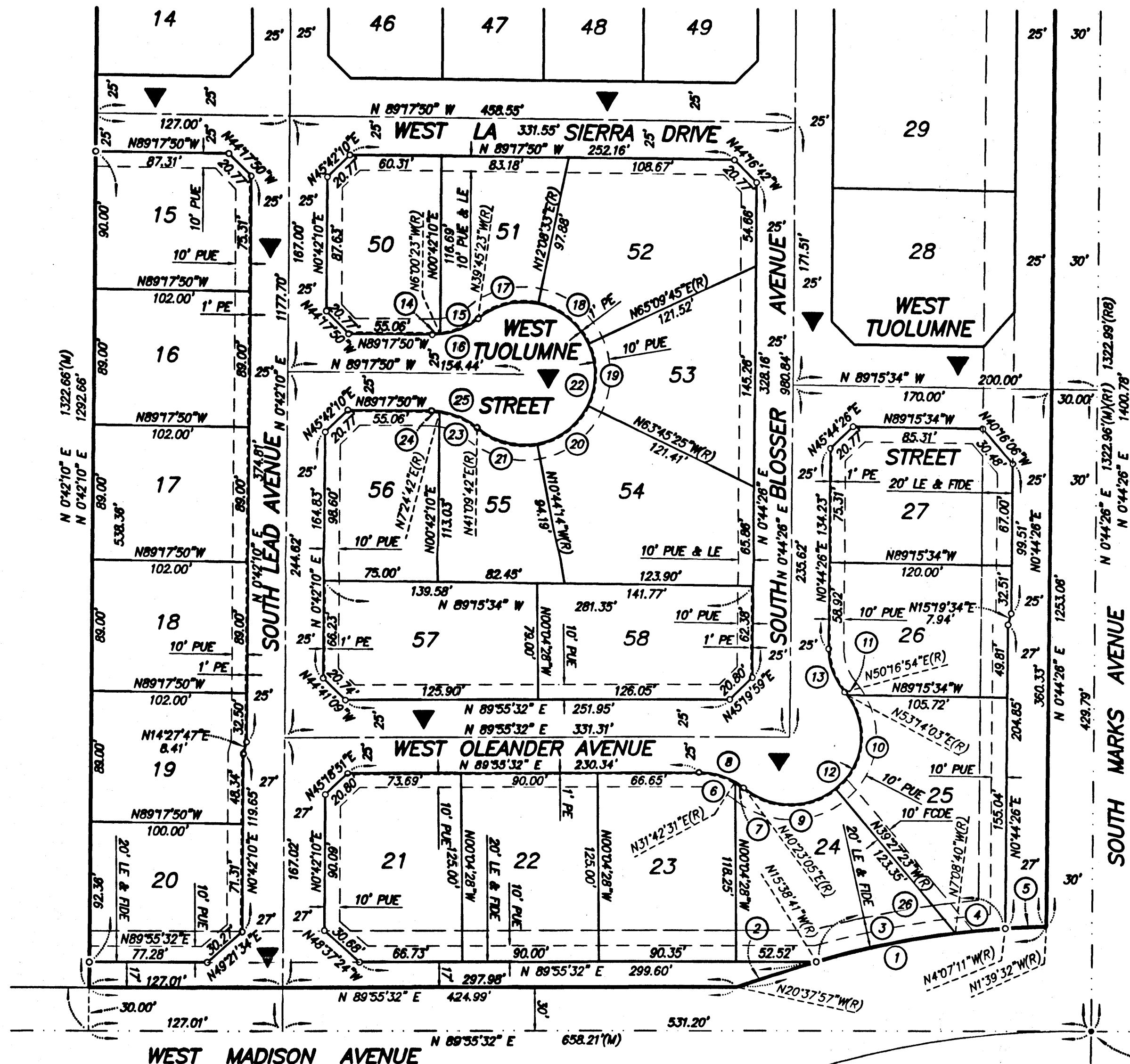


FINAL MAP OF
TRACT NO. 5206
RUNNING HORSE

BEING THE EAST HALF OF THE SOUTHEAST
 QUARTER OF THE NORTHEAST QUARTER OF
 SECTION 12, TOWNSHIP 14 SOUTH, RANGE 19
 EAST, MOUNT DIABLO BASE AND MERIDIAN,
 IN THE CITY OF FRESNO,
 FRESNO COUNTY, CALIFORNIA
THOMPSON-HYSELL ENGINEERS
 A DIVISION OF THE KEITH COMPANIES

1016 12th STREET MODESTO, CALIFORNIA
 NOVEMBER, 2003
 CONSISTING OF 4 SHEETS
 SHEET 3 OF 4

SEE SHEET 4



LOT AREA TABLE:

LOT	SF
15	9072
16	9078
17	9078
18	9078
19	8973
20	8944
21	10801
22	11250
23	11242
24	11280
25	1326.4
26	1057.2
27	1046.2
50	8559
51	7528
52	1289.9
53	1005.5
54	1255.6
55	722.7
56	8390
57	11100
58	1090.7

CURVE DATA TABLE:

NO.	DELTA	RADIUS	LENGTH	CHORD	CHORD BEARING
1	18°58'25"	630.00'	208.62'	207.67'	S78°51'16"W
2	04°59'16"	630.00'	54.84'	54.82'	S71°51'41"W
3	08°30'01"	630.00'	93.46'	93.38'	S78°36'19"W
4	03°01'29"	630.00'	33.26'	33.26'	S84°22'05"W
5	02°27'39"	630.00'	27.06'	27.05'	S87°06'39"W
6	31°46'59"	45.00'	24.96'	24.64'	N74°10'58"W
7	08°40'34"	45.00'	6.81'	6.81'	N53°57'12"W
8	40°27'33"	45.00'	31.77'	31.12'	N69°50'42"W
9	79°50'28"	47.00'	65.49'	60.32'	S89°32'09"E
10	87°18'34"	47.00'	71.62'	64.89'	N06°53'20"E
11	02°57'09"	47.00'	2.42'	2.42'	N38°14'32"W
12	170°06'11"	47.00'	139.53'	93.65'	N45°19'59"E
13	40°27'32"	45.00'	31.78'	31.12'	S19°29'20"E
14	06°42'33"	45.00'	5.27'	5.27'	N87°20'53"E
15	33°45'00"	45.00'	26.51'	26.13'	N67°07'07"E
16	40°27'33"	45.00'	31.78'	31.12'	N70°28'23"E
17	51°53'56"	47.00'	42.57'	41.13'	S76°11'35"W
18	53°01'12"	47.00'	43.49'	41.96'	N51°20'51"W
19	51°04'50"	47.00'	41.90'	40.53'	N00°42'10"E
20	53°01'11"	47.00'	43.49'	41.96'	N52°45'11"E
21	51°53'56"	47.00'	42.57'	41.13'	S74°47'16"E
22	260°55'05"	47.00'	214.03'	71.52'	N00°42'10"E
23	33°45'00"	45.00'	26.51'	26.13'	N65°42'48"W
24	06°42'33"	45.00'	5.27'	5.27'	N85°56'34"W
25	40°27'33"	45.00'	31.78'	31.12'	N69°04'04"W
26	11°31'30"	630.00'	126.72'	126.51'	S80°07'04"W

WEST KEARNEY BOULEVARD
 FOUND EAST 1/4 CORNER OF SECTION 12, T.14 S.
 R.19 E., M.D.B. & M. CORNER FALLS ON MANHOLE LID.
 ESTABLISHED POSITION BY TIES ON FILE WITH FRESNO
 COUNTY SURVEYOR, CORNER RECORD DOCUMENT NO. 5174.

FINAL MAP OF
TRACT NO. 5206
RUNNING HORSE

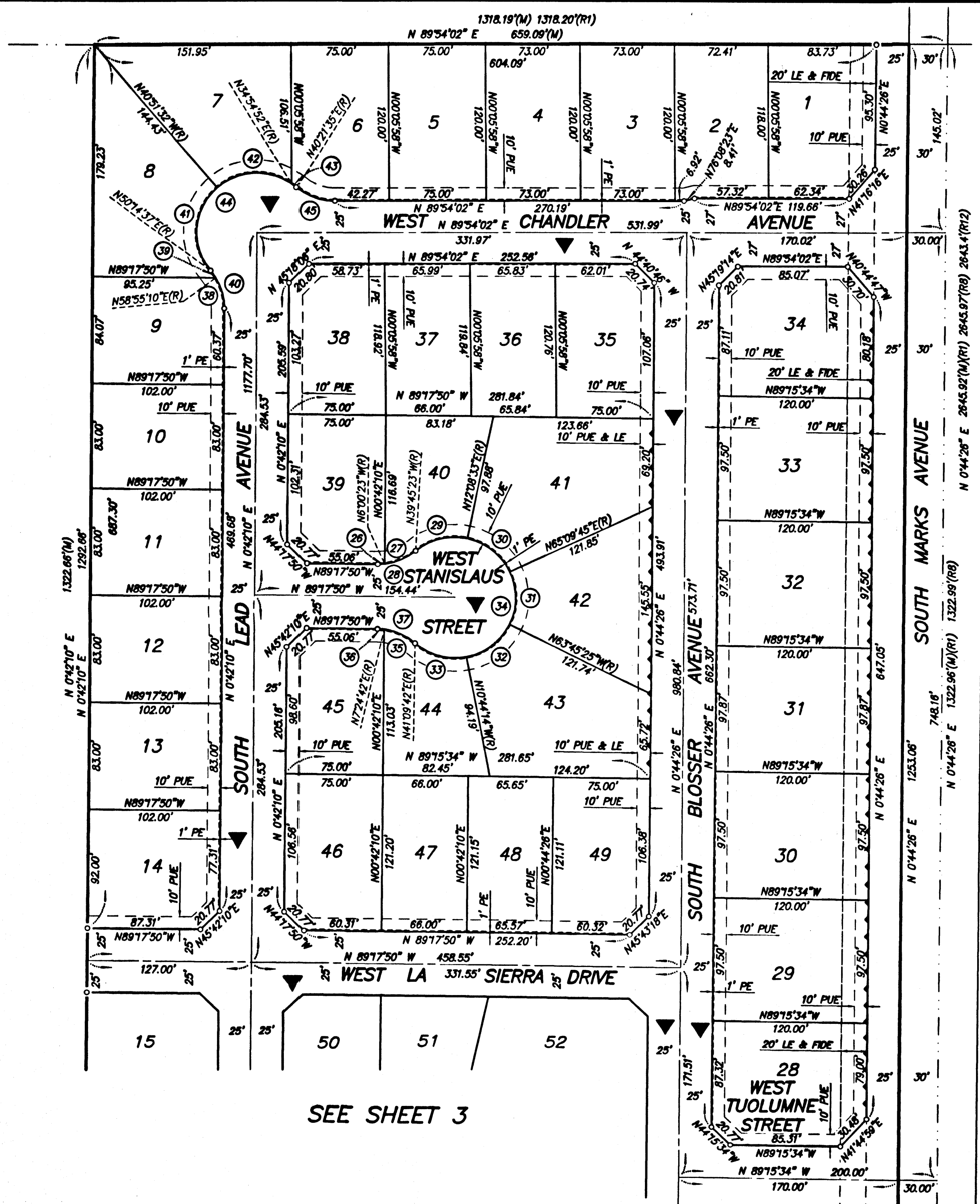
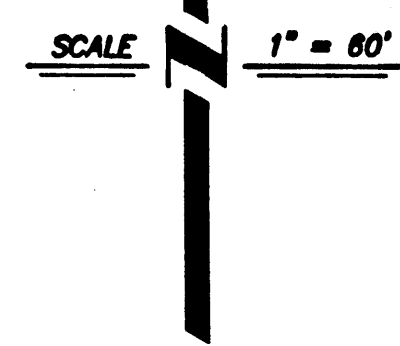
BEING THE EAST HALF OF THE SOUTHEAST
 QUARTER OF THE NORTHEAST QUARTER OF
 SECTION 12, TOWNSHIP 14 SOUTH, RANGE 19
 EAST, MOUNT DIABLO BASE AND MERIDIAN,
 IN THE CITY OF FRESNO,
 FRESNO COUNTY, CALIFORNIA

THOMPSON-HYSELL ENGINEERS

A DIVISION OF THE KEITH COMPANIES

1016 12th STREET MODESTO, CALIFORNIA
 NOVEMBER, 2003

CONSISTING OF 4 SHEETS
 SHEET 4 OF 4



LOT AREA TABLE

LOT	SF
1	9555
2	8566
3	8760
4	8760
5	9000
6	8858
7	10992
8	11223
9	8523
10	8466
11	8466
12	8466
13	8466
14	9276
15	11902
16	11700
17	11744
18	11700
19	11700
20	11968
21	9095
22	7919
23	7878
24	8675
25	8667
26	7528
27	13027
28	10099
29	12576
30	7227
31	8390
32	8984
33	7998
34	7947
35	8974

CURVE DATA TABLE

NO.	DELTA	RADIUS	LENGTH	CHORD	CHORD BEARING
26	06°42'33"	45.00'	5.27'	5.27'	N87°20'53"E
27	33°45'00"	45.00'	26.51'	26.13'	N67°07'07"E
28	40°27'33"	45.00'	31.78'	31.12'	N70°28'23"E
29	51°53'56"	47.00'	42.57'	41.13'	S76°11'35"W
30	53°01'12"	47.00'	43.49'	41.96'	N51°20'51"W
31	51°04'50"	47.00'	41.90'	40.53'	N00°42'10"E
32	53°01'11"	47.00'	43.49'	41.96'	N52°45'11"E
33	51°53'56"	47.00'	42.57'	41.13'	S74°47'16"E
34	260°55'05"	47.00'	214.02'	71.52'	N00°42'10"E
35	33°45'00"	45.00'	26.51'	26.13'	N65°42'48"W
36	06°42'33"	45.00'	5.27'	5.27'	N85°56'34"W
37	40°27'33"	45.00'	31.78'	31.12'	N69°04'04"W
38	31°47'00"	45.00'	24.96'	24.64'	N15°11'20"W
39	08°40'33"	45.00'	6.81'	6.81'	N35°25'06"W
40	40°27'33"	45.00'	31.77'	31.12'	N19°31'37"W
41	88°53'51"	47.00'	72.92'	65.83'	S04°41'32"W
42	75°46'24"	47.00'	62.16'	57.73'	S87°01'40"W
43	05°26'43"	47.00'	4.47'	4.47'	N52°21'46"W
44	170°06'58"	47.00'	139.55'	93.65'	S45°18'06"W
45	40°27'33"	45.00'	31.78'	31.12'	S69°52'11"E

SEE SHEET 3