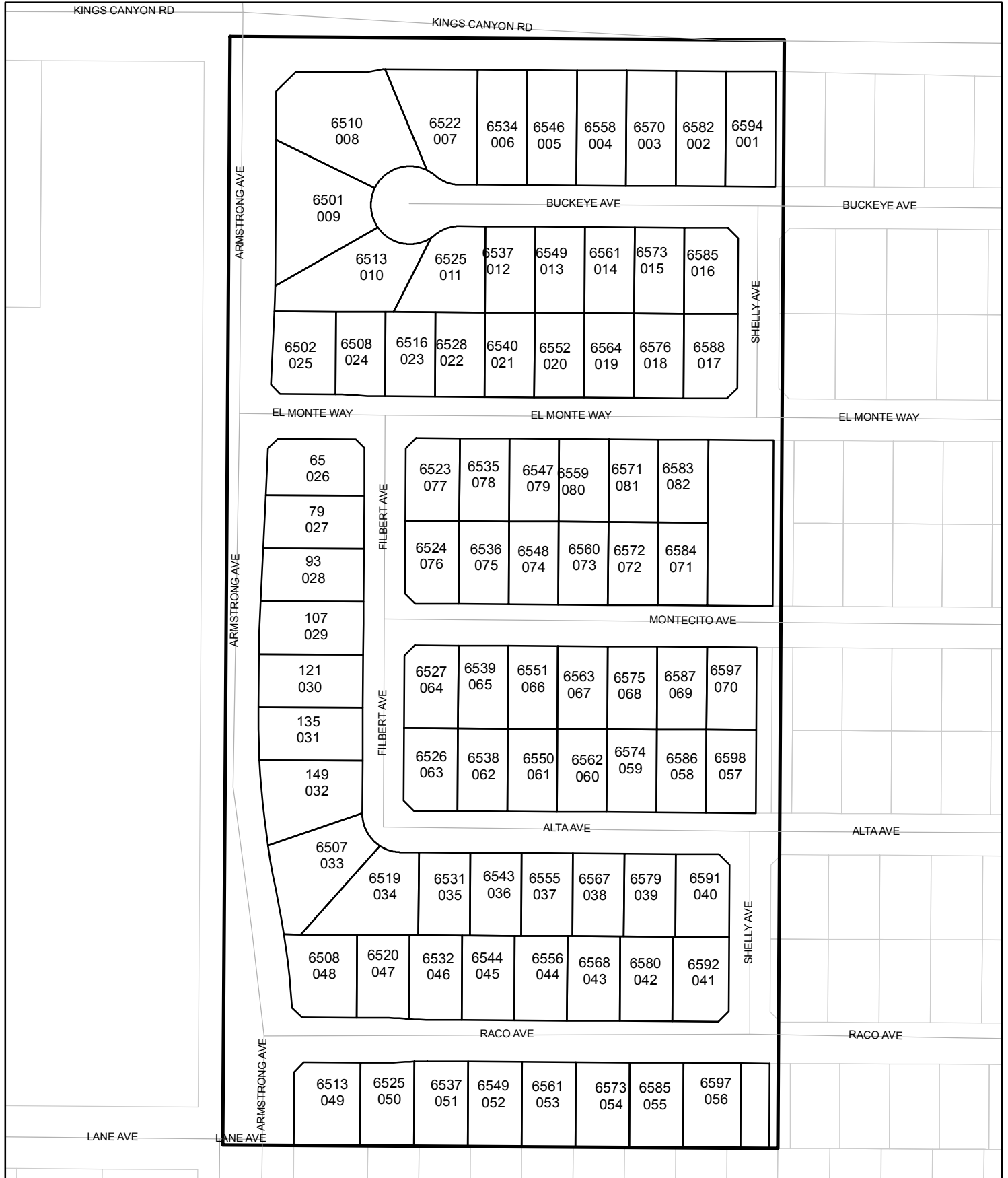




Street Names, Addresses and (Lot Numbers) for T5196

Prepared on Tue Apr 02 14:19:30 2013



FINAL MAP OF TRACT NO. 5196

IN THE CITY OF FRESNO, FRESNO COUNTY, CALIFORNIA
SURVEYED AND PLATTED IN OCTOBER 2004
BY YAMABE & HORN ENGINEERING, INC.
CONSISTING OF TWO SHEETS

SHEET 2 OF 2

CURVE	DELTA	RADIUS	LENGTH
C19	714.28'	47.00'	5.84'
C20	8632.03'	47.00'	72.82'
C21	5955.28'	47.00'	49.18'
C22	9035.18'	47.00'	74.31'
C23	1437.91'	47.00'	12.00'
C24	118.13'	1027.00'	22.77'
C25	545.55'	1027.00'	10.334'
C26	358.45'	1027.00'	7.132'
C27	137.02'	1090.00'	37.11'
C28	442.00'	1090.00'	89.41'
C29	419.56'	350.00'	26.46'
C30	419.56'	350.00'	26.46'
C31	419.56'	350.00'	26.46'
C32	1200.52'	1050.00'	220.18'
C33	1200.52'	1050.00'	220.18'
C34	1172.03'	1050.00'	205.27'
C35	448.49'	1050.00'	14.91'
C36	226.27'	1050.00'	44.73'
C37	934.25'	1050.00'	175.45'

CURVE	DELTA	LENGTH
C1	419.56'	350.00'
C2	419.56'	350.00'
C3	419.56'	350.00'
C4	419.56'	350.00'
C5	9070.00'	47.00'
C6	4027.33'	45.00'
C7	26055.06'	47.00'
C8	4027.33'	45.00'
C9	1811.42'	10.00'
C10	1811.57'	30.00'
C11	1100.53'	1027.00'
C12	639.02'	1090.00'
C13	146.35'	350.00'
C14	233.21'	350.00'
C15	035.06'	350.00'
C16	324.50'	350.00'
C17	324.50'	350.00'
C18	5718.57'	47.00'

CURVE	DELTA	LENGTH
C19	714.28'	5.84'
C20	8632.03'	47.00'
C21	5955.28'	47.00'
C22	9035.18'	47.00'
C23	1437.91'	47.00'
C24	118.13'	1027.00'
C25	545.55'	1027.00'
C26	358.45'	1027.00'
C27	137.02'	1090.00'
C28	442.00'	1090.00'
C29	419.56'	350.00'
C30	419.56'	350.00'
C31	419.56'	350.00'
C32	1200.52'	1050.00'
C33	1200.52'	1050.00'
C34	1172.03'	1050.00'
C35	448.49'	1050.00'
C36	226.27'	1050.00'
C37	934.25'	1050.00'

RADIAL	BEARING
R1	S001054°E
R2	N043050°W
R3	N024415°W
R4	N001054°W
R5	N001054°W
R6	S040902°W
R7	S031356°W
R8	N001054°W
R9	N001054°W
R10	S323209°W
R11	S894908°W
R12	N001054°W
R13	S403827°E
R14	S332359°E
R15	S550804°W
R16	N645630°W
R17	N293848°E

RADIAL	BEARING
R18	S401639°W
R19	S001054°E
R20	S894931°W
R21	S894931°W
R22	S894931°W
R23	S894931°W
R24	S894931°W
R25	S894931°W
R26	S894931°W
R27	S894931°W
R28	S894931°W
R29	S894931°W
R30	S894931°W
R31	S894931°W
R32	S894931°W
R33	S894931°W
R34	S894931°W
R35	S894931°W

LINE	LENGTH	BEARING
L1	16.53'	N444918°E
L2	16.80'	S427375°E
L3	27.73'	N894906°E
L4	31.93'	N894906°E
L5	29.46'	N014404°E
L6	14.47'	N014404°E
L7	12.46'	S445032°W
L8	17.91'	S451113°E
L9	21.70'	N894906°E
L10	17.45'	S451052°E
L11	17.45'	N444849°E
L12	17.45'	S451130°E
L13	16.63'	N894906°E
L14	17.45'	N444849°E
L15	17.45'	N444849°E
L16	17.45'	S451120°E
L17	21.05'	N894906°E
L18	25.01'	N894906°E
L19	76.04'	S001100°E

LINE	LENGTH	BEARING
L20	18.71'	N894906°E
L21	18.71'	N894906°E
L22	31.93'	N894906°E
L23	29.46'	N014404°E
L24	14.47'	N014404°E
L25	12.46'	S445032°W
L26	17.91'	S451113°E
L27	21.70'	N894906°E
L28	17.45'	S451052°E
L29	17.45'	N444849°E
L30	16.54'	S454635°W
L31	30.62'	N014404°E
L32	30.62'	N014404°E
L33	35.36'	N444958°E
L34	19.13'	N894906°E
L35	19.13'	N894906°E
L36	20.00'	N781655°E
L37	23.01'	N894906°E
L38	25.01'	N894906°E
L39	25.01'	N894906°E
L40	76.04'	S001100°E

LEGEND

- FOUND 3/4" IRON PIPE, DOWN 0.5', TAGGED "RCE 26996", UNLESS OTHERWISE NOTED
- SET 3/4" IRON PIPE, 30' LONG, 4" UP IN 6" DIAMETER X 30" P.C.C. MONUMENT, DOWN 6" BELOW GROUND, TAGGED RCE 30501
- ▽ EASEMENT FOR PUBLIC STREET PURPOSES, RECORDED OCTOBER 18, 1981, IN BOOK X, PAGE 1, OF DEEDS.
- ▷ NOW OFFERED FOR DEDICATION FOR PUBLIC STREET PURPOSES
- ▷ EASEMENT FOR PUBLIC STREET PURPOSES, RECORDED FEBRUARY 12, 1997 AS INSTRUMENT NO. 97020689, O.R.F.C.
- ▷ EASEMENT FOR PUBLIC STREET PURPOSES, RECORDED JULY 21, 1910, IN BOOK 452, PAGE 448 OF DEEDS.
- ▽ PREVIOUSLY DEDICATED FOR PUBLIC STREET PURPOSES RECORDED 5/20/66 AS INSTRUMENT NO. 22020507 O.R.F.C.
- ▽ FOUND
- FD OFFICIAL RECORDS FRESNO COUNTY
- ORFC FRESNO COUNTY RECORDS
- F.C.R. FRESNO COUNTY RECORDS
- P.U.E. PUBLIC UTILITY EASEMENT NOW OFFERED FOR DEDICATION FOR PUBLIC USE
- P.E. PEDESTRIAN EASEMENT NOW OFFERED FOR DEDICATION FOR PUBLIC USE
- P.P.U.E. PLANTING AND PUBLIC UTILITY EASEMENT NOW OFFERED FOR DEDICATION FOR PUBLIC USE
- L.E. LANDSCAPE EASEMENT NOW OFFERED FOR DEDICATION FOR PUBLIC USE
- BCM BRASS CAP MONUMENT
- (R) RADIAL BEARING
- () RECORD DATA PER TRACT NO. 1612, RECORDED IN VOL. 20 OF PLATS AT PAGE 37, F.C.R.
- [] RECORD DATA PER RECORD OF SURVEY, RECORDED IN BOOK 26 OF SURVEYS AT PAGE 29, F.C.R.
- <> RECORD DATA PER TRACT NO. 5123, RECORDED IN VOLUME 68, OF PLATS AT PAGES 41-43, F.C.R.
- { } RECORD DATA PER TRACT NO. 1752, RECORDED IN VOLUME 19 OF PLATS AT PAGE 76, F.C.R.
- (()) RECORDED DATA PER TRACT MAP NO. 5310 RECORDED IN VOLUME 72 OF PLATS AT PAGES 89 & 90, F.C.R.
- ==== INDICATES RELINQUISHMENT OF DIRECT ACCESS RIGHTS
- ==== BLUE BORDER INDICATES THE LIMITS OF THIS SUBDIVISION

NOTE

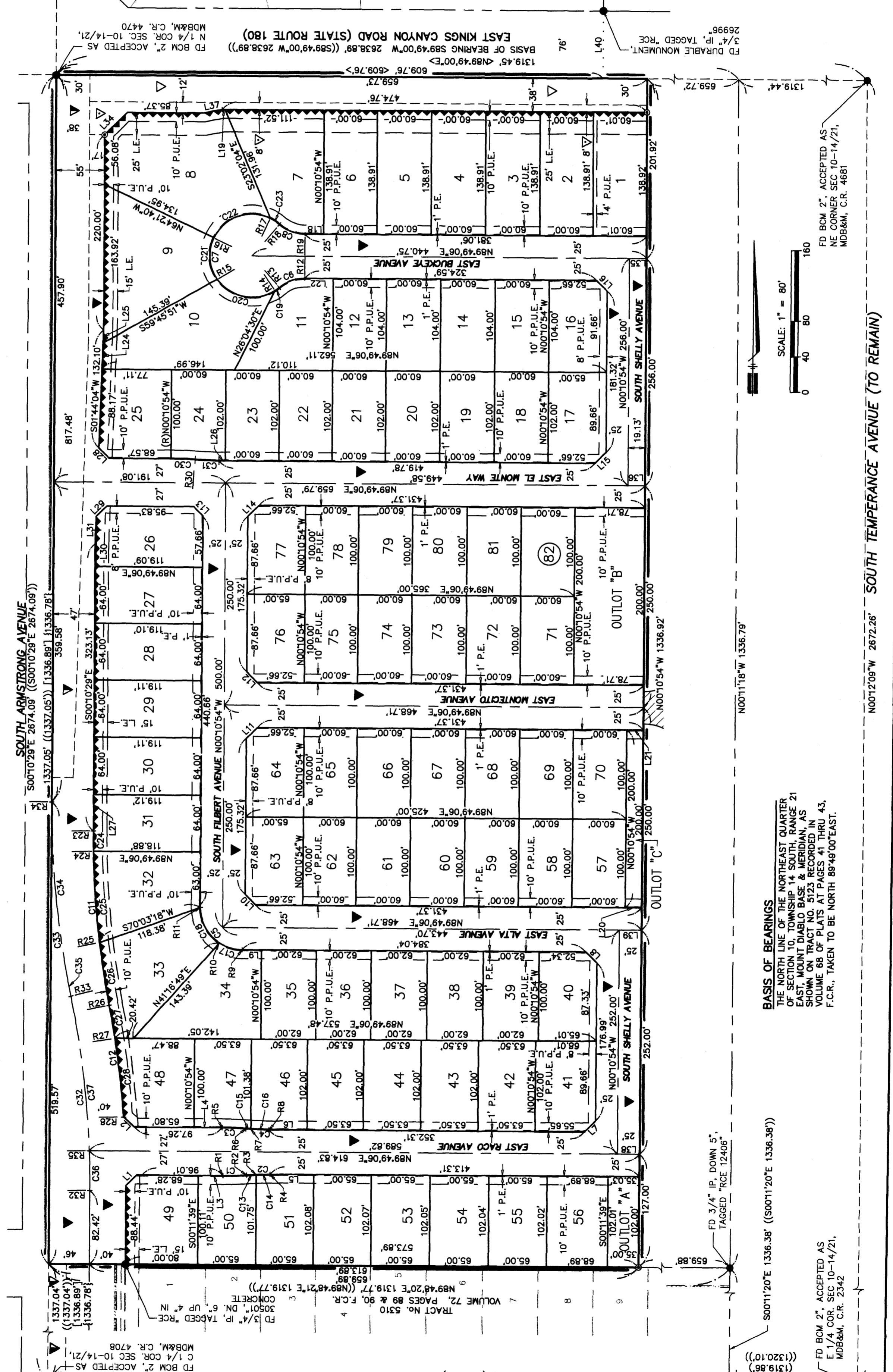
SET 3/4" IRON PIPE, DOWN 0.5', TAGGED "RCE 30501" AT ALL LOT CORNERS, UNLESS OTHERWISE NOTED

OUTLOT 'A' FOR FUTURE DEVELOPMENT
OUTLOT 'B' FOR OPEN SPACE
OUTLOT 'C' FOR OPEN SPACE

INDICATES RELINQUISHMENT OF DIRECT ACCESS RIGHTS

BLUE BORDER INDICATES THE LIMITS OF THIS SUBDIVISION

YAMABE & HORN ENGINEERING, INC.
1300 EAST SHAW AVENUE, SUITE 176
FRESNO, CA 93710
PH. 559-244-3123 FAX 559-244-3120



FD DURABLE MONUMENT, 3/4" IRON PIPE, TAGGED "RCE 26996", FOUND AT CORNER OF SECTION 10, TOWNSHIP 14 SOUTH, RANGE 21 EAST, MOUNT DIABLO BASE & MERIDIAN, AS SHOWN ON TRACT NO. 5123 RECORDED IN VOLUME 68 OF PLATS AT PAGES 41 THRU 43, F.C.R., TAKEN TO BE NORTH 89°49'00"EAST.

FD BCM 2", ACCEPTED AS NE CORNER SEC 10-14/21, MDB&M, C.R. 4681

FD BCM 2", ACCEPTED AS E 1/4 COR. SEC 10-14/21, MDB&M, C.R. 2342

FD BCM 2", ACCEPTED AS THE NORTH LINE OF THE NORTHEAST QUARTER OF SECTION 10, TOWNSHIP 14 SOUTH, RANGE 21 EAST, MOUNT DIABLO BASE & MERIDIAN, AS SHOWN ON TRACT NO. 5123 RECORDED IN VOLUME 68 OF PLATS AT PAGES 41 THRU 43, F.C.R., TAKEN TO BE NORTH 89°49'00"EAST.

SCALE: 1" = 80'

0 40 80 160

SOUTH ARMSTRONG AVENUE
SOUTH FILBERT AVENUE
SOUTH SHILLY AVENUE
SOUTH TEMPERANCE AVENUE (TO REMAIN)