



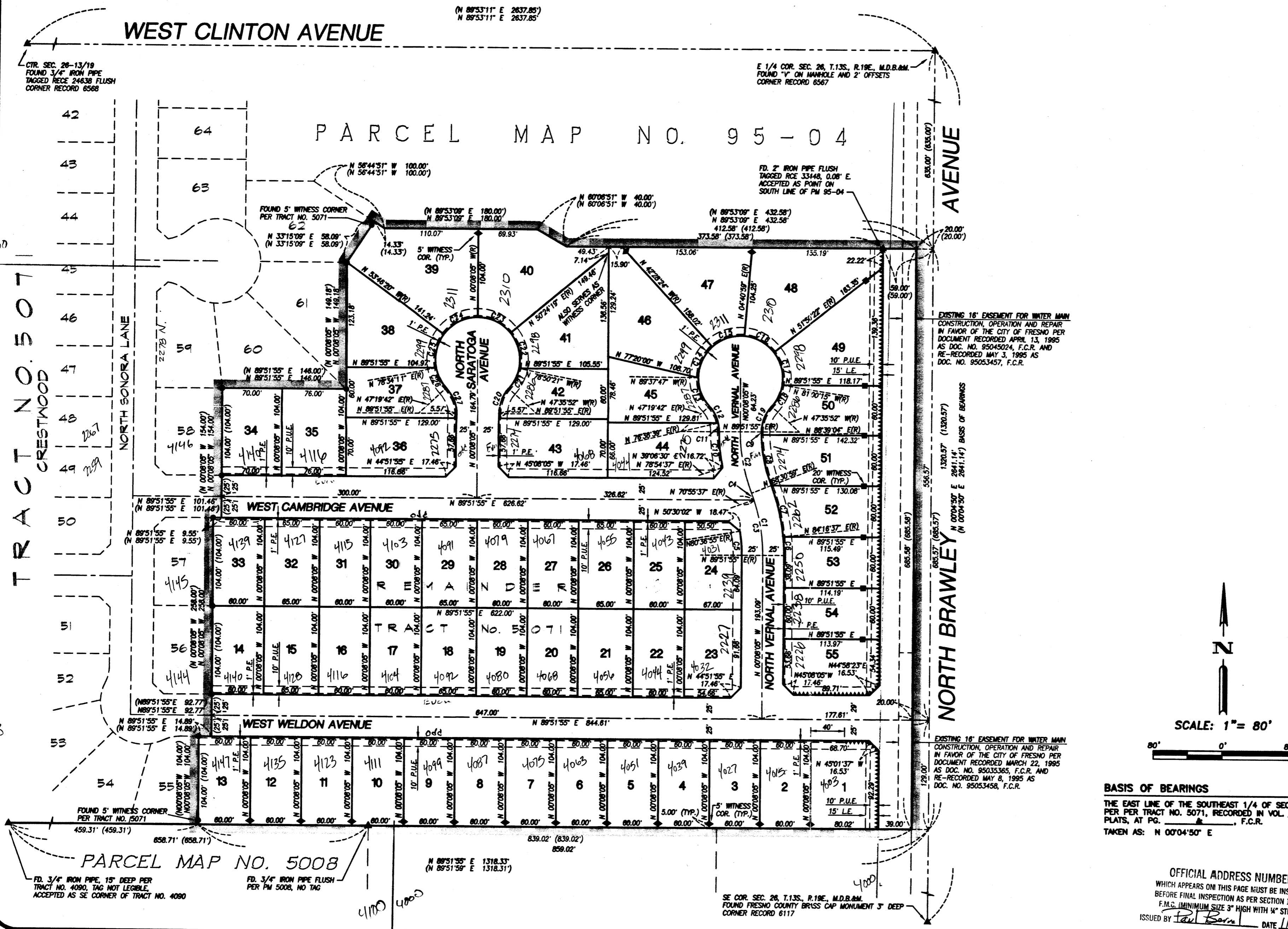
Prepared on Sat Apr 07 21:55:17 2018

Street Names, Addresses and (Lot Numbers) for T5190



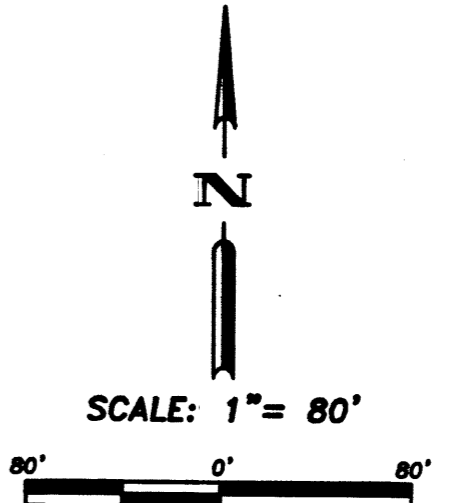
FINAL MAP OF TRACT NO. 5190 CRESTWOOD UNIT NO. 2

CURVE	DELTA	RADIUS	LENGTH	TANGENT	CHORD
C1	21°20'56"	200.00'	74.52'	37.70'	74.09'
C2	21°20'56"	200.00'	74.52'	37.70'	74.09'
C3	18°56'18"	200.00'	66.11'	33.36'	65.81'
C4	2°24'38"	200.00'	8.41'	4.21'	8.41'
C5	9°15'00"	175.00'	28.25'	14.16'	28.22'
C6	5°35'18"	225.00'	21.95'	10.98'	21.94'
C7	15°45'38"	225.00'	61.89'	31.14'	61.70'
C8	20°08'05"	175.00'	61.50'	31.07'	61.18'
C9	1°12'31"	175.00'	3.71'	1.85'	3.71'
C10	10°57'18"	225.00'	43.02'	21.56'	42.95'
C11	13°13'16"	45.00'	10.38'	5.22'	10.38'
C12	29°18'57"	45.00'	23.02'	11.77'	22.77'
C13	43°02'31"	50.00'	37.56'	19.72'	36.68'
C14	47°09'23"	50.00'	41.15'	21.82'	40.00'
C15	47°09'23"	50.00'	41.15'	21.82'	40.00'
C16	47°09'23"	50.00'	41.15'	21.82'	40.00'
C17	47°09'23"	50.00'	41.15'	21.82'	40.00'
C18	33°24'23"	50.00'	29.15'	15.00'	28.74'
C19	42°32'13"	45.00'	33.41'	17.52'	32.65'
C20	42°32'13"	45.00'	33.41'	17.52'	32.65'
C21	31°14'29"	50.00'	27.26'	13.98'	26.93'
C22	50°45'20"	50.00'	44.29'	23.72'	42.86'
C23	50°32'24"	50.00'	44.10'	23.60'	42.69'
C24	53°38'15"	50.00'	46.81'	25.28'	45.12'
C25	47°39'29"	50.00'	41.59'	22.08'	40.40'
C26	31°14'29"	50.00'	27.26'	13.98'	26.93'
C27	42°32'13"	45.00'	33.41'	17.52'	32.65'



NOTE: SET 3/4" IRON PIPE TAGGED PLS 4714 AT ALL LOT CORNERS.

- LEGEND**
- ▲ MONUMENT FOUND AND ACCEPTED AS DESCRIBED
 - FOUND 3/4" I.P. TAGGED PLS 4714 PER TRACT NO. 5071, REC. IN VOL. _____ OF PLATS, AT PG. _____, F.C.R.
 - ◆ SET 3/4" I.P. TAGGED PLS 4714 ON LOT LINE AS SHOWN, 5.00' FROM NEAREST LOT CORNER (DISTANCES SHOWN ARE TO THE TRUE CORNER)
 - SET 3/4" I.P. TAGGED PLS 4714 ON LOT LINE AS SHOWN, 20.00' FROM NEAREST LOT CORNER (DISTANCES SHOWN ARE TO THE TRUE CORNER)
 - () RECORD DATA PER TRACT NO. 5071, REC. IN VOL. _____ OF PLATS, AT PG. _____, F.C.R., OR CALCULATED THEREFROM.
 - P.U.E. PUBLIC UTILITY EASEMENT NOW OFFERED FOR DEDICATION FOR PUBLIC USE
 - L.E. LANDSCAPE EASEMENT NOW OFFERED FOR DEDICATION FOR PUBLIC USE
 - P.E. PEDESTRIAN EASEMENT NOW OFFERED FOR DEDICATION FOR PUBLIC USE
 - (R) RADIAL BEARING
 - RELINQUISHMENT OF DIRECT ACCESS RIGHTS



BASIS OF BEARINGS
THE EAST LINE OF THE SOUTHEAST 1/4 OF SEC. 26-13/19, PER PER TRACT NO. 5071, RECORDED IN VOL. _____ OF PLATS, AT PG. _____, F.C.R.

OFFICIAL ADDRESS NUMBERS WHICH APPEARS ON THIS PAGE MUST BE INSTALLED BEFORE FINAL INSPECTION AS PER SECTION 12-1304 F.M.C. (MINIMUM SIZE 3" HIGH WITH 1/4" STROKES) ISSUED BY *Paul Barron* DATE *1/16/04*

8405 N. FRESNO STREET
SUITE 300
FRESNO, CA 93720
TEL: (509) 440-2400
FAX: (509) 438-7554

Quad Knopf

SHEET 2 OF 2