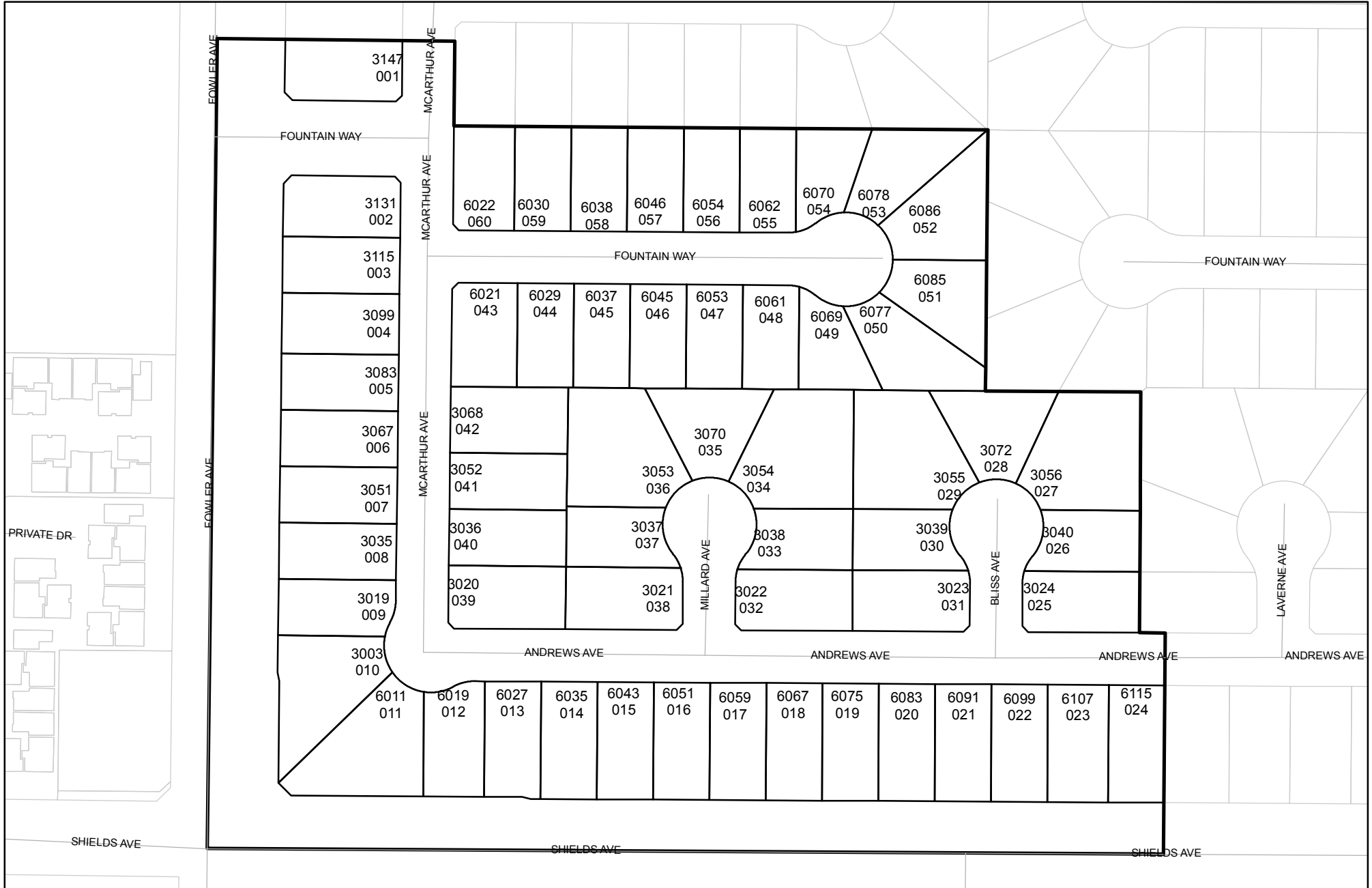




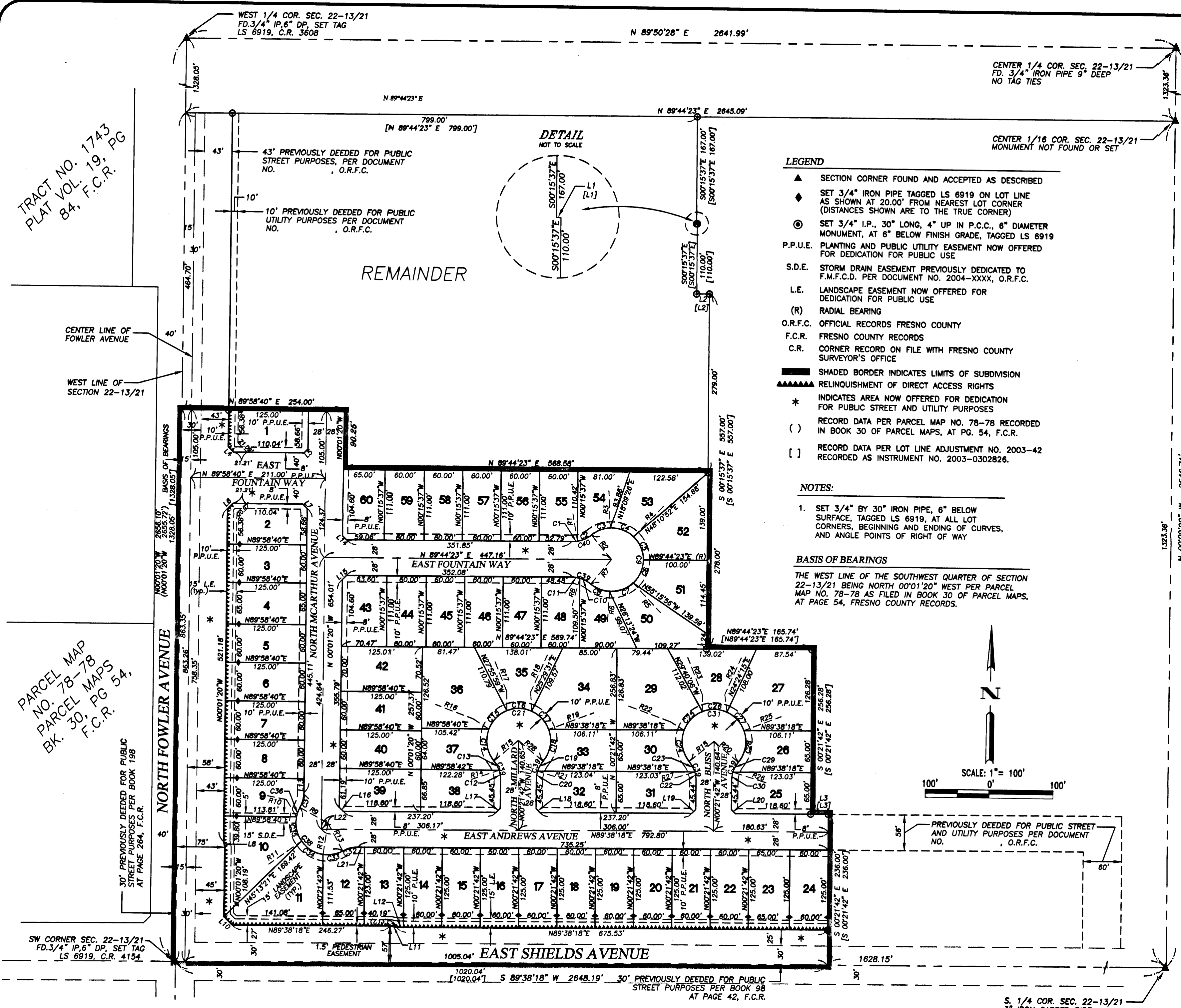
Prepared on Thu Nov 16 22:43:41 2017

Street Names, Addresses and (Lot Numbers) for T5189



FINAL MAP OF TRACT NO. 5189

COLBY PARK
 PHASE I OF TENTATIVE TRACT NO. 5189
 IN THE CITY OF FRESNO, COUNTY OF FRESNO, STATE OF CALIFORNIA
 FEBRUARY 2004



- LEGEND**
- ▲ SECTION CORNER FOUND AND ACCEPTED AS DESCRIBED
 - ◆ SET 3/4" IRON PIPE TAGGED LS 8919 ON LOT LINE AS SHOWN AT 20.00' FROM NEAREST LOT CORNER (DISTANCES SHOWN ARE TO THE TRUE CORNER)
 - ⊙ SET 3/4" I.P., 30" LONG, 4" UP IN P.C.C., 6" DIAMETER MONUMENT, AT 6" BELOW FINISH GRADE, TAGGED LS 6919
 - P.P.U.E. PLANTING AND PUBLIC UTILITY EASEMENT NOW OFFERED FOR DEDICATION FOR PUBLIC USE
 - S.D.E. STORM DRAIN EASEMENT PREVIOUSLY DEDICATED TO F.M.F.C.D. PER DOCUMENT NO. 2004-XXXX, O.R.F.C.
 - L.E. LANDSCAPE EASEMENT NOW OFFERED FOR DEDICATION FOR PUBLIC USE
 - (R) RADIAL BEARING
 - O.R.F.C. OFFICIAL RECORDS FRESNO COUNTY
 - F.C.R. FRESNO COUNTY RECORDS
 - C.R. CORNER RECORD ON FILE WITH FRESNO COUNTY SURVEYOR'S OFFICE
 - ▬ SHADED BORDER INDICATES LIMITS OF SUBDIVISION
 - ▲▲▲▲▲ RELINQUISHMENT OF DIRECT ACCESS RIGHTS
 - * INDICATES AREA NOW OFFERED FOR DEDICATION FOR PUBLIC STREET AND UTILITY PURPOSES
 - () RECORD DATA PER PARCEL MAP NO. 78-78 RECORDED IN BOOK 30 OF PARCEL MAPS, AT PG. 54, F.C.R.
 - [] RECORD DATA PER LOT LINE ADJUSTMENT NO. 2003-42 RECORDED AS INSTRUMENT NO. 2003-0302826.

NOTES:

- SET 3/4" BY 30" IRON PIPE, 6" BELOW SURFACE, TAGGED LS 6919, AT ALL LOT CORNERS, BEGINNING AND ENDING OF CURVES, AND ANGLE POINTS OF RIGHT OF WAY

BASIS OF BEARINGS

THE WEST LINE OF THE SOUTHWEST QUARTER OF SECTION 22-13/21 BEING NORTH 00°01'20" WEST PER PARCEL MAP NO. 78-78 AS FILED IN BOOK 30 OF PARCEL MAPS, AT PAGE 54, FRESNO COUNTY RECORDS.

CURVE TABLE			
CURVE	DELTA	RADIUS	LENGTH
C1	09°13'20"	45.00	7.24
C2	30°33'55"	45.00	24.01
C3	37°13'28"	50.00	32.48
C4	45°50'16"	50.00	40.00
C5	46°43'32"	50.00	40.78
C6	46°43'49"	50.00	40.78
C7	46°18'08"	50.00	40.41
C8	36°45'19"	50.00	32.07
C9	259°34'32"	50.00	226.52
C10	24°57'24"	45.00	19.60
C11	14°49'52"	45.00	11.65
C12	18°29'30"	45.00	14.52
C13	21°17'46"	45.00	16.73
C14	60°22'11"	50.00	52.68
C15	47°25'45"	50.00	41.39
C16	45°50'49"	50.00	40.01
C17	45°49'59"	50.00	40.00
C18	60°05'47"	50.00	52.44
C19	22°47'52"	45.00	17.91
C20	16°59'24"	45.00	13.34
C21	259°34'31"	50.00	226.52
C22	16°59'57"	45.00	13.35
C23	22°47'19"	45.00	17.90
C24	60°06'20"	50.00	52.45
C25	47°41'08"	50.00	41.61
C26	45°50'50"	50.00	40.01
C27	45°49'55"	50.00	40.00
C28	60°06'20"	50.00	52.45
C29	22°47'19"	45.00	17.90
C30	16°59'57"	45.00	13.35
C31	259°34'32"	50.00	226.52
C32	28°21'28"	50.00	24.75
C33	36°42'09"	50.00	32.03
C34	46°28'11"	50.00	40.55
C35	45°50'12"	50.00	40.00
C36	18°02'44"	50.00	15.75
C37	28°21'28"	50.00	24.75
C38	147°03'17"	50.00	128.33
C39	39°47'16"	45.00	31.25
C40	39°47'15"	45.00	31.25

RADIAL TABLE	
LINE	BEARING
R1	N09°28'58"W
R2	N40°02'53"W
R3	N02°49'25"E
R4	N43°00'51"E
R5	N43°31'48"W
R6	N02°46'20"E
R7	N39°31'39"E
R8	N14°34'15"E
R9	N61°39'53"W
R10	N79°42'37"W
R11	N54°27'11"E
R12	N07°59'00"E
R13	N28°43'09"W
R14	N71°08'48"E
R15	N49°51'02"E
R16	N69°46'46"W
R17	N22°21'01"W
R18	N23°29'48"E
R19	N69°19'47"E
R20	N50°34'26"W
R21	N73°22'18"E
R22	N70°02'38"W
R23	N22°21'30"W
R24	N23°29'19"E
R25	N69°19'14"E
R26	N73°21'45"W
R27	N72°38'22"E
R28	N50°34'26"W

LINE TABLE		
LINE	LENGTH	BEARING
L1	1.31	N89°44'23"E
L2	19.97	N89°44'23"E
L3	27.63	N89°38'18"E
L4	12.18	N45°01'20"W
L5	8.97	N44°58'40"E
L6	12.18	N44°58'40"E
L7	8.97	N45°01'20"W
L8	9.51	N12°09'33"W
L9	29.90	N00°01'20"W
L10	19.20	N45°11'31"W
L11	9.50	N78°12'36"W
L12	10.53	N89°38'18"E
L13	21.45	N00°01'20"W
L14	9.03	N45°08'29"W
L15	9.07	N44°51'31"E
L16	9.02	N45°11'31"W
L17	9.05	N44°38'18"E
L18	9.05	N45°21'42"W
L19	9.05	N44°38'18"E
L20	9.05	N45°21'42"W
L21	10.25	N89°38'18"E
L22	14.18	N44°48'29"E
L23	20.80	N00°01'20"W
L24	24.55	N00°15'37"W

TRACT NO. 1743
 PLAT VOL. 19, PG
 84, F.C.R.

PARCEL MAP
 NO. 78-78
 PARCEL MAPS
 BK. 30, PG 54,
 F.C.R.

30' PREVIOUSLY DEEDED FOR PUBLIC STREET PURPOSES PER BOOK 198 AT PAGE 264, F.C.R.

WEST 1/4 COR. SEC. 22-13/21
 FD. 3/4" I.P. 6" DP, SET TAG
 LS 6919, C.R. 3608

WEST LINE OF SECTION 22-13/21

SW CORNER SEC. 22-13/21
 FD. 3/4" I.P. 6" DP, SET TAG
 LS 6919, C.R. 4154

CENTER 1/4 COR. SEC. 22-13/21
 FD. 3/4" IRON PIPE 9" DEEP
 NO TAG TIES

CENTER 1/16 COR. SEC. 22-13/21
 MONUMENT NOT FOUND OR SET

