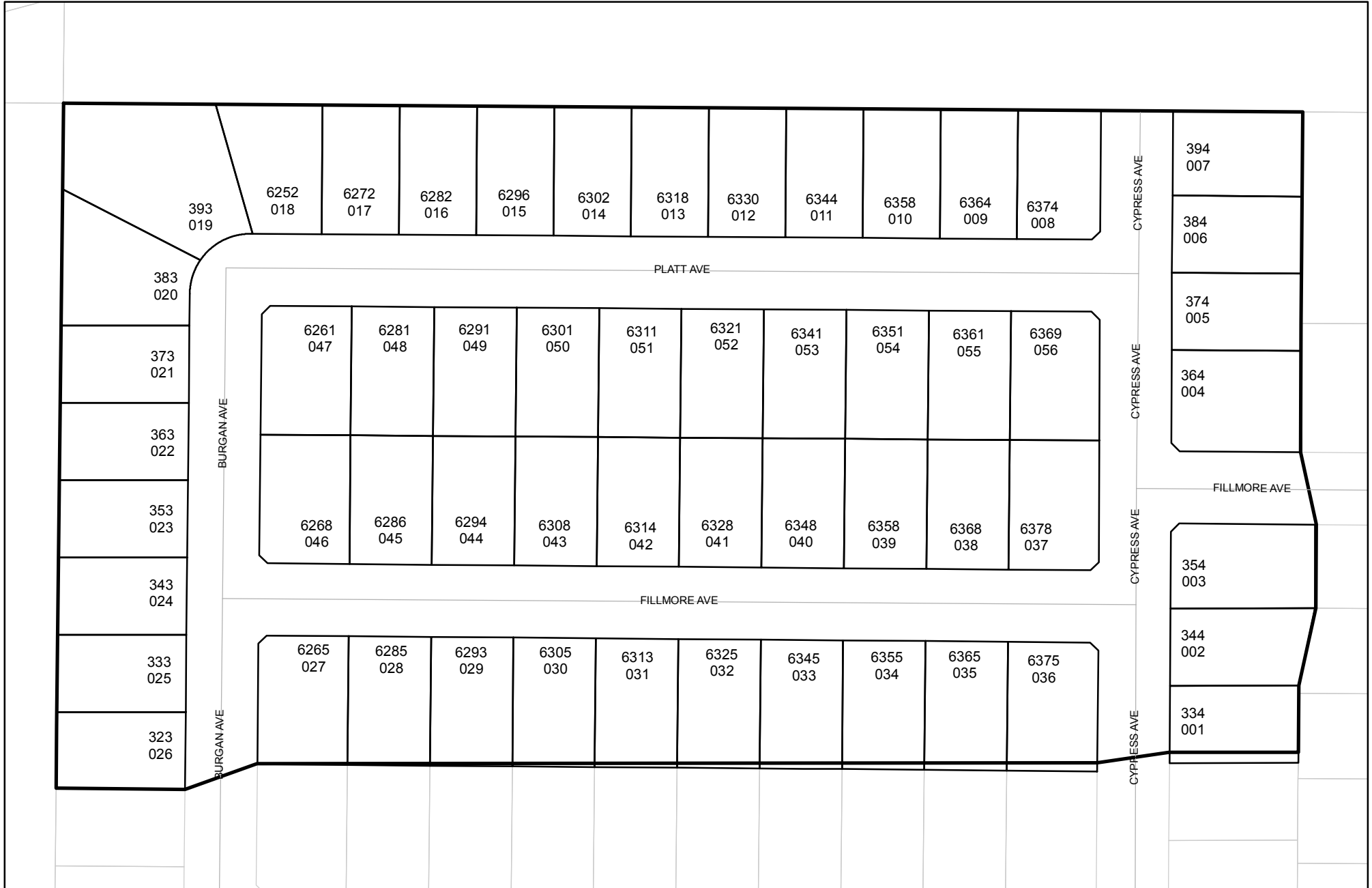




Prepared on Fri Jul 28 23:38:22 2017

# Street Names, Addresses and (Lot Numbers) for T5170

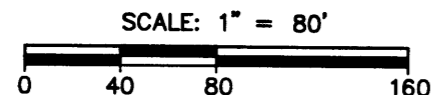


**BASIS OF BEARINGS**

THE SOUTH LINE OF LOTS 36 THRU 54 OF TRACT No. 4677 RECORDED IN VOLUME 59 OF PLATS AT PAGES 76 & 77, F.C.R., TAKEN TO BE NORTH 89°49'00" EAST

**NOTE**

SET 3/4" IRON PIPE, DOWN 0.5', TAGGED "RCE 30501" AT ALL LOT CORNERS, UNLESS OTHERWISE NOTED



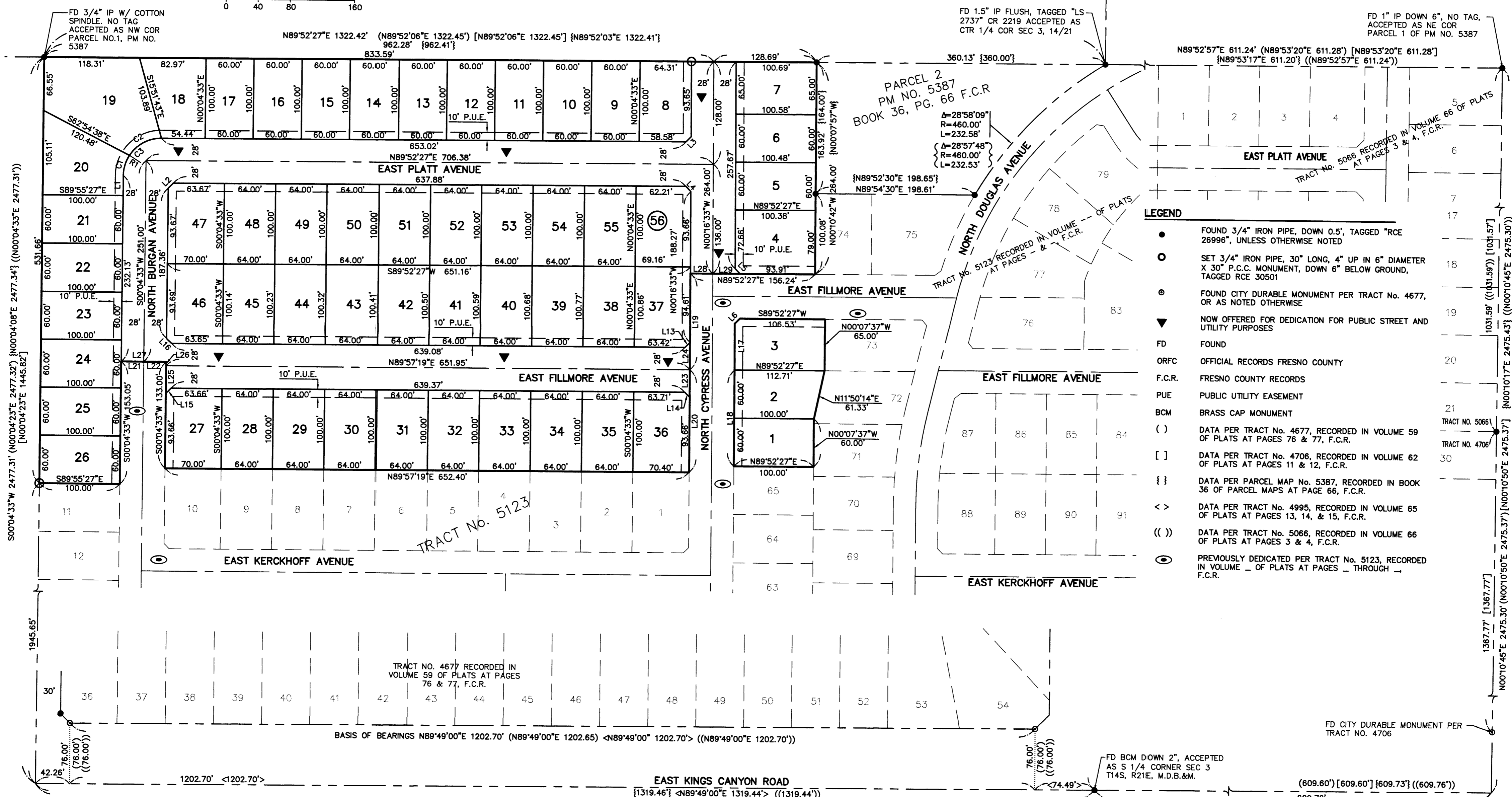
LINE TABLE			LINE TABLE		
LINE	LENGTH	BEARING	LINE	LENGTH	BEARING
L1	25.18	N00°04'33"E	L19	120.96	N00°16'33"W
L2	8.97	N44°58'30"E	L20	128.00	N00°07'37"W
L3	8.97	N44°47'57"E	L21	28.00	N89°57'19"E
L4	8.97	S45°12'03"E	L22	28.00	N89°57'19"E
L5	8.97	S45°12'03"E	L23	34.34	N00°07'37"W
L6	8.97	N44°47'57"E	L24	34.35	N00°16'33"W
L13	8.97	N44°50'23"E	L25	34.34	N00°04'33"E
L14	8.97	S45°05'09"E	L26	5.00	N00°04'33"E
L15	8.97	N45°00'56"E	L27	56.00	N89°57'19"E
L16	8.97	N44°59'04"W	L28	28.00	N89°52'27"E
L17	58.65	S00°16'33"E	L29	34.34	N89°52'27"E
L18	120.00	N00°07'37"W			

CURVE TABLE			
CURVE	DELTA	RADIUS	LENGTH
C1	32°26'21"	47.00	26.61
C2	57°21'33"	47.00	47.05
C3	89°47'54"	47.00	73.66

RADIAL TABLE	
RADIAL	BEARING
R1	S57°29'06"E

# TRACT No. 5170

PHASE VI OF TENTATIVE TRACT MAP NO. 4677  
IN THE CITY OF FRESNO  
FRESNO COUNTY, CALIFORNIA  
SURVEYED AND PLATTED IN MARCH 2003  
BY YAMABE & HORN ENGINEERING, INC.  
CONSISTING OF 2 SHEETS  
SHEET 2 OF 2



- LEGEND**
- FOUND 3/4" IRON PIPE, DOWN 0.5', TAGGED "RCE 26996", UNLESS OTHERWISE NOTED
  - SET 3/4" IRON PIPE, 30" LONG, 4" UP IN 6" DIAMETER X 30" P.C.C. MONUMENT, DOWN 6" BELOW GROUND, TAGGED RCE 30501
  - ⊙ FOUND CITY DURABLE MONUMENT PER TRACT No. 4677, OR AS NOTED OTHERWISE
  - ▼ NOW OFFERED FOR DEDICATION FOR PUBLIC STREET AND UTILITY PURPOSES
  - FD FOUND
  - ORFC OFFICIAL RECORDS FRESNO COUNTY
  - F.C.R. FRESNO COUNTY RECORDS
  - PUE PUBLIC UTILITY EASEMENT
  - BCM BRASS CAP MONUMENT
  - ( ) DATA PER TRACT No. 4677, RECORDED IN VOLUME 59 OF PLATS AT PAGES 76 & 77, F.C.R.
  - [ ] DATA PER TRACT No. 4706, RECORDED IN VOLUME 62 OF PLATS AT PAGES 11 & 12, F.C.R.
  - { } DATA PER PARCEL MAP No. 5387, RECORDED IN BOOK 36 OF PARCEL MAPS AT PAGE 66, F.C.R.
  - < > DATA PER TRACT No. 4995, RECORDED IN VOLUME 65 OF PLATS AT PAGES 13, 14, & 15, F.C.R.
  - (( )) DATA PER TRACT No. 5066, RECORDED IN VOLUME 66 OF PLATS AT PAGES 3 & 4, F.C.R.
  - ⊙ PREVIOUSLY DEDICATED PER TRACT No. 5123, RECORDED IN VOLUME - OF PLATS AT PAGES - THROUGH - F.C.R.