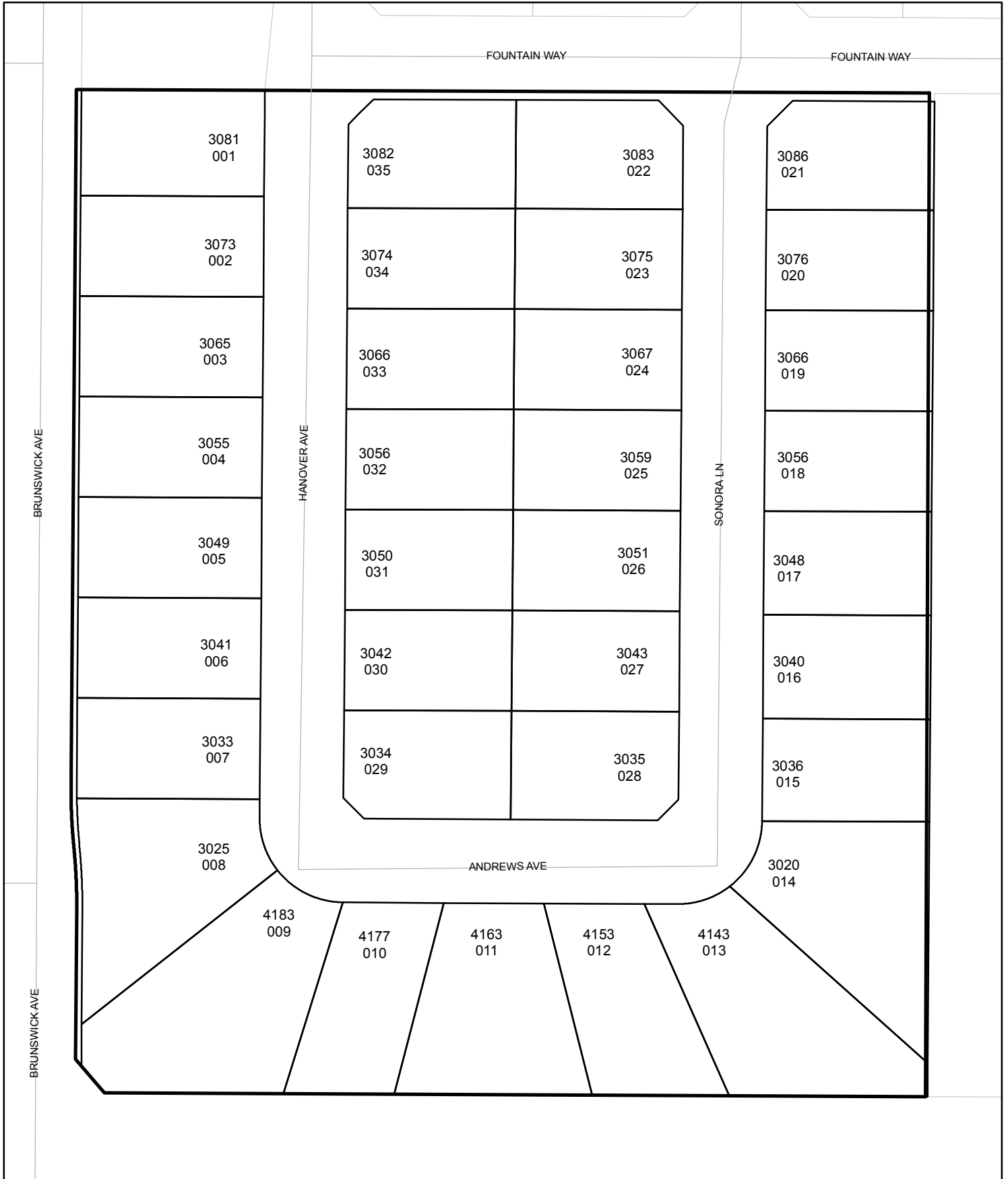




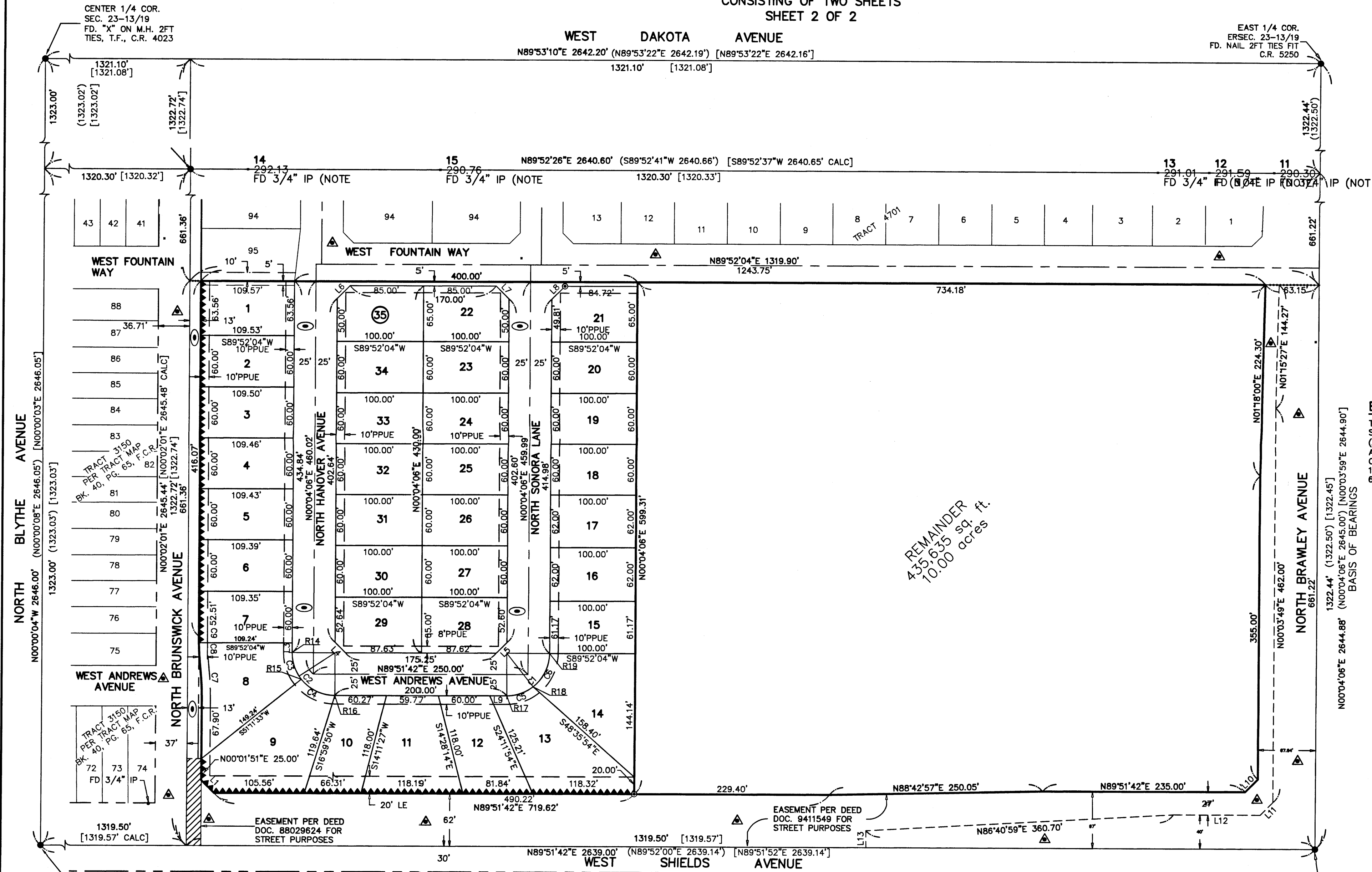
# Street Names, Addresses and (Lot Numbers) for T5148

Prepared on Fri Apr 06 22:40:59 2018



# FINAL MAP OF TRACT NO. 5148

IN THE CITY OF FRESNO  
FRESNO COUNTY, CALIFORNIA  
CONSISTING OF TWO SHEETS  
SHEET 2 OF 2



### LEGEND

- ( ) RECORD DATA PER TRACT NO. 4074, MONTE VISTA NO. 19, RECORDED IN VOLUME 48 OF PLATS AT PAGES 61 & 62, F.C.R.
- [ ] RECORD DATA PER TRACT NO. 3150, TREND HOMES NO. 11, RECORDED IN VOLUME 40 OF PLATS AT PAGE 65, F.C.R.
- SET 3/4" X 30" I.P. DOWN 6", TAGGED "R.C.E. 30501" AT ALL LOT CORNERS, UNLESS OTHERWISE NOTED.
- SET 3/4" IRON PIPE, 30" LONG, UP IN 6" DIAMETER X 30" P.C.C. MONUMENT, DOWN 6" BELOW GROUND, TAGGED "R.C.E. 30501"
- FD. 3/4" I.P. DOWN 6" TAGGED "R.C.E. 30501", UNLESS OTHERWISE NOTED.
- FD. FOUND
- T.F. TIES ON FILE
- C.R. DENOTES CORNER RECORDS, ON FILE WITH FRESNO COUNTY SURVEYOR.
- I.P. IRON PIPE
- L.E. LANDSCAPE EASEMENT NOW OFFERED FOR DEDICATION FOR PUBLIC USE.
- PPUE PLANTING & PUBLIC UTILITY EASEMENT NOW OFFERED FOR DEDICATION FOR PUBLIC USE.
- ▲ INDICATES PORTIONS PREVIOUSLY DEDICATED FOR PUBLIC STREET PURPOSES.
- PUBLIC STREET NOW OFFERED FOR DEDICATION FOR PUBLIC USE
- ▲▲▲▲ INDICATES RELINQUISHMENT OF DIRECT VEHICULAR ACCESS RIGHTS.
- BLUE BORDER INDICATES LIMITS OF SUBDIVISION

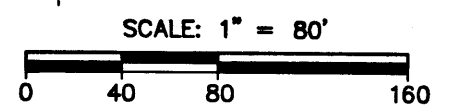
### BASIS OF BEARING

THE EAST LINE OF THE SOUTHEAST QUARTER OF SECTION 23, TOWNSHIP 13 SOUTH, RANGE 19 EAST (ALSO BEING THE CENTERLINE OF NORTH BRAWLEY AVENUE) IS TAKEN TO BE N0°04'06"E AS SHOWN ON THE MAP OF TRACT NO. 4074, MONTE VISTA NO. 19, RECORDED IN VOLUME 48 OF PLATS AT PAGES 61 AND 62, FRESNO COUNTY RECORDS.

LINE	LENGTH	BEARING
L1	21.18	S45°03'13"E
L2	3.99	N89°51'42"E
L3	11.28	N00°04'06"E
L4	17.47	N45°02'06"W
L5	17.54	N44°56'40"E
L6	21.25	N44°58'05"E
L7	21.18	N45°01'18"W
L8	21.58	N45°08'50"E
L9	19.96	N89°51'42"E
L10	21.25	N44°57'46"E
L11	21.25	S44°57'46"W
L12	100.00	S89°51'42"W
L13	20.00	S00°08'18"E

CURVE	DELTA	RADIUS	LENGTH
C1	89°47'36"	50.00'	78.36
C2	90°12'24"	50.00'	78.72
C3	38°38'26"	50.00'	33.72
C4	51°33'58"	50.00'	45.00
C5	38°12'07"	50.00'	33.34
C6	51°35'29"	50.00'	45.02
C7	6°03'31"	364.00'	39.55
C8	4°50'07"	340.00'	29.54
C9	1°13'34"	340.00'	7.49

RADIAL	BEARING
R14	N89°55'54"W
R15	S51°25'40"W
R16	N00°08'18"W
R17	S00°08'18"E
R18	S38°20'25"E
R19	N89°55'54"W



REMAINDER  
435,635 sq. ft.  
10.00 acres

PREPARED FOR:  
OWNER/SUBDIVIDER  
**LENNAR HOMES, INC.**  
7485 N. PALM, SUITE 101  
FRESNO, CA 93711  
PH. 559-447-3400 FAX 559-447-3404

SOUTHEAST COR.  
SEC. 23-13/19  
FD. 3/4" I.P. TAGGED "L.S.  
4328", T.F., C.R. 6268

PREPARED BY:  
**YAMABE & HORN ENGINEERING, INC.**  
1300 EAST SHAW AVENUE, SUITE 176  
FRESNO, CA 93710  
PH. 559-244-3123 FAX 559-244-3120