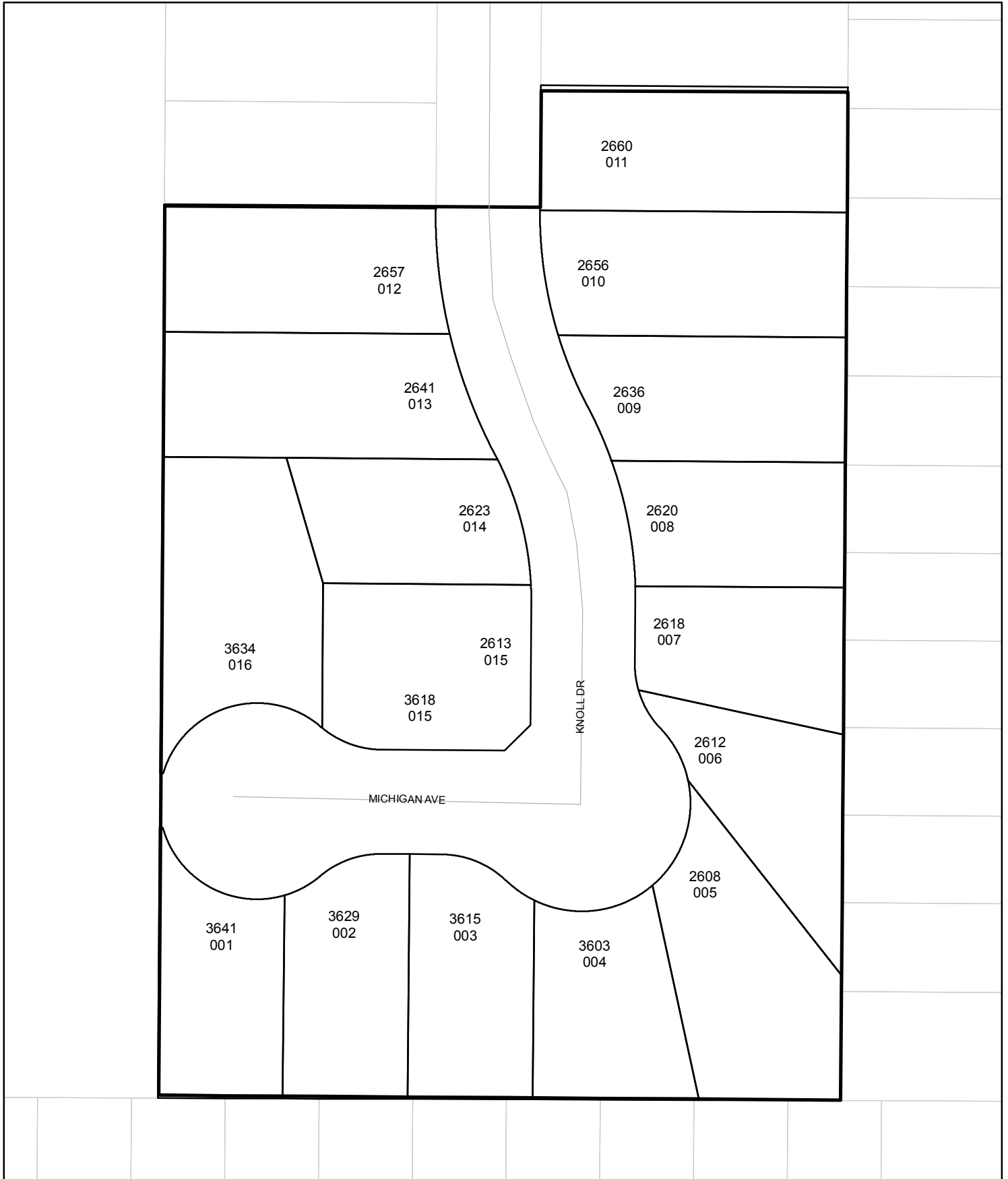




Street Names, Addresses and (Lot Numbers) for T5145

Prepared on Tue Feb 12 22:07:44 2019



MAP OF
TRACT NO. 5145
 IN THE CITY OF FRESNO, COUNTY OF FRESNO, STATE OF CALIFORNIA
 SHEET TWO OF TWO SHEETS

LINE TABLE

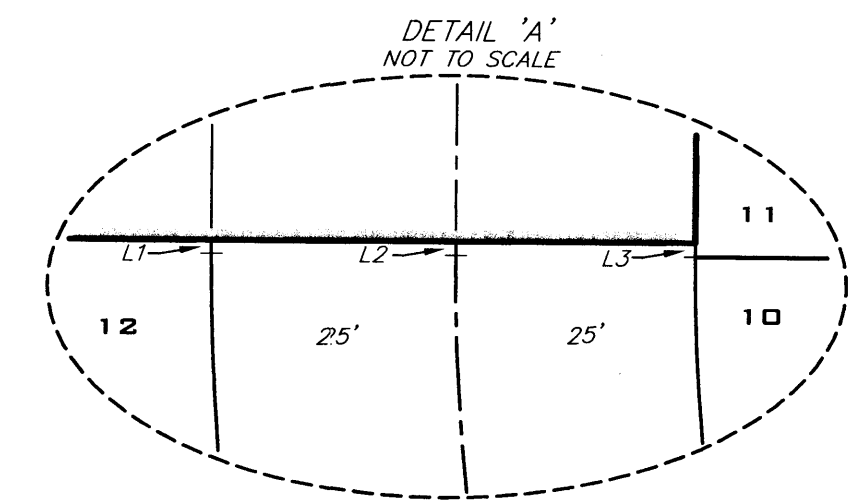
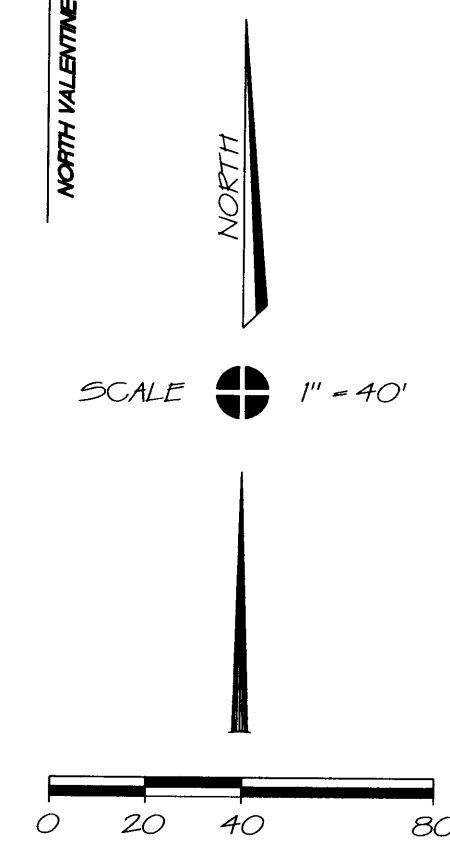
LINE	BEARING	LENGTH
L1	N00°03'01"W	0.36'
L2	S00°00'05"W	0.38'
L3	S00°03'01"E	0.40'
L4	S44°54'10"W	17.46'
L5	S89°52'03"W	1.40'
L6	S89°52'03"W	1.45'
L7	N89°52'03"E	13.65'
L8	N89°52'03"E	15.41'
L9	S89°52'03"W	29.05'

CURVE TABLE

CURVE	LENGTH	RADIUS	DELTA	CHORD
C1	60.36'	250.00'	13°50'04"	60.22'
C2	62.32'	250.00'	14°16'56"	62.16'
C3	2.22'	150.00'	0°50'54"	2.22'
C4	62.66'	150.00'	23°56'09"	62.21'
C5	8.69'	150.00'	3°19'16"	8.69'
C6	31.19'	45.00'	39°42'58"	30.57'
C7	0.58'	45.00'	0°44'35"	0.58'
C8	93.84'	47.00'	114°24'07"	79.01'
C9	74.15'	47.00'	90°23'41"	66.70'
C10	19.69'	47.00'	24°00'26"	19.55'
C11	31.78'	45.00'	40°27'33"	31.12'
C12	34.41'	45.00'	43°48'33"	33.58'
C13	16.39'	52.00'	18°03'18"	16.32'
C14	60.43'	52.00'	66°35'01"	57.09'
C15	55.96'	52.00'	61°39'45"	53.30'
C16	28.36'	52.00'	31°14'48"	28.01'
C17	21.59'	45.00'	27°29'14"	21.38'
C18	12.82'	45.00'	16°19'19"	12.78'
C19	8.46'	200.00'	2°25'20"	8.45'
C20	61.43'	200.00'	17°35'54"	61.19'
C21	28.22'	200.00'	8°05'04"	28.20'
C22	37.21'	200.00'	10°39'33"	37.15'
C23	60.94'	200.00'	17°27'22"	60.70'
C24	122.68'	250.00'	28°07'00"	121.46'
C25	110.41'	225.00'	28°07'00"	109.31'
C26	98.15'	200.00'	28°07'00"	97.16'
C27	98.10'	200.00'	28°06'18"	97.12'
C28	85.84'	175.00'	28°06'18"	84.98'
C29	73.58'	150.00'	28°06'18"	72.84'
C30	31.78'	45.00'	40°27'33"	31.12'
C31	93.84'	47.00'	114°24'07"	79.01'
C32	161.14'	52.00'	177°32'52"	103.98'
C33	34.41'	45.00'	43°48'33"	33.58'

RADIAL TABLE

LINE	BEARING
R1	S76°06'55"W
R2	S72°29'32"W
R3	N62°40'53"E
R4	N69°55'03"E
R5	N86°37'01"E
R6	N87°30'57"E
R7	S73°36'58"W
R8	N77°22'32"E
R9	S40°57'43"E
R10	S25°37'18"W
R11	S16°35'04"E
R12	S73°48'42"W
R13	N74°04'31"W
R14	S39°35'01"W



LEGEND

- MONUMENT FOUND AND ACCEPTED AS NOTED
- RM REFERENCE MONUMENT 3/4"X30" I.P. TAGGED PLS 4823 AT 3.00 FEET FROM TRUE LOT CORNER
- ()R-1 RECORD DATA PER TRACT NO. 4012, FILED IN VOLUME 53 OF PLATS AT PAGES 5 & 6, F.C.R.
- ()R-2 RECORD DATA PER TRACT NO. 3751, FILED IN VOLUME 44 OF PLATS AT PAGES 61 & 62, F.C.R.
- ()R-3 RECORD DATA PER TRACT NO. 4427, FILED IN VOLUME 59 OF PLATS AT PAGE 38, F.C.R.
- S.D.E. STORM DRAIN EASEMENT
- PUE 10' PUBLIC UTILITY EASEMENT NOW OFFERED FOR DEDICATION FOR PUBLIC USE
- PE 1' PEDESTRIAN EASEMENT NOW OFFERED FOR DEDICATION FOR PUBLIC USE
- △ NOW OFFERED FOR DEDICATION FOR PUBLIC STREET PURPOSES
- ▲ PREVIOUSLY DEDICATED FOR PUBLIC STREET PURPOSES PER R-3 REF. HEREON

NOTES

- 1.) SHADED BORDER INDICATES LIMITS OF THIS SUBDIVISION
- 2.) DISTANCES NOT MONUMENTED ARE CALCULATED
- 3.) SET 3/4" x 30" IRON PIPE DOWN 6" TAGGED PLS 4823 FOR ALL CORNERS, CURVE POINTS, AND CORNER CUTOFFS, EXCEPT AS NOTED.

BASIS OF BEARINGS:

THE EAST LINE OF LOT 7 OF VICTORIA COLONY, PLATS VOL. 4, PAGE 61, F.C.R., TAKEN TO BE S00°03'43"E, PER DOCUMENT NO. 2004-0035623, ORFC.

PREPARED BY:



7690 N. PALM AVE. STE. 104
 FRESNO, CA. 93710
 PH(559)449-4500 FAX(559)449-4515

