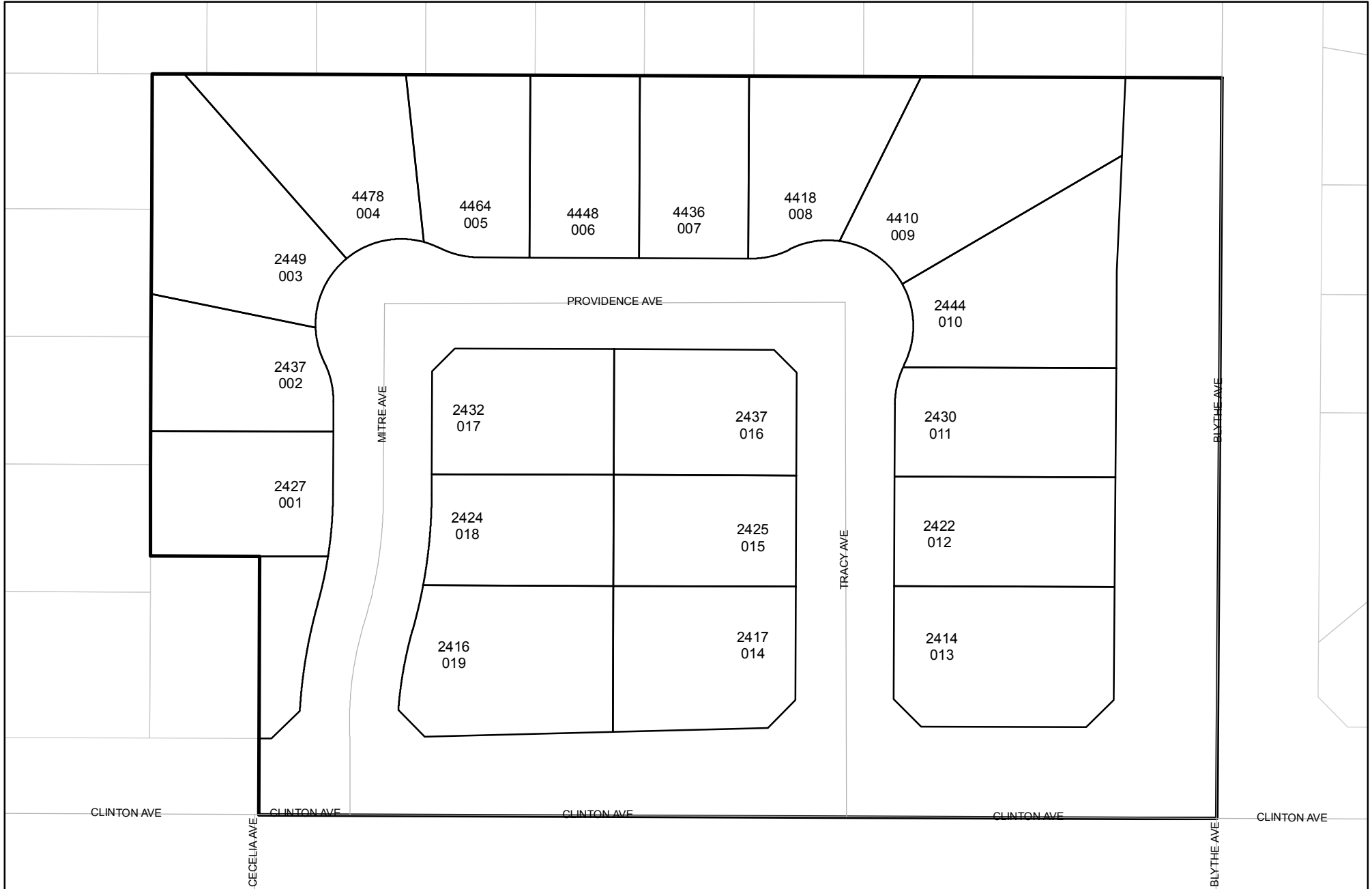




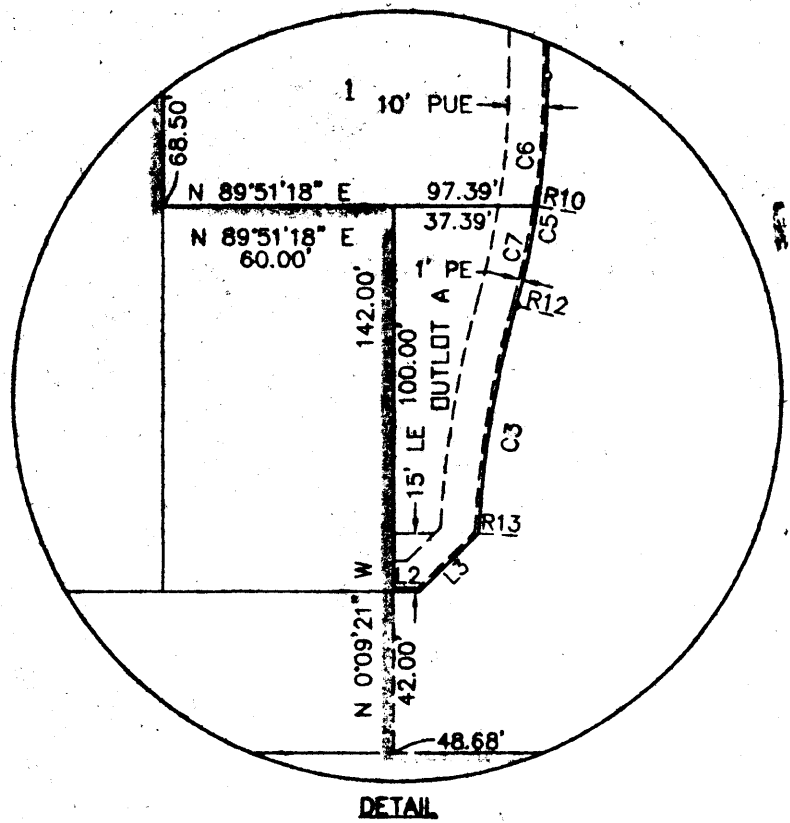
Prepared on Tue Jun 05 22:09:52 2018

# Street Names, Addresses and (Lot Numbers) for T5136



# TRACT NO. 5136

IN THE CITY OF FRESNO, COUNTY OF FRESNO, STATE OF CALIFORNIA  
 SURVEYED AND PLATTED IN APRIL 2004, BY GARY GIANNETTA  
 SHEET TWO OF TWO SHEETS



DETAIL

THE NORTH QUARTER CORNER OF SECTION 26,  
 T 13 S, R 19 E, M.D.B. & M., ESTABLISHED FROM  
 2' TIES SOUTH AND WEST. (C.R.#4220)

### BASIS OF BEARINGS

THE SOUTH LINE OF THE NORTHWEST QUARTER OF SECTION 26,  
 TOWNSHIP 13 SOUTH, RANGE 19 EAST, MOUNT DIABLO BASE  
 AND MERIDIAN, TAKEN AS BEARING N 89°51'18" E AS PER  
 TREND HOMES NO. 16, TRACT NO. 3928, RECORDED IN VOLUME  
 48, PAGE 10 OF PLATS, FRESNO COUNTY RECORDS.

### LEGEND:

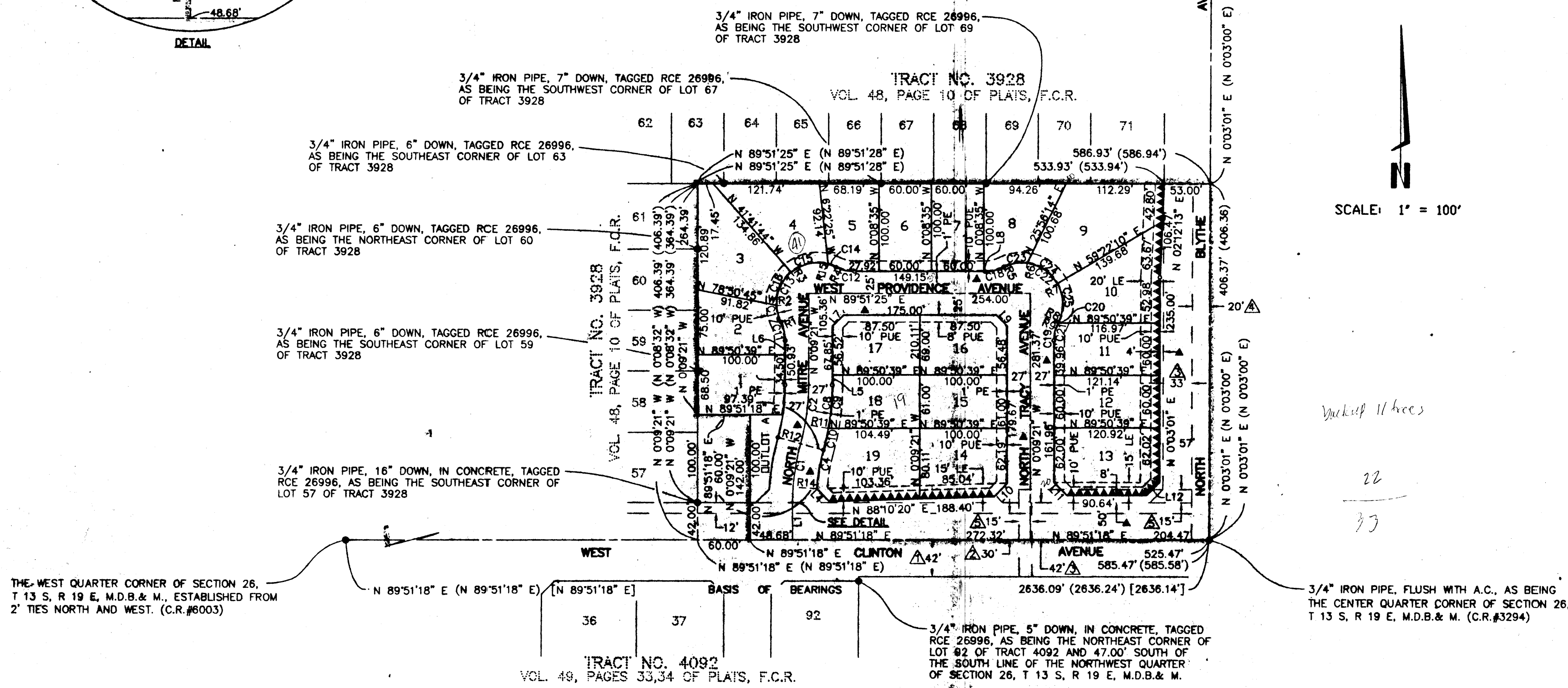
- MONUMENT FOUND AND ACCEPTED AS NOTED
- SET 3/4" IRON PIPE, 30" LONG, 6" DOWN BELOW GROUND, TAGGED R.C.E. 26996
- ⊙ SET 3/4" IRON PIPE, 30" LONG, 4" UP IN 6" DIAMETER x 30" P.C.C. MONUMENT, DOWN 6" BELOW GROUND, TAGGED R.C.E. 26996
- ▲ NOW OFFERED FOR DEDICATION FOR PUBLIC STREET PURPOSES
- ▲▲▲▲ INDICATES RELINQUISHMENT OF DIRECT ACCESS RIGHTS
- ( ) RECORD DATA AS PER TRACT NO. 3928, RECORDED IN VOLUME 48, PAGE 10 OF PLATS, FRESNO COUNTY RECORDS.
- [ ] RECORD DATA AS PER TRACT NO. 4092, RECORDED IN VOLUME 49, PAGES 33 AND 34 OF PLATS, FRESNO COUNTY RECORDS
- ⚠ PREVIOUSLY DEEDED FOR PUBLIC STREET PURPOSES AS PER DOCUMENT RECORDED MAY 4, 1988 AS DOC. NO. 88047031, F.C.R.
- ⚠ EASEMENT FOR SEWER PURPOSES, RECORDED MAY 4, 1988 AS DOC. NO. 83008701, F.C.R.
- ⚠ PREVIOUSLY DEEDED FOR PUBLIC STREET PURPOSES, RECORDED MAY 4, 1988 AS DOC. NO. 88047032, F.C.R.
- ⚠ PREVIOUSLY DEEDED FOR PUBLIC STREET PURPOSES AS PER
- ⚠ FRESNO IRRIGATION DISTRICT PIPELINE EASMENT RECORDED NOVEMBER 17, 1987 AS DOC. NO. 87138012, F.C.R.
- PE PEDESTRIAN EASEMENT NOW OFFERED FOR DEDICATION FOR PUBLIC USE
- PUE PUBLIC UTILITY EASEMENT NOW OFFERED FOR DEDICATION FOR PUBLIC USE
- LE LANDSCAPE EASEMENT NOW OFFERED FOR DEDICATION FOR PUBLIC USE
- (CALC) CALCULATED FROM RECORD DATA
- BLUE BORDER INDICATES THE LIMITS OF THIS SUBDIVISION

SCALE: 1" = 100'

*check 11 trees*

22

33



THE WEST QUARTER CORNER OF SECTION 26,  
 T 13 S, R 19 E, M.D.B. & M., ESTABLISHED FROM  
 2' TIES NORTH AND WEST. (C.R.#6003)

N 89°51'18" E (N 89°51'18" E) [N 89°51'18" E]  
 BASIS OF BEARINGS

3/4" IRON PIPE, 5" DOWN, IN CONCRETE, TAGGED  
 RCE 26996, AS BEING THE NORTHEAST CORNER OF  
 LOT 92 OF TRACT 4092 AND 47.00' SOUTH OF  
 THE SOUTH LINE OF THE NORTHWEST QUARTER  
 OF SECTION 26, T 13 S, R 19 E, M.D.B. & M.

3/4" IRON PIPE, FLUSH WITH A.C., AS BEING  
 THE CENTER QUARTER CORNER OF SECTION 26,  
 T 13 S, R 19 E, M.D.B. & M. (C.R.#3294)

RADIAL	DIRECTION
R1	S 63°19'08" W
R2	S 87°34'17" W
R3	N 40°00'33" W
R4	N 26°22'56" E
R5	N 26°40'07" W
R6	N 07°36'59" E
R7	N 60°02'09" E
R8	S 63°37'50" E
R9	N 65°28'37" W
R10	S 81°22'52" E
R11	S 78°49'34" E
R12	S 74°36'09" E
R13	N 87°02'31" W
R14	N 86°05'11" W
R15	N 14°50'55" E

LINE	DIRECTION	DISTANCE
L1	N 00°08'42" W	42.00'
L2	N 89°51'18" E	6.69'
L3	N 45°37'51" E	21.50'
L4	N 44°55'15" W	20.50'
L5	N 00°09'21" W	11.33'
L6	N 00°09'21" W	16.43'
L7	N 44°51'02" E	17.68'
L8	N 89°51'25" E	1.23'
L9	N 45°08'58" W	17.68'
L10	N 44°00'29" E	21.52'
L11	N 45°09'02" W	21.22'
L12	N 44°57'10" E	21.25'

CURVE	RADIUS	LENGTH	TANGENT	DELTA
C1	250.00'	67.82'	34.12'	15°32'33"
C2	250.00'	67.86'	34.14'	15°33'12"
C3	277.00'	60.14'	30.19'	12°26'22"
C4	223.00'	44.70'	22.42'	11°29'02"
C5	223.00'	60.53'	30.45'	15°33'12"
C6	223.00'	34.15'	17.11'	08°46'29"
C7	223.00'	28.38'	13.21'	06°46'43"
C8	277.00'	75.19'	37.83'	15°33'12"
C9	277.00'	49.94'	25.04'	10°19'47"
C10	277.00'	25.25'	12.64'	05°13'25"
C11	48.00'	22.22'	11.31'	26°31'51"
C12	48.00'	22.22'	11.31'	26°31'51"
C13	47.00'	117.36'	140.73'	143°03'48"
C14	47.00'	9.46'	4.75'	11°32'01"
C15	47.00'	45.00'	24.39'	54°51'28"
C16	47.00'	43.00'	23.14'	52°25'10"
C17	47.00'	19.90'	10.10'	24°15'09"
C18	48.00'	22.22'	11.31'	26°31'51"
C19	48.00'	22.22'	11.31'	26°31'51"
C20	48.00'	1.55'	0.77'	01°50'47"
C21	48.00'	20.87'	10.50'	24°40'44"
C22	47.00'	117.33'	140.62'	143°02'17"
C23	47.00'	28.12'	14.50'	34°17'06"
C24	47.00'	43.00'	23.14'	52°25'10"
C25	47.00'	46.21'	25.17'	56°20'01"