



# MAP OF TRACT NO. 5135

PHASE VI OF TENTATIVE TRACT NO. 4570

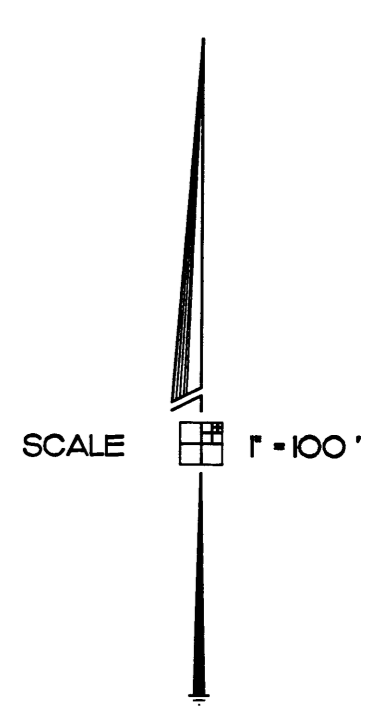
IN THE CITY OF FRESNO  
FRESNO COUNTY, CALIFORNIA  
SURVEYED AND PLATTED IN APRIL, 2003  
BY INGELS - BRAUN & ASSOCIATES

CONSISTING OF FIVE SHEETS  
SHEET 3 OF 5 SHEETS

SEE SHEET TWO FOR BASIS OF  
BEARINGS, LEGEND AND FOUND  
MONUMENT DESCRIPTIONS

SEE SHEET FIVE FOR CURVE,  
LINE AND RADIAL TABLES

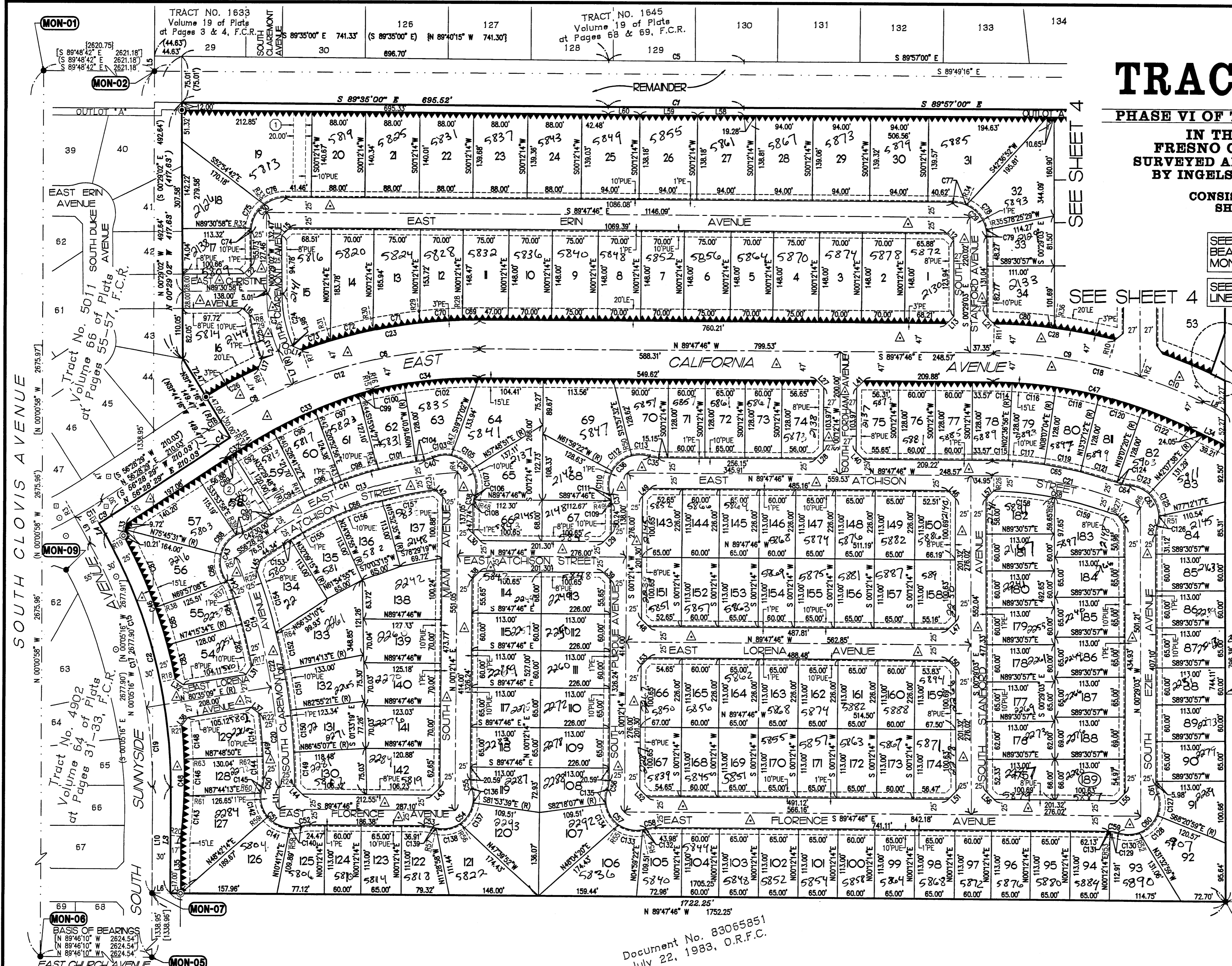
SEE DETAIL 'A'  
ON SHEET 4



OFFICIAL ADDRESS NUMBERS  
WHICH APPEARS ON THIS PAGE MUST BE INSTALLED  
BEFORE FINAL INSPECTION AS PER SECTION 12-1304  
F.M.C. MINIMUM SIZE 3" HIGH WITH 1/4" STROKES  
ISSUED BY *Paul Braun* DATE *7/26/03*

REVISIONS	
09/18/03	RE

BY: ESPINOZA -04/04/03  
IBA CADFILE: 02046FM



MON-01  
[2620.75]  
[S 89°48'42" E 2621.18']  
[S 89°48'42" E 2621.18']  
[S 89°48'42" E 2621.18']

MON-02  
[44.63]  
[S 89°35'00" E 695.52']  
[S 89°35'00" E 695.52']

MON-03  
[44.63]  
[S 89°35'00" E 695.52']  
[S 89°35'00" E 695.52']

MON-04  
[44.63]  
[S 89°35'00" E 695.52']  
[S 89°35'00" E 695.52']

MON-05  
[44.63]  
[S 89°35'00" E 695.52']  
[S 89°35'00" E 695.52']

MON-06  
[44.63]  
[S 89°35'00" E 695.52']  
[S 89°35'00" E 695.52']

MON-07  
[44.63]  
[S 89°35'00" E 695.52']  
[S 89°35'00" E 695.52']

MON-08  
[44.63]  
[S 89°35'00" E 695.52']  
[S 89°35'00" E 695.52']

MON-09  
[44.63]  
[S 89°35'00" E 695.52']  
[S 89°35'00" E 695.52']

MON-10  
[44.63]  
[S 89°35'00" E 695.52']  
[S 89°35'00" E 695.52']

TRACT NO. 1633  
Volume 19 of Plats  
at Pages 3 & 4, F.C.R.  
[44.63]  
[44.63]  
29  
SOUTH CLAREMONT AVENUE  
S 89°35'00" E 741.33' (S 89°35'00" E) N 89°40'15" W 741.30'  
126 127  
896.70'

TRACT NO. 1645  
Volume 19 of Plats  
at Pages 68 & 69, F.C.R.  
128 129 130 131 132 133 134  
S 89°57'00" E  
REMAINDER

Document No. 83065851  
July 22, 1983, O.R.F.C.

