



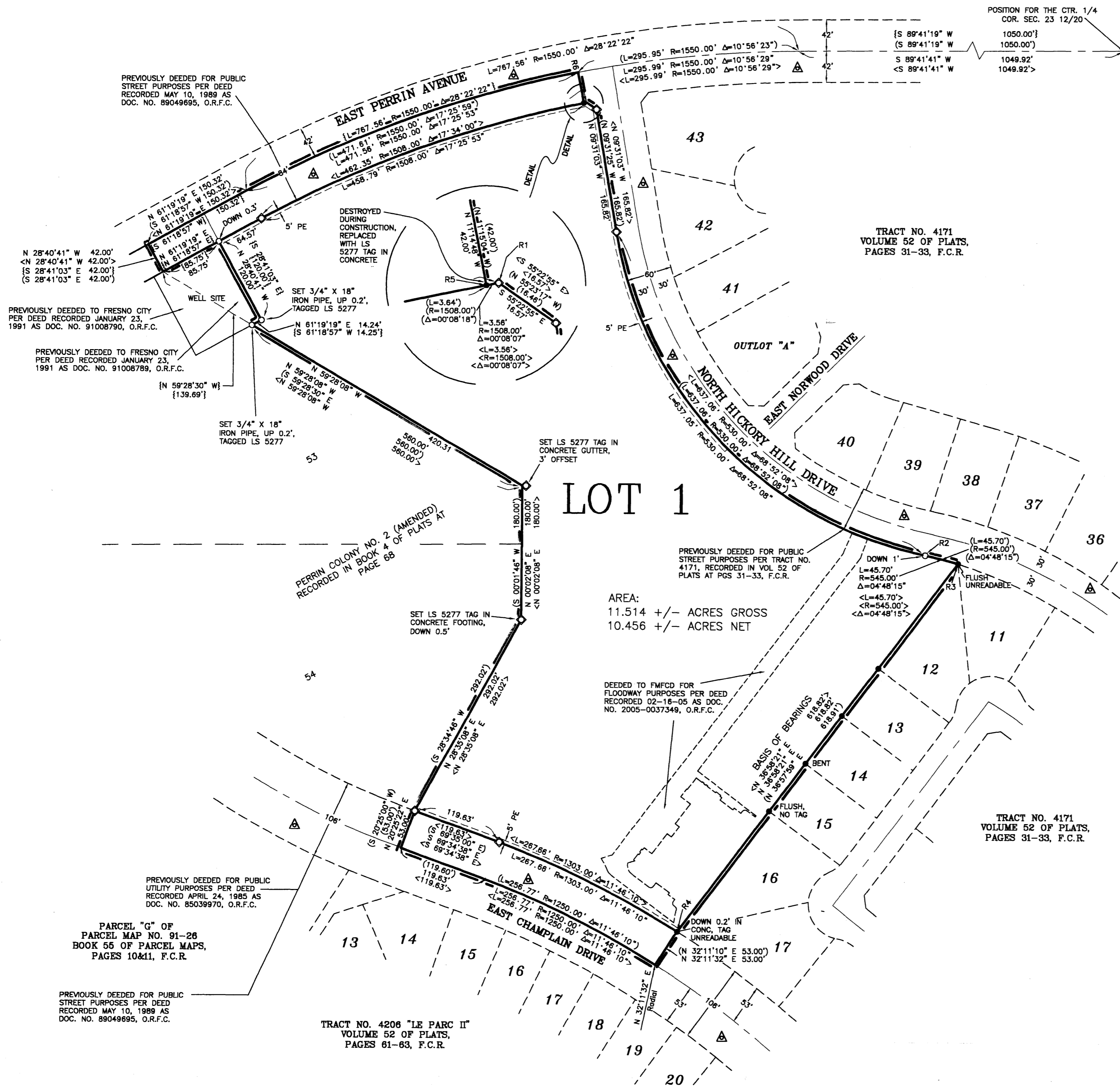
# Street Names, Addresses and (Lot Numbers) for T5129

Prepared on Mon Oct 22 15:54:34 2018



# FINAL MAP OF TRACT NO. 5129

FOR CONDOMINIUM PURPOSES, IN THE CITY OF FRESNO  
 FRESNO COUNTY CALIFORNIA  
 SURVEYED AND PLATTED IN NOVEMBER, 2004  
 BY HARBOUR AND ASSOCIATES  
 CONSISTING OF 2 SHEETS  
 SHEET 2 OF 2



**LEGEND:**

- SET 3/4" X 30" IRON PIPE, DOWN 0.5', TAGGED LS 5277, UNLESS OTHERWISE NOTED.
- ◇ SET TAG IN CONCRETE, STAMPED LS 5277, UNLESS OTHERWISE NOTED.
- FOUND AND ACCEPTED 3/4" X 30" IRON PIPE, DOWN 0.5', TAGGED LS 5277, DOWN 0.50', UNLESS OTHERWISE NOTED.
- ( ) RECORD DATA PER DEED RECORDED JANUARY 15, 1991 AS DOCUMENT NO. 91005814, O.R.F.C.
- < > TRACT NO. 4171 ACCORDING TO THE MAP THEREOF RECORDED IN VOLUME 52 OF PLATS AT PAGES 31-33, F.C.R.
- { } RECORD DATA PER DEED RECORDED JANUARY 23, 1991 AS DOCUMENT NO. 91008789, O.R.F.C.
- △ PREVIOUSLY DEDICATED FOR PUBLIC STREET AND UTILITY PURPOSES.
- PE PEDESTRIAN EASEMENT NOW OFFERED FOR DEDICATION FOR PUBLIC USE.
- F.C.R. FRESNO COUNTY RECORDS.
- O.R.F.C. OFFICIAL RECORDS FRESNO COUNTY.
- BLUE BORDER INDICATES THE LIMITS OF THIS SUBDIVISION.

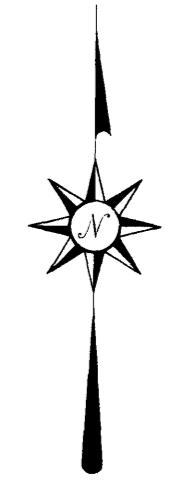
**BASIS OF BEARINGS:**

THE NORTHWESTERLY LINE OF LOTS 12 THROUGH 16 OF TRACT NO. 4171 WAS TAKEN TO BE N 36°58'21" E AS SHOWN ON THE MAP THEREOF RECORDED IN VOLUME 52 OF PLATS AT PAGES 31 THROUGH 33, FRESNO COUNTY RECORDS.

**NOTE:**

DISTANCES NOT MONUMENTED ARE CALCULATED.

RADIAL NO.	BEARING	DISTANCE
R1	N 11°06'41" W	1508.00'
R1	(N 11°06'46" W)	(1508.00')
R1	<N 11°06'41" W>	<1508.00'>
R2	S 11°36'49" W	545.00'
R2	<S 11°36'49" W>	<545.00'>
R3	N 16°25'04" E	545.00'
R3	(N 16°24'42" E)	(545.00')
R3	<N 16°25'04" E>	<545.00'>
R4	N 32°11'32" E	1303.00'
R5	N 11°14'48" W	1508.00'
R6	N 11°14'48" W	1550.00'

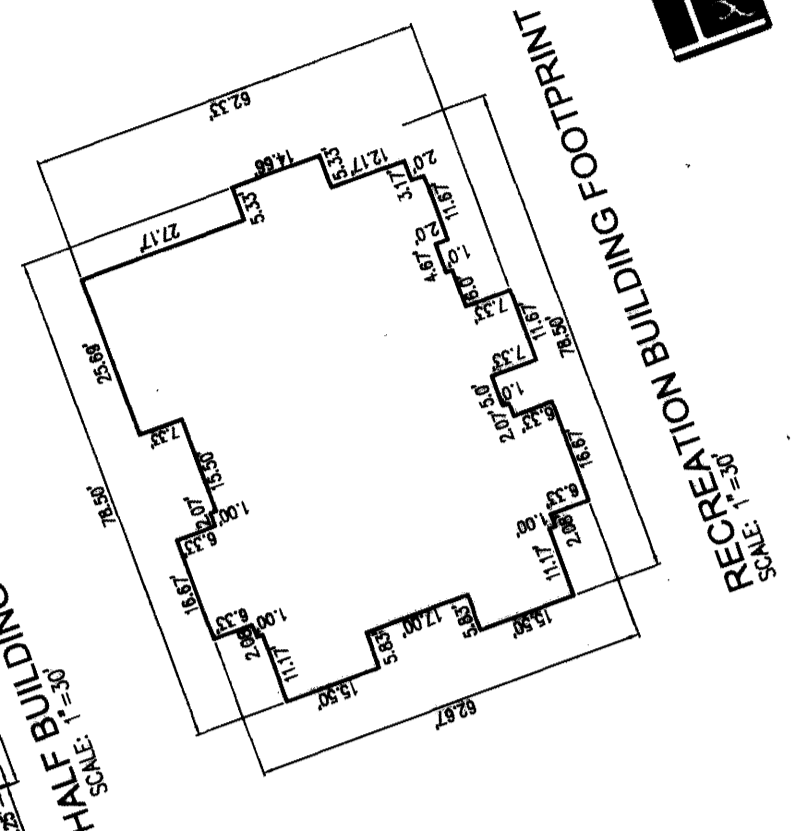
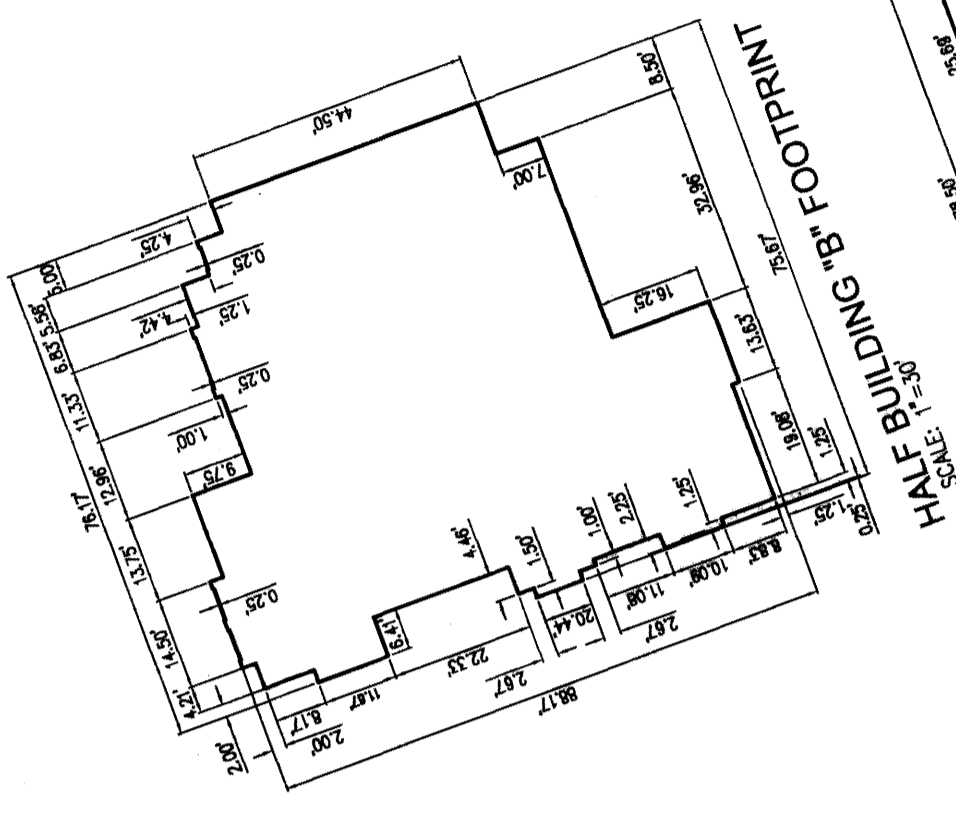
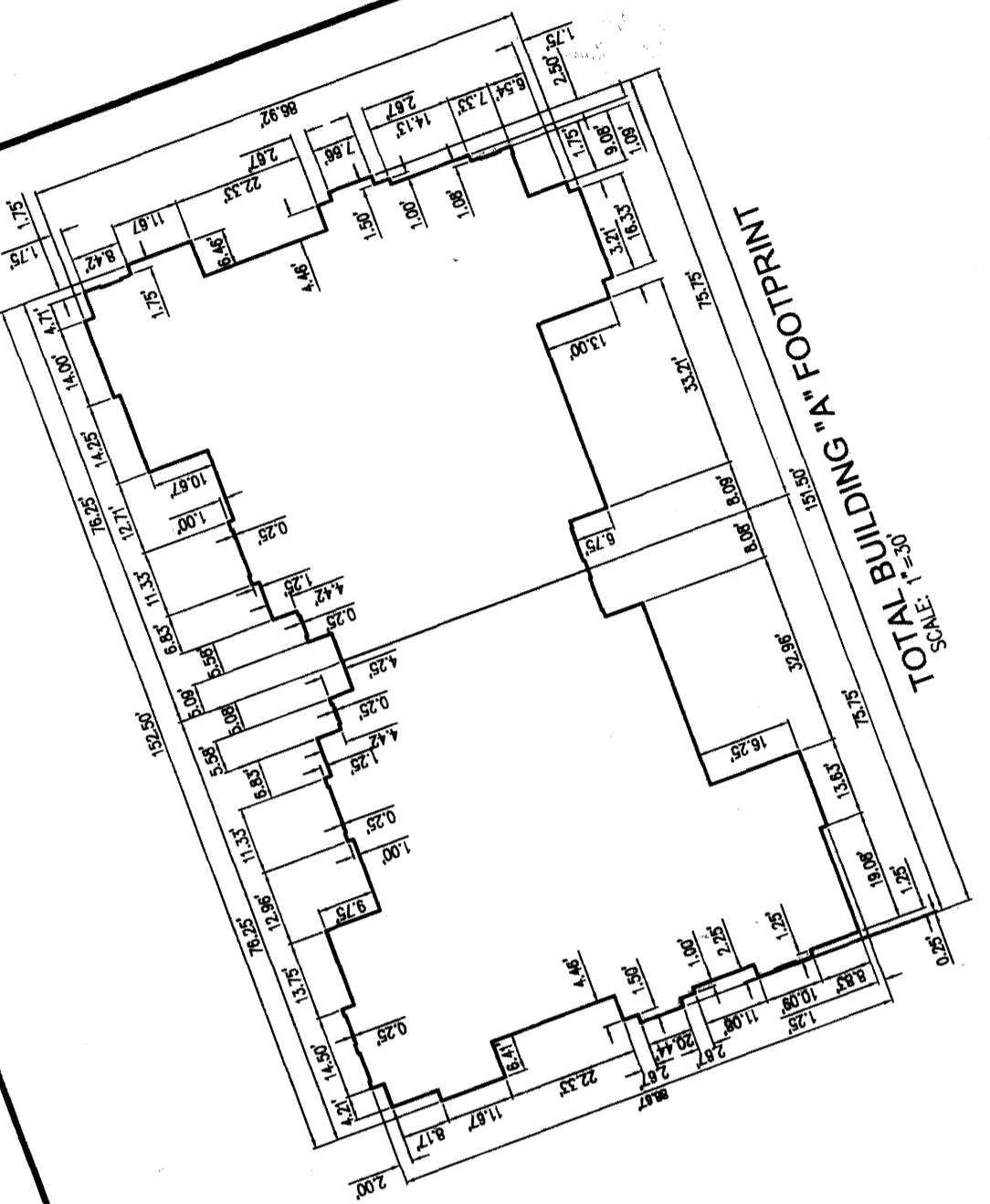


**Harbour & Associates**  
 Civil Engineers  
 375 Woodworth Avenue, Suite 103 • Clovis, California 93612  
 (559) 325 7676 • Fax (559) 325 - 7699 • e-mail ha\_ca@msn.com

REV: 04-12-06  
 REV: 03-23-06

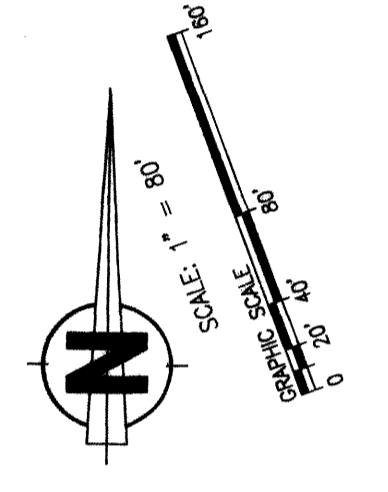
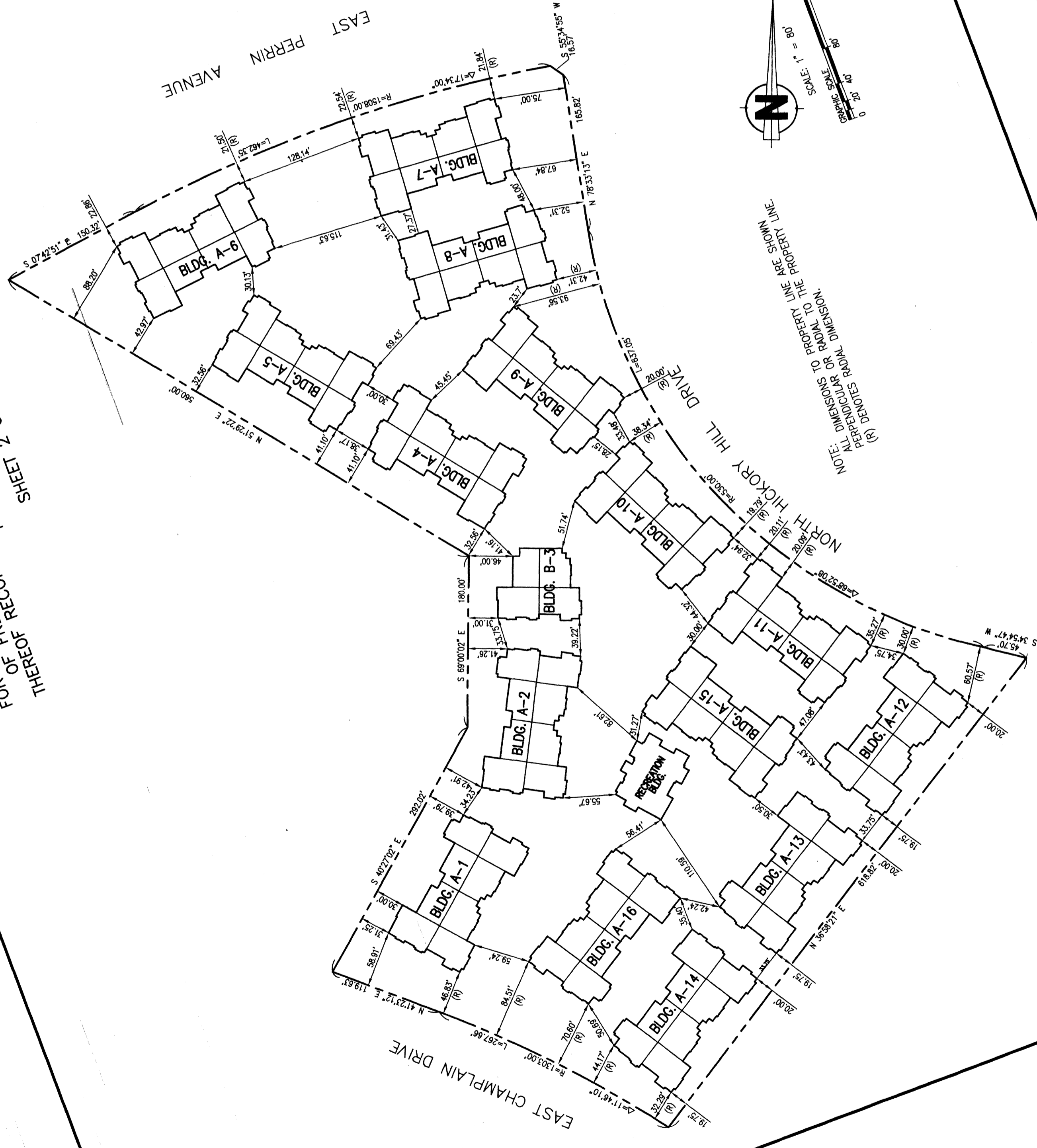
W.O.# 02-017

77



**1-199**  
 H. H. H. & ASSOCIATES  
 1500 S. G STREET, SUITE 100, FRESNO, CALIFORNIA 93702  
 TEL: (559) 435-7500 FAX: (559) 435-7501  
 WWW.HHHANDASSOCIATES.COM

**CONDOMINIUM PLAN**  
 FOR LOT 1 OF TRACT NO. 5  
 A PARCEL OF LAND IN THE CITY OF FRESNO, CALIFORNIA, AS SHOWN IN THE CITY OF FRESNO RECORDS, IN VOLUME 27 OF THE FRESNO COUNTY RECORDS.  
 SHEET 2 OF 6 SHEETS



NOTE: (A) DIMENSIONS TO PROPERTY LINE ARE SHOWN.  
 (B) DIMENSIONS TO BUILDING DIMENSION.  
 ALL DIMENSIONS TO PROPERTY LINE ARE SHOWN.

2021 William H. Miller, Architect & Planner  
 1500 S. G STREET, SUITE 100, FRESNO, CALIFORNIA 93702  
 TEL: (559) 435-7500 FAX: (559) 435-7501  
 WWW.HHHANDASSOCIATES.COM