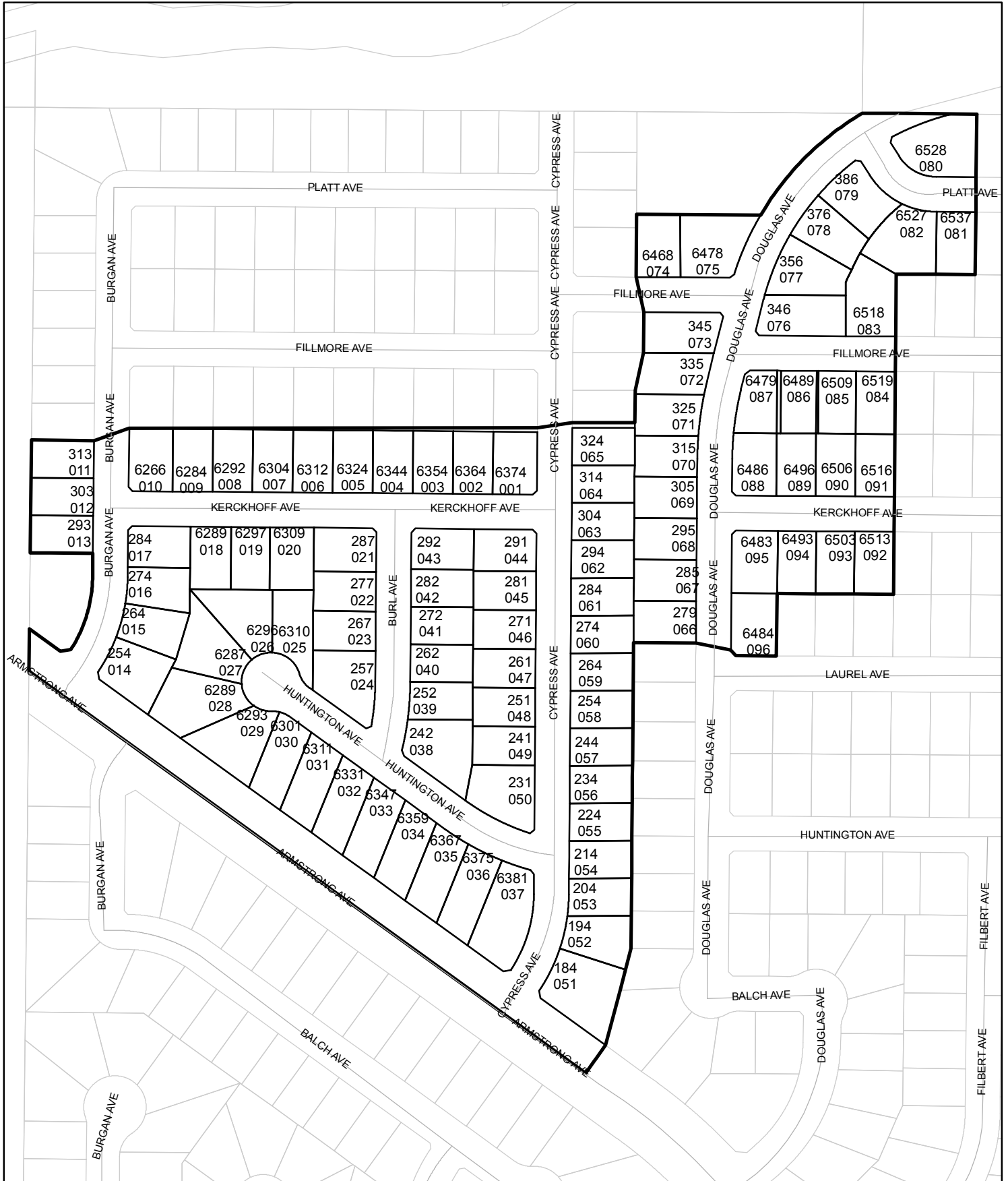




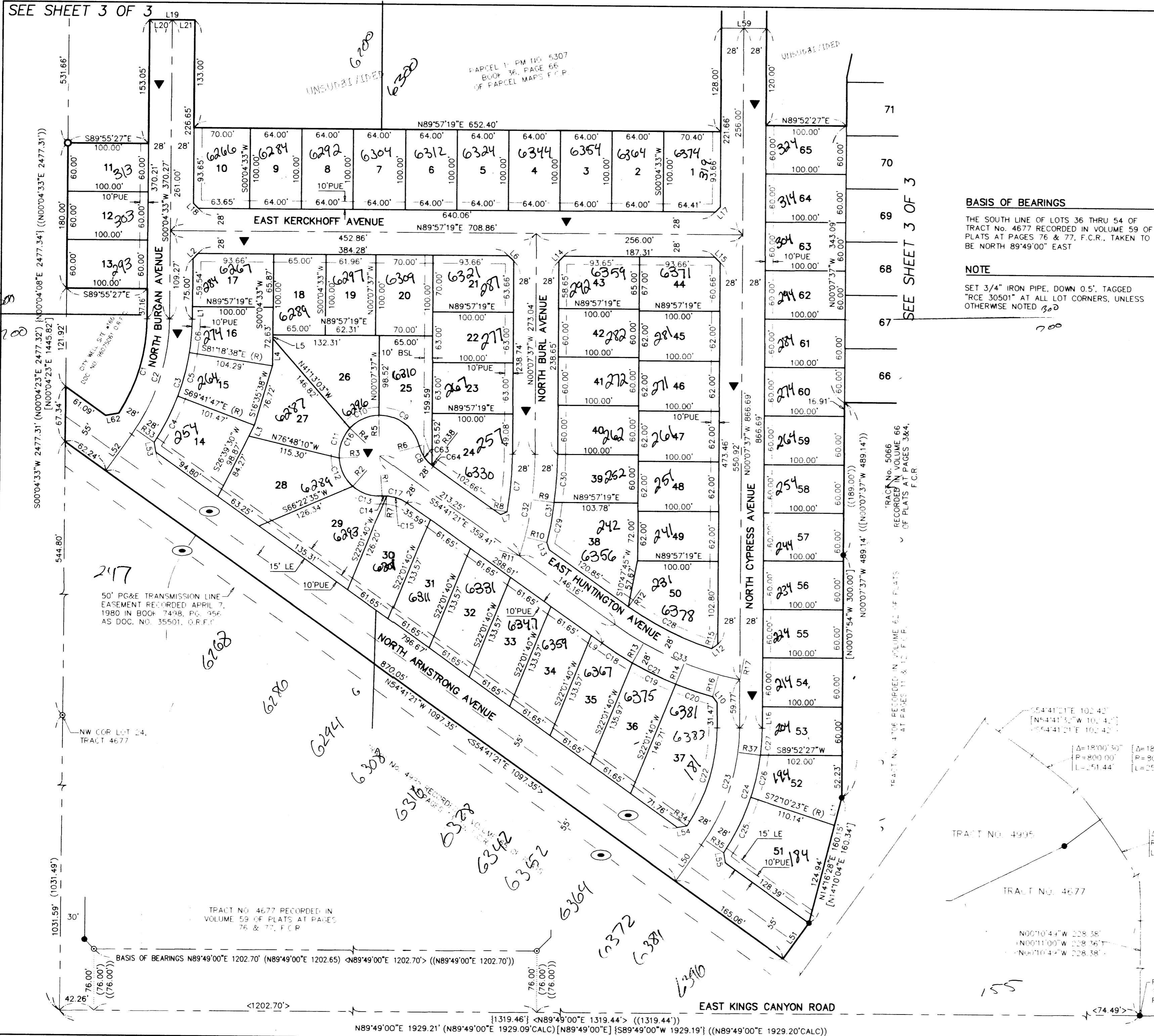
# Street Names, Addresses and (Lot Numbers) for T5123

Prepared on Fri Jul 28 23:46:20 2017



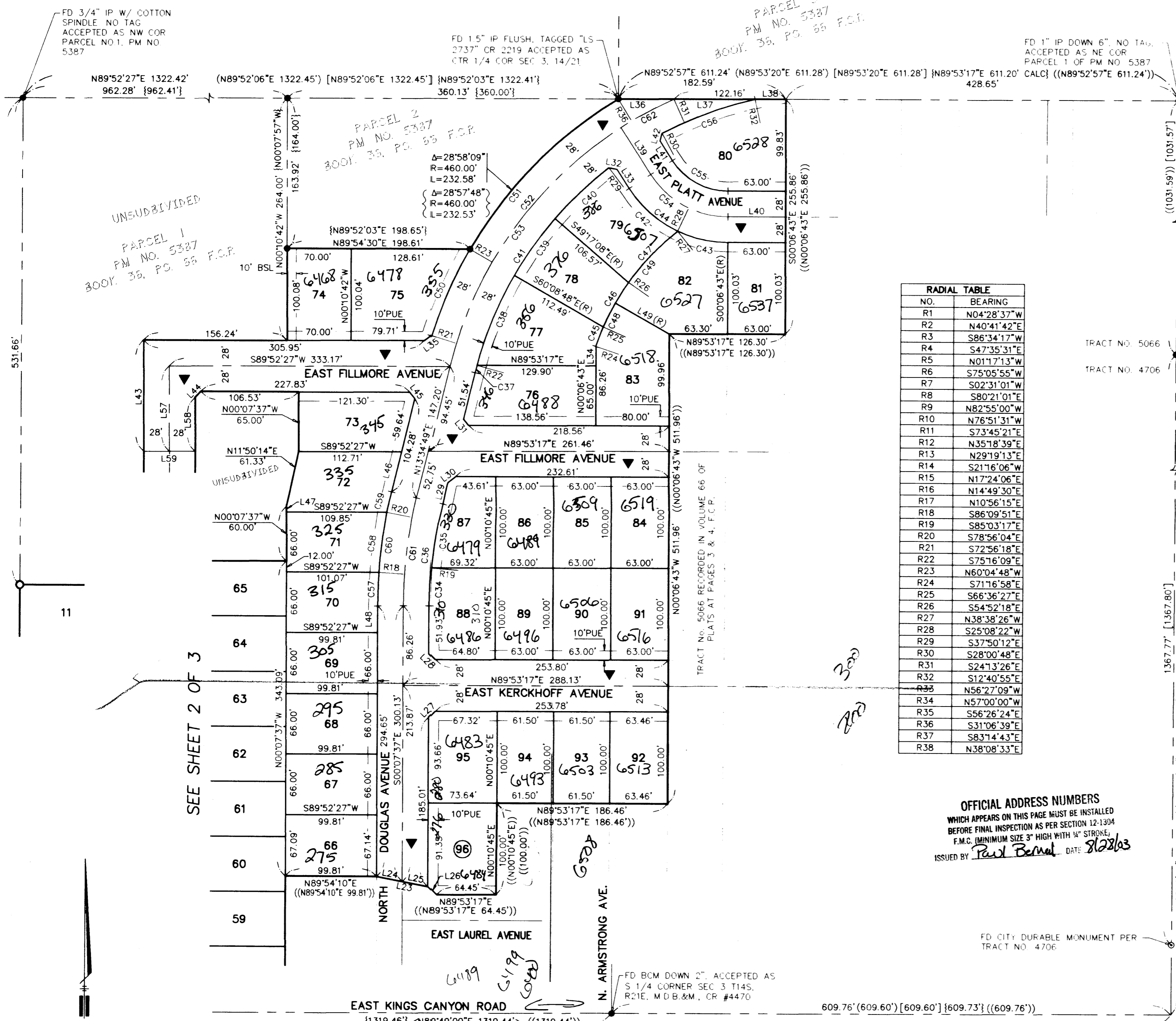
# TRACT No. 5123

PHASE V OF TENTATIVE TRACT MAP NO. 4677  
 IN THE CITY OF FRESNO  
 FRESNO COUNTY, CALIFORNIA  
 SURVEYED AND PLATTED IN JANUARY, 2003  
 BY YAMABE & HORN ENGINEERING, INC.  
 CONSISTING OF 3 SHEETS  
 SHEET 2 OF 3



# TRACT No. 5123

PHASE V OF TENTATIVE TRACT MAP NO. 4677  
IN THE CITY OF FRESNO  
FRESNO COUNTY, CALIFORNIA  
SURVEYED AND PLATTED IN JANUARY, 2003  
BY YAMABE & HORN ENGINEERING, INC.  
CONSISTING OF 3 SHEETS  
SHEET 3 OF 3



RADIAL TABLE	
NO.	BEARING
R1	N04°28'37"W
R2	N40°41'42"E
R3	S86°34'17"W
R4	S47°35'31"E
R5	N01°17'13"W
R6	S75°05'55"W
R7	S02°31'01"W
R8	S80°21'01"E
R9	N82°55'00"W
R10	N76°51'31"W
R11	S73°45'21"E
R12	N35°18'39"E
R13	N29°19'13"E
R14	S21°16'06"W
R15	N17°24'06"E
R16	N14°49'30"E
R17	N10°56'15"E
R18	S86°09'51"E
R19	S85°03'17"E
R20	S78°56'04"E
R21	S72°56'18"E
R22	S75°16'09"E
R23	N60°04'48"W
R24	S71°16'58"E
R25	S66°36'27"E
R26	S54°52'18"E
R27	N38°38'26"W
R28	S25°08'22"W
R29	S37°50'12"E
R30	S28°00'48"E
R31	S24°13'26"E
R32	S12°40'55"E
R33	N56°27'09"W
R34	N57°00'00"W
R35	S66°26'24"E
R36	S31°06'39"E
R37	S83°14'43"E
R38	N38°08'33"E

CURVE TABLE			
NO.	DELTA	RADIUS	LENGTH
C1	32°06'33"	220.00'	123.29'
C2	35°14'06"	248.00'	152.51'
C3	33°28'18"	276.00'	161.24'
C4	13°14'38"	276.00'	63.80'
C5	11°36'51"	276.00'	55.95'
C6	8°36'49"	276.00'	41.49'
C7	9°46'36"	422.00'	72.01'
C8	39°47'16"	45.00'	31.25'
C9	76°23'08"	50.00'	66.66'
C10	46°18'18"	50.00'	40.41'
C11	45°50'12"	50.00'	40.00'
C12	45°52'35"	50.00'	40.03'
C13	45°10'19"	50.00'	39.42'
C14	6°59'38"	45.00'	5.49'
C15	32°47'38"	45.00'	25.76'
C16	259°34'32"	50.00'	226.52'
C17	39°47'16"	45.00'	31.25'
C18	5°59'26"	428.00'	44.75'
C19	8°03'06"	428.00'	60.15'
C20	6°26'37"	428.00'	48.13'
C21	20°29'09"	428.00'	153.03'
C22	33°07'37"	222.00'	128.35'
C23	35°26'16"	250.00'	154.63'
C24	33°41'13"	278.00'	163.45'
C25	15°43'59"	278.00'	76.34'
C26	11°04'20"	278.00'	53.72'
C27	6°52'54"	278.00'	33.39'
C28	17°54'33"	372.00'	116.28'
C29	6°03'29"	478.00'	50.54'
C30	7°12'37"	478.00'	60.15'
C31	13°16'06"	478.00'	110.69'
C32	16°22'16"	450.00'	128.58'
C33	24°22'24"	400.00'	170.16'
C34	5°04'19"	472.00'	41.78'
C35	8°38'07"	472.00'	71.14'
C36	13°42'26"	472.00'	112.92'
C37	1°09'01"	404.00'	8.11'
C38	15°07'22"	404.00'	106.63'
C39	10°51'40"	404.00'	76.58'
C40	11°26'55"	404.00'	80.73'
C41	38°34'58"	404.00'	272.05'
C42	31°54'17"	128.00'	71.28'
C43	25°16'56"	128.00'	56.48'
C44	57°11'13"	128.00'	127.76'
C45	4°40'07"	274.50'	22.37'
C46	11°43'09"	274.50'	56.15'
C47	16°12'15"	274.50'	77.63'
C48	10°48'29"	274.50'	51.78'
C49	21°47'02"	274.50'	104.37'
C50	12°51'30"	460.00'	103.23'
C51	41°49'39"	460.00'	335.81'
C52	52°11'45"	432.00'	393.55'
C53	43°29'41"	432.00'	327.94'
C54	57°11'13"	100.00'	99.81'
C55	57°11'13"	72.00'	71.86'
C56	15°19'53"	404.00'	108.10'
C57	3°57'46"	528.00'	36.52'
C58	7°13'48"	528.00'	66.63'
C59	2°30'52"	528.00'	23.17'
C60	13°42'26"	528.00'	126.32'
C61	13°42'26"	500.00'	119.62'
C62	8°42'04"	432.00'	65.61'
C63	36°57'22"	45.00'	29.03'
C64	2°49'54"	45.00'	2.22'

LINE TABLE			
NO.	LENGTH	BEARING	RECORD DATA
L1	15.46'	S00°04'33"W	
L2	8.97'	N45°02'47"E	
L3	14.60'	N26°39'30"E	
L4	34.25'	N00°04'33"E	
L5	4.25'	N00°04'33"E	
L6	8.97'	S45°05'09"E	
L7	9.15'	N67°24'59"E	
L8	5.62'	S54°41'21"E	
L9	16.43'	S54°41'21"E	
L10	9.28'	S37°44'01"E	
L11	35.21'	N14°16'28"E	
L12	9.02'	N53°40'52"E	
L13	9.60'	S20°40'10"E	
L14	8.97'	N44°54'51"E	
L15	8.97'	S45°05'09"E	
L16	26.69'	N00°07'37"W	
L17	8.96'	N44°54'51"E	
L18	8.97'	S44°59'04"E	
L19	56.00'	N89°57'19"E	
L20	28.00'	N89°57'19"E	
L21	28.00'	N89°57'19"E	
L22	57.07'	S79°02'23"E	((S79°02'23"E 57.07'))
L23	28.53'	S79°02'23"E	
L24	28.53'	S79°02'23"E	
L25	12.24'	S45°09'07"E	((S45°09'07"E 12.24'))
L26	8.97'	N44°53'53"E	
L27	8.97'	N45°07'10"W	
L28	24.37'	N13°34'49"E	
L29	10.41'	N53°20'49"E	
L30	8.98'	S38°14'23"E	
L31	8.95'	S80°23'09"E	
L32	24.88'	S32°55'30"E	
L33	21.26'	N00°06'43"W	
L34	9.37'	N53°22'54"E	
L35	60.43'	N89°52'57"E	
L36	60.43'	N89°52'57"E	
L37	88.56'	N89°52'57"E	
L38	33.60'	N89°52'57"E	
L39	60.41'	S32°55'30"E	
L40	63.00'	N89°53'17"E	
L41	24.88'	S32°55'30"E	
L42	8.95'	N14°33'09"E	
L43	8.97'	N44°48'30"E	
L44	44.64'	S13°34'49"W	
L45	6.00'	N00°07'37"W	
L46	29.51'	N00°07'37"W	
L47	67.63'	S60°28'29"E	
L48	55.00'	S35°18'39"W	
L49	55.00'	S35°18'39"W	
L50	12.23'	S10°41'28"E	
L51	12.37'	N78°57'32"E	
L52	12.23'	S10°42'08"E	
L53	93.00'	N00°16'33"W	
L54	58.65'	N00°16'33"W	
L55	56.00'	N89°50'11"E	
L56	16.74'	S79°31'35"W	

OFFICIAL ADDRESS NUMBERS  
WHICH APPEARS ON THIS PAGE MUST BE INSTALLED  
BEFORE FINAL INSPECTION AS PER SECTION 12-1304  
F.M.C. (MINIMUM SIZE 3" HIGH WITH 1/4" STROKE)  
ISSUED BY: Paul Bernal DATE: 8/28/03

NOTES  
1. SEE SHEET 2 OF 3 FOR LEGEND AND BASIS OF BEARINGS.