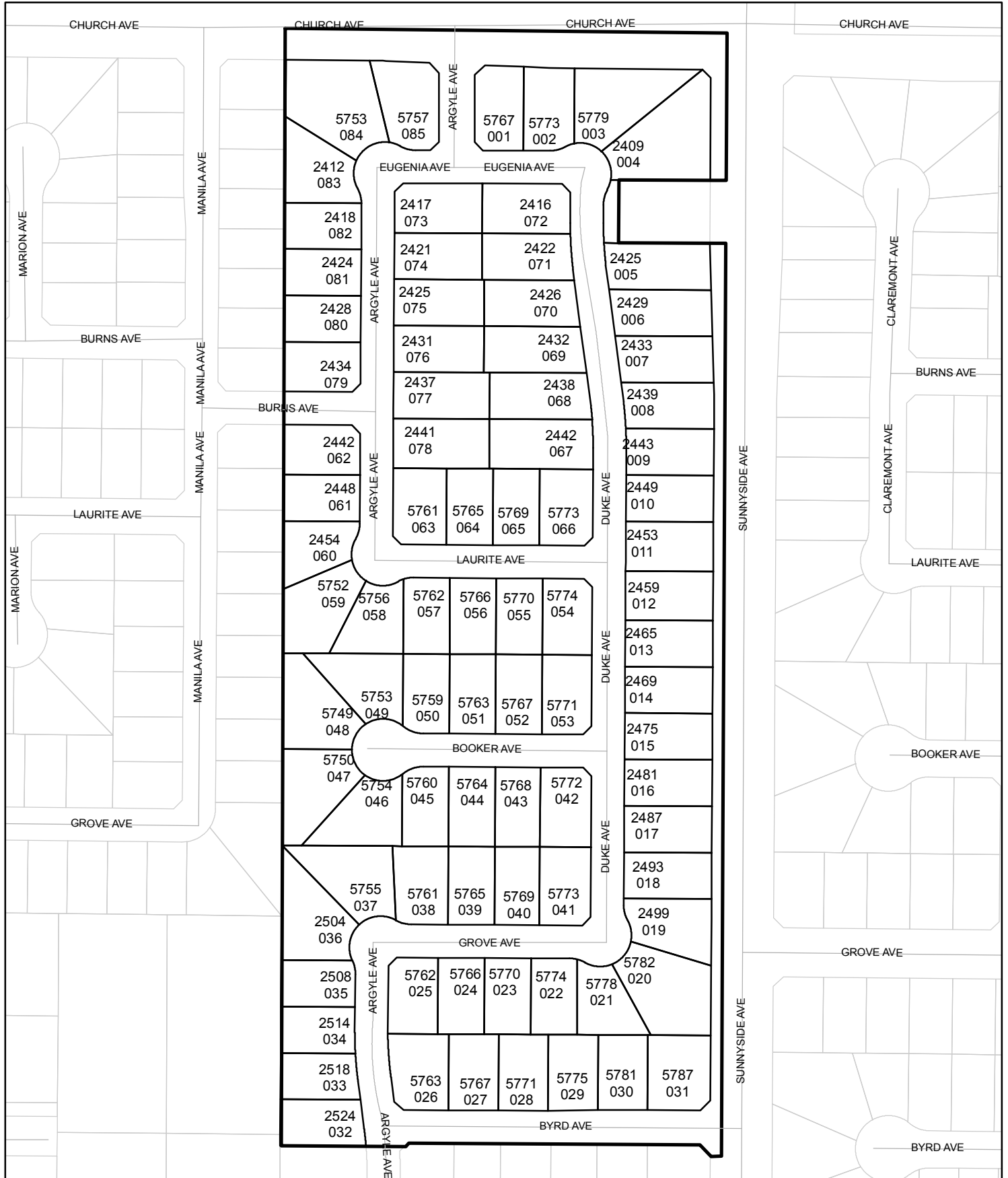




# Street Names, Addresses and (Lot Numbers) for T5109

Prepared on Thu Dec 21 21:13:55 2017



# TRACT NO. 5109

PHASE III OF TENTATIVE MAP NO. 4570

IN THE CITY OF FRESNO, COUNTY OF FRESNO, STATE OF CALIFORNIA

SURVEYED AND PLATTED IN JULY 2002, BY GARY G. GIANNETTA

SHEET TWO OF TWO SHEETS

SCALE: 1" = 100'

3/4" IRON PIPE, FLUSH WITH A.C., AS BEING THE CENTER QUARTER CORNER OF SEC. 16, T14 S. R. 21 E. M.D.B. & M.

FRESNO COUNTY BRASS CAP MONUMENT, FLUSH WITH A.C. AS BEING THE SOUTH QUARTER CORNER OF SEC. 16, T14 S. R. 21 E. M.D.B. & M. C.R. # 2893

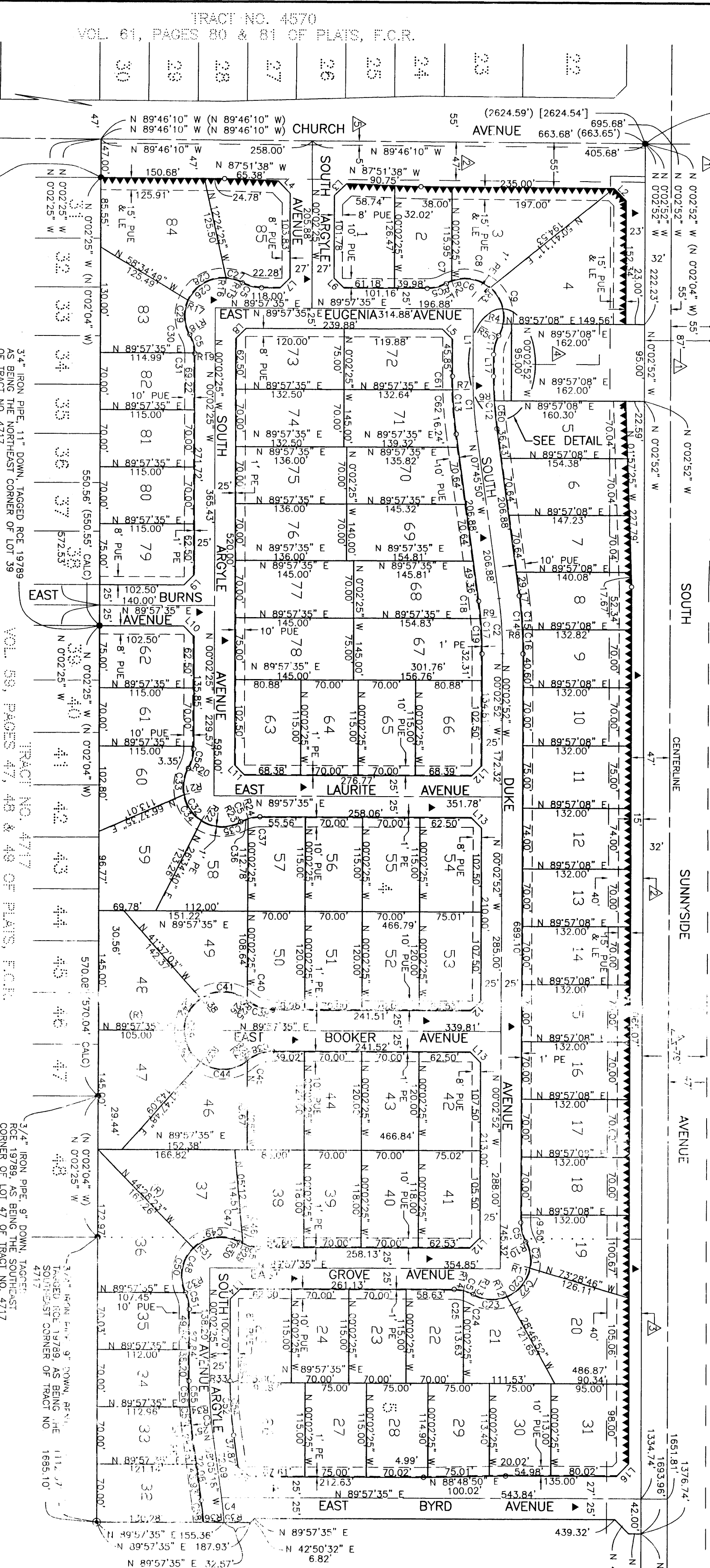
**BASIS OF BEARINGS**  
 THE NORTH LINE OF THE SOUTHWEST QUARTER OF SECTION 16, TOWNSHIP 14 SOUTH, RANGE 21 EAST, M.D.B. & M., TAKEN AS BEARING N 89°46'10" W AS PER TRACT NO. 4570, RECORDED IN VOLUME 81, PAGES 80 AND 81 OF PLATS, FRESNO COUNTY RECORDS.

**LEGEND:**

- MONUMENT FOUND AND ACCEPTED AS NOTED
- SET 3/4" IRON PIPE, 30" LONG, 6" DOWN BELOW GROUND, TAGGED R.C.E. 26996
- SET 3/4" IRON PIPE, 30" LONG, 4" UP IN 6" DIAMETER X 30" P.C.C. MONUMENT, DOWN 6" BELOW GROUND, TAGGED R.C.E. 26996
- ▲ NOW OFFERED FOR DEDICATION FOR PUBLIC STREET PURPOSES
- ▲ PREVIOUSLY DEDEDICATED FOR PUBLIC STREET PURPOSES JAN. 26, 1998, DOC. NO. 98009904, F.C.R.
- ▲ PACIFIC GAS AND ELECTRIC COMPANY EASEMENT, RECORDED APRIL 20, 1966 AS DOC. NO. 30237, F.C.R.
- ▲ PACIFIC GAS AND ELECTRIC COMPANY EASEMENT, RECORDED APRIL 20, 1966 AS DOC. NO. 30239, F.C.R.
- ▲ PREVIOUSLY DEDEDICATED TO THE CITY OF FRESNO BY GRANT DEED RECORDED JUNE 16, 1994 AS DOC. NO. 94089729, F.C.R.
- ▲ PREVIOUSLY DEDEDICATED TO THE CITY OF FRESNO FOR SEWER EASEMENT BY GRANT DEED RECORDED NOVEMBER 11, 1991 AS DOC. NO. 91111, F.C.R.
- ▲ INDICATES RELINQUISHMENT OF DIRECT ACCESS RIGHTS
- ( ) RECORD DATA AS PER TRACT NO. 4717, RECORDED IN VOL. 59, PAGES 47, 48 & 49 OF PLATS, F.C.R.
- [ ] RECORD DATA AS PER TRACT NO. 4570, RECORDED IN VOL. 81, PAGES 80 & 81 OF PLATS, F.C.R.
- F.C.P. FRESNO COUNTY RECORDS
- LE LANDSCAPE EASEMENT NOW OFFERED FOR DEDICATION FOR PUBLIC USE
- PE PEDESTRIAN EASEMENT NOW OFFERED FOR DEDICATION FOR PUBLIC USE
- PUE PUBLIC UTILITY EASEMENT NOW OFFERED FOR DEDICATION FOR PUBLIC USE
- (CALC) CALCULATED FROM RECORD DATA
- (R) DENOTES RADIAL BEARINGS

**NOTE:**  
 1. SET 3/4" IRON PIPE, 6" DOWN, TAGGED R.C.E. 26996 AT ALL LOT CORNERS

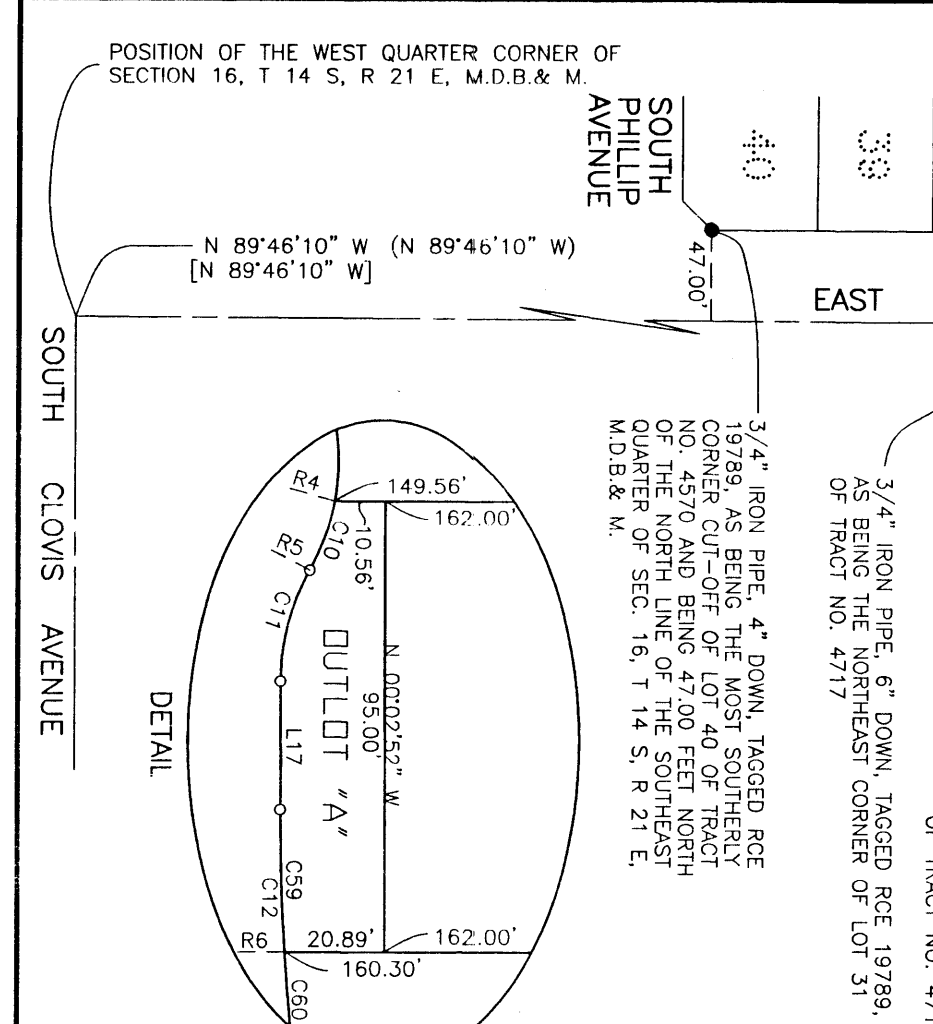
LINE	DIRECTION	DISTANCE
L1	N 00°02'52" W	52.32
L2	N 44°54'31" W	20.80
L3	N 45°07'05" E	17.68
L4	N 45°02'35" W	17.68
L5	N 45°07'35" E	17.68
L6	N 44°57'35" E	17.68
L7	N 44°57'35" E	17.68
L8	N 44°57'35" E	17.68
L9	N 44°57'35" E	17.68
L10	N 45°02'52" W	17.68
L11	N 45°02'52" W	17.68
L12	N 44°57'21" E	17.68
L13	N 45°07'35" E	17.68
L14	N 44°57'35" E	17.68
L15	N 45°03'51" E	18.87
L16	N 44°57'21" E	21.21
L17	N 00°02'52" W	27.13



RADIAL	DIRECTION
R1	N 29°09'03" W
R2	N 20°11'50" W
R3	S 79°34'45" W
R4	S 79°34'45" W
R5	S 79°34'45" W
R6	S 79°34'45" W
R7	S 79°34'45" W
R8	S 79°34'45" W
R9	S 79°34'45" W
R10	S 79°34'45" W
R11	S 79°34'45" W
R12	S 79°34'45" W
R13	S 79°34'45" W
R14	S 79°34'45" W
R15	S 79°34'45" W
R16	S 79°34'45" W
R17	S 79°34'45" W
R18	S 79°34'45" W
R19	S 79°34'45" W
R20	N 60°55'48" W
R21	S 79°34'45" W
R22	S 32°05'18" W
R23	S 29°09'03" E
R24	S 60°55'47" E
R25	N 39°44'50" E
R26	S 86°08'46" W
R27	S 39°24'52" E
R28	N 86°44'33" E
R29	S 84°47'47" E
R30	N 60°50'31" E
R31	S 79°00'24" E
R32	S 22°48'14" E
R33	N 44°28'23" E
R34	S 64°48'06" W
R35	S 89°44'39" W
R36	S 86°30'26" W
R37	S 89°23'31" E
R38	S 89°08'58" W
R39	S 35°11'43" W
R40	N 89°01'25" E

CURVE	RADIUS	LENGTH	TANGENT	DELTA
C1	500.00	4.40	33.75	0.74325°
C2	500.00	4.40	33.72	0.74298°
C3	303.00	2.95	23.82	0.62052°
C4	492.00	3.86	33.10	0.62848°
C5	492.00	3.86	33.10	0.62848°
C6	492.00	3.86	33.10	0.62848°
C7	47.00	1.41	1.62	0.81918°
C8	47.00	1.41	1.62	0.81918°
C9	47.00	1.41	1.62	0.81918°
C10	47.00	1.41	1.62	0.81918°
C11	47.00	1.41	1.62	0.81918°
C12	47.00	1.41	1.62	0.81918°
C13	525.00	7.71	35.44	0.74325°
C14	525.00	7.71	35.41	0.74298°
C15	525.00	7.71	35.41	0.74298°
C16	525.00	7.71	35.41	0.74298°
C17	525.00	7.71	35.41	0.74298°
C18	475.00	4.24	32.03	0.74298°
C19	475.00	4.24	32.03	0.74298°
C20	475.00	4.24	32.03	0.74298°
C21	47.00	1.59	1.81	0.81918°
C22	47.00	1.59	1.81	0.81918°
C23	47.00	1.59	1.81	0.81918°
C24	48.00	1.48	1.72	0.81918°
C25	48.00	1.48	1.72	0.81918°
C26	47.00	1.59	1.81	0.81918°
C27	47.00	1.59	1.81	0.81918°
C28	47.00	1.59	1.81	0.81918°
C29	47.00	1.59	1.81	0.81918°
C30	48.00	1.48	1.72	0.81918°

CURVE	RADIUS	LENGTH	TANGENT	DELTA
C31	48.00	0.78	0.39	0.06561°
C32	48.00	0.78	0.39	0.06561°
C33	47.00	1.21	1.65	1.48131°
C34	47.00	1.21	1.65	1.48131°
C35	47.00	1.21	1.65	1.48131°
C36	47.00	1.21	1.65	1.48131°
C37	47.00	1.21	1.65	1.48131°
C38	48.00	0.78	0.39	0.06561°
C39	48.00	0.78	0.39	0.06561°
C40	48.00	0.78	0.39	0.06561°
C41	47.00	1.21	1.65	1.48131°
C42	47.00	1.21	1.65	1.48131°
C43	47.00	1.21	1.65	1.48131°
C44	47.00	1.21	1.65	1.48131°
C45	47.00	1.21	1.65	1.48131°
C46	48.00	0.78	0.39	0.06561°
C47	48.00	0.78	0.39	0.06561°
C48	47.00	1.21	1.65	1.48131°
C49	47.00	1.21	1.65	1.48131°
C50	47.00	1.21	1.65	1.48131°
C51	47.00	1.21	1.65	1.48131°
C52	48.00	0.78	0.39	0.06561°
C53	47.00	1.21	1.65	1.48131°
C54	47.00	1.21	1.65	1.48131°
C55	48.00	0.78	0.39	0.06561°
C56	48.00	0.78	0.39	0.06561°
C57	48.00	0.78	0.39	0.06561°
C58	48.00	0.78	0.39	0.06561°
C59	47.00	1.21	1.65	1.48131°
C60	47.00	1.21	1.65	1.48131°
C61	505.00	3.27	17.04	4.26336°
C62	525.00	54.12	27.05	5.24223°



RECEIVED  
 NOV 7 2002  
 CITY OF FRESNO  
 BUILDING & SAFETY DEPARTMENT