



Prepared on Sat Apr 07 22:04:45 2018

Street Names, Addresses and (Lot Numbers) for T5107



MAP OF
TRACT No. 5107
 SHEET 2 OF 2 SHEETS
FIORE DEL LOTO

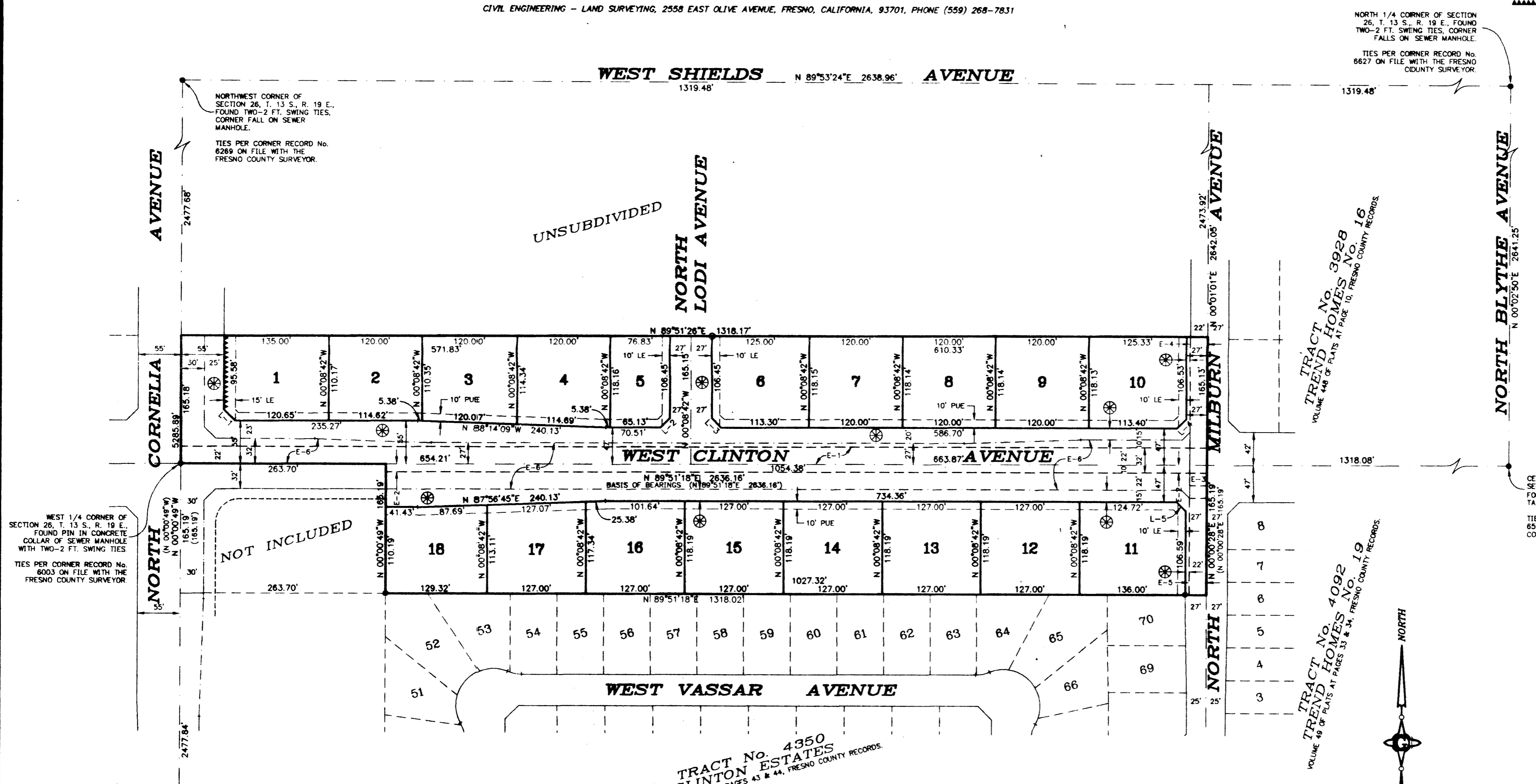
IN THE CITY OF FRESNO, COUNTY OF FRESNO, STATE OF CALIFORNIA

SURVEYED AND PLATTED BY R. W. GREENWOOD ASSOCIATES, INC.

CIVIL ENGINEERING - LAND SURVEYING, 2558 EAST OLIVE AVENUE, FRESNO, CALIFORNIA, 93701, PHONE (559) 268-7831

LEGEND

- THE BLUE BORDER INDICATES THE LIMITS OF THIS SUBDIVISION.
- MONUMENTS FOUND AND ACCEPTED, AS NOTED.
- SET 3/4" IRON PIPE, 4" UP IN 6" DIA x 30" P.C.C. MONUMENT, 6" DOWN, TAGGED LS 6945, PER CITY STD. P-36.
- LE INDICATES LANDSCAPE AND PUBLIC UTILITY EASEMENT NOW OFFERED FOR DEDICATION.
- PUE INDICATES PUBLIC UTILITY EASEMENT NOW OFFERED FOR DEDICATION.
- ⊗ INDICATES AREA NOW OFFERED FOR DEDICATION FOR PUBLIC STREET PURPOSES.
- INDICATES WAIVER OF DIRECT ACCESS RIGHTS.
- E-1 INDICATES 22 FT. EASEMENT GRANTED TO THE CITY OF FRESNO FOR SANITARY SEWER MAIN AND APPURTENANCES, RECORDED NOVEMBER 17, 1981, IN BOOK 7817, PAGE 20, O.R.F.C.
- E-2 INDICATES 10 FT. EASEMENT GRANTED TO THE CITY OF FRESNO FOR SANITARY SEWER MAIN AND APPURTENANCES, RECORDED FEBRUARY 1, 1983, AS INSTRUMENT No. 83008696, O.R.F.C.
- E-3 INDICATES 22 FT. x 26 FT. EASEMENT GRANTED TO THE CITY OF FRESNO FOR PUBLIC STREET PURPOSES, RECORDED JANUARY 4, 1988, AS INSTRUMENT No. 88000099, O.R.F.C.
- E-4 INDICATES 22 FT. EASEMENT GRANTED TO THE CITY OF FRESNO FOR PUBLIC STREET PURPOSES, RECORDED JANUARY 4, 1988, AS INSTRUMENT No. 88000100, O.R.F.C.
- E-5 INDICATES 22 FT. EASEMENT GRANTED TO THE CITY OF FRESNO FOR PUBLIC STREET PURPOSES, RECORDED AUGUST 17, 1989, AS INSTRUMENT No. 89087827, O.R.F.C.
- E-6 INDICATES EASEMENT GRANTED TO THE CITY OF FRESNO FOR PUBLIC STREET PURPOSES, RECORDED NOVEMBER 15, 1993, AS INSTRUMENT No. 93176126, O.R.F.C.
- L-1 SEE LINE TABLE
- () INDICATES RECORD DATA PER TRACT No. 4350, CLINTON ESTATES RECORDED IN VOLUME 56 OF PLATS AT PAGES 43 & 44, F.C.R.



NORTHWEST CORNER OF SECTION 26, T. 13 S., R. 19 E., FOUND TWO-2 FT. SWING TIES, CORNER FALL ON SEWER MANHOLE.
 TIES PER CORNER RECORD No. 6269 ON FILE WITH THE FRESNO COUNTY SURVEYOR.

WEST 1/4 CORNER OF SECTION 26, T. 13 S., R. 19 E., FOUND PIN IN CONCRETE COLLAR OF SEWER MANHOLE WITH TWO-2 FT. SWING TIES
 TIES PER CORNER RECORD No. 6003 ON FILE WITH THE FRESNO COUNTY SURVEYOR

NORTH CORNER OF SECTION 26, T. 13 S., R. 19 E., FOUND 3/4" IRON PIPE, FLUSH, TAGGED RCE 26,996.
 TIES PER CORNER RECORD No. 6568 ON FILE WITH THE FRESNO COUNTY SURVEYOR.

SOUTHWEST CORNER OF SECTION 26, T. 13 S., R. 19 E., FOUND 2" BRASS CAP MONUMENT, STAMPED RCE 26,626, FLUSH.
 TIES PER CORNER RECORD No. 6287 ON FILE WITH THE FRESNO COUNTY SURVEYOR.

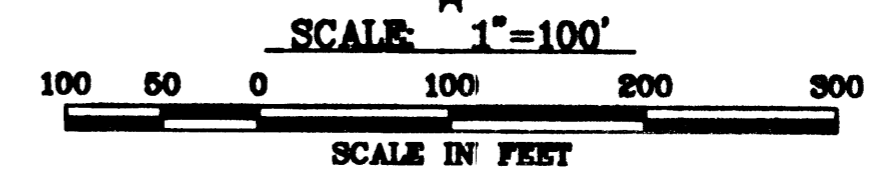
LINE TABLE

LINE	Bearing	Dist.
L-1	N 43°04'46" W	20.62'
L-2	N 44°51'18" E	16.55'
L-3	N 45°08'42" W	18.54'
L-4	N 44°56'09" E	16.43'
L-5	N 45°04'07" W	16.38'

TRACT No. 4350
 CLINTON ESTATES
 VOLUME 56 OF PLATS AT PAGES 43 & 44, FRESNO COUNTY RECORDS.

BASIS OF BEARINGS

THE NORTH LINE OF THE SOUTHWEST 1/4 OF SECTION 26, T. 13 S., R. 19 E., WAS TAKEN TO BEAR NORTH 89°51'18" EAST AS SHOWN ON THE MAP OF TRACT No. 4350, CLINTON ESTATES, RECORDED IN VOLUME 56 OF PLATS AT PAGES 43 AND 44, FRESNO COUNTY RECORDS.



NORTH 1/4 CORNER OF SECTION 26, T. 13 S., R. 19 E., FOUND TWO-2 FT. SWING TIES, CORNER FALLS ON SEWER MANHOLE.
 TIES PER CORNER RECORD No. 6627 ON FILE WITH THE FRESNO COUNTY SURVEYOR.

TRACT No. 3928
 TREND HOMES No. 16
 VOLUME 48 OF PLATS AT PAGE 10, FRESNO COUNTY RECORDS

TRACT No. 4092
 TREND HOMES No. 19
 VOLUME 48 OF PLATS AT PAGES 33 & 34, FRESNO COUNTY RECORDS